

Town of Shutesbury Open Space Plan

Map 4C Soils Grouped by Limitations for Septic Systems

SHUTESBURY, MASSACHUSETTS




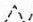

Soils Grouped by Limitations for Septic Tank Systems

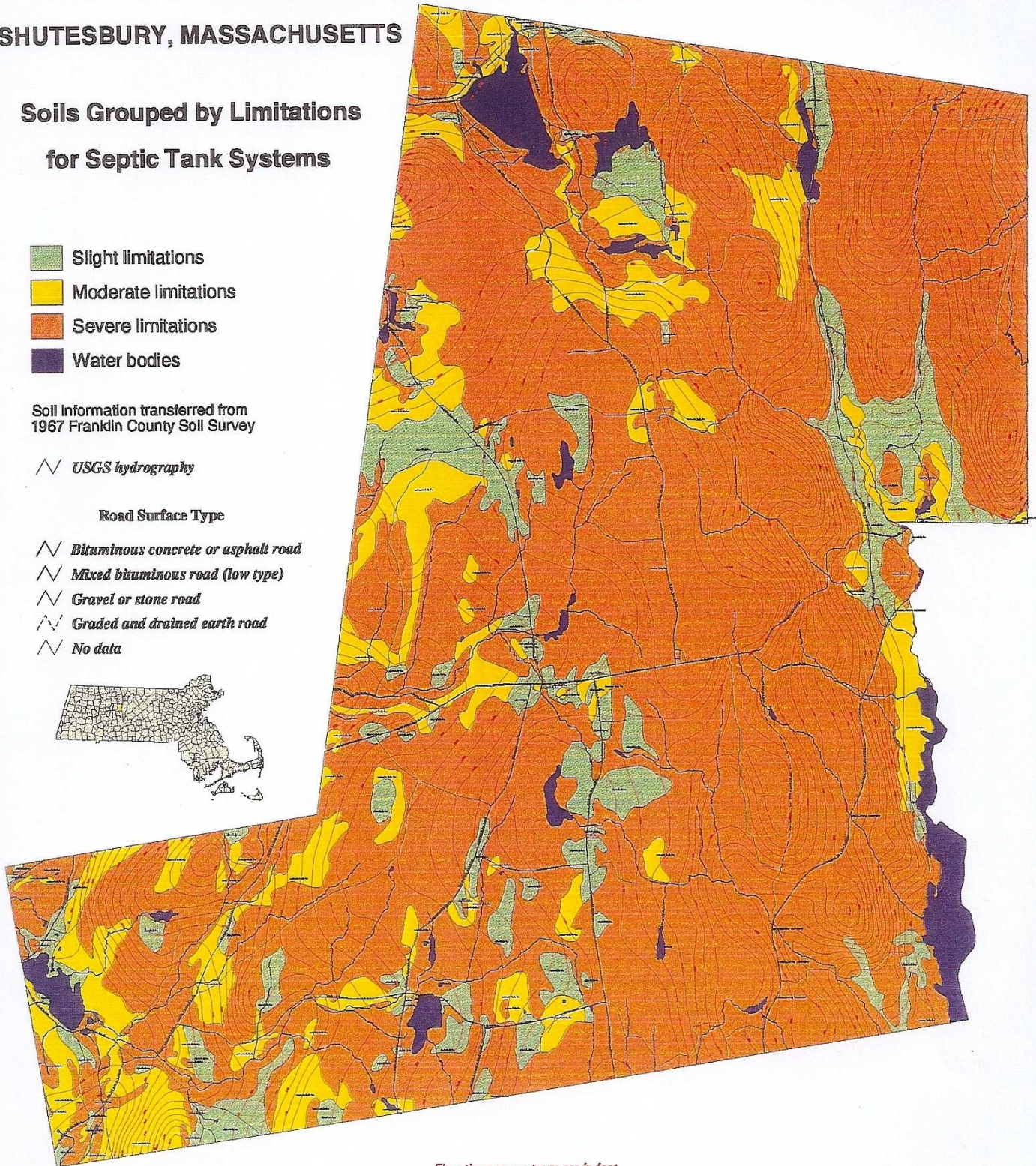
-  Slight limitations
-  Moderate limitations
-  Severe limitations
-  Water bodies

Soil information transferred from
1967 Franklin County Soil Survey

 USGS hydrography

Road Surface Type

-  Bituminous concrete or asphalt road
-  Mixed bituminous road (low type)
-  Gravel or stone road
-  Graded and drained earth road
-  No data



Elevations on contours are in feet

Source: Shutesbury Open Space and Recreation Plan 2000-2005; derived from the 1967 USDA SCS publication titled *Soil Survey, Franklin County, Massachusetts*. The 1967 Soil Survey for Franklin County has not been updated (as of early 2012) and soils information for the 1967 Soil Survey is unavailable in digital format. Soil groupings by relative limitations for septic system construction also provide valuable information on relative limitations for house construction and agricultural use and suitability for maintenance as forested or open space areas.