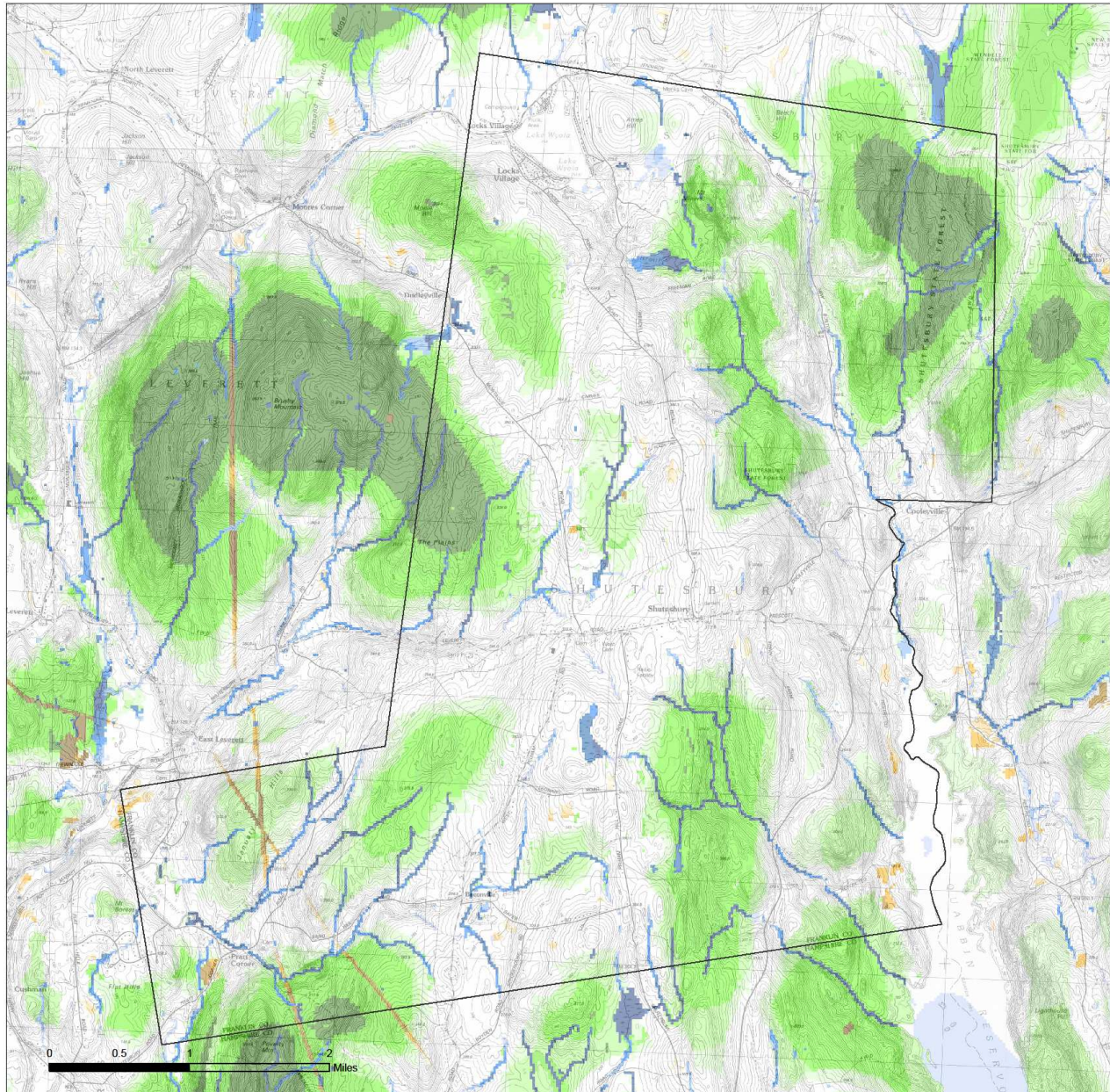


Town of Shutesbury Open Space Plan

Map F4 Habitat of Potential Regional or Statewide Importance



Updated June 2008

IEI, Index of Ecological Integrity
Top 50% of the Landscape

	Forests
	Non-forested Uplands*
	Wetlands & Aquatic

50-60 60-70 70-80 80-90 90-100% IEI

The IEI, or Index of Ecological Integrity, delineates the relative wildlife habitat and biodiversity value of any point on the landscape based on landscape ecology principles and expert opinion. The IEI is calculated by the Conservation Assessment and Prioritization System (CAPS) computer program developed at the University of Massachusetts, Amherst. Depicted on this map are those areas representing 50% of the landscape with the highest IEI values. The darker the color the higher the integrity value. For more information see <http://www.masscaps.org>.

*Non-forested uplands include grasslands, shrublands, cliffs, and exposed or wooded steep slopes.

These maps are funded in part by the Massachusetts Executive Office of Energy and Environmental Affairs, The Highland Communities Initiative of the Trustees of Reservations, the Massachusetts Department of Environmental Protection and the U.S. Environmental Protection Agency under section 104 (b) (3) of the U.S. Clean Water Act. Data sources include the Office of Geographic and Environmental Information (MassGIS).

Areas in Shutesbury with highest levels of biodiversity and habitat value are represented by darkest shades of green, blue and brown. Source: UMass, Amherst Conservation Assessment and Prioritization System (CAPS) Program.

<http://www.umass.edu/landeco/research/caps/data/dep/dep.html>