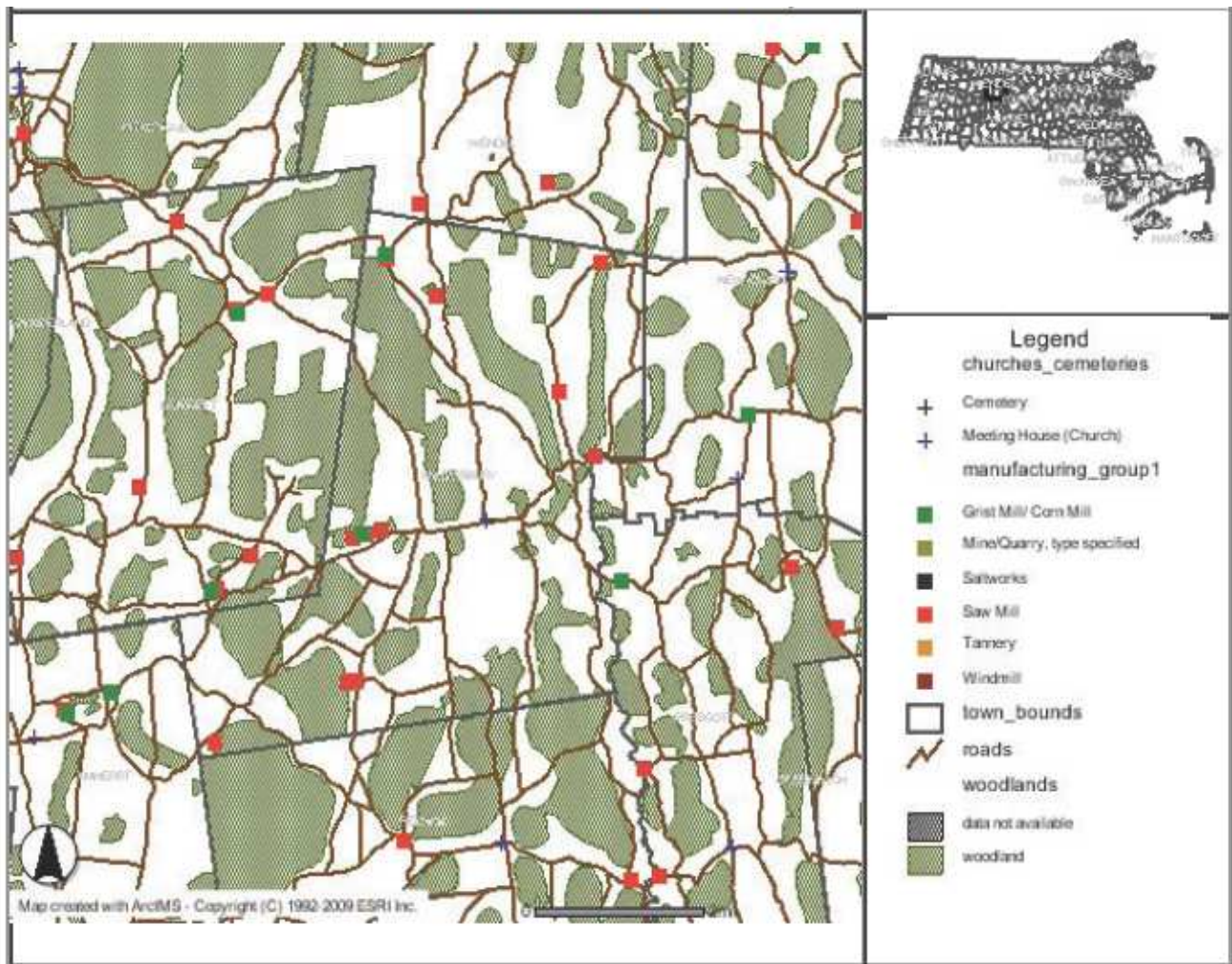


# Town of Shutesbury Open Space Plan

# Map A2 1830 Forests and Mills Map



Map of Shutesbury in 1830, showing approximate extents of forested areas and areas cleared for agriculture, as well as saw mill and grist mill sites.

Source: Harvard Forest web site at: (<http://harvardforest.fas.harvard.edu/research/1830readme.html>). Viewed and printed online using ESRI's ArcIMS software. Citations for Harvard Forest Map Project include the following: 1) Harvard Forest. 2002. 1830 Map Project. Harvard Forest Archives, Petersham, MA.; and, 2) Hall, B., G. Motzkin, D.R. Foster, M. Syfert and J. Burk. 2002. Three hundred years of forest and land-use change in Massachusetts, USA. *Journal of Biogeography* 129:1319-1135.