

Shutesbury Broadband Committee 11212017

Our team:

Asha, Gayle, Steve, Eric, Ayres, Craig, Graeme, Kent
Becky
Jim Hemmingway

Attendees:

- Tim Haas, Holyoke Gas and Electric
- Tim Crowley, Holyoke Gas and Electric
- Margy McGinness, Leverett
- Tom Powers, Leverett MLP

From WGE:

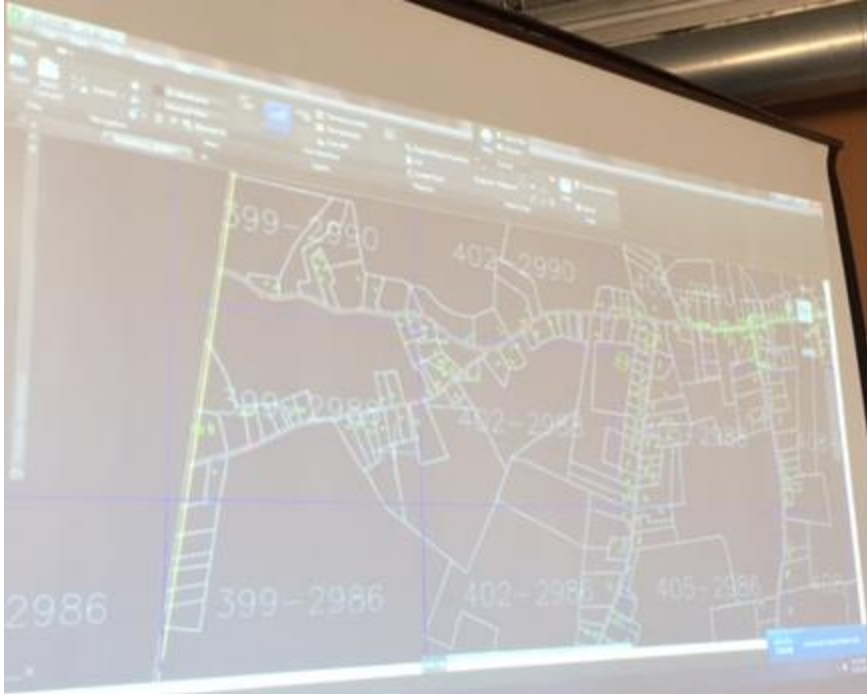
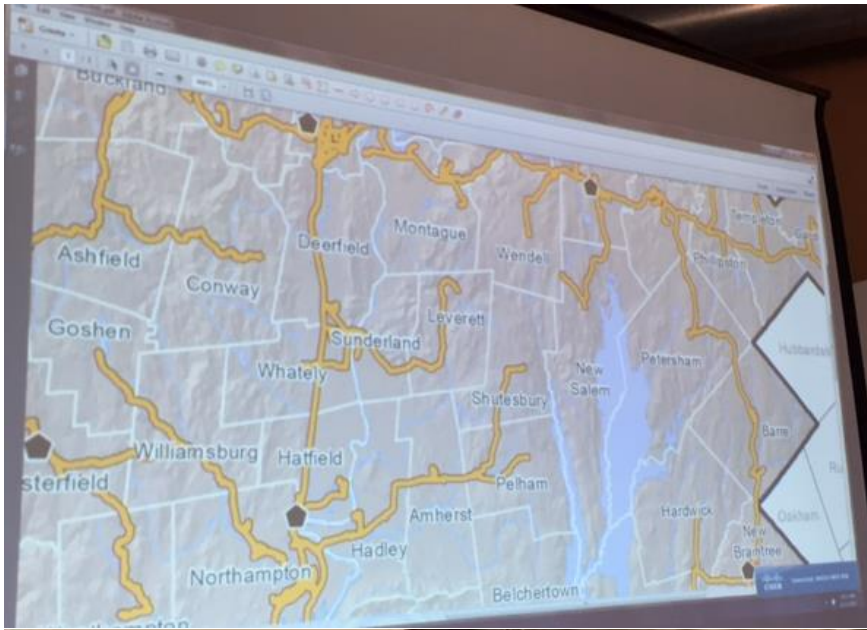
- Joe Parda, Project Engineer
- Rich Carnell, IT Architect
- Caitrin Ferriter, Key Accounts/Sales
- Nick Sarnelli (Precision Valley Design)

Agenda

- Introductions
- Edge Issues with Leverett
- Go through FTTH Questionnaire
- Ride around to review any other edge issues if necessary

WG & E

- Discussion of edge town territories (Tom)
 - Looking for ring protection; fed from the South and it dead ends; would like an alternative route
 - Had an Axia switch failure in Noho that took everything down; ideally we would like a route that is physically separate and organizationally separate- whole MBI situation is now tied up in federal and bankruptcy court and arbitration; don't expect resolution anytime soon so want something separate
 - Concept is that we'd do a reciprocal arrangement – similar to how we do fire fighting etc; jump over to neighboring town link so that we can generally back each other up. Could be as simple as the agreement we use for fire.
 - Need fiber to the right place on the boarder; identify the right link out
- Territories (Tim)
 - Lighttower; two pops- MBI fiber serves no purpose; connection between them is 10G x2
 - If we go up North Leverett Rd- want to wire between and go between the two facilities
 - Talked to Lighttower about 4 years ago; in a national grid substation/ political issues/ substation properties= more regs
 - Wendell served in from the North and then East to Boston- doesn't come down I-91
 - Leverett put in spares- can bolt in a few different places
- Looking at connection points (Joe)
 - Looking to bring in additional fibers
 - 30% digitized; not all complete but would be able to hand fibers over lines to make it solid all the way through
 - Bids from Verizon were so high that it doubled cost
- Past research on Lighttower
 - Gayle to get more information and set up conversation with them
 - Tim: Cheaper to do Ethernet ring protection
 - One strand of glass \$24/ mile- relatively inexpensive
 - Leverett running 2 fibers 10G links for subscribers



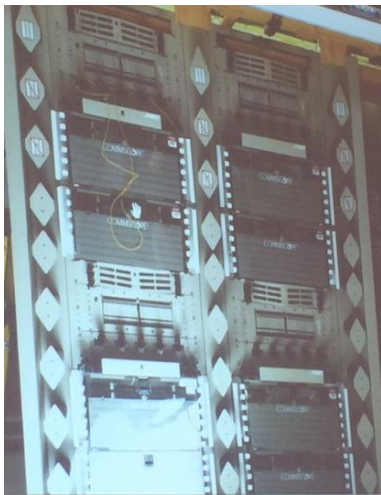
Application Review

Hut

- Fiber frame
- 9x16, 10x12, 21x28 huts- working with United Concrete Products
- Purchased huts in Westfield- went through procurement- consider mass order with other towns
- Pre-manufactured cinderblock with pre-wired panel; HVAC
- Dropped onto site – work done in advance; concrete platform (not poured)
- Town needs to do building permit etc.



Comscope, 288 fiber panel
Built up but left room for spare fiber; splitter chase with spacer plates
Parking lot- port efficiency. 256 homes served- splitter tails available to other residents.



Commscope- position panel
Huts from United Concrete
WG&E can send out a guy do to an assessment and do some pricing for us (free)- Dave Smith
WG&E can facilitate bigger buys and drive down the cost. However, daily rate for crane and can only do 2/ day so not a huge savings there.



Detailed service work not included in the initial design; if they can see the conduit then they will note it but can't guarantee that 100% info will be there.

Need map and cost for the two houses in Pelham who want to be included in our build: 135 and 133 Shutesbury Rd/ Pelham Hill Rd

Next steps:

- Joe to send hut and panel specs to Gayle
- Connect with Dave Smith to do a pricing estimate with us
- Discuss special edges with Wendell and New Salem (need make ready estimate and design options)- 202 overlap- where do we touch and who licenses and maintains poles on 202
- Figure out how to handle the use of Amherst land- public right of way of Shutesbury in Amherst- Joe to look into this- ideally it's an IRU but not sure
- Nick/ Precision will do build/design costs to where overlap with Leverett on Sand Hill
- Gayle to contact Tom about Lighttower conversation and plan to approach them to get pricing
- Gayle to send dashboard information to the committee
- Joe to get per foot trenching cost