



---

# ***ABBREVIATED NOTICE OF RESOURCE AREA DELINEATION***

---

*Filing Under the Massachusetts Wetlands Protection Act  
M.G.L. Chapter 131, Section 40 and the Town of Shutesbury Wetland Bylaw*

## **Pratt Corner Road (Parcel ID ZG-2) Shutesbury, Massachusetts**

*Submitted to:*

**Shutesbury Conservation Commission**  
Shutesbury Town Hall  
1 Cooleyville Road  
Shutesbury, Massachusetts 01072

*Filed by:*

**W.D. Cows, Inc.**  
P.O. Box 9677  
North Amherst, Massachusetts 01059

*Prepared by:*

**TRC Companies**  
650 Suffolk Street  
Lowell, Massachusetts 01854

**October 2020**

October 28, 2020

Town of Shutesbury Conservation Commission  
Shutesbury Town Hall  
1 Cooleyville Road  
Shutesbury, MA 01072

**RE: Pratt Corner Road (Parcel ID ZG-2)  
Abbreviated Notice of Resource Area Delineation (ANRAD)  
Updated Plans & Other Requested Items**

Dear Commissioners:

On behalf of W.D. Cowls, Inc., TRC Companies (TRC) is pleased to submit updated wetland resource delineation plans and other materials related to the ANRAD for an approximately 47-acre portion of the parcel off Pratt Corner Road listed by the Shutesbury tax assessor as Parcel ID ZG-2 in Shutesbury, MA (Site). The attached materials are based on the following meetings, site visits, documents, and emails:

- Shutesbury Conservation Commission (SCC) meeting – January 9, 2020;
- Site visits with Stockman Associates on April 17 and May 6, 2020;
- Stockman Associates Peer Review Comments dated April 22 and June 25, 2020; and
- SCC email dated July 25, 2020.

The following items are attached:

1. Attachment A – Figure 1: Delineated Resources Map (October 2020)
2. Attachment B – Figure 2: Delineated Resources Map Changes (October 2020)
3. Attachment C – Updated WPA Form 4A Page 1

Attachment A shows the delineated wetland resources at the Site based on the site visits with Stockman Associates. Per the SCC's request, resources have been color-coded based on state and local jurisdictional status. Other minor edits have been made based on the peer review comments. The new wetland (W-GR-2) in the center of the Site has an area of 11,553, square feet. Per TRC's calculations, this wetland would need to have between 11 and 12 inches of standing water throughout the wetland to meet the minimum volume requirement of 0.25 acre-feet to qualify as Isolated Land Subject to Flooding (ILSF) under 310 CMR 10.57(2)(b)(1). While a limited amount of flooding at one end of this wetland was observed during the April 17, 2020 visit to the Site, no indicators of more extensive flooding were observed and it is, therefore, TRC's opinion that this wetland does not qualify as ILSF and is not MassDEP jurisdictional. Therefore, this wetland is shown on the plans as only Shutesbury Bylaw jurisdictional. Other resources presented are jurisdictional under both MassDEP and the Shutesbury Bylaw.

Attachment B shows the differences between the original delineation flag locations and the updated plans.

Attachment C includes the updated contact information for W.D. Cowls as requested by the SCC.

We very much appreciate your review of this information and trust this letter and the attached documents meet the needs of the SCC to issue an Order of Resource Area Delineation. If you should have any questions, please do not hesitate to contact Maria Firstenberg at 978-735-3425 or via email at [MFirstenberg@trccompanies.com](mailto:MFirstenberg@trccompanies.com) or Jeff Brandt at 978-656-3662 or via email at [JBrandt@TRCcompanies.com](mailto:JBrandt@TRCcompanies.com).

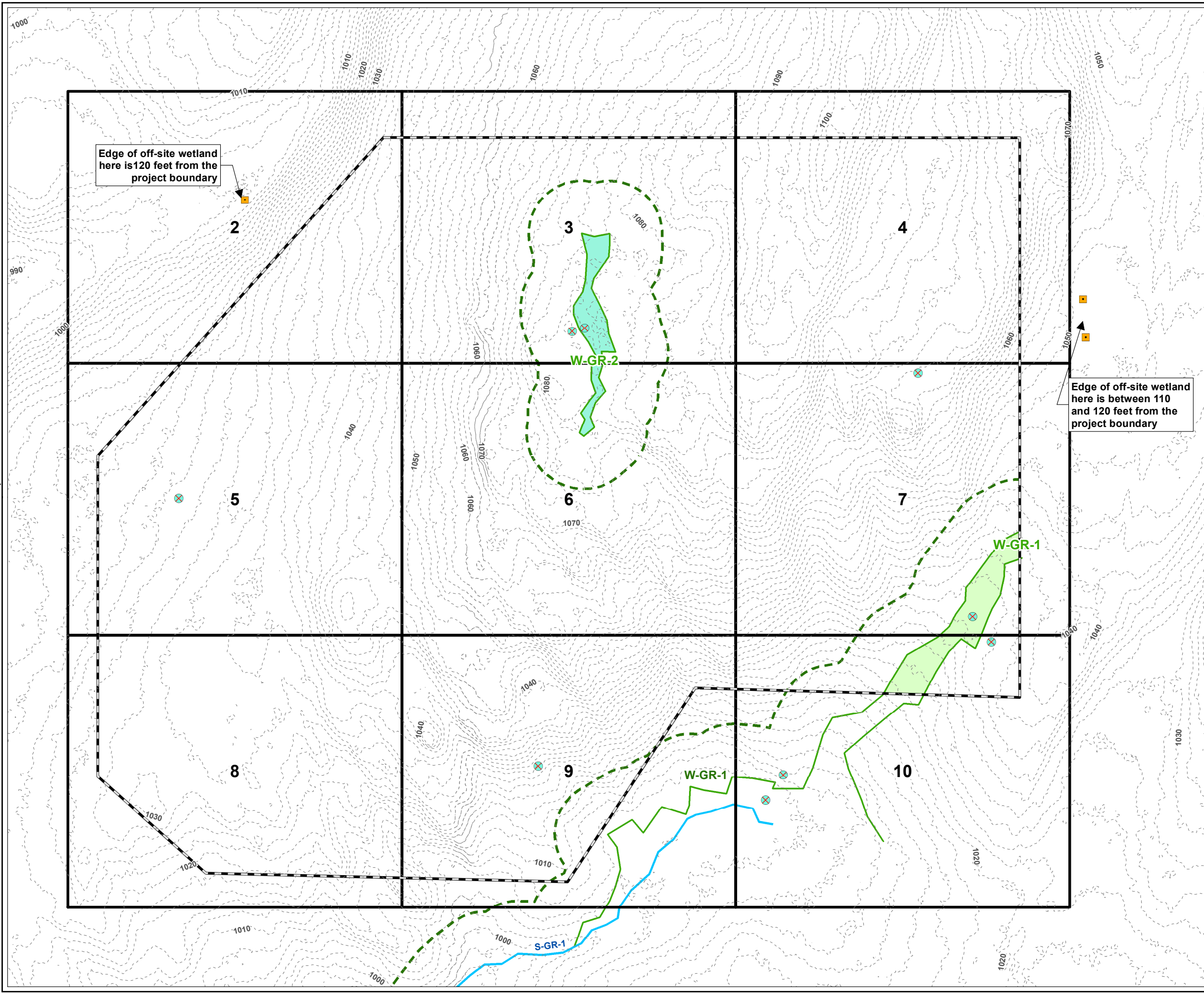
Sincerely,

TRC Companies



Jeff Brandt  
Senior Project Manager

**ATTACHMENT A**  
**Figure 1: Delineated Resources Map**  
**(October 2020)**

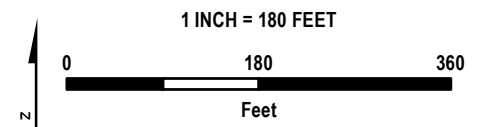


**LEGEND**

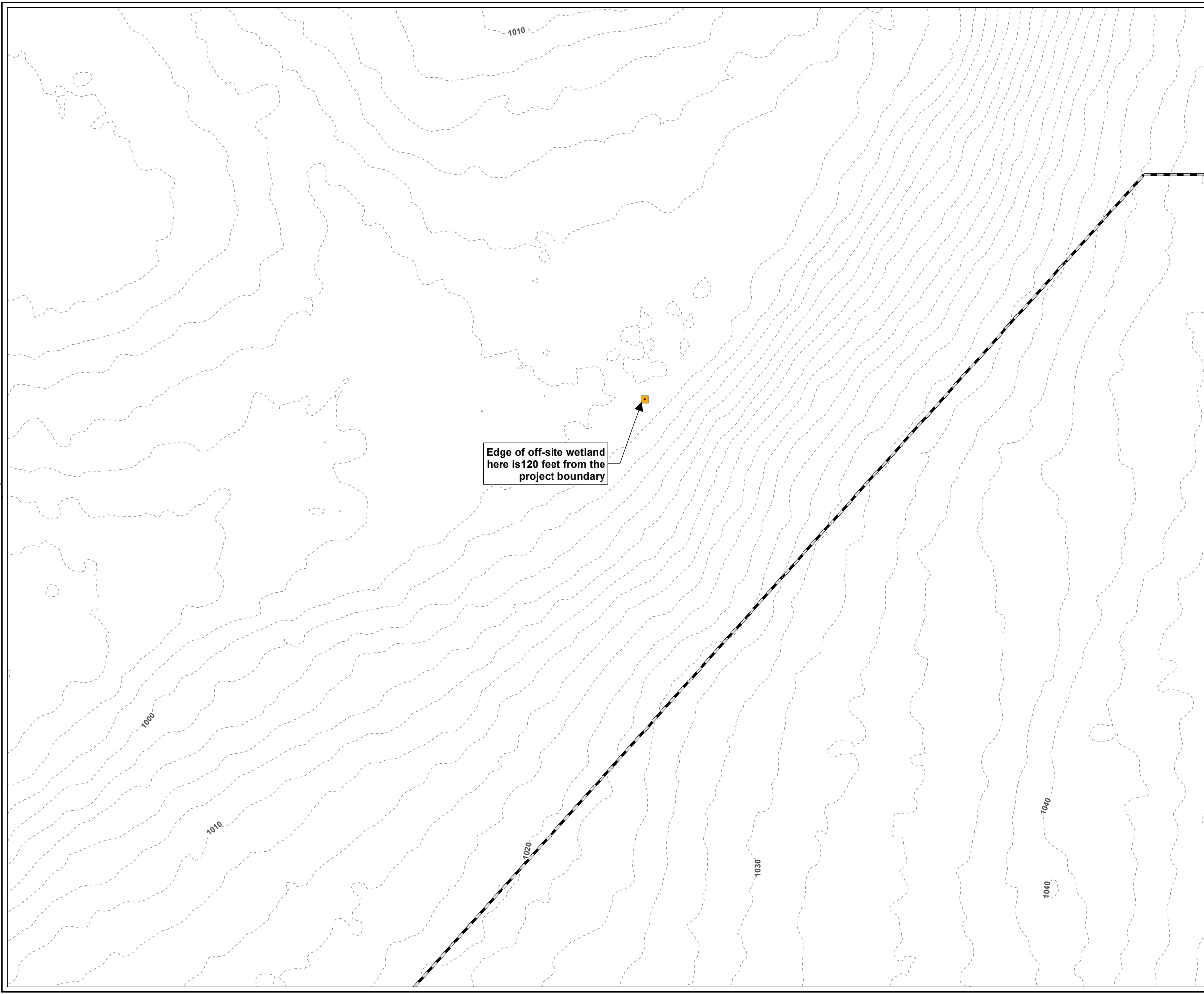
- PROJECT BOUNDARY
- 1:50' MAP SHEET
- FIELD OBSERVATION
- USACE PLOT
- DELINEATED INTERMITTENT STREAM INLAND BANK
- DELINEATED WETLAND BOUNDARY LINE
- MASSDEP/SHUTESBURY BYLAW JURISDICTIONAL WETLAND
- SHUTESBURY BYLAW JURISDICTIONAL WETLAND
- 100-FT WETLAND BUFFER
- 2-FT CONTOUR

- NOTES**
1. PLAN REVISED ON 10/16/2020.
  2. PARCEL BOUNDARIES ARE ACCESSED FROM MASSGIS SHUTESBURY LEVEL3 PARCEL DATABASE, 2018.
  3. WETLAND AND STREAM FLAGS ARE DELINEATED BY TRC WETLAND SCIENTISTS ON OCTOBER 23, 2019 AND ON APRIL 17 AND MAY 6, 2020. FLAGS SURVEYED VIA GEODE WITH SUBMETER ACCURACY. DATA IS COLLECTED IN WGS 1984 HORIZONTAL DATUM. STREAM AND WETLAND BOUNDARIES ARE GENERATED BY TRC ON DESKTOP UTILIZING DELINEATED FLAGS.
  4. 100-FT BUFFER ZONE IS GENERATED BY TRC FROM DELINEATED WETLAND RESOURCE AREAS.
  5. CONTOURS GENERATED FROM 1-METER USGS NED, 2015 (NORTH AMERICAN VERTICAL DATUM OF 1988), MASSGIS.



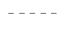
**PLANS NOT FOR CONSTRUCTION**



PROJECT:		<b>PRATT CORNER ROAD EAST PROJECT FRANKLIN COUNTY, MASSACHUSETTS</b>	
TITLE:		<b>DELINEATED RESOURCES MAP</b>	
DRAWN BY:	S. MOTURI	PROJ NO.:	336892
CHECKED BY:	M. LENNON	<b>FIGURE 1</b> SHEET 1 of 10	
APPROVED BY:	M. FIRSTENBERG		
DATE:	OCTOBER 2020		



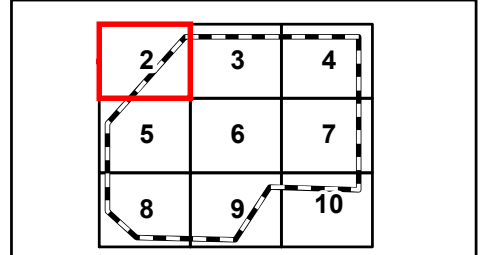
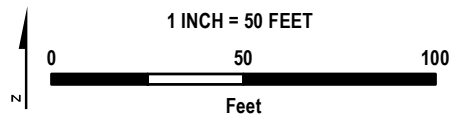
**LEGEND**

-  PROJECT BOUNDARY
-  FIELD OBSERVATION
-  2-FT CONTOUR

**NOTES**

1. PLAN REVISED ON 10/16/2020.
2. PARCEL BOUNDARIES ARE ACCESSED FROM MASSGIS SHUTESBURY LEVEL3 PARCEL DATABASE, 2018.
3. WETLAND AND STREAM FLAGS ARE DELINEATED BY TRC WETLAND SCIENTISTS ON OCTOBER 23, 2019 AND ON APRIL 17 AND MAY 6, 2020. FLAGS SURVEYED VIA GEODE WITH SUBMETER ACCURACY. DATA IS COLLECTED IN WGS 1984 HORIZONTAL DATUM. STREAM AND WETLAND BOUNDARIES ARE GENERATED BY TRC ON DESKTOP UTILIZING DELINEATED FLAGS.
4. 100-FT BUFFER ZONE IS GENERATED BY TRC FROM DELINEATED WETLAND RESOURCE AREAS.
5. CONTOURS GENERATED FROM 1-METER USGS NED, 2015 (NORTH AMERICAN VERTICAL DATUM OF 1988), MASSGIS.

**PLANS NOT FOR CONSTRUCTION**

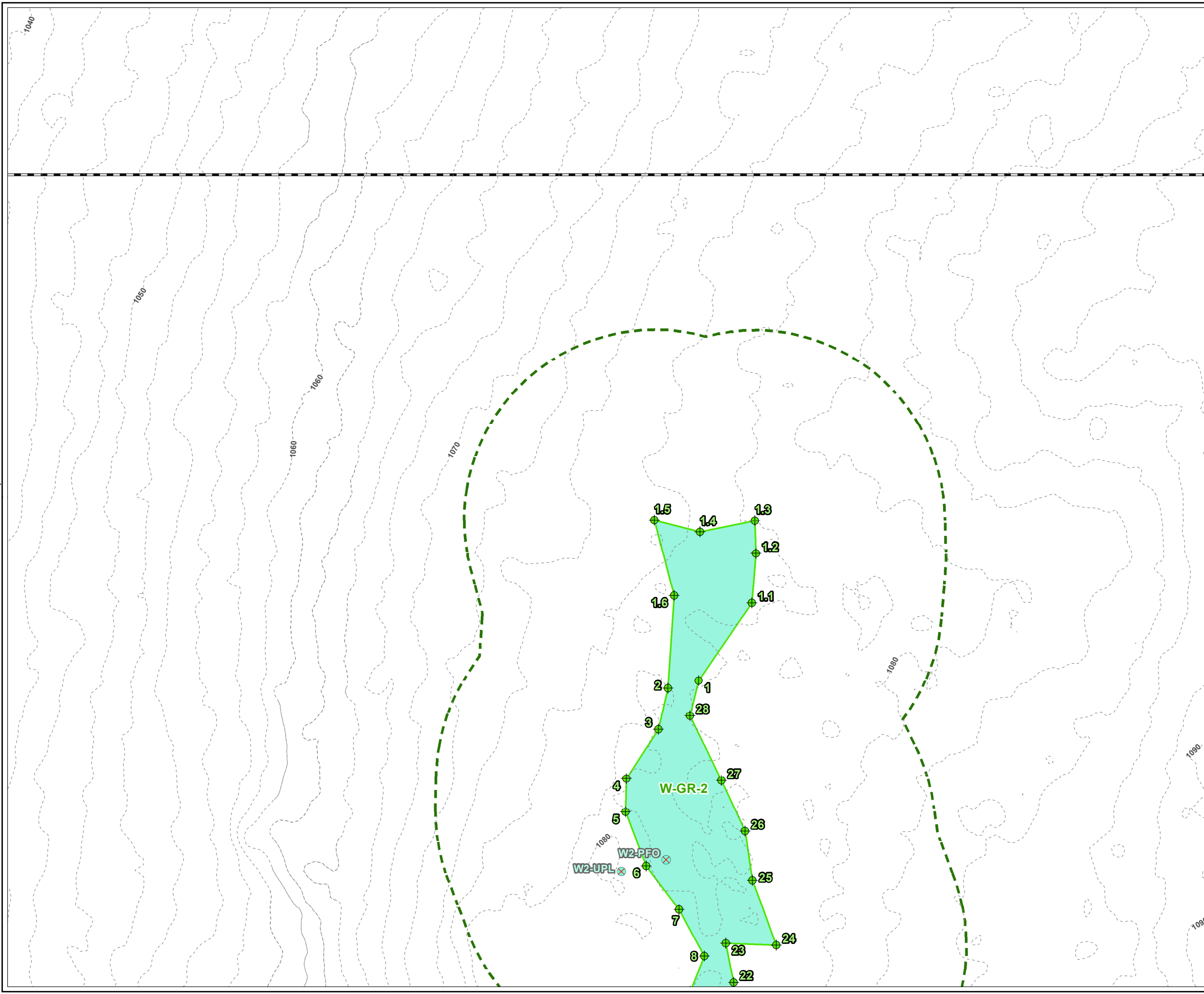


PROJECT:		<b>PRATT CORNER ROAD EAST PROJECT FRANKLIN COUNTY, MASSACHUSETTS</b>	
TITLE:		<b>DELINEATED RESOURCES MAP</b>	
DRAWN BY:	S. MOTURI	PROJ NO.:	336892
CHECKED BY:	M. LENNON	<b>FIGURE 1</b> Page 2 of 10	
APPROVED BY:	M. FIRSTENBERG		
DATE:	OCTOBER 2020		



650 SUFFOLK STREET  
LOWELL, MA 01854

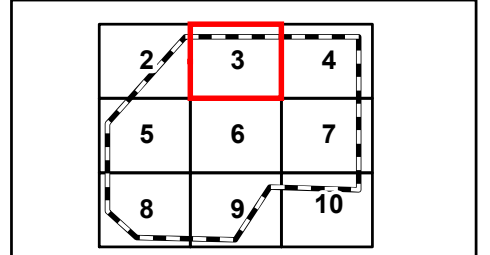
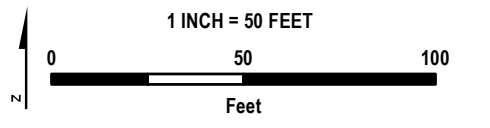
Plot Date: 10/28/2020, 11:55:19 AM by SMOTURI -- LAYOUT: ANSIB(11x17)  
 Path: S:\1-PROJECTS\AMP\336892\_0000\_0005\_Prat\_East\Prat\_East\_ANRAD\_Series\_11x17\_20201028.mxd  
 Coordinate System: NAD 1983 StatePlane Massachusetts Mainland FIPS 2001 Feet (Foot US)  
 Map Rotation: 0  
 TRC - GIS



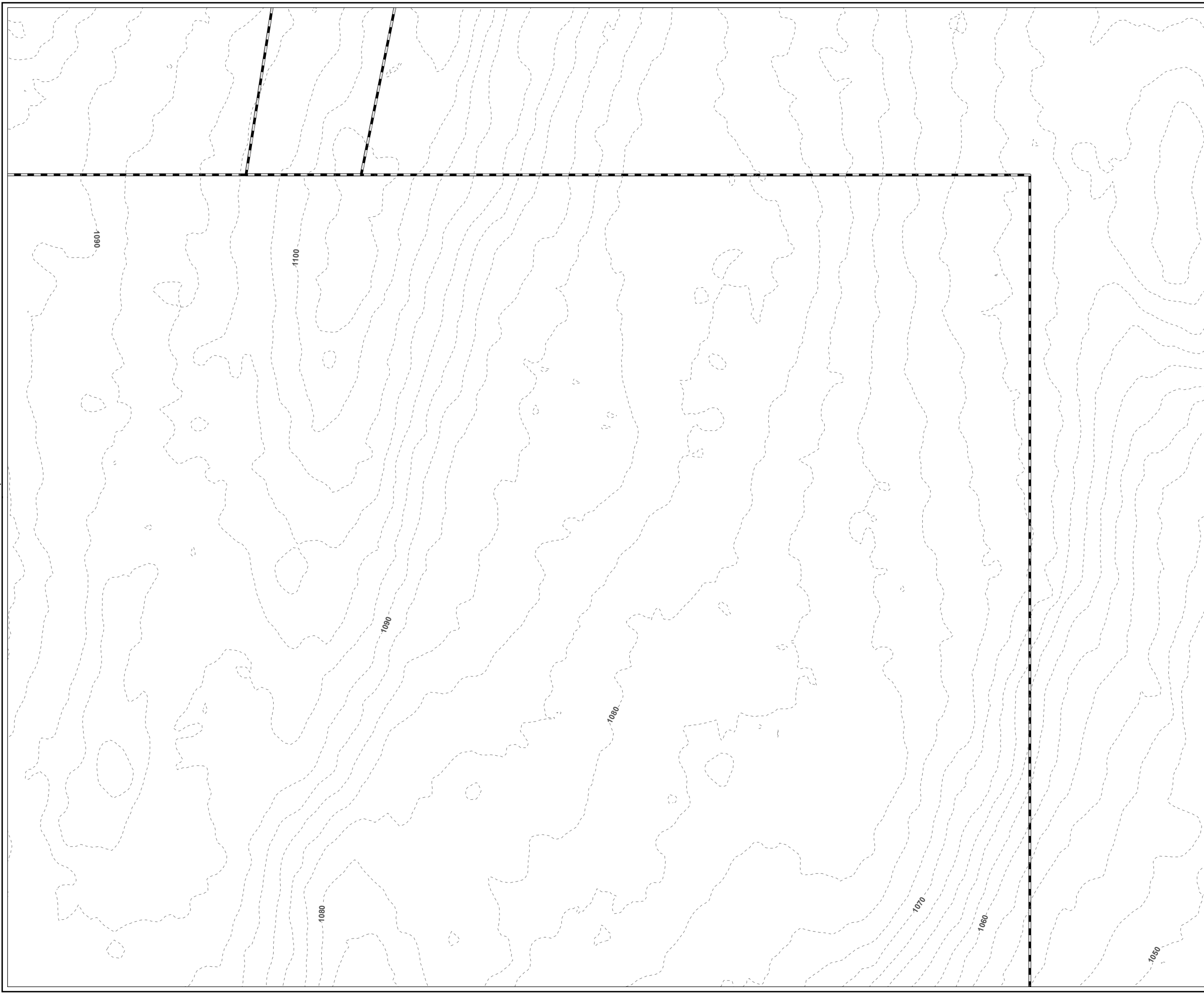
- LEGEND**
- PROJECT
  - WETLAND
  - USACE PLOT
  - SHUTESBURY BYLAW JURISDICTIONAL WETLAND
  - DELINEATED WETLAND BOUNDARY
  - 100-FT WETLAND
  - 2-FT CONTOUR

- NOTES**
1. PLAN REVISED ON 10/16/2020.
  2. PARCEL BOUNDARIES ARE ACCESSED FROM MASSGIS SHUTESBURY LEVEL3 PARCEL DATABASE, 2018.
  3. WETLAND AND STREAM FLAGS ARE DELINEATED BY TRC WETLAND SCIENTISTS ON OCTOBER 23, 2019 AND ON APRIL 17 AND MAY 6, 2020. FLAGS SURVEYED VIA GEODE WITH SUBMETER ACCURACY. DATA IS COLLECTED IN WGS 1984 HORIZONTAL DATUM. STREAM AND WETLAND BOUNDARIES ARE GENERATED BY TRC ON DESKTOP UTILIZING DELINEATED FLAGS.
  4. 100-FT BUFFER ZONE IS GENERATED BY TRC FROM DELINEATED WETLAND RESOURCE AREAS.
  5. CONTOURS GENERATED FROM 1-METER USGS NED, 2015 (NORTH AMERICAN VERTICAL DATUM OF 1988), MASSGIS.


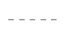
**PLANS NOT FOR CONSTRUCTION**



PROJECT:		<b>PRATT CORNER ROAD EAST PROJECT FRANKLIN COUNTY, MASSACHUSETTS</b>	
TITLE:		<b>DELINEATED RESOURCES MAP</b>	
DRAWN BY:	S. MOTURI	PROJ NO.:	336892
CHECKED BY:	M. LENNON	<b>FIGURE 1</b> Page 3 of 10	
APPROVED BY:	M. FIRSTENBERG		
DATE:	OCTOBER 2020		



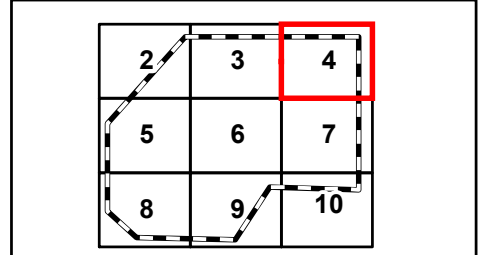
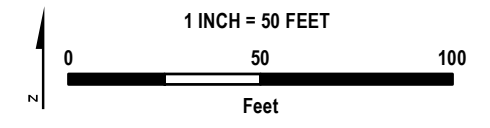
**LEGEND**

-  PROJECT BOUNDARY
-  2-FT CONTOUR

**NOTES**

1. PLAN REVISED ON 10/16/2020.
2. PARCEL BOUNDARIES ARE ACCESSED FROM MASSGIS SHUTESBURY LEVEL3 PARCEL DATABASE, 2018.
3. WETLAND AND STREAM FLAGS ARE DELINEATED BY TRC WETLAND SCIENTISTS ON OCTOBER 23, 2019 AND ON APRIL 17 AND MAY 6, 2020. FLAGS SURVEYED VIA GEODE WITH SUBMETER ACCURACY. DATA IS COLLECTED IN WGS 1984 HORIZONTAL DATUM. STREAM AND WETLAND BOUNDARIES ARE GENERATED BY TRC ON DESKTOP UTILIZING DELINEATED FLAGS.
4. 100-FT BUFFER ZONE IS GENERATED BY TRC FROM DELINEATED WETLAND RESOURCE AREAS.
5. CONTOURS GENERATED FROM 1-METER USGS NED, 2015 (NORTH AMERICAN VERTICAL DATUM OF 1988), MASSGIS.

**PLANS NOT FOR CONSTRUCTION**



PROJECT: **PRATT CORNER ROAD EAST PROJECT  
FRANKLIN COUNTY, MASSACHUSETTS**

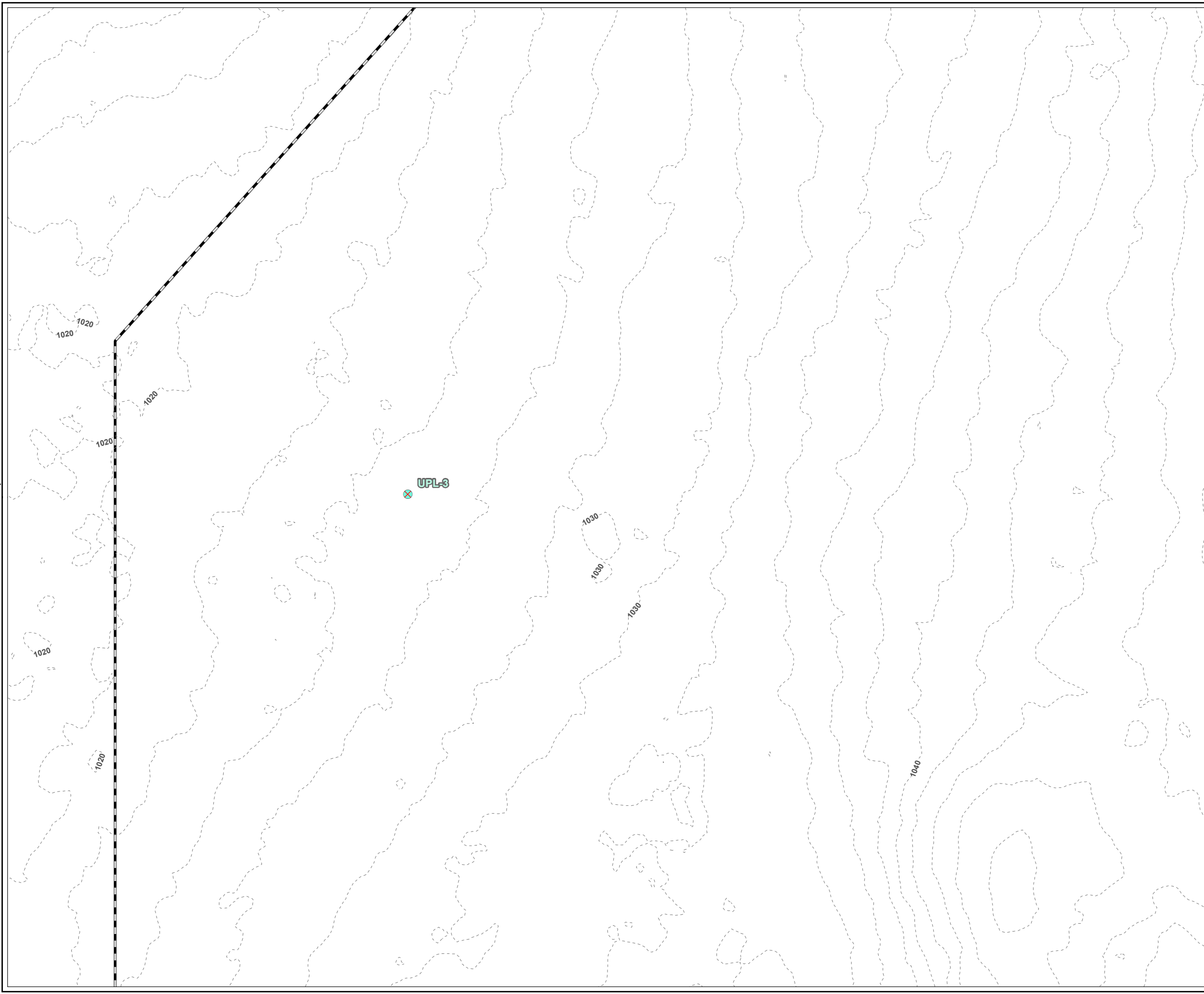
TITLE: **DELINEATED  
RESOURCES MAP**

DRAWN BY: S. MOTURI	PROJ NO.: 336892
CHECKED BY: M. LENNON	<b>FIGURE 1</b> Page 4 of 10
APPROVED BY: M. FIRSTENBERG	
DATE: OCTOBER 2020	






650 SUFFOLK STREET  
LOWELL, MA 01854





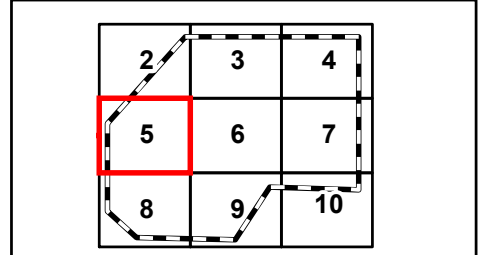
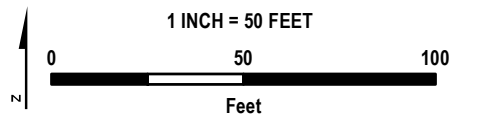
**LEGEND**

-  PROJECT
-  USACE PLOT
-  2-FT CONTOUR

**NOTES**

1. PLAN REVISED ON 10/16/2020.
2. PARCEL BOUNDARIES ARE ACCESSED FROM MASSGIS SHUTESBURY LEVEL3 PARCEL DATABASE, 2018.
3. WETLAND AND STREAM FLAGS ARE DELINEATED BY TRC WETLAND SCIENTISTS ON OCTOBER 23, 2019 AND ON APRIL 17 AND MAY 6, 2020. FLAGS SURVEYED VIA GEODE WITH SUBMETER ACCURACY. DATA IS COLLECTED IN WGS 1984 HORIZONTAL DATUM. STREAM AND WETLAND BOUNDARIES ARE GENERATED BY TRC ON DESKTOP UTILIZING DELINEATED FLAGS.
4. 100-FT BUFFER ZONE IS GENERATED BY TRC FROM DELINEATED WETLAND RESOURCE AREAS.
5. CONTOURS GENERATED FROM 1-METER USGS NED, 2015 (NORTH AMERICAN VERTICAL DATUM OF 1988), MASSGIS.

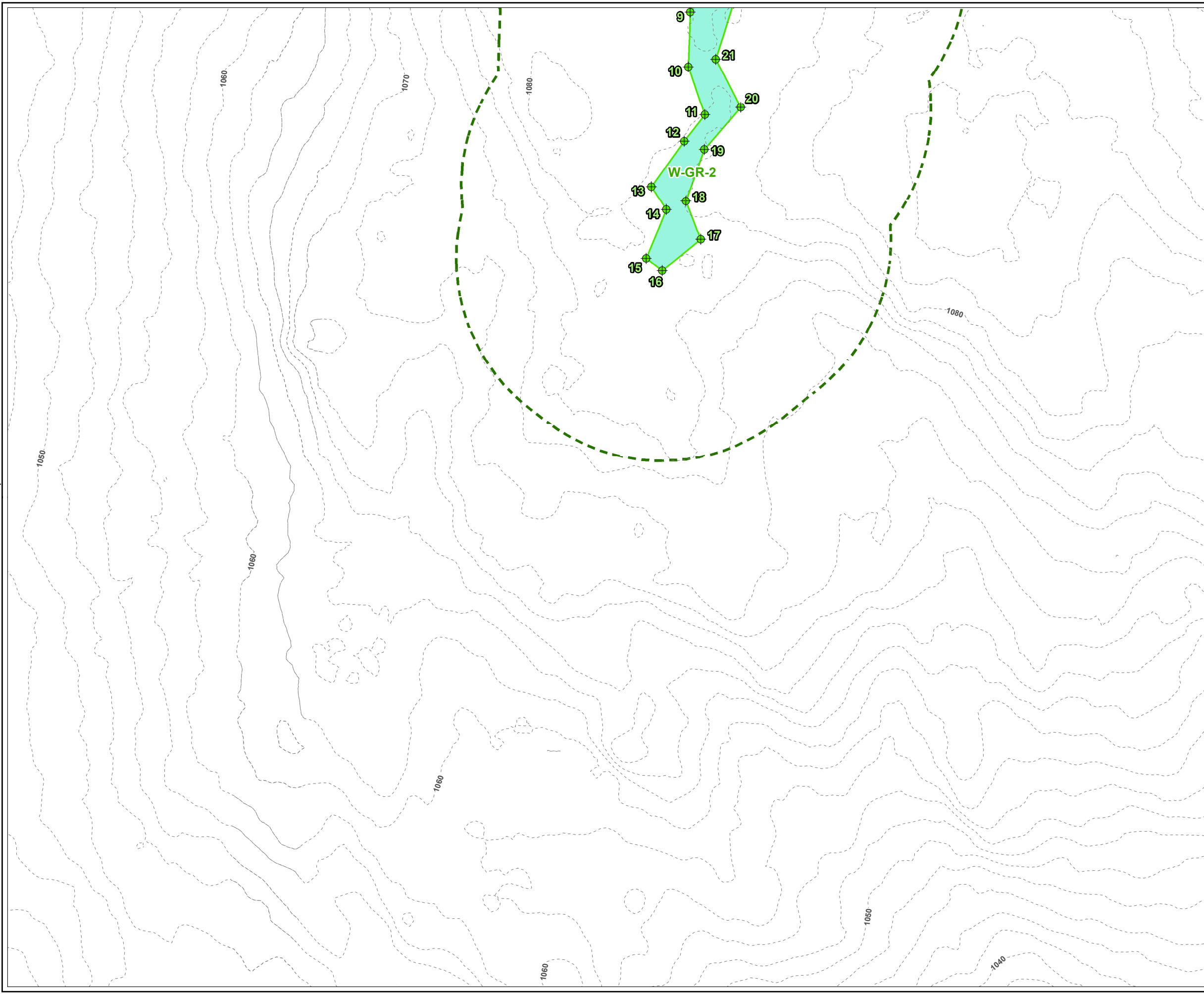
**PLANS NOT FOR CONSTRUCTION**



PROJECT:		<b>PRATT CORNER ROAD EAST PROJECT FRANKLIN COUNTY, MASSACHUSETTS</b>	
TITLE:			
<b>DELINEATED RESOURCES MAP</b>			
DRAWN BY:	S. MOTURI	PROJ NO.:	336892
CHECKED BY:	M. LENNON	<b>FIGURE 1</b> Page 5 of 10	
APPROVED BY:	M. FIRSTENBERG		
DATE:	OCTOBER 2020		



650 SUFFOLK STREET  
LOWELL, MA 01854



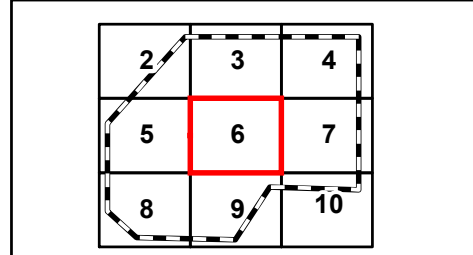
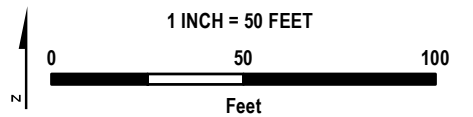
**LEGEND**

- PROJECT
- WETLAND
- SHUTESBURY BYLAW JURISDICTIONAL WETLAND
- DELINEATED WETLAND BOUNDARY
- 100-FT WETLAND
- 2-FT CONTOUR

**NOTES**

1. PLAN REVISED ON 10/16/2020.
2. PARCEL BOUNDARIES ARE ACCESSED FROM MASSGIS SHUTESBURY LEVEL3 PARCEL DATABASE, 2018.
3. WETLAND AND STREAM FLAGS ARE DELINEATED BY TRC WETLAND SCIENTISTS ON OCTOBER 23, 2019 AND ON APRIL 17 AND MAY 6, 2020. FLAGS SURVEYED VIA GEODE WITH SUBMETER ACCURACY. DATA IS COLLECTED IN WGS 1984 HORIZONTAL DATUM. STREAM AND WETLAND BOUNDARIES ARE GENERATED BY TRC ON DESKTOP UTILIZING DELINEATED FLAGS.
4. 100-FT BUFFER ZONE IS GENERATED BY TRC FROM DELINEATED WETLAND RESOURCE AREAS.
5. CONTOURS GENERATED FROM 1-METER USGS NED, 2015 (NORTH AMERICAN VERTICAL DATUM OF 1988), MASSGIS.

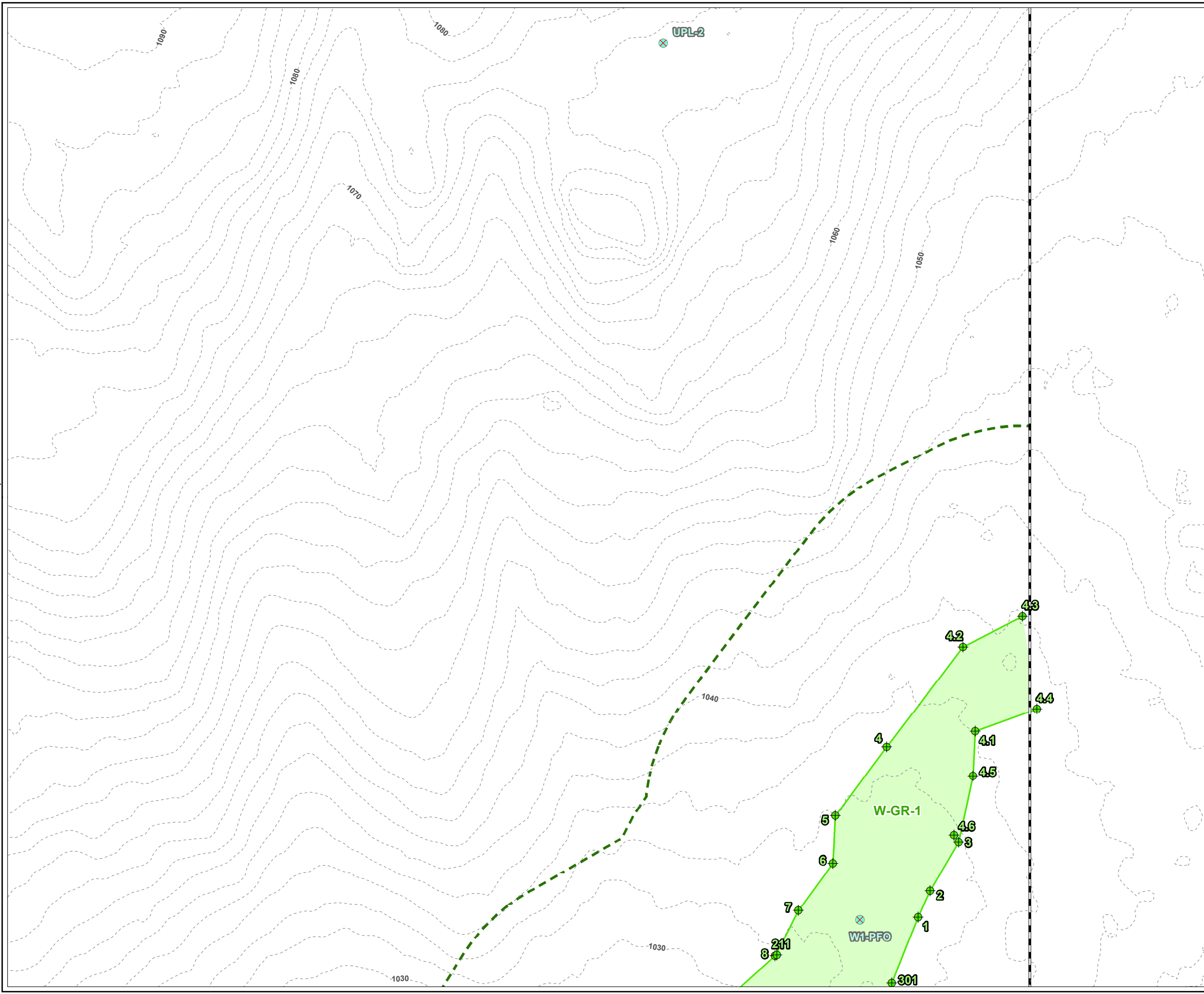
**PLANS NOT FOR CONSTRUCTION**



PROJECT:		<b>PRATT CORNER ROAD EAST PROJECT FRANKLIN COUNTY, MASSACHUSETTS</b>	
TITLE:		<b>DELINEATED RESOURCES MAP</b>	
DRAWN BY:	S. MOTURI	PROJ NO.:	336892
CHECKED BY:	M. LENNON	<b>FIGURE 1</b> Page 6 of 10	
APPROVED BY:	M. FIRSTENBERG		
DATE:	OCTOBER 2020		



650 SUFFOLK STREET  
LOWELL, MA 01854



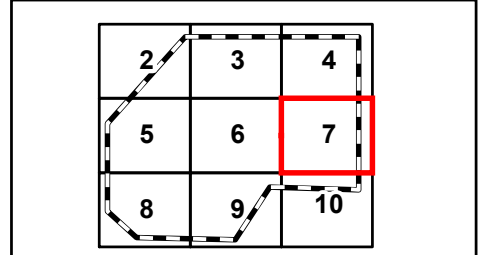
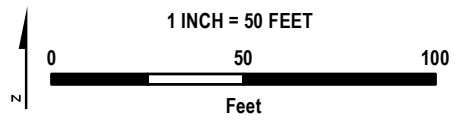
**LEGEND**

- PROJECT BOUNDARY
- WETLAND FLAG
- USACE PLOT
- MASSDEP/SHUTESBURY BYLAW JURISDICTIONAL WETLAND
- DELINEATED WETLAND BOUNDARY
- 100-FT WETLAND BUFFER
- 2-FT CONTOUR

**NOTES**

1. PLAN REVISED ON 10/16/2020.
2. PARCEL BOUNDARIES ARE ACCESSED FROM MASSGIS SHUTESBURY LEVEL3 PARCEL DATABASE, 2018.
3. WETLAND AND STREAM FLAGS ARE DELINEATED BY TRC WETLAND SCIENTISTS ON OCTOBER 23, 2019 AND ON APRIL 17 AND MAY 6, 2020. FLAGS SURVEYED VIA GEODE WITH SUBMETER ACCURACY. DATA IS COLLECTED IN WGS 1984 HORIZONTAL DATUM. STREAM AND WETLAND BOUNDARIES ARE GENERATED BY TRC ON DESKTOP UTILIZING DELINEATED FLAGS.
4. 100-FT BUFFER ZONE IS GENERATED BY TRC FROM DELINEATED WETLAND RESOURCE AREAS.
5. CONTOURS GENERATED FROM 1-METER USGS NED, 2015 (NORTH AMERICAN VERTICAL DATUM OF 1988), MASSGIS.

**PLANS NOT FOR CONSTRUCTION**



PROJECT: **PRATT CORNER ROAD EAST PROJECT  
FRANKLIN COUNTY, MASSACHUSETTS**

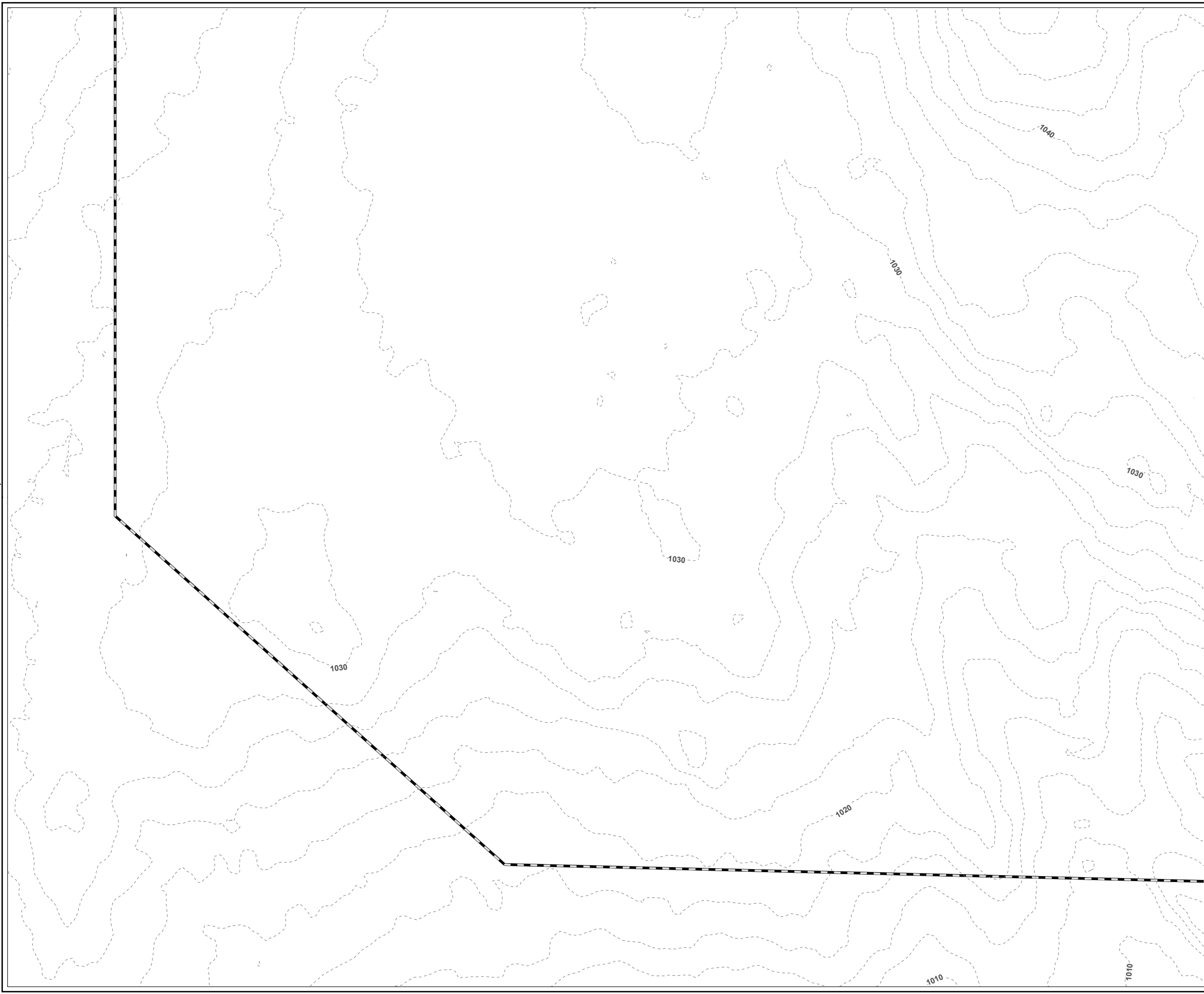
TITLE: **DELINEATED  
RESOURCES MAP**

DRAWN BY: S. MOTURI	PROJ NO.: 336892
CHECKED BY: M. LENNON	<b>FIGURE 1</b> Page 7 of 10
APPROVED BY: M. FIRSTENBERG	
DATE: OCTOBER 2020	



**TRC**

650 SUFFOLK STREET  
LOWELL, MA 01854

FILE NO.: Pratt\_East\_ANRAD\_Series\_11x17\_20201028.mxd



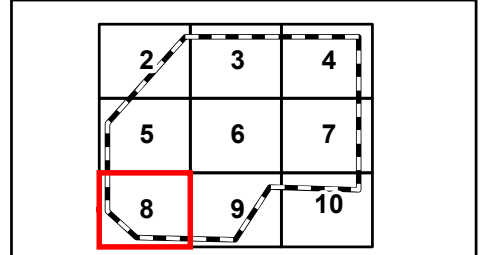
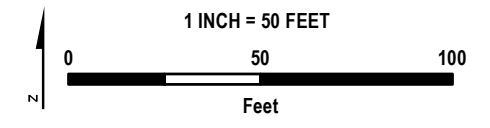
**LEGEND**

-  PROJECT BOUNDARY
-  2-FT CONTOUR

**NOTES**

1. PLAN REVISED ON 10/16/2020.
2. PARCEL BOUNDARIES ARE ACCESSED FROM MASSGIS SHUTESBURY LEVEL3 PARCEL DATABASE, 2018.
3. WETLAND AND STREAM FLAGS ARE DELINEATED BY TRC WETLAND SCIENTISTS ON OCTOBER 23, 2019 AND ON APRIL 17 AND MAY 6, 2020. FLAGS SURVEYED VIA GEODE WITH SUBMETER ACCURACY. DATA IS COLLECTED IN WGS 1984 HORIZONTAL DATUM. STREAM AND WETLAND BOUNDARIES ARE GENERATED BY TRC ON DESKTOP UTILIZING DELINEATED FLAGS.
4. 100-FT BUFFER ZONE IS GENERATED BY TRC FROM DELINEATED WETLAND RESOURCE AREAS.
5. CONTOURS GENERATED FROM 1-METER USGS NED, 2015 (NORTH AMERICAN VERTICAL DATUM OF 1988), MASSGIS.

**PLANS NOT FOR CONSTRUCTION**



PROJECT: **PRATT CORNER ROAD EAST PROJECT  
FRANKLIN COUNTY, MASSACHUSETTS**

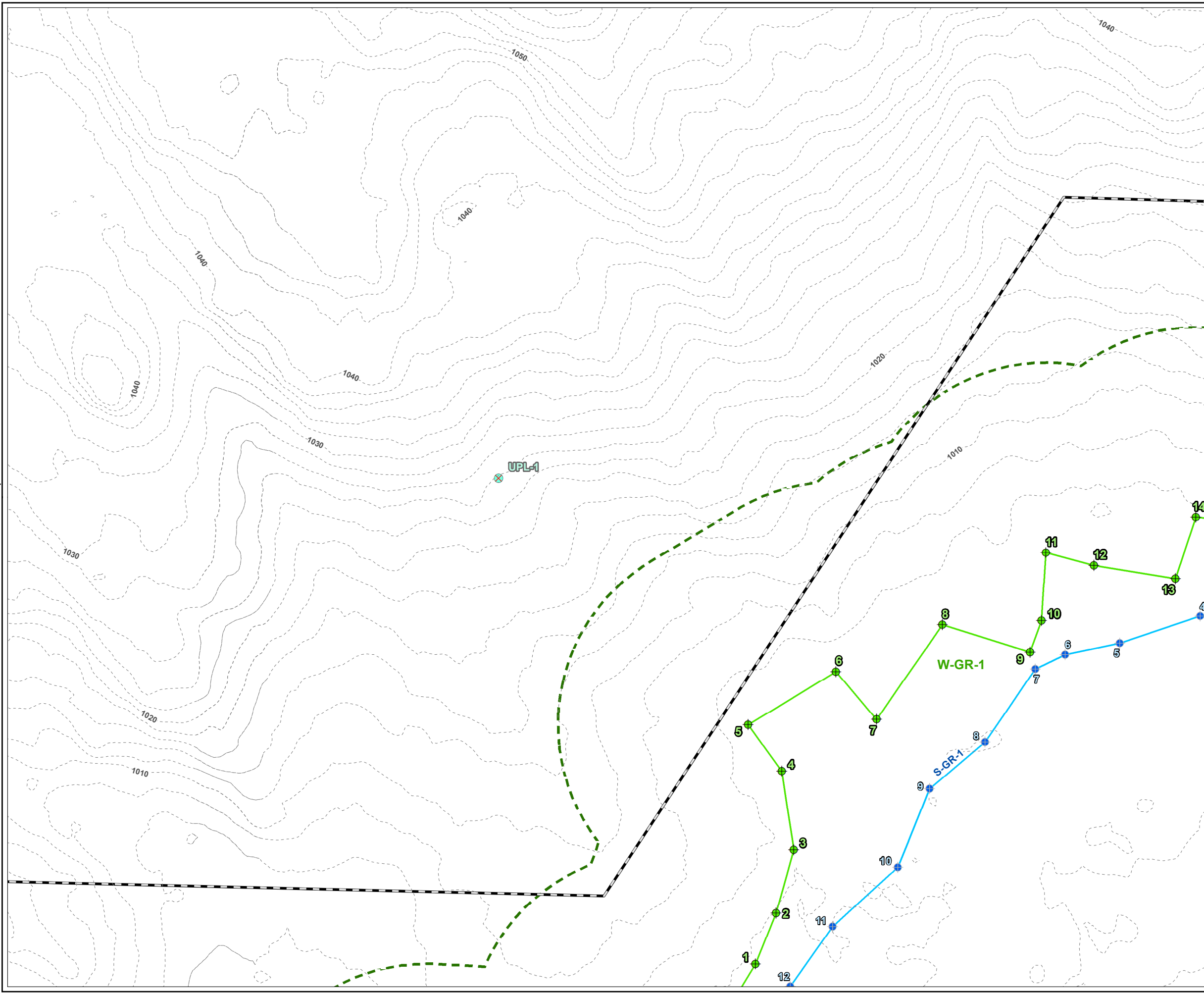
TITLE: **DELINEATED  
RESOURCES MAP**

DRAWN BY: S. MOTURI	PROJ NO.: 336892
CHECKED BY: M. LENNON	<b>FIGURE 1</b> Page 8 of 10
APPROVED BY: M. FIRSTENBERG	
DATE: OCTOBER 2020	



650 SUFFOLK STREET  
LOWELL, MA 01854

TRC - GIS  
 Coordinate System: NAD 1983 StatePlane Massachusetts Mainland FIPS 2001 Feet (Foot US)  
 Map Rotation: 0  
 Plot Date: 10/28/2020 11:55:19 AM by SMOTURI -- LAYOUT: ANSIB(11x17)  
 Path: S:\1-PROJECTS\AMP\336892\_0000\_0005\_Prat\_East\Prat\_East\_ANRAD\_Series\_11x17\_20201028.mxd

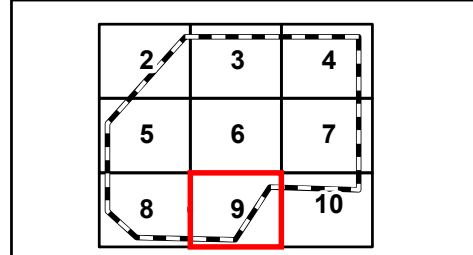
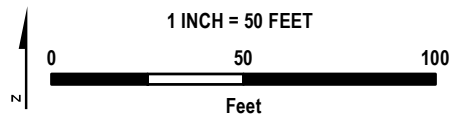


**LEGEND**

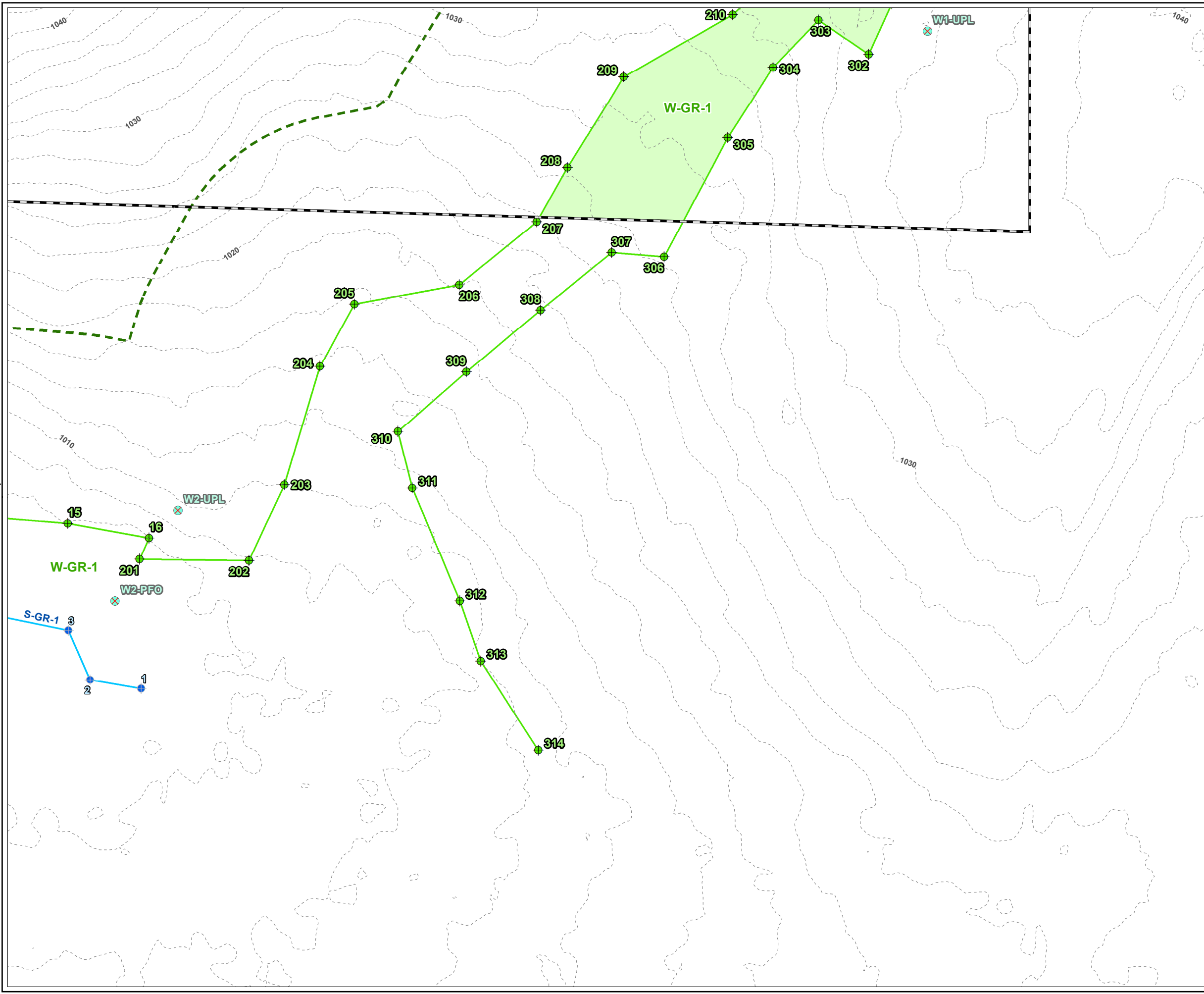
- PROJECT
- WETLAND FLAG
- INLAND BANK
- USACE PLOT
- DELINEATED INTERMITTENT STREAM INLAND BANK
- DELINEATED WETLAND BOUNDARY
- 100-FT WETLAND
- 2-FT CONTOUR

- NOTES**
1. PLAN REVISED ON 10/16/2020.
  2. PARCEL BOUNDARIES ARE ACCESSED FROM MASSGIS SHUTESBURY LEVEL3 PARCEL DATABASE, 2018.
  3. WETLAND AND STREAM FLAGS ARE DELINEATED BY TRC WETLAND SCIENTISTS ON OCTOBER 23, 2019 AND ON APRIL 17 AND MAY 6, 2020. FLAGS SURVEYED VIA GEODE WITH SUBMETER ACCURACY. DATA IS COLLECTED IN WGS 1984 HORIZONTAL DATUM. STREAM AND WETLAND BOUNDARIES ARE GENERATED BY TRC ON DESKTOP UTILIZING DELINEATED FLAGS.
  4. 100-FT BUFFER ZONE IS GENERATED BY TRC FROM DELINEATED WETLAND RESOURCE AREAS.
  5. CONTOURS GENERATED FROM 1-METER USGS NED, 2015 (NORTH AMERICAN VERTICAL DATUM OF 1988), MASSGIS.

**PLANS NOT FOR CONSTRUCTION**



PROJECT:		<b>PRATT CORNER ROAD EAST PROJECT FRANKLIN COUNTY, MASSACHUSETTS</b>	
TITLE:		<b>DELINEATED RESOURCES MAP</b>	
DRAWN BY:	S. MOTURI	PROJ NO.:	336892
CHECKED BY:	M. LENNON	<b>FIGURE 1</b> Page 9 of 10	
APPROVED BY:	M. FIRSTENBERG		
DATE:	OCTOBER 2020		

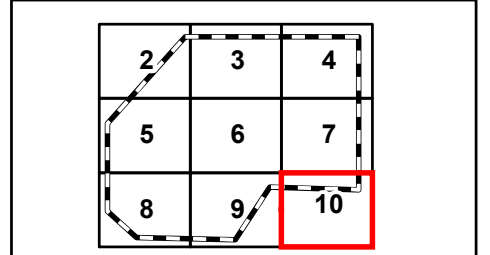
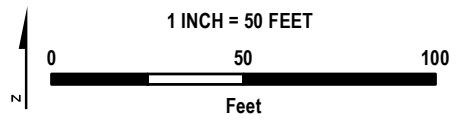


**LEGEND**

- PROJECT BOUNDARY
- WETLAND FLAG
- INLAND BANK FLAG
- USACE PLOT
- DELINEATED INTERMITTENT STREAM INLAND BANK
- MASSDEP/SHUTESBURY BYLAW JURISDICTIONAL WETLAND
- DELINEATED WETLAND BOUNDARY
- 100-FT WETLAND BUFFER
- 2-FT CONTOUR

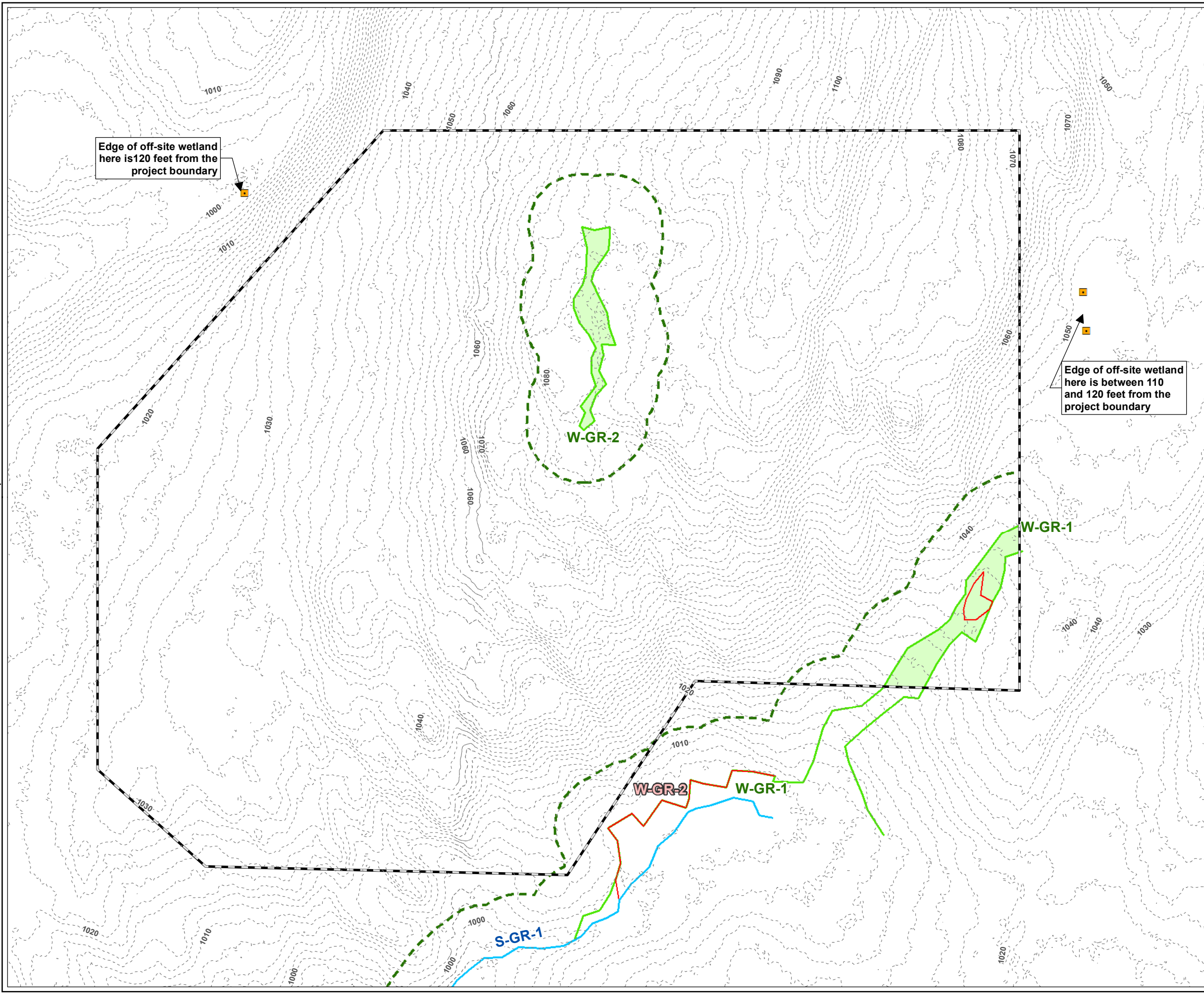
- NOTES**
1. PLAN REVISED ON 10/16/2020.
  2. PARCEL BOUNDARIES ARE ACCESSED FROM MASSGIS SHUTESBURY LEVEL3 PARCEL DATABASE, 2018.
  3. WETLAND AND STREAM FLAGS ARE DELINEATED BY TRC WETLAND SCIENTISTS ON OCTOBER 23, 2019 AND ON APRIL 17 AND MAY 6, 2020. FLAGS SURVEYED VIA GEODE WITH SUBMETER ACCURACY. DATA IS COLLECTED IN WGS 1984 HORIZONTAL DATUM. STREAM AND WETLAND BOUNDARIES ARE GENERATED BY TRC ON DESKTOP UTILIZING DELINEATED FLAGS.
  4. 100-FT BUFFER ZONE IS GENERATED BY TRC FROM DELINEATED WETLAND RESOURCE AREAS.
  5. CONTOURS GENERATED FROM 1-METER USGS NED, 2015 (NORTH AMERICAN VERTICAL DATUM OF 1988), MASSGIS.

**PLANS NOT FOR CONSTRUCTION**



PROJECT:		<b>PRATT CORNER ROAD EAST PROJECT FRANKLIN COUNTY, MASSACHUSETTS</b>	
TITLE:		<b>DELINEATED RESOURCES MAP</b>	
DRAWN BY:	S. MOTURI	PROJ NO.:	336892
CHECKED BY:	M. LENNON	<b>FIGURE 1</b> Page 10 of 10	
APPROVED BY:	M. FIRSTENBERG		
DATE:	OCTOBER 2020		

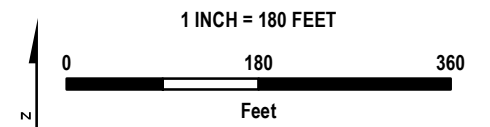
**ATTACHMENT B**  
**Figure 2: Delineated Resources Map Changes**  
**(October 2020)**



- LEGEND**
- PROJECT BOUNDARY
  - FIELD OBSERVATION
  - DELINEATED INTERMITTENT STREAM BANK
  - OLD DELINEATED WETLAND BOUNDARY LINE
  - DELINEATED WETLAND BOUNDARY LINE
  - DELINEATED WETLAND AREA
  - 100-FT WETLAND BUFFER
  - 2-FT CONTOUR
  - # ID NEW DELINEATED STREAM ID
  - # ID OLD DELINEATED WETLAND ID
  - # ID NEW DELINEATED WETLAND ID

- NOTES**
1. PLAN REVISED ON 10/16/2020.
  2. PARCEL BOUNDARIES ARE ACCESSED FROM MASSGIS SHUTESBURY LEVEL3 PARCEL DATABASE, 2018.
  3. 100-FT BUFFER ZONE IS GENERATED BY TRC FROM DELINEATED WETLAND RESOURCE AREAS.
  4. CONTOURS GENERATED FROM 1-METER USGS NED, 2015 (NORTH AMERICAN VERTICAL DATUM OF 1988), MASSGIS.

**PLANS NOT FOR CONSTRUCTION**



PROJECT:		<b>PRATT CORNER ROAD EAST PROJECT FRANKLIN COUNTY, MASSACHUSETTS</b>	
TITLE:		<b>DELINEATED RESOURCES MAP CHANGES</b>	
DRAWN BY:	S. MOTURI	PROJ NO.:	336892
CHECKED BY:	M. LENNON	<b>FIGURE 2</b>	
APPROVED BY:	M. FIRSTENBERG		
DATE:	OCTOBER 2020		



**ATTACHMENT C**  
**Updated WPA Form 4A Page 1**

