



---

# ***ABBREVIATED NOTICE OF RESOURCE AREA DELINEATION***

---

*Filing Under the Massachusetts Wetlands Protection Act  
M.G.L. Chapter 131, Section 40 and the Town of Shutesbury Wetland Bylaw*

## **Baker Road Project West Pelham Road (Parcel ID ZQ-6) Shutesbury, Massachusetts**

*Submitted to:*

**Shutesbury Conservation Commission**  
Shutesbury Town Hall  
1 Cooleyville Road  
Shutesbury, Massachusetts 01072

*Filed by:*

**W.D. Cows, Inc.**  
P.O. Box 9677  
North Amherst, Massachusetts 01059

*Prepared by:*

**TRC Companies**  
650 Suffolk Street  
Lowell, Massachusetts 01854

**January 2021**

January 28, 2021

Town of Shutesbury Conservation Commission  
Shutesbury Town Hall  
1 Cooleyville Road  
Shutesbury, MA 01072

**RE: Baker Road Project – West Pelham Road (Parcel ID ZQ-6)  
Abbreviated Notice of Resource Area Delineation (ANRAD)  
Updated Plans & Other Requested Items**

Dear Commissioners:

On behalf of W.D. Cowsls, Inc., TRC Companies (TRC) is pleased to submit updated wetland resource delineation plans and other materials related to the ANRAD for an approximately 47-acre portion of the parcel off Pratt Corner Road listed by the Shutesbury tax assessor as Parcel ID ZG-2 in Shutesbury, MA (Site). The attached materials are based on the following meetings, site visits, documents, and emails:

- Shutesbury Conservation Commission (SCC) meeting – January 9, 2020;
- Site visits with Stockman Associates on April 1 and May 7, 2020;
- Stockman Associates Peer Review Comments dated April 10 and June 25, 2020; and
- SCC email dated July 25, 2020.

The following items are attached:

1. Attachment A – Figure 1: Delineated Resources Map (January 2021)
2. Attachment B – Figure 2: Delineated Resources Map Changes (January 2021)
3. Attachment C – Updated WPA Form 4A Page 1

Attachment A shows the delineated wetland resources at the Site based on the site visits with Stockman Associates. Per the SCC's request, resources have been color-coded based on state and local jurisdictional status. Other minor edits have been made based on the peer review comments. The new isolated wetland (W-MJR-9) in the northeast portion of the Site has an area of 29,806, square feet. Per TRC's calculations, this wetland would need to have between 4 and 5 inches of standing water throughout the wetland to meet the minimum volume requirement of 0.25 acre-feet to qualify as Isolated Land Subject to Flooding (ILSF) under 310 CMR 10.57(2)(b)(1). While a limited amount of flooding within this wetland is possible, no indicators of more extensive flooding were observed during the April and May site visits and it is, therefore, TRC's opinion that this wetland does not qualify as ILSF and is not MassDEP jurisdictional. Therefore, this wetland is shown on the plans as only Shutesbury Bylaw jurisdictional. Other resources presented are jurisdictional under both MassDEP and the Shutesbury Bylaw.

Attachment B shows the differences between the original delineation flag locations and the updated plans. At this site, two new wetlands were identified during the review process (W-MJR-8 and W-MJR-9) and several other previously identified wetlands were expanded and/or combined.

Attachment C includes the updated contact information for W.D. Cowsls as requested by the SCC.

We very much appreciate your review of this information and trust this letter and the attached documents meet the needs of the SCC to issue an Order of Resource Area Delineation. If you should have any questions, please do not hesitate to contact Maria Firstenberg at 978-735-3425 or via email at [MFirstenberg@trccompanies.com](mailto:MFirstenberg@trccompanies.com) or Jeff Brandt at 978-656-3662 or via email at [JBrandt@TRCcompanies.com](mailto:JBrandt@TRCcompanies.com).

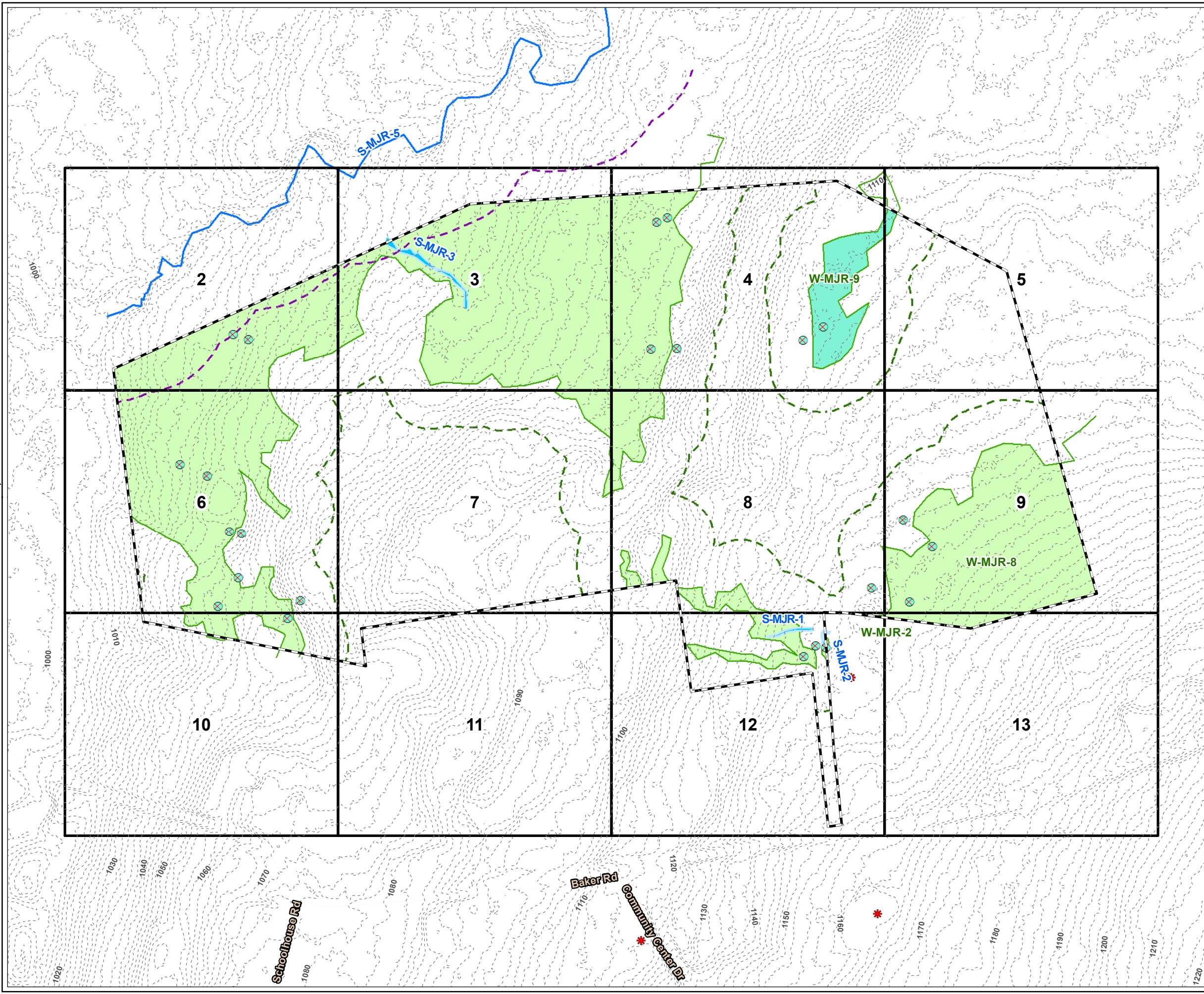
Sincerely,

TRC Companies



Jeff Brandt  
Senior Project Manager

**ATTACHMENT A**  
**Figure 1: Delineated Resources Map**  
**(January 2021)**



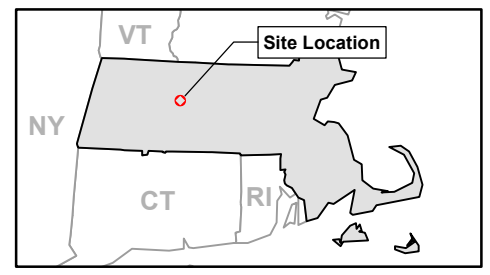
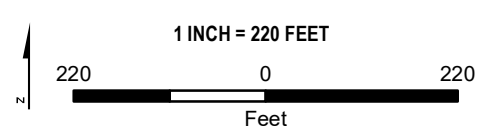
**LEGEND**

- PROJECT BOUNDARY
- 1:50' MAP PAGE
- NHESP POTENTIAL VERNAL POOL
- USACE PLOT
- DELINEATED INTERMITTENT STREAM BANK
- DELINEATED PERENNIAL STREAM BANK AND MAHW
- DELINEATED INTERMITTENT STREAM AREA
- DELINEATED WETLAND BOUNDARY LINE
- MASSDEP/SHUTESBURY BYLAW JURISDICTIONAL WETLAND
- SHUTESBURY BYLAW JURISDICTIONAL WETLAND
- 100-FT WETLAND BUFFER
- 200-FT RIVERFRONT AREA
- 2-FT CONTOUR

**NOTES**

1. PLAN REVISED ON 01/28/2021.
2. PARCEL BOUNDARIES ARE ACCESSED FROM MASSGIS SHUTESBURY LEVEL3 PARCEL DATABASE, 2018.
3. WETLAND AND STREAM FLAGS ARE DELINEATED BY TRC WETLAND SCIENTISTS ON OCTOBER 24, 2019 AND ON APRIL 1 AND MAY 7, 2020. FLAGS SURVEYED VIA GEODE WITH SUBMETER ACCURACY. DATA IS COLLECTED IN WGS 1984 HORIZONTAL DATUM. STREAM AND WETLAND BOUNDARIES ARE GENERATED BY TRC ON DESKTOP UTILIZING DELINEATED FLAGS.
4. 100-FT BUFFER ZONE IS GENERATED BY TRC FROM DELINEATED WETLAND RESOURCE AREAS.
5. 200-FT RIVERFRONT AREA IS GENERATED BY TRC FROM DELINEATED PERENNIAL STREAM
6. CONTOURS GENERATED FROM 1-METER USGS NED, 2015 (NORTH AMERICAN VERTICAL DATUM OF 1988), MASSGIS.

**PLANS NOT FOR CONSTRUCTION**

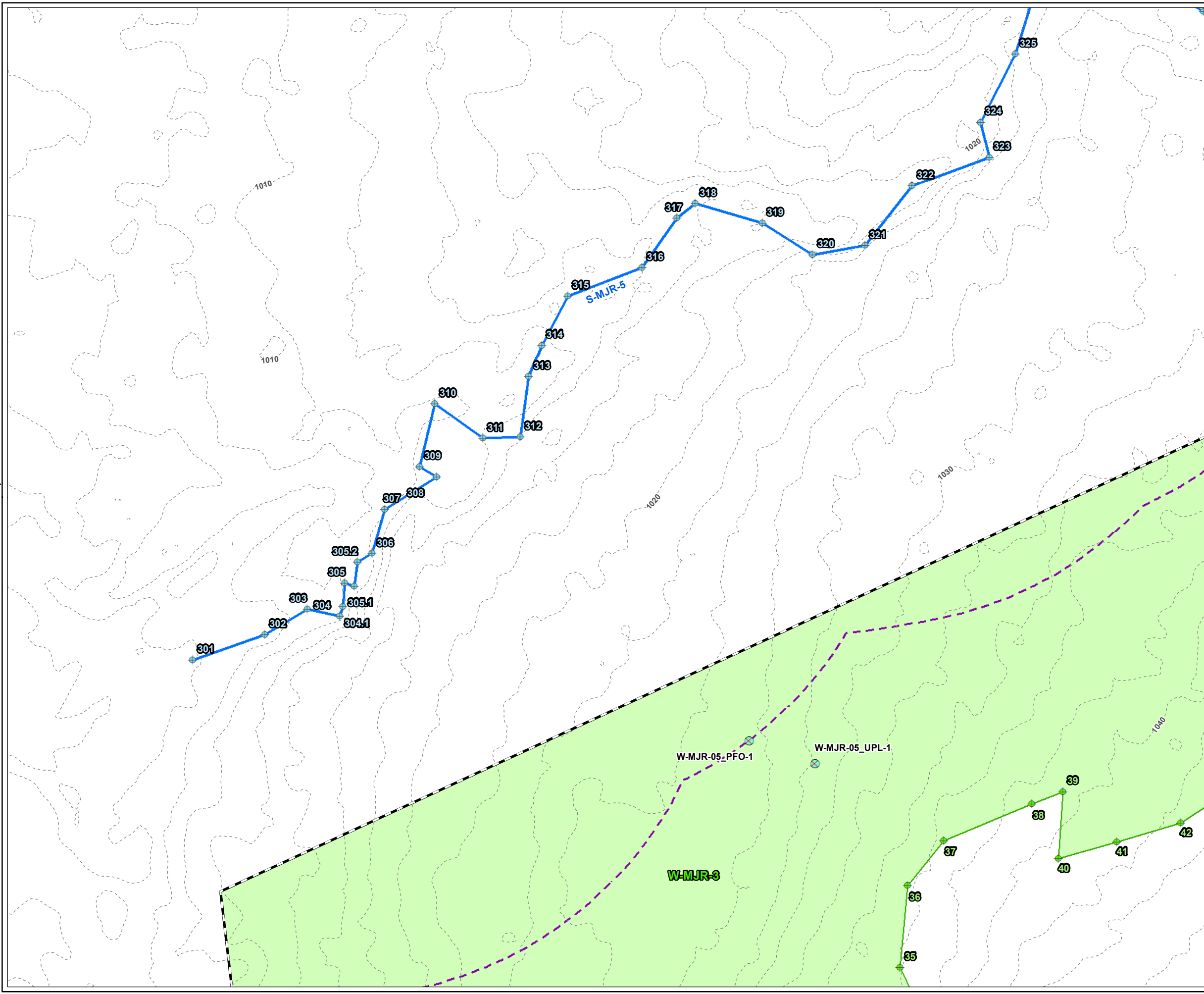


PROJECT:		<b>BAKER STREET ROAD PROJECT FRANKLIN COUNTY, MASSACHUSETTS</b>	
TITLE:		<b>DELINEATED RESOURCES MAP</b>	
DRAWN BY:	S. MOTURI	PROJ NO.:	336892
CHECKED BY:	M. LENNON	<b>FIGURE 1</b> Page 1 of 13	
APPROVED BY:	M. FIRSTENBERG		
DATE:	JANUARY 2021		



650 SUFFOLK STREET  
LOWELL, MA 01854





**LEGEND**

- PROJECT BOUNDARY
- WETLAND FLAG
- STREAM FLAG
- USACE PLOT
- DELINEATED PERENNIAL STREAM BANK AND MAHW
- MASSDEP/SHUTESBURY BYLAW JURISDICTIONAL WETLAND
- DELINEATED WETLAND BOUNDARY LINE
- 200-FT RIVERFRONT AREA
- 2-FT CONTOUR

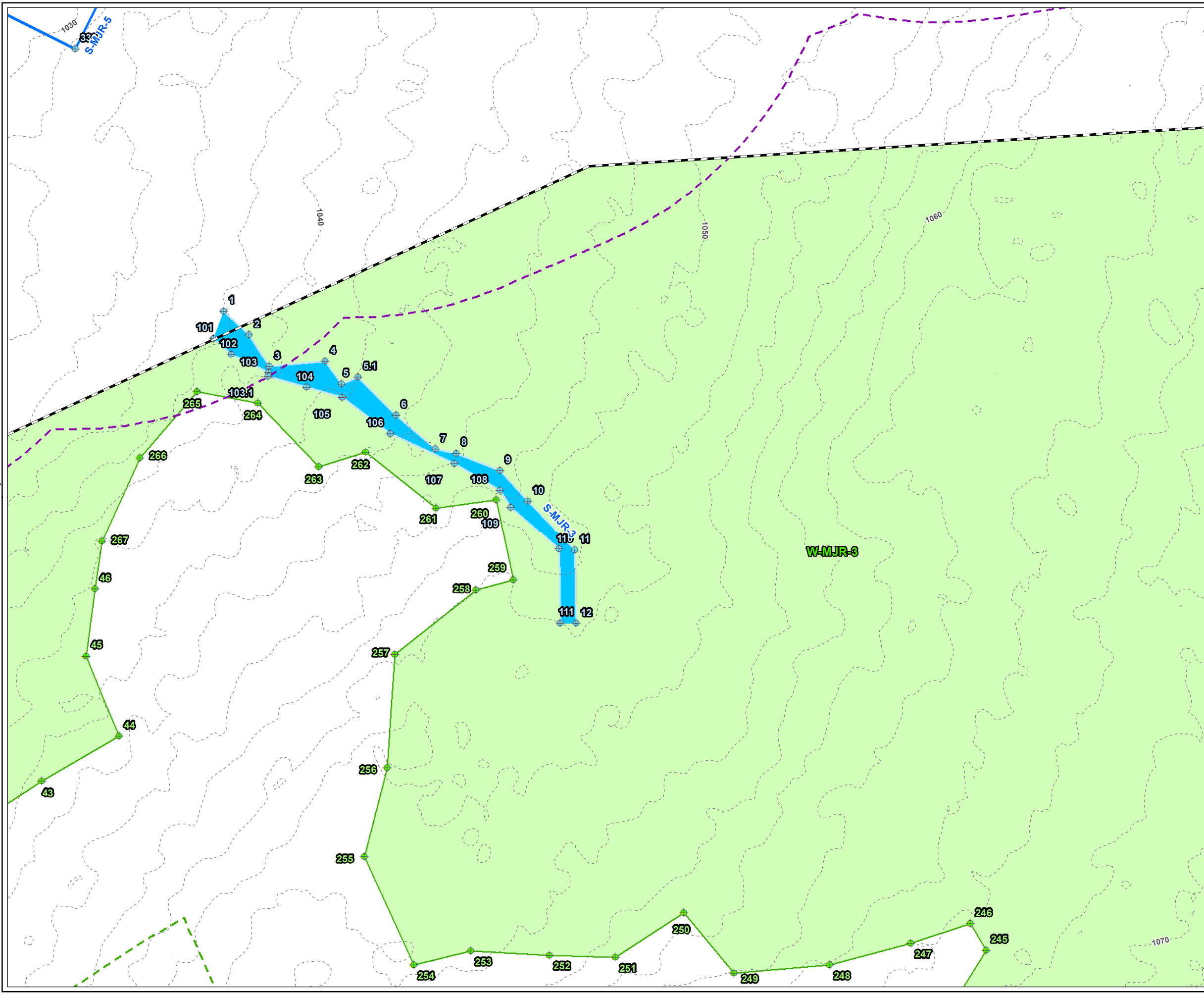
- NOTES**
1. PLAN REVISED ON 10/28/2020.
  2. PARCEL BOUNDARIES ARE ACCESSED FROM MASSGIS SHUTESBURY LEVEL3 PARCEL DATABASE, 2018.
  3. WETLAND AND STREAM FLAGS ARE DELINEATED BY TRC WETLAND SCIENTISTS ON OCTOBER 24, 2019 AND ON APRIL 1 AND MAY 7, 2020. FLAGS SURVEYED VIA GEODE WITH SUBMETER ACCURACY. DATA IS COLLECTED IN WGS 1984 HORIZONTAL DATUM. STREAM AND WETLAND BOUNDARIES ARE GENERATED BY TRC ON DESKTOP UTILIZING DELINEATED FLAGS.
  4. 100-FT BUFFER ZONE IS GENERATED BY TRC FROM DELINEATED WETLAND RESOURCE AREAS.
  5. 200-FT RIVERFRONT AREA IS GENERATED BY TRC FROM DELINEATED PERENNIAL STREAM
  6. CONTOURS GENERATED FROM 1-METER USGS NED, 2015 (NORTH AMERICAN VERTICAL DATUM OF 1988), MASSGIS.

**PLANS NOT FOR CONSTRUCTION**

1 INCH = 220 FEET

Feet

PROJECT:		<b>BAKER STREET ROAD PROJECT FRANKLIN COUNTY, MASSACHUSETTS</b>	
TITLE:		<b>DELINEATED RESOURCES MAP</b>	
DRAWN BY:	S. MOTURI	PROJ NO.:	336892
CHECKED BY:	M. REEGAN	<b>FIGURE 1</b> Page 2 of 13	
APPROVED BY:	M. FIRSTENBERG		
DATE:	JANUARY 2021		



**LEGEND**

- PROJECT BOUNDARY
- WETLAND FLAG
- STREAM FLAG
- DELINEATED INTERMITTENT STREAM BANK
- DELINEATED PERENNIAL STREAM BANK AND MAHW
- DELINEATED INTERMITTENT STREAM AREA
- MASSDEP/SHUTESBURY BYLAW JURISDICTIONAL WETLAND
- DELINEATED WETLAND BOUNDARY LINE
- 100-FT WETLAND BUFFER
- 200-FT RIVERFRONT AREA
- 2-FT CONTOUR

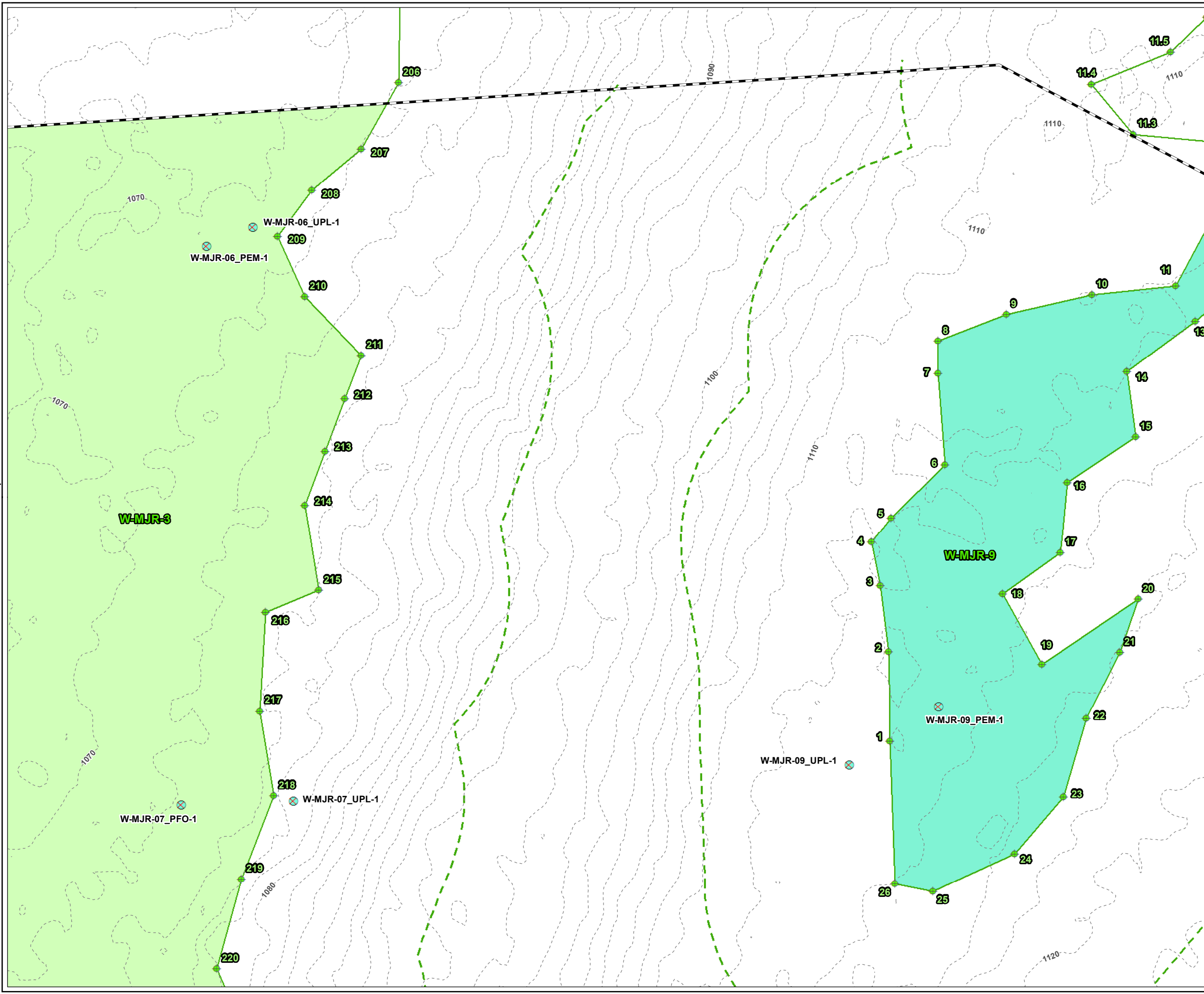
- NOTES**
1. PLAN REVISED ON 10/28/2020.
  2. PARCEL BOUNDARIES ARE ACCESSED FROM MASSGIS SHUTESBURY LEVEL3 PARCEL DATABASE, 2018.
  3. WETLAND AND STREAM FLAGS ARE DELINEATED BY TRC WETLAND SCIENTISTS ON OCTOBER 24, 2019 AND ON APRIL 1 AND MAY 7, 2020. FLAGS SURVEYED VIA GEODE WITH SUBMETER ACCURACY. DATA IS COLLECTED IN WGS 1984 HORIZONTAL DATUM. STREAM AND WETLAND BOUNDARIES ARE GENERATED BY TRC ON DESKTOP UTILIZING DELINEATED FLAGS.
  4. 100-FT BUFFER ZONE IS GENERATED BY TRC FROM DELINEATED WETLAND RESOURCE AREAS.
  5. 200-FT RIVERFRONT AREA IS GENERATED BY TRC FROM DELINEATED PERENNIAL STREAM
  6. CONTOURS GENERATED FROM 1-METER USGS NED, 2015 (NORTH AMERICAN VERTICAL DATUM OF 1988), MASSGIS.

**PLANS NOT FOR CONSTRUCTION**

1 INCH = 220 FEET

Feet

<b>PROJECT:</b>	
<b>BAKER STREET ROAD PROJECT FRANKLIN COUNTY, MASSACHUSETTS</b>	
<b>TITLE:</b>	
<b>DELINEATED RESOURCES MAP</b>	
DRAWN BY: S. MOTURI	PROJ NO.: 336892
CHECKED BY: M. REEGAN	<b>FIGURE 1</b> Page 3 of 13
APPROVED BY: M. FIRSTENBERG	
DATE: JANUARY 2021	



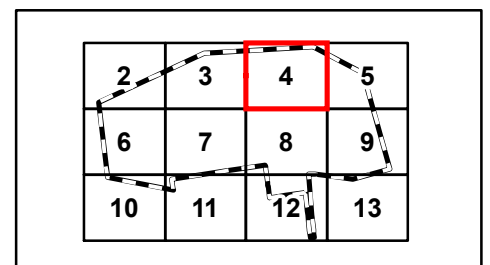
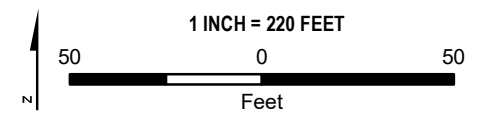
**LEGEND**

- PROJECT BOUNDARY
- WETLAND FLAG
- USACE PLOT
- MASSDEP/SHUTESBURY BYLAW JURISDICTIONAL WETLAND
- SHUTESBURY BYLAW JURISDICTIONAL WETLAND
- DELINEATED WETLAND BOUNDARY LINE
- 100-FT WETLAND BUFFER
- 2-FT CONTOUR

**NOTES**

1. PLAN REVISED ON 10/28/2020.
2. PARCEL BOUNDARIES ARE ACCESSED FROM MASSGIS SHUTESBURY LEVEL3 PARCEL DATABASE, 2018.
3. WETLAND AND STREAM FLAGS ARE DELINEATED BY TRC WETLAND SCIENTISTS ON OCTOBER 24, 2019 AND ON APRIL 1 AND MAY 7, 2020. FLAGS SURVEYED VIA GEODE WITH SUBMETER ACCURACY. DATA IS COLLECTED IN WGS 1984 HORIZONTAL DATUM. STREAM AND WETLAND BOUNDARIES ARE GENERATED BY TRC ON DESKTOP UTILIZING DELINEATED FLAGS.
4. 100-FT BUFFER ZONE IS GENERATED BY TRC FROM DELINEATED WETLAND RESOURCE AREAS.
5. 200-FT RIVERFRONT AREA IS GENERATED BY TRC FROM DELINEATED PERENNIAL STREAM
6. CONTOURS GENERATED FROM 1-METER USGS NED, 2015 (NORTH AMERICAN VERTICAL DATUM OF 1988), MASSGIS.

PLANS NOT FOR CONSTRUCTION

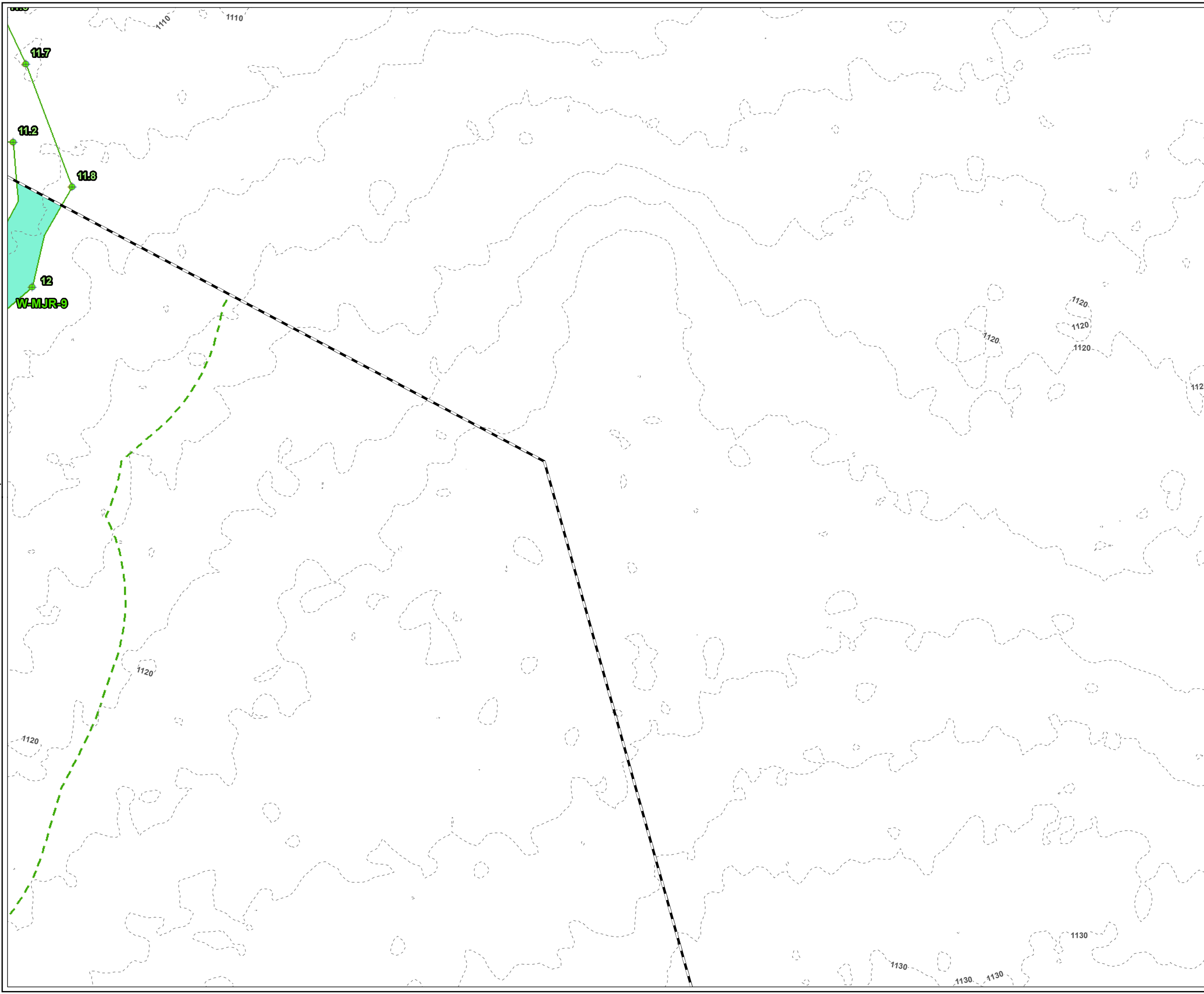


PROJECT:		<b>BAKER STREET ROAD PROJECT FRANKLIN COUNTY, MASSACHUSETTS</b>	
TITLE:		<b>DELINEATED RESOURCES MAP</b>	
DRAWN BY:	S. MOTURI	PROJ NO.:	336892
CHECKED BY:	M. REEGAN	<b>FIGURE 1</b> Page 4 of 13	
APPROVED BY:	M. FIRSTENBERG		
DATE:	JANUARY 2021		



650 SUFFOLK STREET  
LOWELL, MA 01854





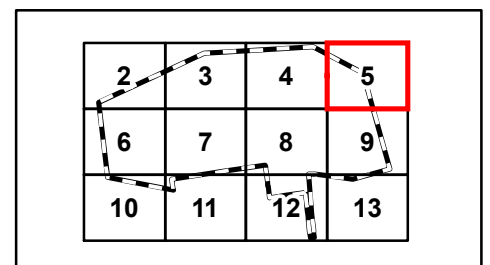
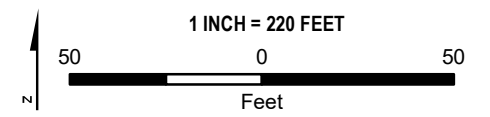
**LEGEND**

- PROJECT BOUNDARY
- WETLAND FLAG
- SHUTESBURY BYLAW JURISDICTIONAL WETLAND
- DELINEATED WETLAND BOUNDARY LINE
- 100-FT WETLAND BUFFER
- 2-FT CONTOUR

**NOTES**

1. PLAN REVISED ON 10/28/2020.
2. PARCEL BOUNDARIES ARE ACCESSED FROM MASSGIS SHUTESBURY LEVEL3 PARCEL DATABASE, 2018.
3. WETLAND AND STREAM FLAGS ARE DELINEATED BY TRC WETLAND SCIENTISTS ON OCTOBER 24, 2019 AND ON APRIL 1 AND MAY 7, 2020. FLAGS SURVEYED VIA GEODE WITH SUBMETER ACCURACY. DATA IS COLLECTED IN WGS 1984 HORIZONTAL DATUM. STREAM AND WETLAND BOUNDARIES ARE GENERATED BY TRC ON DESKTOP UTILIZING DELINEATED FLAGS.
4. 100-FT BUFFER ZONE IS GENERATED BY TRC FROM DELINEATED WETLAND RESOURCE AREAS.
5. 200-FT RIVERFRONT AREA IS GENERATED BY TRC FROM DELINEATED PERENNIAL STREAM
6. CONTOURS GENERATED FROM 1-METER USGS NED, 2015 (NORTH AMERICAN VERTICAL DATUM OF 1988), MASSGIS.

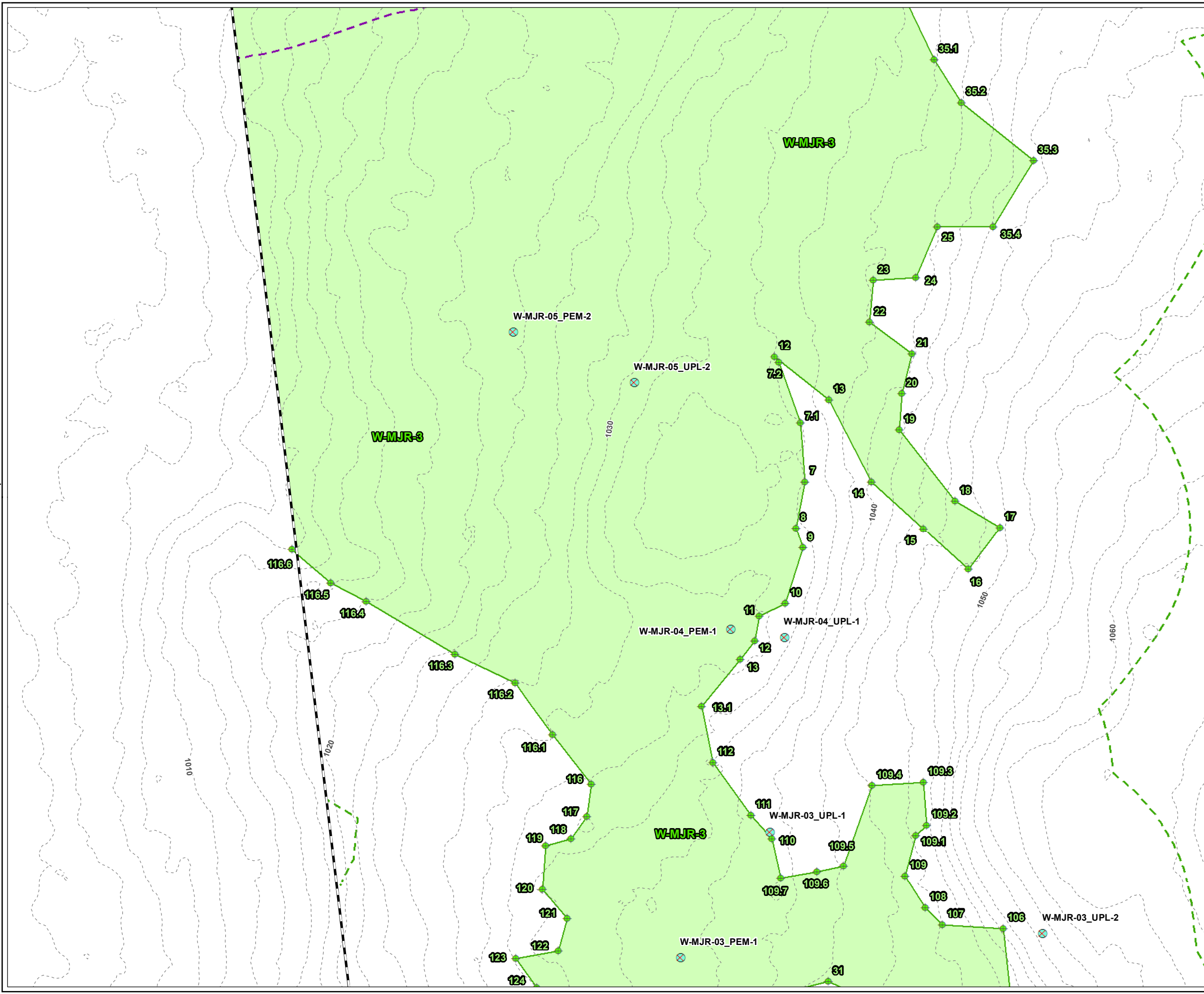
**PLANS NOT FOR CONSTRUCTION**



PROJECT:		<b>BAKER STREET ROAD PROJECT FRANKLIN COUNTY, MASSACHUSETTS</b>	
TITLE:		<b>DELINEATED RESOURCES MAP</b>	
DRAWN BY:	S. MOTURI	PROJ NO.:	336892
CHECKED BY:	M. REEGAN	<b>FIGURE 1</b> Page 5 of 13	
APPROVED BY:	M. FIRSTENBERG		
DATE:	JANUARY 2021		



650 SUFFOLK STREET  
LOWELL, MA 01854



**LEGEND**

- PROJECT BOUNDARY
- WETLAND FLAG
- USACE PLOT
- MASSDEP/SHUTESBURY BYLAW JURISDICTIONAL WETLAND
- DELINEATED WETLAND BOUNDARY LINE
- 100-FT WETLAND BUFFER
- 200-FT RIVERFRONT AREA
- 2-FT CONTOUR

- NOTES**
1. PLAN REVISED ON 10/28/2020.
  2. PARCEL BOUNDARIES ARE ACCESSED FROM MASSGIS SHUTESBURY LEVEL3 PARCEL DATABASE, 2018.
  3. WETLAND AND STREAM FLAGS ARE DELINEATED BY TRC WETLAND SCIENTISTS ON OCTOBER 24, 2019 AND ON APRIL 1 AND MAY 7, 2020. FLAGS SURVEYED VIA GEODE WITH SUBMETER ACCURACY. DATA IS COLLECTED IN WGS 1984 HORIZONTAL DATUM. STREAM AND WETLAND BOUNDARIES ARE GENERATED BY TRC ON DESKTOP UTILIZING DELINEATED FLAGS.
  4. 100-FT BUFFER ZONE IS GENERATED BY TRC FROM DELINEATED WETLAND RESOURCE AREAS.
  5. 200-FT RIVERFRONT AREA IS GENERATED BY TRC FROM DELINEATED PERENNIAL STREAM
  6. CONTOURS GENERATED FROM 1-METER USGS NED, 2015 (NORTH AMERICAN VERTICAL DATUM OF 1988), MASSGIS.

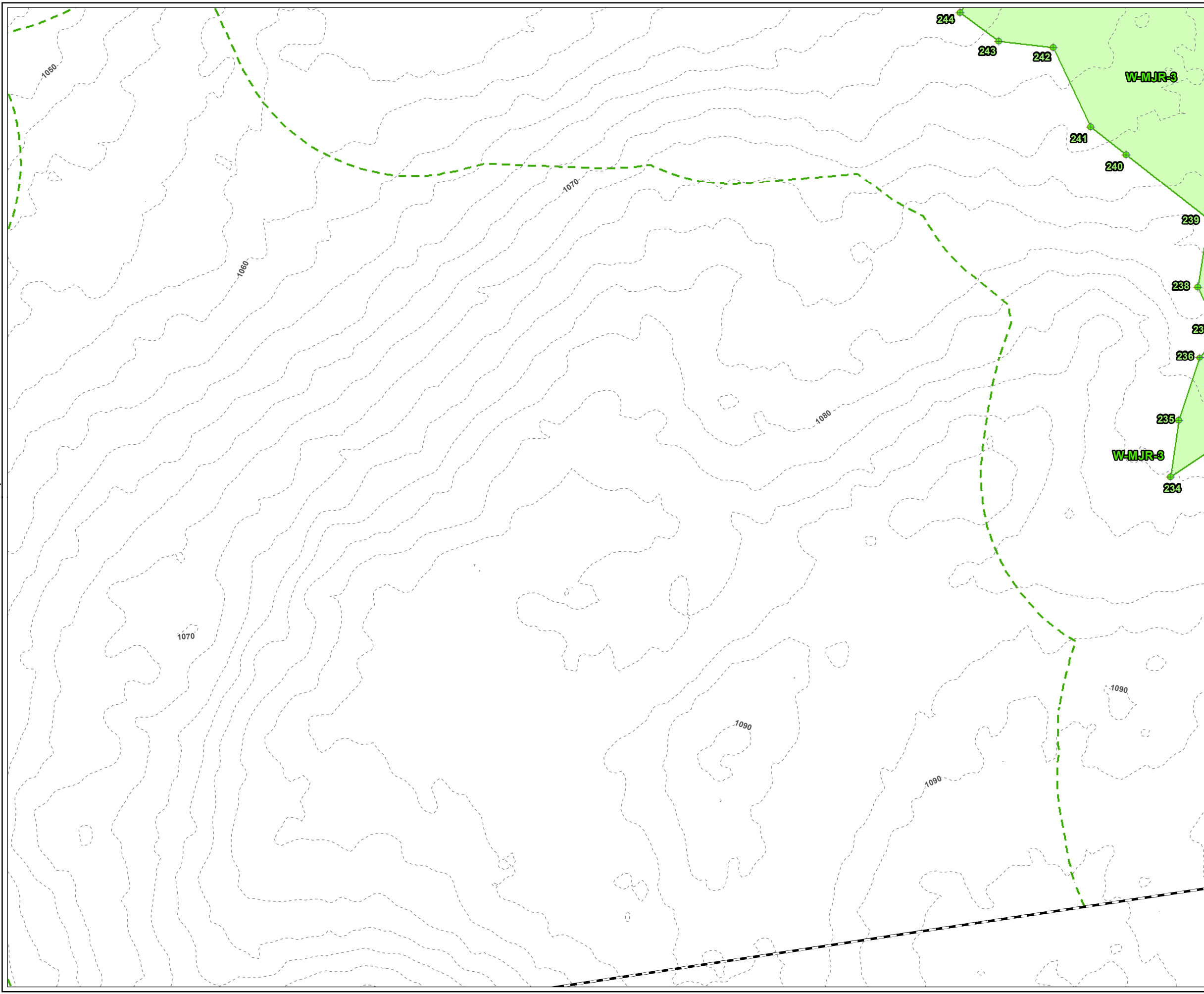
**PLANS NOT FOR CONSTRUCTION**

1 INCH = 220 FEET

Feet

<b>PROJECT:</b> BAKER STREET ROAD PROJECT FRANKLIN COUNTY, MASSACHUSETTS	
<b>TITLE:</b> DELINEATED RESOURCES MAP	
DRAWN BY: S. MOTURI	PROJ NO.: 336892
CHECKED BY: M. REEGAN	<b>FIGURE 1</b> Page 6 of 13
APPROVED BY: M. FIRSTENBERG	
DATE: JANUARY 2021	

TRC - GIS  
 Coordinate System: NAD 1983 StatePlane Massachusetts Mainland FIPS 2001 Feet (Foot US)  
 Map Rotation: 0  
 Plot Date: 1/28/2021 2:59:05 PM by SMOTURI --LAYOUT: ANSIB(11"x17")  
 Path: S:\1-PROJECTS\AMP\336892\_0000\_0004\_Baker\_SIBaker\_ANRAD\_Series\_11x17\_20210128.mxd



**LEGEND**

- PROJECT BOUNDARY
- WETLAND FLAG
- MASSDEP/SHUTESBURY BYLAW JURISDICTIONAL WETLAND
- DELINEATED WETLAND BOUNDARY LINE
- 100-FT WETLAND BUFFER
- 2-FT CONTOUR

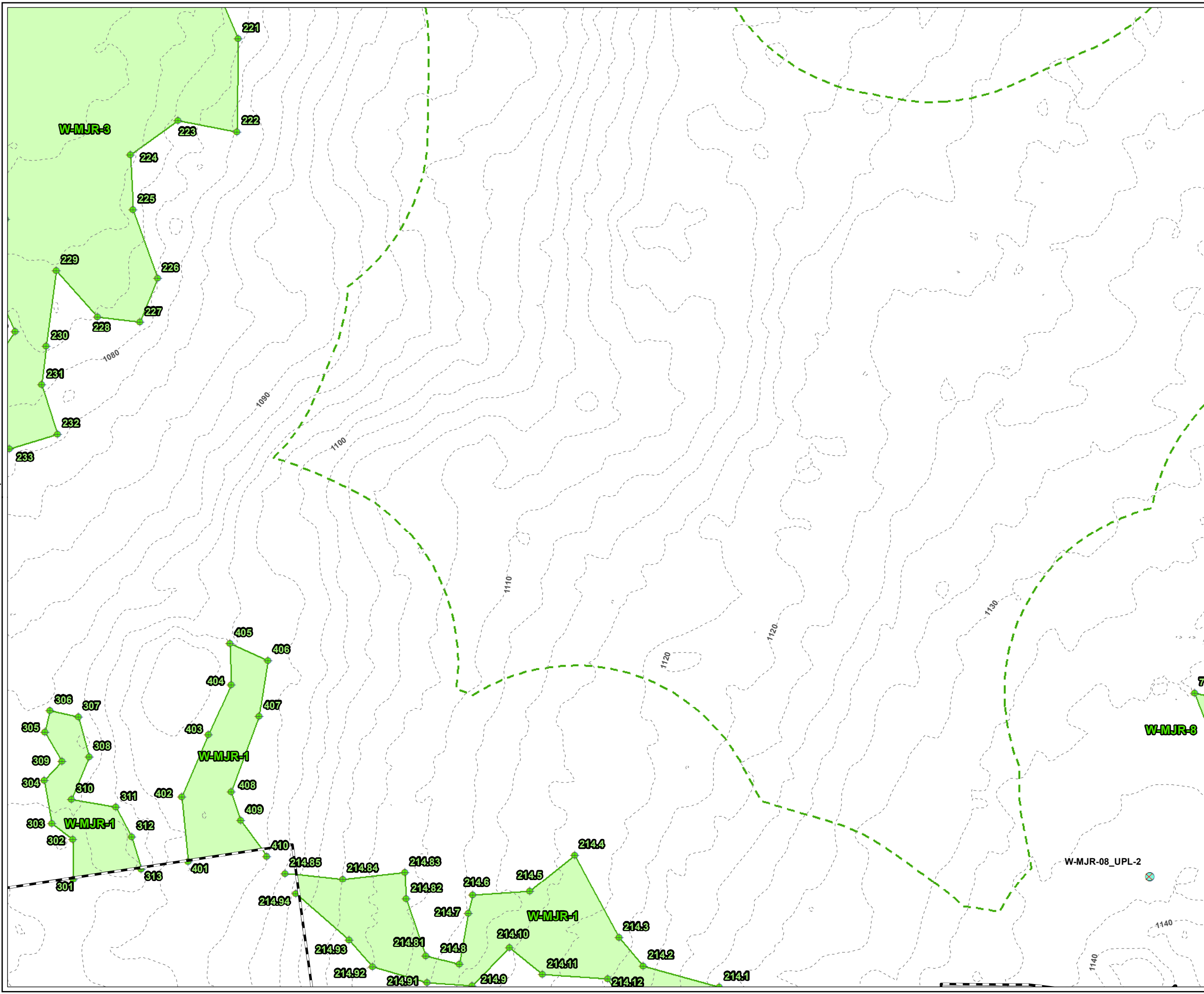
- NOTES**
1. PLAN REVISED ON 10/28/2020.
  2. PARCEL BOUNDARIES ARE ACCESSED FROM MASSGIS SHUTESBURY LEVEL3 PARCEL DATABASE, 2018.
  3. WETLAND AND STREAM FLAGS ARE DELINEATED BY TRC WETLAND SCIENTISTS ON OCTOBER 24, 2019 AND ON APRIL 1 AND MAY 7, 2020. FLAGS SURVEYED VIA GEODE WITH SUBMETER ACCURACY. DATA IS COLLECTED IN WGS 1984 HORIZONTAL DATUM. STREAM AND WETLAND BOUNDARIES ARE GENERATED BY TRC ON DESKTOP UTILIZING DELINEATED FLAGS.
  4. 100-FT BUFFER ZONE IS GENERATED BY TRC FROM DELINEATED WETLAND RESOURCE AREAS.
  5. 200-FT RIVERFRONT AREA IS GENERATED BY TRC FROM DELINEATED PERENNIAL STREAM
  6. CONTOURS GENERATED FROM 1-METER USGS NED, 2015 (NORTH AMERICAN VERTICAL DATUM OF 1988), MASSGIS.

**PLANS NOT FOR CONSTRUCTION**

1 INCH = 220 FEET

Feet

<b>PROJECT:</b> BAKER STREET ROAD PROJECT FRANKLIN COUNTY, MASSACHUSETTS	
<b>TITLE:</b> DELINEATED RESOURCES MAP	
DRAWN BY: S. MOTURI	PROJ NO.: 336892
CHECKED BY: M. REEGAN	<b>FIGURE 1</b> Page 7 of 13
APPROVED BY: M. FIRSTENBERG	
DATE: JANUARY 2021	



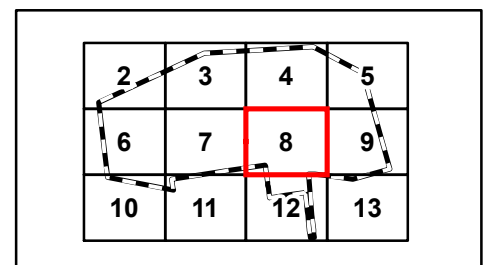
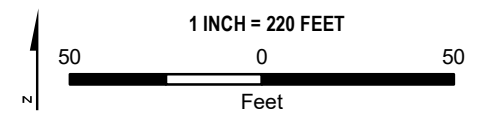
**LEGEND**

- PROJECT BOUNDARY
- WETLAND FLAG
- USACE PLOT
- MASSDEP/SHUTESBURY BYLAW JURISDICTIONAL WETLAND
- DELINEATED WETLAND BOUNDARY LINE
- 100-FT WETLAND BUFFER
- 2-FT CONTOUR

**NOTES**

1. PLAN REVISED ON 10/28/2020.
2. PARCEL BOUNDARIES ARE ACCESSED FROM MASSGIS SHUTESBURY LEVEL3 PARCEL DATABASE, 2018.
3. WETLAND AND STREAM FLAGS ARE DELINEATED BY TRC WETLAND SCIENTISTS ON OCTOBER 24, 2019 AND ON APRIL 1 AND MAY 7, 2020. FLAGS SURVEYED VIA GEODE WITH SUBMETER ACCURACY. DATA IS COLLECTED IN WGS 1984 HORIZONTAL DATUM. STREAM AND WETLAND BOUNDARIES ARE GENERATED BY TRC ON DESKTOP UTILIZING DELINEATED FLAGS.
4. 100-FT BUFFER ZONE IS GENERATED BY TRC FROM DELINEATED WETLAND RESOURCE AREAS.
5. 200-FT RIVERFRONT AREA IS GENERATED BY TRC FROM DELINEATED PERENNIAL STREAM
6. CONTOURS GENERATED FROM 1-METER USGS NED, 2015 (NORTH AMERICAN VERTICAL DATUM OF 1988), MASSGIS.

PLANS NOT FOR CONSTRUCTION



PROJECT: **BAKER STREET ROAD PROJECT  
FRANKLIN COUNTY, MASSACHUSETTS**

TITLE: **DELINEATED  
RESOURCES MAP**

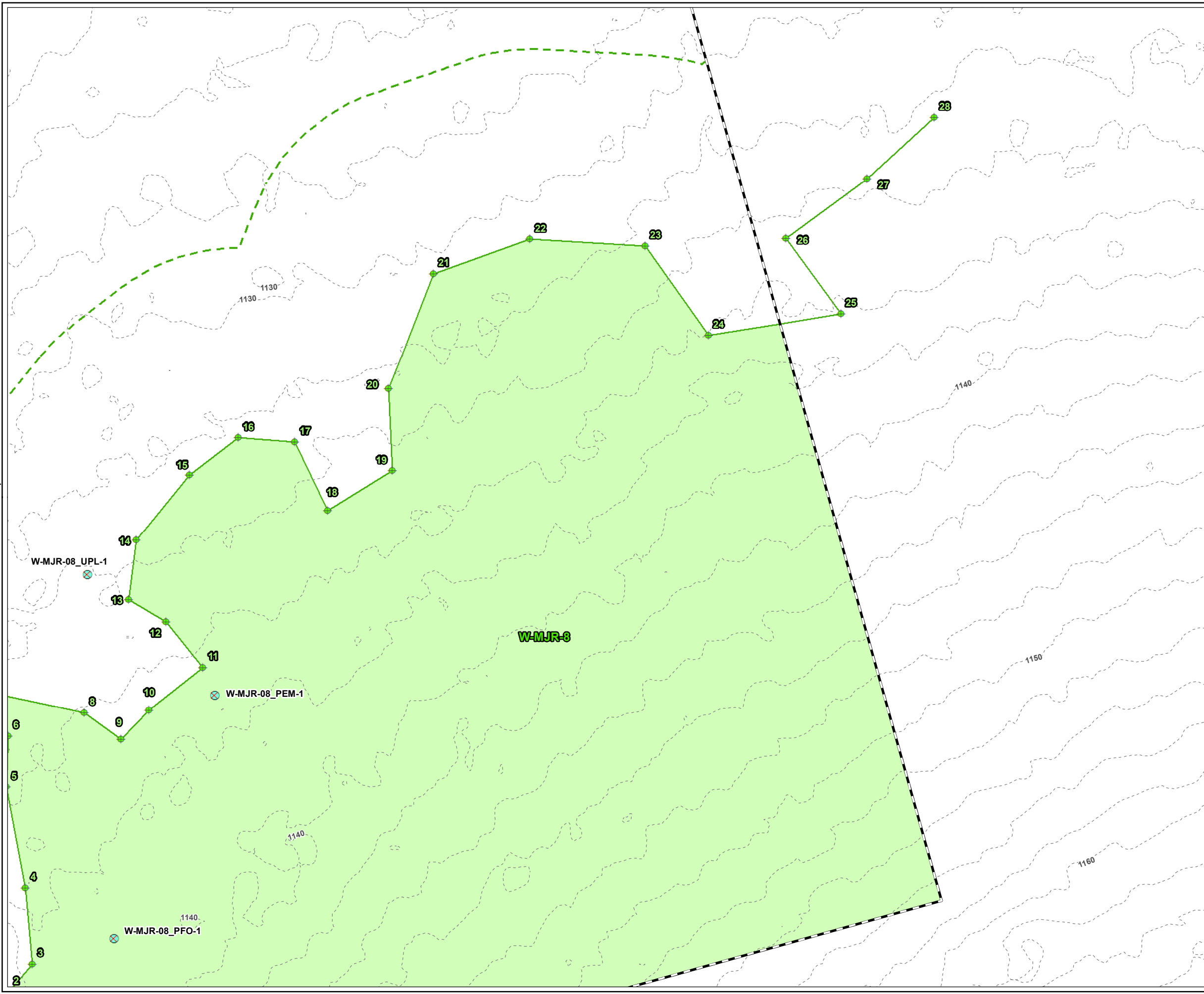
DRAWN BY: S. MOTURI	PROJ NO: 336892
CHECKED BY: M. REEGAN	<b>FIGURE 1</b> Page 8 of 13
APPROVED BY: M. FIRSTENBERG	
DATE: JANUARY 2021	

**TRC**

650 SUFFOLK STREET  
LOWELL, MA 01854

FILE NO: Baker\_ANRAD\_Series\_11x17\_20210128.mxd





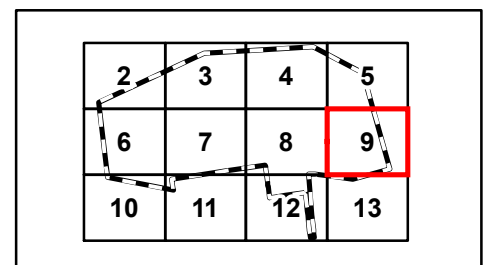
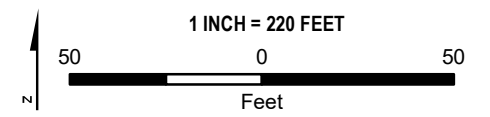
**LEGEND**

- PROJECT BOUNDARY
- WETLAND FLAG
- USACE PLOT
- MASSDEP/SHUTESBURY BYLAW JURISDICTIONAL WETLAND
- DELINEATED WETLAND BOUNDARY LINE
- 100-FT WETLAND BUFFER
- 2-FT CONTOUR

**NOTES**

1. PLAN REVISED ON 10/28/2020.
2. PARCEL BOUNDARIES ARE ACCESSED FROM MASSGIS SHUTESBURY LEVEL3 PARCEL DATABASE, 2018.
3. WETLAND AND STREAM FLAGS ARE DELINEATED BY TRC WETLAND SCIENTISTS ON OCTOBER 24, 2019 AND ON APRIL 1 AND MAY 7, 2020. FLAGS SURVEYED VIA GEODE WITH SUBMETER ACCURACY. DATA IS COLLECTED IN WGS 1984 HORIZONTAL DATUM. STREAM AND WETLAND BOUNDARIES ARE GENERATED BY TRC ON DESKTOP UTILIZING DELINEATED FLAGS.
4. 100-FT BUFFER ZONE IS GENERATED BY TRC FROM DELINEATED WETLAND RESOURCE AREAS.
5. 200-FT RIVERFRONT AREA IS GENERATED BY TRC FROM DELINEATED PERENNIAL STREAM
6. CONTOURS GENERATED FROM 1-METER USGS NED, 2015 (NORTH AMERICAN VERTICAL DATUM OF 1988), MASSGIS.

**PLANS NOT FOR CONSTRUCTION**



PROJECT: **BAKER STREET ROAD PROJECT  
FRANKLIN COUNTY, MASSACHUSETTS**

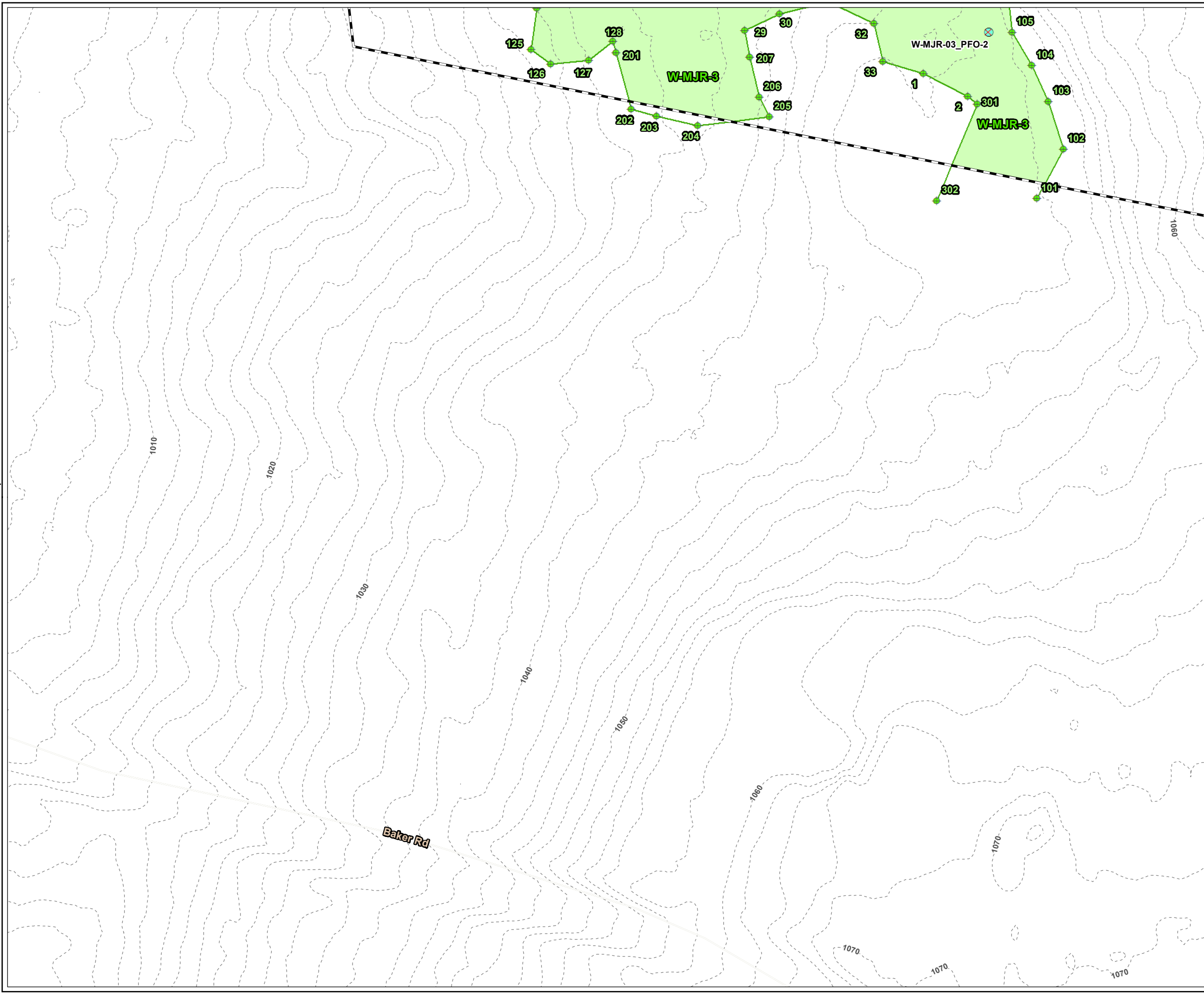
TITLE: **DELINEATED  
RESOURCES MAP**

DRAWN BY: S. MOTURI	PROJ NO.: 336892
CHECKED BY: M. REEGAN	<b>FIGURE 1</b> Page 9 of 13
APPROVED BY: M. FIRSTENBERG	
DATE: JANUARY 2021	

**TRC**

650 SUFFOLK STREET  
LOWELL, MA 01854

FILE NO.: Baker\_ANRAD\_Series\_11x17\_20210128.mxd



**LEGEND**

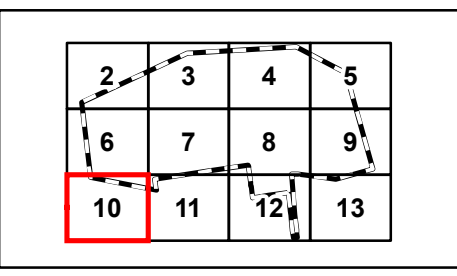
- PROJECT BOUNDARY
- WETLAND FLAG
- USACE PLOT
- MASSDEP/SHUTESBURY BYLAW JURISDICTIONAL WETLAND
- DELINEATED WETLAND BOUNDARY LINE
- 2-FT CONTOUR

- NOTES**
1. PLAN REVISED ON 10/28/2020.
  2. PARCEL BOUNDARIES ARE ACCESSED FROM MASSGIS SHUTESBURY LEVEL3 PARCEL DATABASE, 2018.
  3. WETLAND AND STREAM FLAGS ARE DELINEATED BY TRC WETLAND SCIENTISTS ON OCTOBER 24, 2019 AND ON APRIL 1 AND MAY 7, 2020. FLAGS SURVEYED VIA GEODE WITH SUBMETER ACCURACY. DATA IS COLLECTED IN WGS 1984 HORIZONTAL DATUM. STREAM AND WETLAND BOUNDARIES ARE GENERATED BY TRC ON DESKTOP UTILIZING DELINEATED FLAGS.
  4. 100-FT BUFFER ZONE IS GENERATED BY TRC FROM DELINEATED WETLAND RESOURCE AREAS.
  5. 200-FT RIVERFRONT AREA IS GENERATED BY TRC FROM DELINEATED PERENNIAL STREAM
  6. CONTOURS GENERATED FROM 1-METER USGS NED, 2015 (NORTH AMERICAN VERTICAL DATUM OF 1988), MASSGIS.

**PLANS NOT FOR CONSTRUCTION**

1 INCH = 220 FEET

Feet



PROJECT: **BAKER STREET ROAD PROJECT  
FRANKLIN COUNTY, MASSACHUSETTS**

TITLE: **DELINEATED  
RESOURCES MAP**



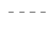
DRAWN BY: S. MOTURI	PROJ NO.: 336892
CHECKED BY: M. REEGAN	<b>FIGURE 1</b> Page 10 of 13
APPROVED BY: M. FIRSTENBERG	
DATE: JANUARY 2021	

650 SUFFOLK STREET  
LOWELL, MA 01854

FILE NO.: Baker\_ANRAD\_Series\_11x17\_20210128.mxd



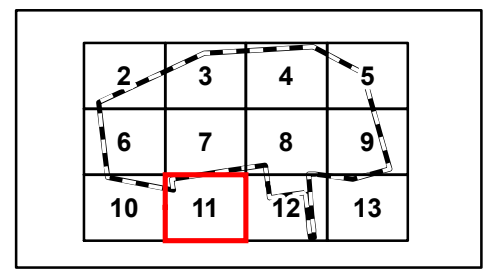
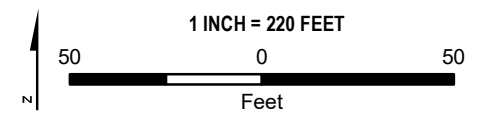
**LEGEND**

-  PROJECT BOUNDARY
-  100-FT WETLAND BUFFER
-  2-FT CONTOUR

**NOTES**

1. PLAN REVISED ON 10/28/2020.
2. PARCEL BOUNDARIES ARE ACCESSED FROM MASSGIS SHUTESBURY LEVEL3 PARCEL DATABASE, 2018.
3. WETLAND AND STREAM FLAGS ARE DELINEATED BY TRC WETLAND SCIENTISTS ON OCTOBER 24, 2019 AND ON APRIL 1 AND MAY 7, 2020. FLAGS SURVEYED VIA GEODE WITH SUBMETER ACCURACY. DATA IS COLLECTED IN WGS 1984 HORIZONTAL DATUM. STREAM AND WETLAND BOUNDARIES ARE GENERATED BY TRC ON DESKTOP UTILIZING DELINEATED FLAGS.
4. 100-FT BUFFER ZONE IS GENERATED BY TRC FROM DELINEATED WETLAND RESOURCE AREAS.
5. 200-FT RIVERFRONT AREA IS GENERATED BY TRC FROM DELINEATED PERENNIAL STREAM
6. CONTOURS GENERATED FROM 1-METER USGS NED, 2015 (NORTH AMERICAN VERTICAL DATUM OF 1988), MASSGIS.


**PLANS NOT FOR CONSTRUCTION**



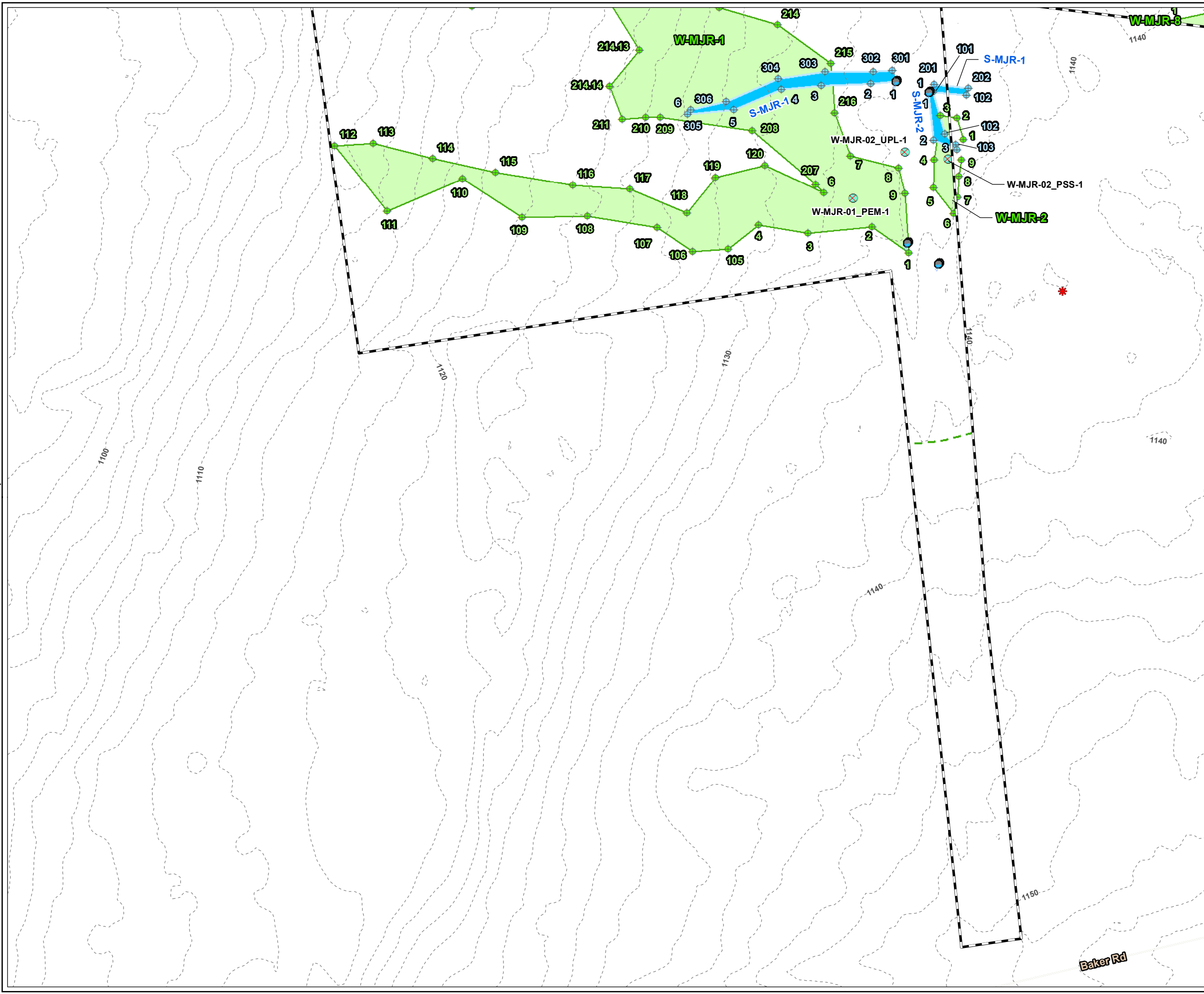
PROJECT: **BAKER STREET ROAD PROJECT  
FRANKLIN COUNTY, MASSACHUSETTS**

TITLE: **DELINEATED  
RESOURCES MAP**

DRAWN BY: S. MOTURI	PROJ NO.: 336892
CHECKED BY: M. REEGAN	<b>FIGURE 1</b> Page 11 of 13
APPROVED BY: M. FIRSTENBERG	
DATE: JANUARY 2021	

 650 SUFFOLK STREET  
LOWELL, MA 01854

FILE NO.: Baker\_ANRAD\_Series\_11x17\_20210128.mxd



**LEGEND**

- PROJECT BOUNDARY
- NHESP POTENTIAL VERNAL POOL
- CULVERT
- WETLAND FLAG
- STREAM FLAG
- USACE PLOT
- DELINEATED INTERMITTENT STREAM BANK
- DELINEATED INTERMITTENT STREAM AREA
- MASSDEP/SHUTESBURY BYLAW JURISDICTIONAL WETLAND
- DELINEATED WETLAND BOUNDARY LINE
- 100-FT WETLAND BUFFER
- 2-FT CONTOUR

- NOTES**
1. PLAN REVISED ON 10/28/2020.
  2. PARCEL BOUNDARIES ARE ACCESSED FROM MASSGIS SHUTESBURY LEVEL3 PARCEL DATABASE, 2018.
  3. WETLAND AND STREAM FLAGS ARE DELINEATED BY TRC WETLAND SCIENTISTS ON OCTOBER 24, 2019 AND ON APRIL 1 AND MAY 7, 2020. FLAGS SURVEYED VIA GEODE WITH SUBMETER ACCURACY. DATA IS COLLECTED IN WGS 1984 HORIZONTAL DATUM. STREAM AND WETLAND BOUNDARIES ARE GENERATED BY TRC ON DESKTOP UTILIZING DELINEATED FLAGS.
  4. 100-FT BUFFER ZONE IS GENERATED BY TRC FROM DELINEATED WETLAND RESOURCE AREAS.
  5. 200-FT RIVERFRONT AREA IS GENERATED BY TRC FROM DELINEATED PERENNIAL STREAM
  6. CONTOURS GENERATED FROM 1-METER USGS NED, 2015 (NORTH AMERICAN VERTICAL DATUM OF 1988), MASSGIS.

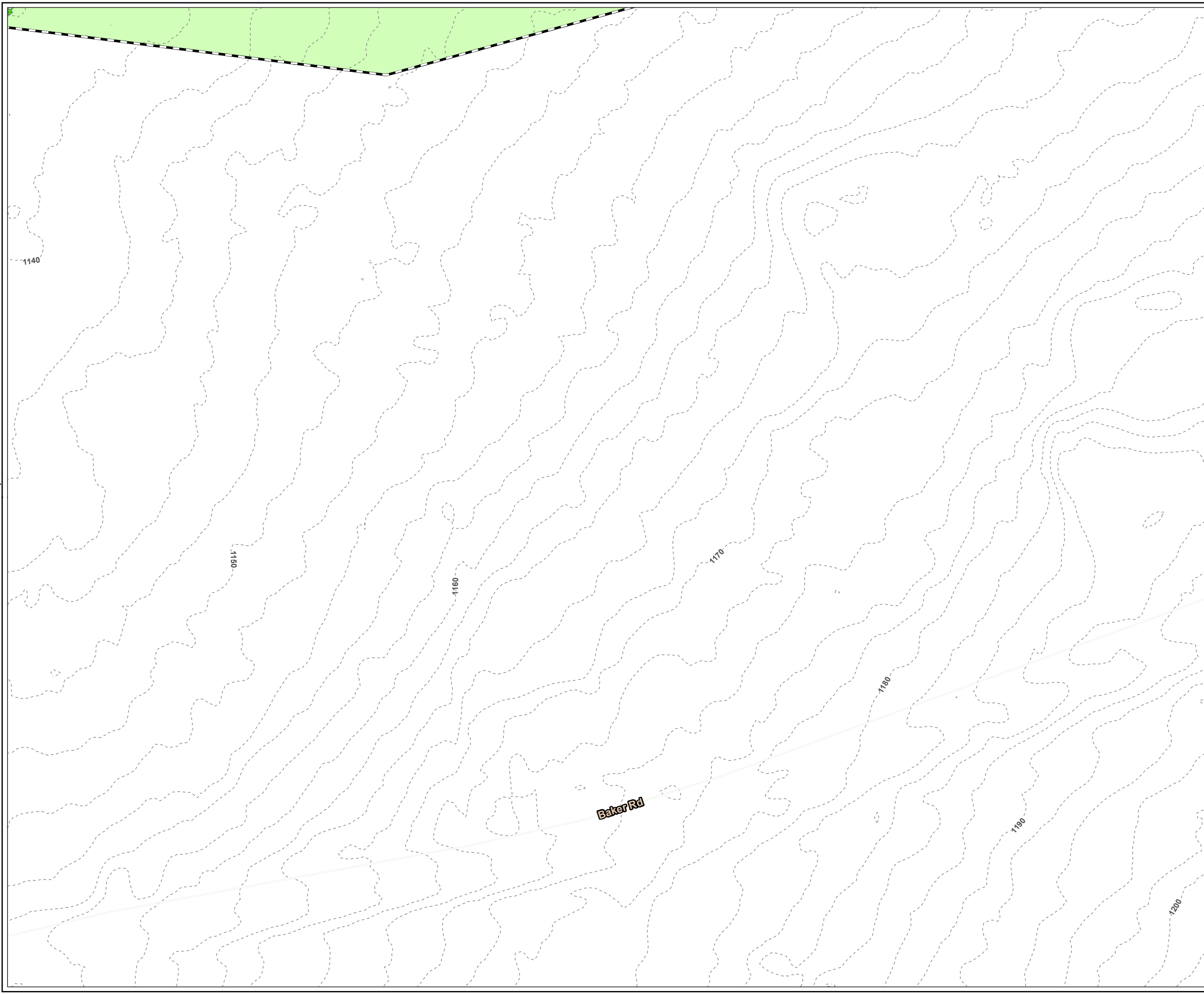
**PLANS NOT FOR CONSTRUCTION**

1 INCH = 220 FEET

Feet

<b>PROJECT:</b> BAKER STREET ROAD PROJECT FRANKLIN COUNTY, MASSACHUSETTS	
<b>TITLE:</b> DELINEATED RESOURCES MAP	
DRAWN BY: S. MOTURI	PROJ NO.: 336892
CHECKED BY: M. REEGAN	<b>FIGURE 1</b> Page 12 of 13
APPROVED BY: M. FIRSTENBERG	
DATE: JANUARY 2021	





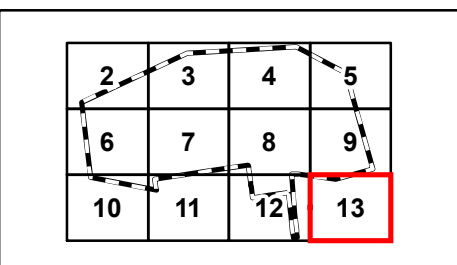
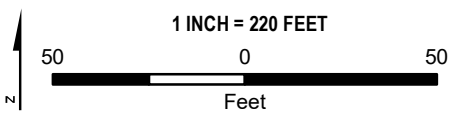
**LEGEND**

- PROJECT BOUNDARY
- WETLAND FLAG
- MASSDEP/SHUTESBURY BYLAW JURISDICTIONAL WETLAND
- DELINEATED WETLAND BOUNDARY LINE
- 2-FT CONTOUR

**NOTES**

1. PLAN REVISED ON 10/28/2020.
2. PARCEL BOUNDARIES ARE ACCESSED FROM MASSGIS SHUTESBURY LEVEL3 PARCEL DATABASE, 2018.
3. WETLAND AND STREAM FLAGS ARE DELINEATED BY TRC WETLAND SCIENTISTS ON OCTOBER 24, 2019 AND ON APRIL 1 AND MAY 7, 2020. FLAGS SURVEYED VIA GEODE WITH SUBMETER ACCURACY. DATA IS COLLECTED IN WGS 1984 HORIZONTAL DATUM. STREAM AND WETLAND BOUNDARIES ARE GENERATED BY TRC ON DESKTOP UTILIZING DELINEATED FLAGS.
4. 100-FT BUFFER ZONE IS GENERATED BY TRC FROM DELINEATED WETLAND RESOURCE AREAS.
5. 200-FT RIVERFRONT AREA IS GENERATED BY TRC FROM DELINEATED PERENNIAL STREAM
6. CONTOURS GENERATED FROM 1-METER USGS NED, 2015 (NORTH AMERICAN VERTICAL DATUM OF 1988), MASSGIS.

**PLANS NOT FOR CONSTRUCTION**



PROJECT: **BAKER STREET ROAD PROJECT  
FRANKLIN COUNTY, MASSACHUSETTS**

TITLE: **DELINEATED  
RESOURCES MAP**

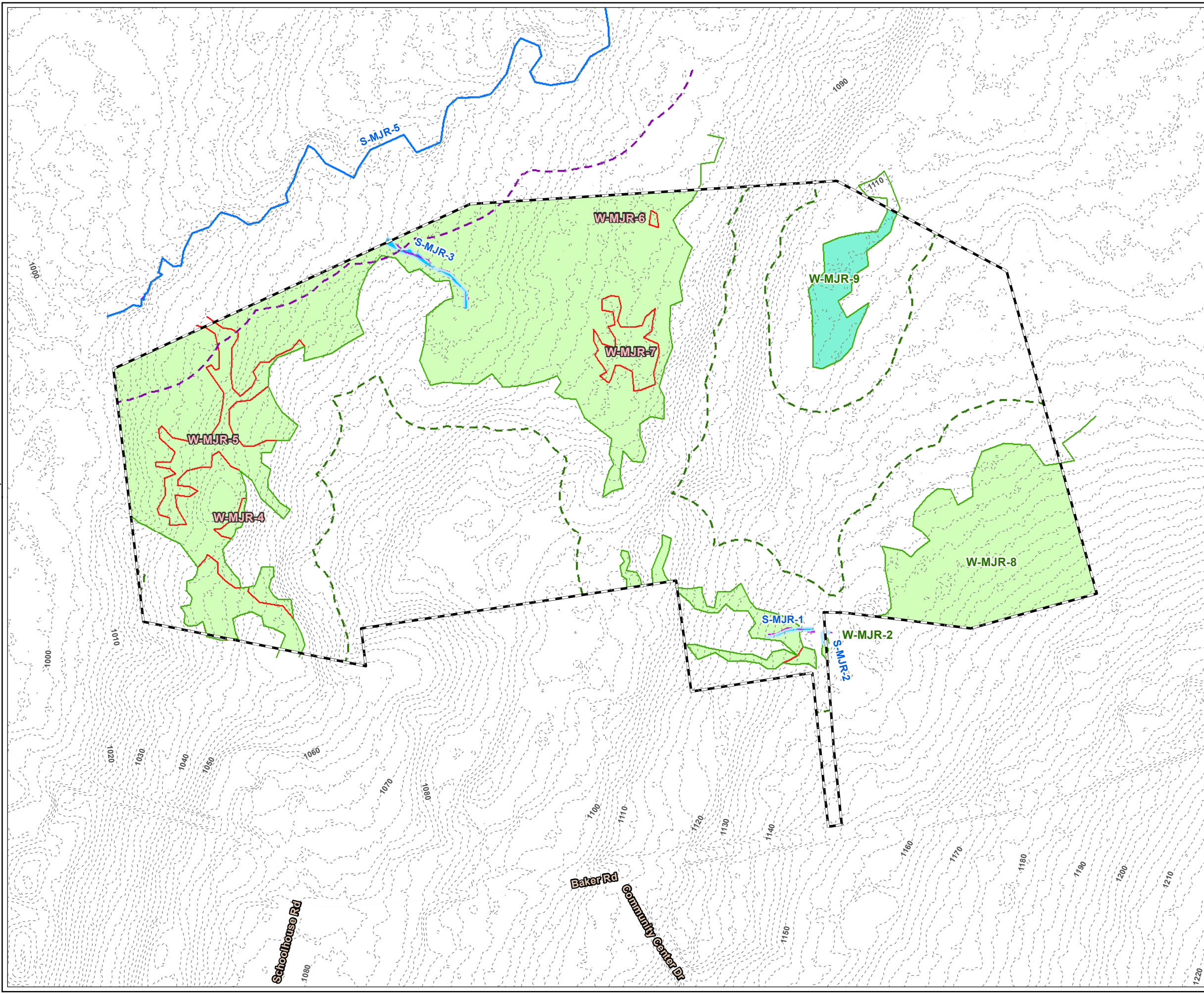
DRAWN BY: S. MOTURI	PROJ NO.: 336892
CHECKED BY: M. REEGAN	<b>FIGURE 1</b> Page 13 of 13
APPROVED BY: M. FIRSTENBERG	
DATE: JANUARY 2021	

**TRC**

650 SUFFOLK STREET  
LOWELL, MA 01854

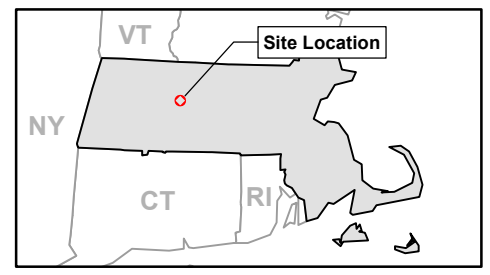
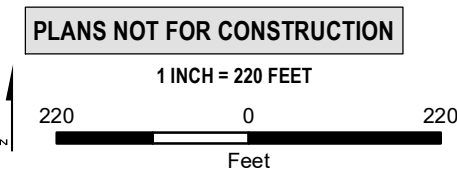
FILE NO.: Baker\_ANRAD\_Series\_11x17\_20210128.mxd

**ATTACHMENT B**  
**Figure 2: Delineated Resources Map Changes**  
**(January 2021)**



- LEGEND**
- PROJECT BOUNDARY
  - OLD DELINEATED STREAM LINE
  - DELINEATED INTERMITTENT STREAM BANK
  - DELINEATED PERENNIAL STREAM BANK AND MAHW
  - DELINEATED INTERMITTENT STREAM
  - OLD DELINEATED WETLAND BOUNDARY LINE
  - DELINEATED WETLAND BOUNDARY LINE
  - MASSDEP/SHUTESBURY BYLAW JURISDICTIONAL WETLAND
  - SHUTESBURY BYLAW JURISDICTIONAL WETLAND
  - 100-FT WETLAND BUFFER
  - 200-FT RIVERFRONT AREA
  - 2-FT CONTOUR
  - # ID NEW DELINEATED STREAM ID
  - # ID OLD DELINEATED WETLAND ID
  - # ID NEW DELINEATED WETLAND ID

- NOTES**
1. PLAN REVISED ON 01/28/2021.
  2. PARCEL BOUNDARIES ARE ACCESSED FROM MASSGIS SHUTESBURY LEVEL3 PARCEL DATABASE, 2018.
  3. WETLAND AND STREAM FLAGS ARE DELINEATED BY TRC WETLAND SCIENTISTS ON OCTOBER 24, 2019 AND ON APRIL 1 AND MAY 7, 2020. FLAGS SURVEYED VIA GEODE WITH SUBMETER ACCURACY. DATA IS COLLECTED IN WGS 1984 HORIZONTAL DATUM. STREAM AND WETLAND BOUNDARIES ARE GENERATED BY TRC ON DESKTOP UTILIZING DELINEATED FLAGS.
  4. 100-FT BUFFER ZONE IS GENERATED BY TRC FROM DELINEATED WETLAND RESOURCE AREAS.
  5. 200-FT RIVERFRONT AREA IS GENERATED BY TRC FROM DELINEATED PERENNIAL STREAM
  6. CONTOURS GENERATED FROM 1-METER USGS NED, 2015 (NORTH AMERICAN VERTICAL DATUM OF 1988), MASSGIS.



PROJECT:		<b>BAKER STREET ROAD PROJECT FRANKLIN COUNTY, MASSACHUSETTS</b>	
TITLE:		<b>DELINEATED RESOURCES MAP CHANGES</b>	
DRAWN BY:	S. MOTURI	PROJ NO.:	336892
CHECKED BY:	M. LENNON	<b>FIGURE 1</b>	
APPROVED BY:	M. FIRSTENBERG		
DATE:	JANUARY 2021		

**ATTACHMENT C**  
**Updated WPA Form 4A Page 1**





**Massachusetts Department of Environmental Protection**  
 Bureau of Resource Protection - Wetlands  
**WPA Form 4A – Abbreviated Notice of**  
**Resource Area Delineation**  
 Massachusetts Wetlands Protection Act M.G.L. c. 131, §40

Provided by MassDEP:

MassDEP File Number

Document Transaction Number

Shutesbury  
City/Town

**A. General Information**

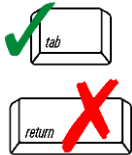
1. Project Location (**Note:** electronic filers will click on button for GIS locator):

West Pelham Road Shutesbury 01072  
 a. Street Address b. City/Town c. Zip Code

Latitude and Longitude: 42.42365 -72.42874  
 d. Latitude e. Longitude

Map ZQ Lot 6  
 f. Assessors Map/Plat Number g. Parcel /Lot Number

**Important:** When filling out forms on the computer, use only the tab key to move your cursor - do not use the return key.



2. Applicant:

a. First Name W.D. Cowsls, Inc. b. Last Name \_\_\_\_\_  
 c. Organization P.O. Box 9677  
 d. Mailing Address North Amherst MA 01059  
 e. City/Town f. State g. Zip Code

413-539-1741 \_\_\_\_\_  
 h. Phone Number i. Fax Number

\_\_\_\_\_ j. Email Address

3. Property owner (if different from applicant):

Check if more than one owner (attach additional sheet with names and contact information)

a. First Name \_\_\_\_\_ b. Last Name \_\_\_\_\_  
 c. Organization \_\_\_\_\_  
 d. Mailing Address \_\_\_\_\_  
 e. City/Town \_\_\_\_\_ f. State \_\_\_\_\_ g. Zip Code \_\_\_\_\_  
 h. Phone Number \_\_\_\_\_ i. Fax Number \_\_\_\_\_  
 j. Email Address \_\_\_\_\_

**Note:** Before completing this form consult your local Conservation Commission regarding any municipal bylaw or ordinance.

4. Representative (if any):

Jeff Brandt  
 a. Contact Person First Name b. Contact Person Last Name

TRC  
 c. Organization 650 Suffolk Street  
 d. Mailing Address Lowell MA 01854  
 e. City/Town f. State g. Zip Code

978-656-3662 \_\_\_\_\_  
 h. Phone Number i. Fax Number JBrandt@TRCcompanies.com  
 j. Email Address

Fees will be calculated for online users.

5. Total WPA Fee Paid (from attached ANRAD Wetland Fee Transmittal Form):

\$2,000.00 \$987.50 \$1,012.50  
 a. Total Fee Paid b. State Fee Paid c. City/Town Fee Paid