

Shutesbury Public Library

66 Leverett Road, Shutesbury, MA 01072

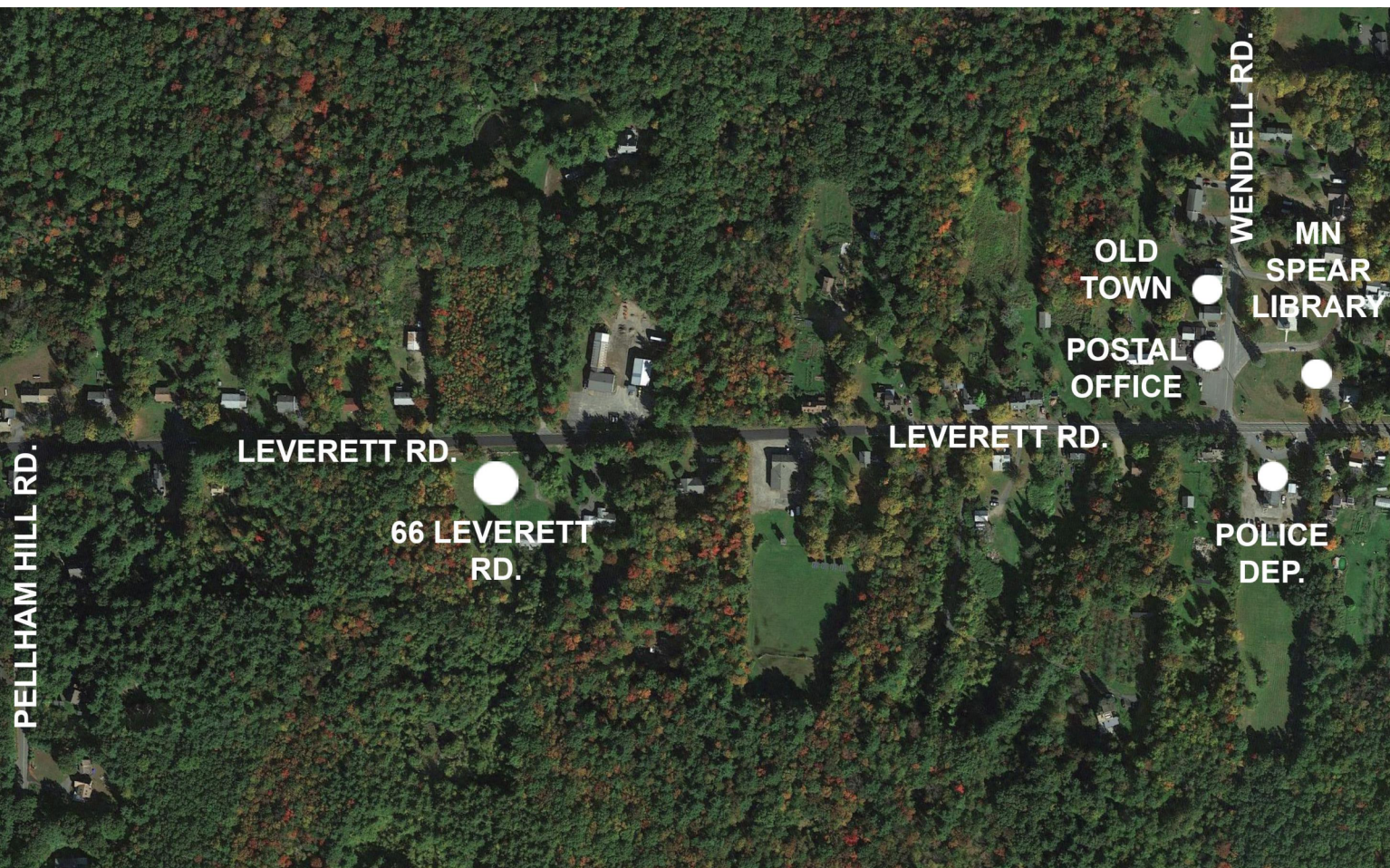


OWNER

TOWN OF SHUTESBURY
1 COOLEYVILLE RD.
SHUTESBURY MA 01072-0276
T: 413.259.1214

OWNER'S PROJECT MANAGER

CONSTRUCTION MONITORING SERVICES
270 MAIN STREET
MARLBOROUGH, MA 01752
T: 508.786.0600



100% DESIGN DEVELOPMENT CIVIL + LANDSCAPE DRAWINGS
DECEMBER 11, 2023



UDENS ELLO ARCHITECTURE, LLC
46 WALTHAM STREET, SUITE 4A
BOSTON, MA 02118
T. 617.422.0980

CIVIL ENGINEER

FUSS & O'NEILL, INC.
1550 MAIN STREET, SUITE 400
SPRINGFIELD, MA 01103
T: 413.452.0445

LANDSCAPE ARCHITECT

STIMPSON
288 NORFOLK ST.
CAMBRIDGE, MA 02139
T: 617.876.8960

STRUCTURAL ENGINEER

LEMESSURIER
1380 SOLDIERS FIELD RD.
BOSTON, AM 02135
T: 617.868.1200

MEP/FP ENGINEER

BALA CONSULTING ENGINEERS
52 TEMPLE PLACE
BOSTON, MA 02111
T: 617.357.6060

CODE/LIFE SAFETY

CODE RED CONSULTANTS
154 TURNPIKE RD., SUITE 200
SOUTHBOROUGH, MA 01772
T: 617.500.7633

SPECIFICATIONS

KALIN ASSOCIATES
1121 WASHINGTON ST.
NEWTON, MA 02465
T: 617.964.5477

LIGHTING

LAM PARTNERS, INC.
84 Sherman Street
Cambridge, MA 02140
T: 617.354.4502

ACOUSTICS

ACENTECH
33 MOULTON ST
CAMBRIDGE, MA 02138
T: 617.499.8000

SOLAR DESIGN

SOLAR DESIGN ASSOCIATES
280 Ayer Rd,
HARVARD, MA 01451
T: 978.456.6855

CODE CONSULTANTS

CODE RED CONSULTANTS
154 TURNPIKE ROAD, SUIT 200
SOUTHBOROUGH MA 01772
T. 617.500.7633

GENERAL NOTES

1. ALL WORK PERFORMED SHALL COMPLY WITH THE CONTRACT DOCUMENTS, DRAWINGS AND SPECIFICATIONS, INCLUDING THESE GENERAL NOTES. THE CONTRACTOR SHALL COORDINATE THE INTENT OF THE GENERAL NOTES WITH ALL TRADES.
2. SPECIFICATIONS, BOUND SEPARATELY, ARE PART OF THE CONTRACT DOCUMENTS.
3. THE ORGANIZATION OF THE DRAWINGS AND SPECIFICATIONS SHALL NOT CONTROL THE CONTRACTOR IN DIVING THE WORK AMONG SUBCONTRACTORS OR ESTABLISHING THE EXTENT OF THE WORK TO BE PERFORMED BY ANY TRADE UNLESS SPECIFICALLY REQUIRED.
4. THE MATERIAL AND WORKMANSHIP SHALL CONFORM TO THE DRAWINGS AND SPECIFICATIONS. IF CONFLICT IS FOUND BETWEEN DRAWINGS, GENERAL NOTES, AND SPECIFICATIONS, CONSULT THE ARCHITECT FOR CLARIFICATION BEFORE PROCEEDING WITH THE WORK.
5. THE STRUCTURAL, MECHANICAL, ELECTRICAL, PLUMBING AND FIRE PROTECTION DRAWINGS ARE SUPPLEMENTARY TO THE ARCHITECTURAL DRAWINGS. IT SHALL BE THE RESPONSIBILITY OF THE CONTRACTOR TO CHECK WITH THE ARCHITECTURAL DRAWINGS BEFORE THE INSTALLATION OF SUCH WORK. SHOULD THERE BE A DISCREPANCY BETWEEN ARCHITECTURAL DRAWINGS AND THE CONSULTING ENGINEERS' DRAWINGS THAT WOULD CAUSE AN AWKWARD INSTALLATION, IT SHALL BE BROUGHT TO THE ARCHITECT'S ATTENTION FOR CLARIFICATION BEFORE INSTALLATION OF SAID WORK. ANY WORK INSTALLED IN CONFLICT WITH THE ARCHITECTURAL DRAWINGS SHALL BE CORRECTED BY THE CONTRACTOR AT NO ADDITIONAL COST.
6. DO NOT SCALE DRAWINGS. DIMENSIONS SHALL TAKE PRECEDENCE OVER SCALES SHOWN ON DRAWINGS. THE GENERAL CONTRACTOR SHALL VERIFY ALL DIMENSIONS, GRADES, AND CONDITIONS AT THE SITE PRIOR TO COMMENCING WITH THE WORK, AND REPORT ANY DISCREPANCIES TO THE ARCHITECT IN WRITING.
7. ALL SYMBOLS AND ABBREVIATIONS USED ON THE DRAWINGS ARE CONSIDERED TO BE CONSTRUCTION STANDARDS. IF THE CONTRACTOR HAS QUESTIONS REGARDING THE SAME, OR THEIR EXACT MEANING, THE ARCHITECT SHALL BE NOTIFIED FOR CLARIFICATION.
8. WHERE A TYPICAL CONDITION IS DETAILED, IT SHALL BE UNDERSTOOD THAT ALL LIKE OR SIMILAR CONDITIONS ARE THE SAME UNLESS SPECIFICALLY NOTED OR DETAILED OTHERWISE.
9. DIMENSIONS ARE TYPICALLY TO FACE OF FINISH UNLESS OTHERWISE NOTED.
10. FLOOR ELEVATIONS ARE TYPICALLY TO TOP OF FINISHED FLOOR UNLESS OTHERWISE NOTED.
11. CEILING HEIGHT DIMENSIONS ARE TO FINISHED SURFACES.
12. ALL CONSTRUCTION SHALL CONFORM TO THE REQUIREMENTS OF THE MASSACHUETTS STATE BUILDING CODE 780 CMR 9TH EDITION.
13. THE CONTRACTOR SHALL PROVIDE AND INSTALL ALL STIFFENERS, BRACINGS, BLOCKING, BACK-UP PLATES, AND SUPPORTING BRACKETS REQUIRED FOR THE INSTALLATION OF ALL CASEWORK, TOILET ROOM, ACCESSORIES, HAND RAILS, CHAIR RAILS, FIXTURES, AND PARTITIONS, AND WALL MOUNTED OR SUSPENDE MECHANICAL, ELECTRICAL, OR MISCELLANEOUS EQUIPMENT AND FURNISHINGS.
14. MECHANICAL SUPPLY AND RETURN AIR SHAFTS SHALL BE ALRIGHT AND SEALED.
15. THE CONTRACTOR SHALL REVIEW THE LOCATION AND THE MOUNTING HEIGHTS OF THE TOILET ROOM ACCESSORIES WITH THE ARCHITECT AND BUILDING INSPECTOR PRIOR TO INSTALLATION TO ASSURE CORRECT POSITIONING IN ACCORDANCE WITH THE AMERICANS WITH DISABILITIES ACT.
16. DUCT PENETRATIONS OF FIRE RATED WALLS, FLOORS, OR ROOF SHALL HAVE FIRE DAMPERS PER NFPA. DAMPERS MUST BE LOCATED ON DRAWINGS.
17. PENETRATIONS IN WALLS, FLOORS, OR ROOF REQUIRING PROTECTED OPENINGS SHALL BE FIRE STOPPED IN ACCORDANCE WITH NFPA.
18. AIR WATER RESISTIVE BARRIER TO BE SEALED AIRTIGHT AND WATERTIGHT AT ALL PENETRATIONS.

SYMBOLS LEGEND

01

A

COLUMN LINE DESIGNATION

MATCH LINE

WORK POINT/DATUM POINT

REVISION
Revision Number

1

A-1.0

SECTION DESIGNATION
Section Identification
Sheet where Section is drawn

1

A101

WALL SECTION DESIGNATION
Section Identification
Sheet where Section is drawn

1

A101

DETAIL DESIGNATION
Detail Identification
Sheet where detail is drawn

ROOM NAME

123

ROOM DESIGNATION
Room Number

101

DOOR SYMBOL
Door Number

C1

WINDOW TYPE/LOUVER TYPE

6

WINDOW TYPE/LOUVER TYPE

1

A101

2

3

INTERIOR ELEVATION DESIGNATION
Elevation Identification
Sheet where elevation is drawn

1

PARTITION DESIGNATION

7'-0"

FACE DIMENSIONS

7'-0"

CENTERLINE DIMENSIONS

PROPERTY LINE

78

NEW OR FINISHED CONTOURS

71

EXISTING CONTOURS

S

BACKER ROD & SEALANT

FINISH LEGEND

F-LIN

BASIS FOR DESIGN - NORA LVT

F-MAT

BASIS OF DESIGN - MATS INC. (GRATE GRID) DEPRESSED INTO SLAB

F-TILE

BASIS OF DESIGN - MOSA 'MAESTRICH'T' PORCELAIN TILE (PRICE ALTERNATES) ALT 1 - F-LIN NORA LVT

F-CPT

BASIS OF DESIGN - TARKETT POWERBOND CARPET

F-CONC

BASIS OF DESIGN - STEEL-TROWELED CONCRETE W/ SLIP RESISTANT SEALER

MATERIALS LEGEND

GL

ALUM CLAD WOOD WINDOWS (BASIS FO DESIGN: PELLA ARCHITECT SERIES). FIXED AND OPERABLE (TYP).

MTL1

24 GAUGE KYNAR COATED STEEL STANDING SEAM ROOF WITH MATCHING FASCIAS AND DRIP EDGES (METAL SALES, "MAGNA-LDC")

LV

METAL LOUVER VENT

SL

SLATE SHINGLE WITH FRACTURED EDGES AND 8" EXPOSURE (VERMONT STRUCTURAL SLATE (UNFADING GREEN)

WD2

WOOD TRIM BOARD (ALASKAN YELLOW CEDAR WITH BLEACHING STAIN)

CONC

CONCRETE-FACED INSULATION PANEL (T-CLEAR COPORATION WALLGUARD)

MTL2

24 GAUGE KYNAR COATED STEEL FLAT SEAM ROOF WITH MATCHING FASCIAS AND DRIP EDGES (GARLAND INDUSTRIES) MATCH ALUMINUM FLASHING AT WINDOW)

PV

PHOTOVOLTAIC ARRAY (ON ROOF FLUSH MOUNTED RAIL SYSTEM). REFER TO SHEETS PC1-10"

WD1

BASIS FOR DESIGN: ACCOYA - "PALLAWAN 2C" - ACCELERATED WEATHERING (CHEMICALLY MODIFIED WOOD) (PRICING ALTERNATIVE: AD ALT 1: (PRICE ALTERNATES) ALT 1 - 1X6 IPE WOOD SIDING WITH FINISHING OIL

TPO

TPO ROOFING (CARLISLE SYNTEC INCORPORATED, "FLEECEBACK TPO")

CODE REQUIREMENTS

- APPLICABLE CODES:
1. 780 CMR - MASSACHUSETTS STATE BUILDING CODE 10TH EDITION, WHICH IS AN AMENDED VERSION OF THE 2021 INTERNATIONAL BUILDING CODE (IBC).
2. 527 CMR - MASSACHUSETTS COMPREHENSIVE FIRE SAFETY CODE, WHICH IS AN AMENDED VERSION OF THE 2021 EDITION OF NFPA 1, FIRE CODE.
3. 521 CMR - ARCHITECTURAL ACCESS BOARD (AAB) RULES AND REGULATIONS 2010 ADA STANDARDS FOR ACCESSIBLE DESIGN
4. 527 CMR 12.00 - MASSACHUSETTS ELECTRICAL CODE, WHICH IS AN AMENDED VERSION OF THE 2023 EDITION OF NFPA 70, NATIONAL ELECTRICAL CODE
5. 2015 INTERNATIONAL MECHANICAL CODE (IMC) AS AMENDED BY 780 CMR 28.00.
6. 248 CMR 10.00 – UNIFORM STATE PLUMBING CODE
7. 225 CMR 23.00 – COMMERCIAL STRETCH CODE, WHICH IS AN AMENDED VERSION OF THE 2021 INTERNATIONAL ENERGY CONSERVATION CODE (IECC) PLUS STRETCH CODE AMENDMENTS
8. NATIONAL FIRE PROTECTION ASSOCIATION (NFPA) STANDARDS, AS REFERENCED BY THE ABOVE CODES

ABBREVIATIONS

ABV

ABOVE

@

AT

AFF

ABOVE FINISH FLOOR

ACOUS

ACOUSTICAL

ALUM

ALUMINUM

ADA

AMERICANS WITH DISABILITIES

BCT

BASEMENT

BSMT

BLOCKING

BLKG

BOTTOM OF

B/O

BOTTOM OF

BOW

BOTTOM OF WALL

BOWF

BOTTOM OF WINDOW FRAME

C

CERAMIC

CER

CHANNEL

CH

CONTROL JOINT

CJ

CENTER LINE

CL

CLOSET

CLOS

CLEAR

CLR

CONCRETE MASONRY UNIT

CMU

CENTER OF

CO

COLUMN

COL

CONCRETE

CONC

CONTINUOUS

CONT

CERAMIC TILE

CT

DRAWING

D

DOWN

DWG

EXTERIOR GRADE

DN

ELEVATION

E

ELECTRICAL

EG

EMERGENCY

EL

EQUAL

ELEC

EXPANSION

EMER

EXTERIOR

EQ

FLOOR DRAIN

EXP

FIRE EXTINGUISHER

EXT

FINISH FLOOR

F

FINISH

FD

FLOOR

FE

FACE OF STUD

FF

FOUNDATION

FIN

FIRE STAND PIPE

FL

FEET

FOS

GALVANIZED

FOUND

GRADE

FT

GROUND FLOOR

G

GYPSUM WALL BOARD

GALV

GYPSUM

GD

HANDICAPPED

GR FL

HEADER

GWB

HARDWOOD

GYP

HORIZONTAL

H

HEIGHT

HC

INSULATION

HD

JANITOR

HDWD

JOINT

HOR

K

HT

KITCHEN

I

LCC

INSUL

LEAD COATED COPPER

J

LOCATION

JT

JOINT

K

M

KL

MACH

LOC

MAS

LCC

MFR

LOC

MECH

M

MIN

MACH

MISC

MAS

MO

MFR

MTNG

MECH

MTL

MIN

N

MISC

NIC

MO

NTS

MTNG

O

MTL

OC

N

OH

NIC

ON CENTER

NTS

OPPOSITE HAND

O

OPENING

OC

OPP

OH

OPPOSITE

ON CENTER

P

OPPOSITE HAND

PLAM

OPENING

PLAS

OPPOSITE

PL

P

PLYWD

PLAM

PLYWD

PLAS

PTD

PL

PAINTED

PLYWD

R

PTD

REQ'D

PAINTED

RD

R

RL

REQ'D

RM

RD

RO

RL

RO

RM

SC

RO

SER

SC

SHT

SER

SHM

SHT

SPEC

SHM

SS

SPEC

STOR

SS

STL

STOR

STRUC

STL

SQ

STRUC

T

SQ

TEL

T

TO

TEL

TOC

TO

TODF

TOC

TOS

TODF

TOW

TOS

TOWF

TOW

TYP

TOWF

U

TYP

UNO

U

V

UNO

VCT

V

VERT

VCT

VERT

VERT

VIN

VERT

VNR

VIN

W

VNR

W/

W

W/OUT

W/

WD

W/OUT

WDW

WD

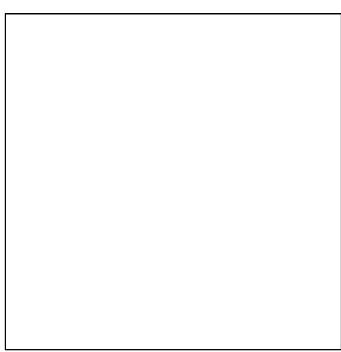
WINDOW

WDW

WINDOW

SHEET NUMBER SHEET NAME

GENERAL	COVER	PREVIOUSLY ISSUED
G000	DRAWING INDEX, ABBREVIATIONS, GENERAL NOTES	10/30/2023
G1.0	ADA REQUIREMENTS	
G2.0		
CIVIL		
C1.0	EXISTING CONDITIONS PLAN	
C2.0	EXISTING CONDITIONS PLAN	
C3.0	SITE GRADING & DRAINAGE PLAN	
C-4.0	SITE UTILITY PLAN	
C5.0	PAVEMENT MARKING & SIGNAGE PLAN	
C6.0	CONSTRUCTION DETAILS	
C6.1	CONSTRUCTION DETAILS	
C6.2	CONSTRUCTION DETAILS	
LANDSCAPE		
L2.0	LAYOUT AND MATERIALS PLAN	
L3.0	PLANTING PLAN	
L3.1	PLANTING DETAILS	
L4.0	SITE PLAN	
STRUCTURAL		
S1.01	GROUND FLOOR PLAN	
S1.02	LOW ROOF PLAN	
S1.03	HIGH ROOF PLAN	
ARCHITECTURAL		
A1.01	GROUND FLOOR PLAN	
A1.02	ATTIC PLAN	
A1.04	ROOF PLAN	
A1.11	GROUND FLOOR FINISH PLAN	
A2.01	GROUND FLOOR REFLECTED CEILING PLAN	
A3.01	OVERALL EXTERIOR ELEVATIONS	
A4.01	BUILDING SECTIONS	
A4.02	BUILDING SECTIONS	
A5.01	WALL SECTIONS	
A5.02	WALL SECTIONS	
A5.03	WALL SECTIONS	
A5.04	WALL SECTIONS	
A6.01	TYPICAL EXTERIOR DETAILS	
A6.02	TYPICAL EXTERIOR DETAILS	
A7.01	INTERIOR ELEVATIONS	
A7.02	INTERIOR ELEVATIONS	
A7.03	INTERIOR ELEVATIONS	
A7.04	INTERIOR ELEVATIONS	
A8.11	HOLLOW METAL FRAME DETAILS	
A8.20	MILLWORK DETAILS - KITCHEN AND STAFF WORKROOM CLOSET	
A8.21	MILLWORK DETAILS - CIRCULATION DESK	
A8.22	MILLWORK DETAILS - SELF CHECKOUT	
A8.23	MILLWORK DETAILS - LIBRARY OF THINGS	
A8.24	MILLWORK DETAILS - STAFF WORKROOM SHELF AND WORKSTATION	
A9.01	EXTERIOR WALL ASSEMBLIES	
A9.02	INTERIOR PARTION TYPES	
A9.03	FINISH SCHEDULE	
A9.05	WINDOW SCHEDULE	
A9.06	WINDOW LAYOUT	
A9.11	DOOR SCHEDULE & DOOR TYPES	
A9.13	WINDOW DETAILS	
A10.01	GROUND FLOOR FURNITURE PLAN	
PLUMBING		
P0.01	PLUMBING LEGEND, ABBREVIATIONS, AND GENERAL NOTES	
P0.02	PLUMBING SCHEDULES & DETAILS	
P1.01	PLUMBING PLAN	
MECHANICAL		
M0.01	MECHANICAL LEGENDS, ABBREVIATIONS, AND GENERAL NOTES	
M1.01	MECHANICAL GRUIND FLOOR PLAN	
M2.01	MECHANICAL DETAILS	
M3.01	MECHANICAL SCHEDULES	
ELECTRICAL		
E0.01	ELECTRICAL TITLE SHEET (NOTES&DWG LIST)	
E0.02	ELECTRICAL LEGENDS AND ABBREVIATIONS	
E0.03	ELECTRICAL SITE PLAN	
E1.01	ELECTRICAL POWER GROUND FLOOR PLAN	
E2.01	ELECTRICAL LIGHTING GROUND FLOOR PLAN	
E3.01	ELECTRICAL SCHEDULES	
LIGHTING		
LCS-01	LIGHTING CONTROL ZONES	
LCS-02	LIGHTING CONTROL ZONES	
LFS-01	LIGHTIN FIXTURE SCHEDULE	
LL-01	LIGHTING RCP	
PHOTOVOLTAIC SYSTEM		
PV001	PV SITE PLAN	
PV002	PV SYSTEM NOTES	
PV101	PV LAYOUT	
PV201	INVERTER & SOURCE CIRCUIT LAYOUT	
PV202	SOLADECK LOCATION	
PV301	CONDUIT LAYOUT	
PV401	RAIL LAYOUT	
PV402	RACKING DETAILS	
PV403	PREFERRED SOLADECK MOUNTING OPTION DETAILS	
PV404	ALTERNATIVE SOLADECK MOUNTING OPTION DETAIL	
PV501	INVERTER WALL LAYOUT	
PV502	CONDUIT WALL AND BRACKET DETAILS	
PV503	EXT. WALL EOPT ELEVATION	
PV601	SINGLE LINE	
PV701	LABELS	
PV801	DATASHEETS	



T 617 676 0960
T 617 257 0060
T 617 288 1200
T 617 688 1200
T 617 354 4602
T 617 456 5855
T 617 500 7833

Simpson Associates
BALA Consulting Engineers
B&B Engineering
La Messure Engineering
LAM Partners
M&M Associates
S&S Design Associates
Code Red Consultants

Landscaping
MEP/PEP
Structural
Lighting
Cost Estimator
Code Consultant

SHUTESBURY PUBLIC LIBRARY

66 Leverett Road

Oudens Elio Architecture, LLC
Landscape Architect
66 Leverett Road
Shutesbury, MA 01158
T 617 422 0960 F 617 422 0961

Revision:	Date:
100% SD Set	04.28.2023
100% SD Redesign Set	07.12.2023
100% DD Set	12.11.2023

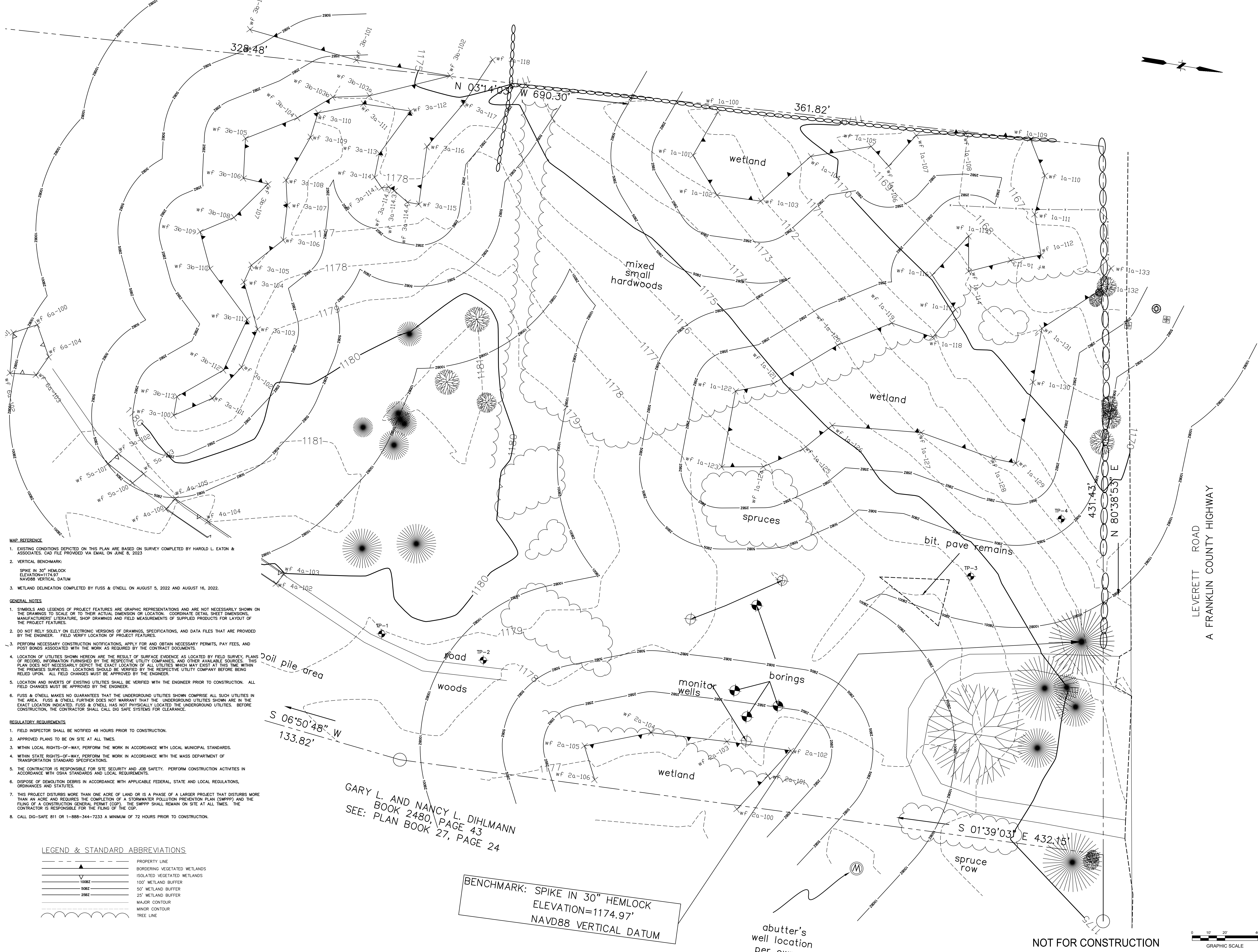
Sheet Title:

DRAWING INDEX, ABBREVIATIONS,
GENERAL NOTES

Date:	02/07/22	Scale:	As indicated	Author:	Author	Checker:	Checker	Project No.:	2301
Drawn:		Drawn:		Drawn:		Drawn:		Drawn:	
Checked:		Checked:		Checked:		Checked:		Checked:	

Sheet No.:

G1.0



- MAP REFERENCE**
- EXISTING CONDITIONS DEPICTED ON THIS PLAN ARE BASED ON SURVEY COMPLETED BY HAROLD L. EATON & ASSOCIATES. CAD FILE PROVIDED VIA EMAIL ON JUNE 8, 2023
 - VERTICAL BENCHMARK:
SPIKE IN 30" HEMLOCK
ELEVATION=1174.97
NAVD88 VERTICAL DATUM
 - WETLAND DELINEATION COMPLETED BY FUSS & O'NEILL ON AUGUST 5, 2022 AND AUGUST 16, 2022.
- GENERAL NOTES**
- SYMBOLS AND LEGENDS OF PROJECT FEATURES ARE GRAPHIC REPRESENTATIONS AND ARE NOT NECESSARILY SHOWN ON THE DRAWINGS TO SCALE OR TO THEIR ACTUAL DIMENSION OR LOCATION. COORDINATE DETAIL SHEET DIMENSIONS, MANUFACTURERS' LITERATURE, SHOP DRAWINGS AND FIELD MEASUREMENTS OF SUPPLIED PRODUCTS FOR LAYOUT OF THE PROJECT FEATURES.
 - DO NOT RELY SOLELY ON ELECTRONIC VERSIONS OF DRAWINGS, SPECIFICATIONS, AND DATA FILES THAT ARE PROVIDED BY THE ENGINEER. FIELD VERIFY LOCATION OF PROJECT FEATURES.
 - PERFORM NECESSARY CONSTRUCTION NOTIFICATIONS, APPLY FOR AND OBTAIN NECESSARY PERMITS, PAY FEES, AND POST BONDS ASSOCIATED WITH THE WORK AS REQUIRED BY THE CONTRACT DOCUMENTS.
 - LOCATION OF UTILITIES SHOWN HEREON ARE THE RESULT OF SURFACE EVIDENCE AS LOCATED BY FIELD SURVEY, PLANS OF RECORD, INFORMATION FURNISHED BY THE RESPECTIVE UTILITY COMPANIES, AND OTHER AVAILABLE SOURCES. THIS PLAN DOES NOT NECESSARILY DEPICT THE EXACT LOCATION OF ALL UTILITIES WHICH MAY EXIST AT THIS TIME WITHIN THE PREMISES SURVEYED. LOCATIONS SHOULD BE VERIFIED BY THE RESPECTIVE UTILITY COMPANY BEFORE BEING RELIED UPON. ALL FIELD CHANGES MUST BE APPROVED BY THE ENGINEER.
 - LOCATION AND INVERTS OF EXISTING UTILITIES SHALL BE VERIFIED WITH THE ENGINEER PRIOR TO CONSTRUCTION. ALL FIELD CHANGES MUST BE APPROVED BY THE ENGINEER.
 - FUSS & O'NEILL MAKES NO GUARANTEES THAT THE UNDERGROUND UTILITIES SHOWN COMPRISE ALL SUCH UTILITIES IN THE AREA. FUSS & O'NEILL FURTHER DOES NOT WARRANT THAT THE UNDERGROUND UTILITIES SHOWN ARE IN THE EXACT LOCATION INDICATED. FUSS & O'NEILL HAS NOT PHYSICALLY LOCATED THE UNDERGROUND UTILITIES. BEFORE CONSTRUCTION, THE CONTRACTOR SHALL CALL DIG SAFE SYSTEMS FOR CLEARANCE.
- REGULATORY REQUIREMENTS**
- FIELD INSPECTOR SHALL BE NOTIFIED 48 HOURS PRIOR TO CONSTRUCTION.
 - APPROVED PLANS TO BE ON SITE AT ALL TIMES.
 - WITHIN LOCAL RIGHTS-OF-WAY, PERFORM THE WORK IN ACCORDANCE WITH LOCAL MUNICIPAL STANDARDS.
 - WITHIN STATE RIGHTS-OF-WAY, PERFORM THE WORK IN ACCORDANCE WITH THE MASS DEPARTMENT OF TRANSPORTATION STANDARD SPECIFICATIONS.
 - THE CONTRACTOR IS RESPONSIBLE FOR SITE SECURITY AND JOB SAFETY. PERFORM CONSTRUCTION ACTIVITIES IN ACCORDANCE WITH OSHA STANDARDS AND LOCAL REQUIREMENTS.
 - DISPOSE OF DEMOLITION DEBRIS IN ACCORDANCE WITH APPLICABLE FEDERAL, STATE AND LOCAL REGULATIONS, ORDINANCES AND STATUTES.
 - THIS PROJECT DISTURBS MORE THAN ONE ACRE OF LAND OR IS A PHASE OF A LARGER PROJECT THAT DISTURBS MORE THAN AN ACRE AND REQUIRES THE COMPLETION OF A STORMWATER POLLUTION PREVENTION PLAN (SWPPP) AND THE FILING OF A CONSTRUCTION GENERAL PERMIT (CGP). THE SWPPP SHALL REMAIN ON SITE AT ALL TIMES. THE CONTRACTOR IS RESPONSIBLE FOR THE FILING OF THE CGP.
 - CALL DIG-SAFE 811 OR 1-888-344-7233 A MINIMUM OF 72 HOURS PRIOR TO CONSTRUCTION.

LEGEND & STANDARD ABBREVIATIONS

	PROPERTY LINE
	BORDERING VEGETATED WETLANDS
	ISOLATED VEGETATED WETLANDS
	100' WETLAND BUFFER
	50' WETLAND BUFFER
	25' WETLAND BUFFER
	MAJOR CONTOUR
	MINOR CONTOUR
	TREE LINE

GARY L. AND NANCY L. DIHLMANN
BOOK 2480, PAGE 43
SEE: PLAN BOOK 27, PAGE 24

BENCHMARK: SPIKE IN 30" HEMLOCK
ELEVATION=1174.97'
NAVD88 VERTICAL DATUM

FUSS & O'NEILL
1550 MAIN STREET, SUITE 400
BOSTON, MA 02110
PH: 617.244.1100
WWW.FUSSANDONEILL.COM

T: 617.276.9860
T: 617.257.6060
T: 617.252.4075
T: 617.252.4075
T: 617.354.1502
T: 617.749.7272

Simpson Associates
BALA Consulting Engineers
Fuss & O'Neill
Landscape Architecture
LAM Partners
AM Fogarty & Associates

Landscape
MEP/PE
Civil
Structural
Lighting
Cost Estimator

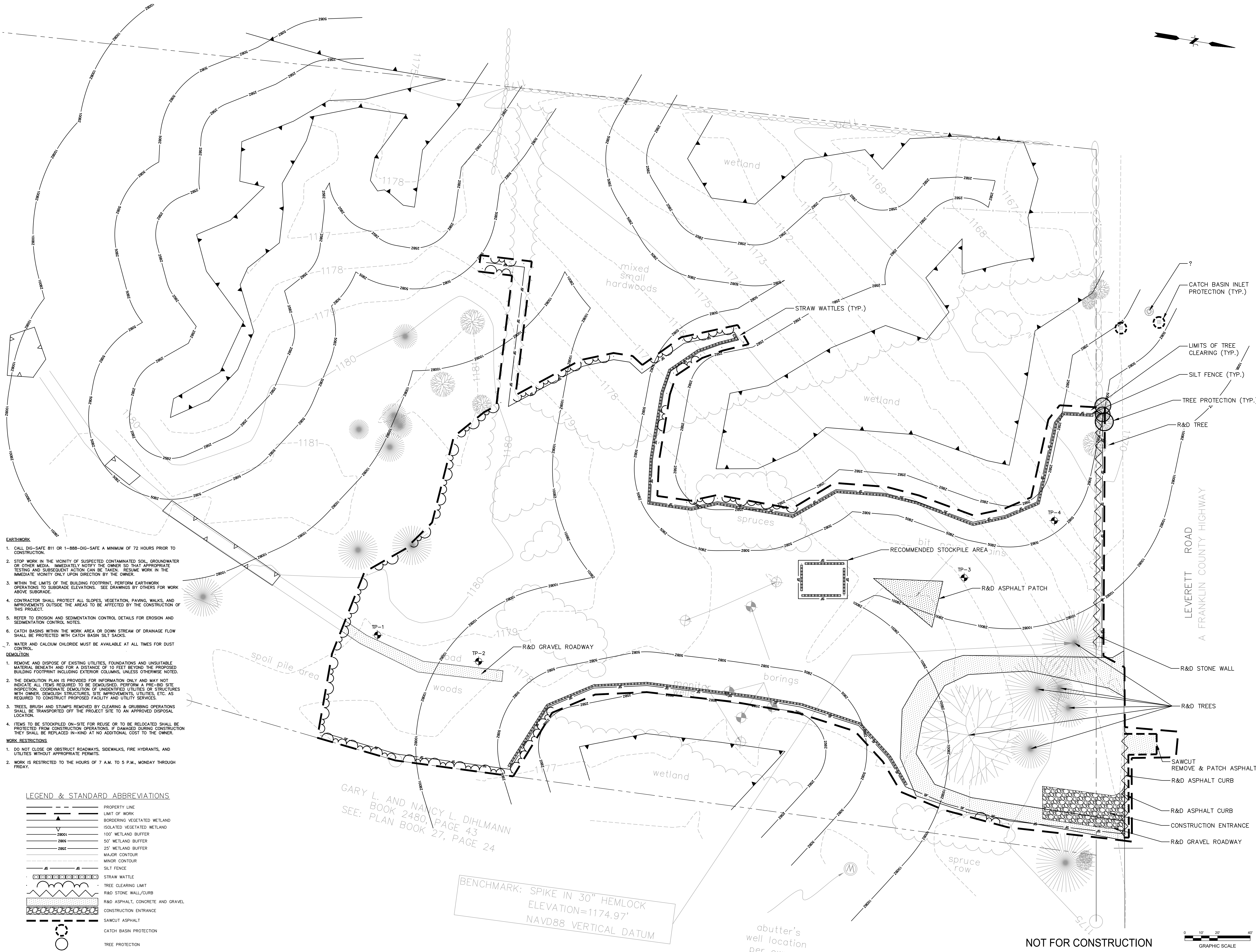
SHUTESBURY PUBLIC LIBRARY
66 Leverett Road
Oudens Elio Architecture, LLC
225 Main Street, Suite 4A, Boston, MA
T: 617.422.0860 F: 617.422.0861

Revision:	Date:
SD SET	04.28.2023
100% SD Redesign Set	07.12.2023
DO SET	12.11.2023

Sheet Title:
EXISTING CONDITIONS PLAN

Date:	12/11/2023
Scale:	1"=20'
Drawn:	EAW
Checked:	ATB
Project No.:	2023110A10

C1.0



- EARTHWORK**
1. CALL DIG-SAFE 811 OR 1-888-DIG-SAFE A MINIMUM OF 72 HOURS PRIOR TO CONSTRUCTION.
 2. STOP WORK IN THE VICINITY OF SUSPECTED CONTAMINATED SOIL, GROUNDWATER OR OTHER MEDIA. IMMEDIATELY NOTIFY THE OWNER SO THAT APPROPRIATE TESTING AND SUBSEQUENT ACTION CAN BE TAKEN. RESUME WORK IN THE IMMEDIATE VICINITY ONLY UPON DIRECTION BY THE OWNER.
 3. WITHIN THE LIMITS OF THE BUILDING FOOTPRINT, PERFORM EARTHWORK OPERATIONS TO SUBGRADE ELEVATIONS. SEE DRAWINGS BY OTHERS FOR WORK ABOVE SUBGRADE.
 4. CONTRACTOR SHALL PROTECT ALL SLOPES, VEGETATION, PAVING, WALKS, AND IMPROVEMENTS OUTSIDE THE AREAS TO BE AFFECTED BY THE CONSTRUCTION OF THIS PROJECT.
 5. REFER TO EROSION AND SEDIMENTATION CONTROL DETAILS FOR EROSION AND SEDIMENTATION CONTROL NOTES.
 6. CATCH BASINS WITHIN THE WORK AREA OR DOWN STREAM OF DRAINAGE FLOW SHALL BE PROTECTED WITH CATCH BASIN SILT SACKS.
 7. WATER AND CALCIUM CHLORIDE MUST BE AVAILABLE AT ALL TIMES FOR DUST CONTROL.
- DEMOLITION**
1. REMOVE AND DISPOSE OF EXISTING UTILITIES, FOUNDATIONS AND UNSUITABLE MATERIAL BENEATH AND FOR A DISTANCE OF 10 FEET BEYOND THE PROPOSED BUILDING FOOTPRINT INCLUDING EXTERIOR COLUMNS, UNLESS OTHERWISE NOTED.
 2. THE DEMOLITION PLAN IS PROVIDED FOR INFORMATION ONLY AND MAY NOT INDICATE ALL ITEMS REQUIRED TO BE DEMOLISHED. PERFORM A PRE-BID SITE INSPECTION. COORDINATE DEMOLITION OF UNIDENTIFIED UTILITIES OR STRUCTURES WITH OWNER. DEMOLISH STRUCTURES, SITE IMPROVEMENTS, UTILITIES, ETC. AS REQUIRED TO CONSTRUCT PROPOSED FACILITY AND UTILITY SERVICES.
 3. TREES, BRUSH AND STUMPS REMOVED BY CLEARING & GRUBBING OPERATIONS SHALL BE TRANSPORTED OFF THE PROJECT SITE TO AN APPROVED DISPOSAL LOCATION.
 4. ITEMS TO BE STOCKPILED ON-SITE FOR REUSE OR TO BE RELOCATED SHALL BE PROTECTED FROM CONSTRUCTION OPERATIONS. IF DAMAGED DURING CONSTRUCTION THEY SHALL BE REPLACED IN-KIND AT NO ADDITIONAL COST TO THE OWNER.
- WORK RESTRICTIONS**
1. DO NOT CLOSE OR OBSTRUCT ROADWAYS, SIDEWALKS, FIRE HYDRANTS, AND UTILITIES WITHOUT APPROPRIATE PERMITS.
 2. WORK IS RESTRICTED TO THE HOURS OF 7 A.M. TO 5 P.M., MONDAY THROUGH FRIDAY.

LEGEND & STANDARD ABBREVIATIONS

- PROPERTY LINE
LIMIT OF WORK
BORDERING VEGETATED WETLAND
ISOLATED VEGETATED WETLAND
100' WETLAND BUFFER
50' WETLAND BUFFER
25' WETLAND BUFFER
MAJOR CONTOUR
MINOR CONTOUR
SILT FENCE
STRAW WATTLE
TREE CLEARING LIMIT
R&D STONE WALL/CURB
R&D ASPHALT, CONCRETE AND GRAVEL
CONSTRUCTION ENTRANCE
SAWCUT ASPHALT
CATCH BASIN PROTECTION
TREE PROTECTION

FUSS & O'NEILL
1550 MAIN STREET, SUITE 400
SPRINGFIELD, MA 01103
PH: 413.244.1111
WWW.FUSSONLINE.COM

T: 617.676.9860
T: 617.537.6060
T: 617.282.4075
T: 617.354.1502
T: 781.749.7272

Simpson Associates
BALA Consulting Engineers
Leiss & O'Neil
LAI Partners
AM Fogarty & Associates

Landscape
MEP/PE
Civil
Structural
Lighting
Cost Estimator

SHUTESBURY PUBLIC LIBRARY
66 Leverett Road
Oudens Elio Architecture, LLC
92 Main Street, Suite 4A, Boston, MA
T: 617.422.0860 F: 617.422.0861

Revision:	Date:
SD Set	04.28.2023
100% SD Redesign Set	07.12.2023
DO SET	12.11.2023

Sheet Title:

EXISTING CONDITIONS PLAN

Date: 12/11/2023
Scale: 1"=20'
Drawn: EAV
Checked: ATB
Project No: 2023110A10

C2.0

Sheet No.:



Landscape MEP/FP Civil Structural Lighting Cost Estimator	Simpson Associates BALA Consulting Engineers Fuss & O'Neill Lo Mesurier Engineering LMI Partners AMI Fogarty & Associates	T. 617.876.8960 T. 617.357.6060 T. 617.282.4875 T. 617.868.1200 T. 617.354.4502 T. 781.749.7572
--	--	--

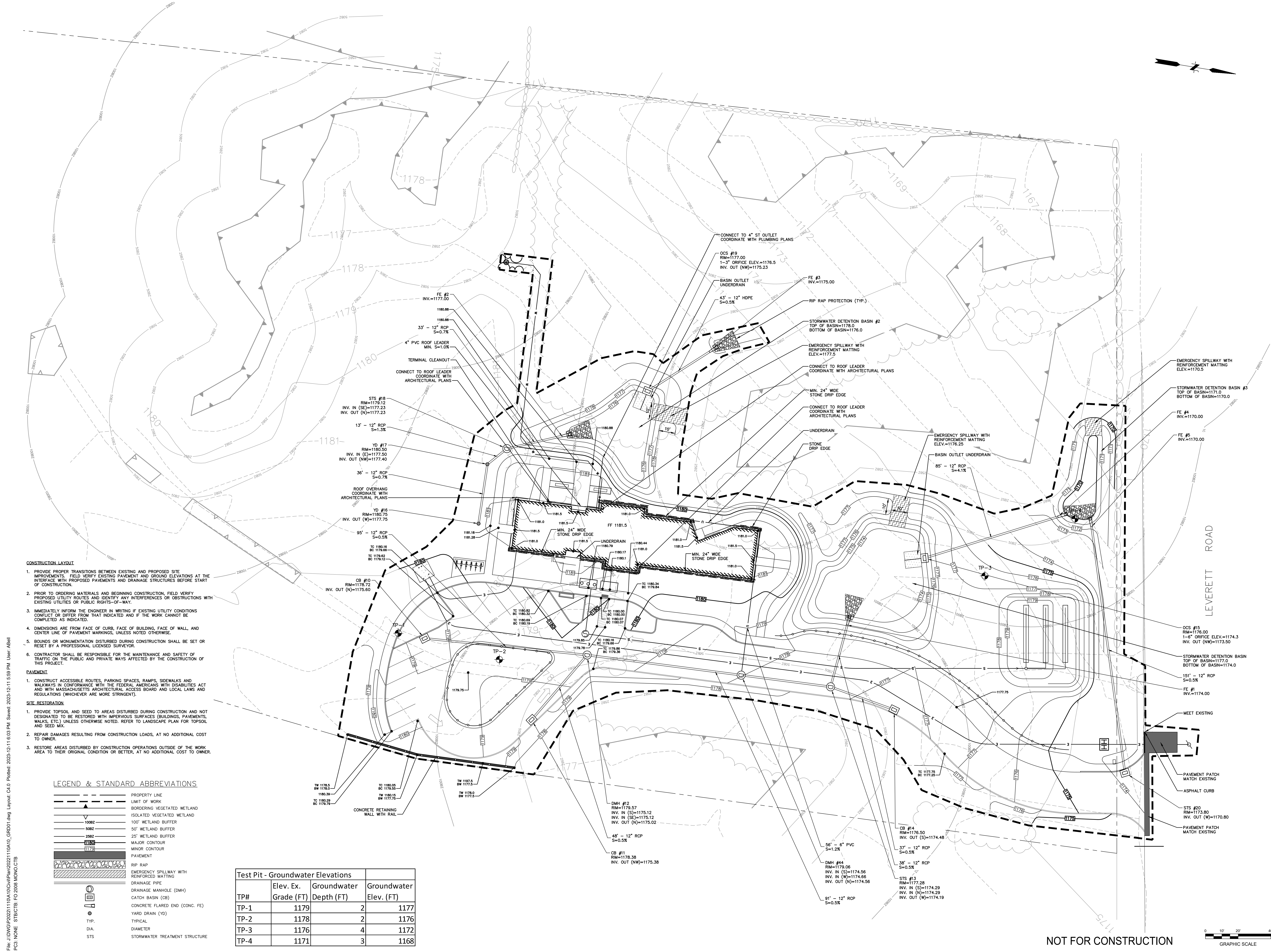
SHUTESBURY PUBLIC LIBRARY
66 Leverett Road
Oudens Elio Architecture, LLC
46 William Street, Suite 4A, Boston, MA
02118

[illegible]

Sheet Title: SITE GRADING & DRAINAGE PLAN

Date:	12/11/2023
Scale:	1"=20'
Drawn:	ATB
Checked:	Checker
Project No:	20221110.A10

Sheet No.: C3.0



File: J:\DWG\2022\11\0A\10\Civil\Plan\2022\11\0A\10_GRD01.dwg Layout: C4.0 Plotted: 2023-12-11 6:03 PM Saved: 2023-12-11 5:59 PM User: ABell
PC3: NONE STB/CTB: FO 2008 MONO.CTB

File: J:\DWG\2023\110A\10C\Shutesbury\2023110A10C_U101.dwg Layout: C5.0 Plotted: 2023-12-11 6:04 PM Saved: 2023-12-11 6:01 PM User: ABail
PC3 NONE STRC:TB:FO 2008 MONO C7B

UTILITY NOTES:

1. ALL UTILITY WORK SHALL BE PERFORMED IN CONFORMANCE WITH LOCAL, STATE AND INDIVIDUAL UTILITY COMPANY STANDARD SPECIFICATIONS AND DETAILS. COORDINATE UTILITY SERVICE DISCONNECTS WITH UTILITY REPRESENTATIVES. COORDINATE FINAL DESIGN LOADS AND LOCATIONS WITH OWNER.
2. BE RESPONSIBLE FOR ANY AND ALL COSTS ASSOCIATED WITH UTILITY MODIFICATIONS AND CONNECTIONS, INCLUDING APPLICATION FEES, BONDING, AND INSPECTION FEES, REGARDLESS OF THE ENTITY THAT PERFORMS THE WORK.
3. COORDINATE ALL UTILITY WORK WITH THE APPROPRIATE UTILITY COMPANY REPRESENTATIVES AND PROVIDE ADEQUATE NOTICE TO UTILITIES TO PREVENT DELAYS IN CONSTRUCTION.
4. BE RESPONSIBLE FOR COORDINATION, REMOVAL AND/OR RELOCATION OF OVERHEAD WIRES AND POLES.
5. NOTIFY THE OWNER, TOWN OF SHUTESBURY, AND ADJUTING PROPERTY OWNERS A MINIMUM OF 24 HOURS PRIOR TO DISRUPTION OF ANY UTILITY SERVICES.

LEGEND & STANDARD ABBREVIATIONS

	PROPERTY LINE
	LIMIT OF WORK
	BORDERING VEGETATED WETLAND
	ISOLATED VEGETATED WETLAND
	100' WETLAND BUFFER
	50' WETLAND BUFFER
	25' WETLAND BUFFER
	MAJOR CONTOUR
	MINOR CONTOUR
	SEWER LINE
	WATER LINE
	ELECTRIC COMMUNICATIONS
	CONCRETE UTILITY PAD
	SEWER MANHOLE
	HANDHOLD

SEWER GRINDER PUMP
RIM=1180.0
INV. IN=1176.98
INV. OUT=1176.88
2" SDR11 HDPE
SEWER FORCE MAIN

NOT FOR CONSTRUCTION



Date:	12/11/2023
Scale:	1"=20'
Drawn:	ATB
Checked:	Checker
Project No.:	2023110A10

Sheet Title:
SITE UTILITY PLAN

Revision:	Date:
SD Set	04.28.2023
100% SD Redesign Set	07.12.2023
DO SET	12.11.2023

SHUTESBURY PUBLIC LIBRARY
66 Leverett Road
Oudens Elio Architecture, LLC
92 Main Street, Suite 4A, Boston, MA
T 617 422 0860 F 617 422 0861

Landscape
MEP/PP
Civil
Structural
Lighting
Cost Estimator

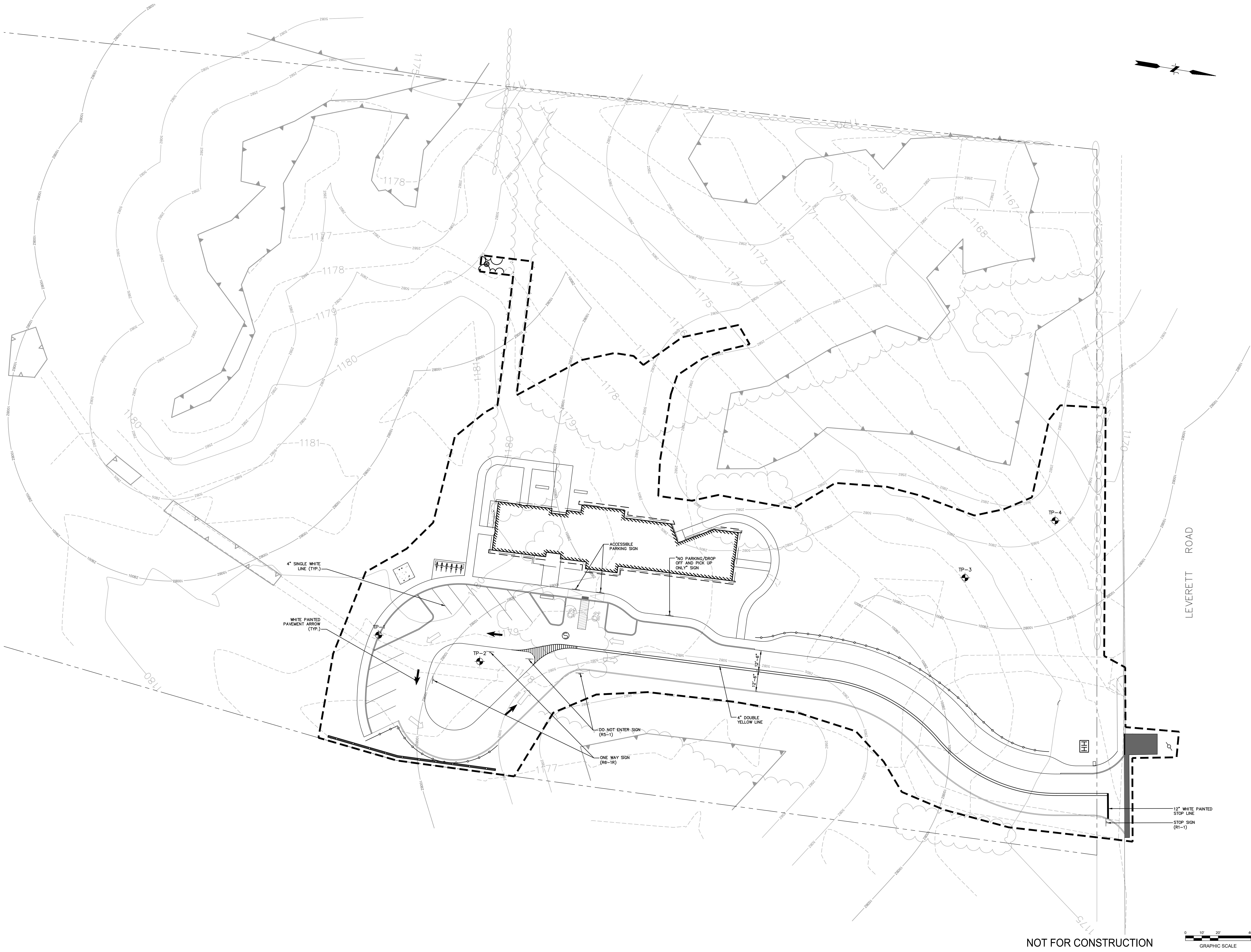
Simpson Associates
BALA Consulting Engineers
Luss & O'Neil
Luss & O'Neil
Luss & O'Neil
Luss & O'Neil
Luss & O'Neil

T 617 576 9860
T 617 557 6060
T 617 282 4075
T 617 354 1502
T 781 749 7272

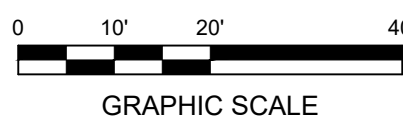
FUSS & O'NEILL
1550 MAIN STREET, SUITE 400
BOSTON, MA 02110
617 422 0861
www.fussandoneill.com



File: \\nps\dfs\CalPlan\DWG\2023\110A\10\CivilPlan\2023\110A10_TPA601.dwg Layout: C5.0 Plotted: 2023-12-12 11:23 AM User: ABell
PC3 NONE STRCCTB: FO 2008 MONO.CTB



NOT FOR CONSTRUCTION




FUSS & O'NEILL
1550 MAIN STREET, SUITE 400
SPRINGFIELD, MA 01103
413.432.0443
www.fussandoneill.com

T. 617.676.9860
T. 617.557.6060
T. 617.282.4076
F. 413.432.0443
www.fussandoneill.com

Simpson Associates
BALA Consulting Engineers
Fuss & O'Neill
Landscape Architecture
Landscape Engineering
Landscape Planning
Landscape Construction
Landscape Maintenance

Landscape
MEP/FP
Civil
Structural
Lighting
Cost Estimator

T. 617.676.9860
T. 617.557.6060
T. 617.282.4076
F. 413.432.0443
www.fussandoneill.com

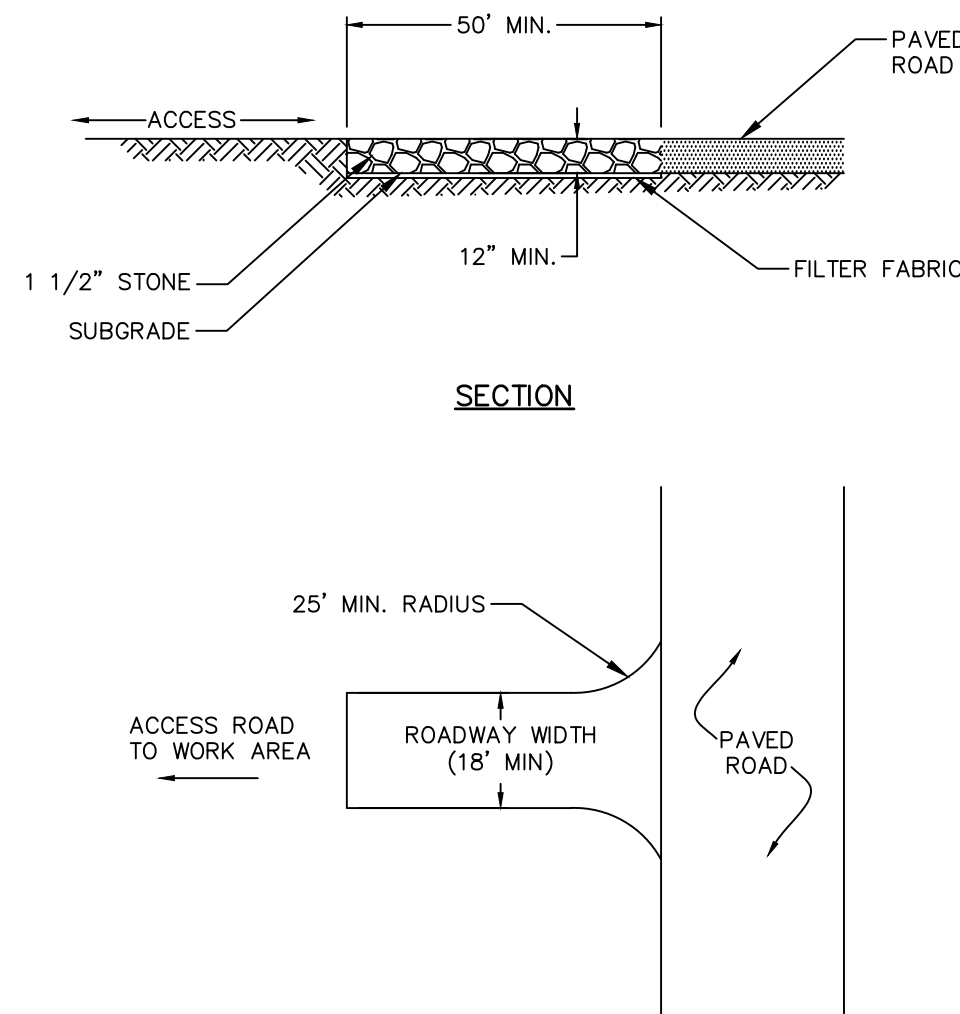
SHUTESBURY PUBLIC LIBRARY
66 Leverett Road
Oudens Elio Architecture, LLC
225 Main Street, Suite 4A, Boston, MA
T. 617.422.0860 F. 617.422.0861

Revision: Date:
SD Set 04.28.2023
100% SD Redesign Set 07.12.2023
DO SET 12.11.2023

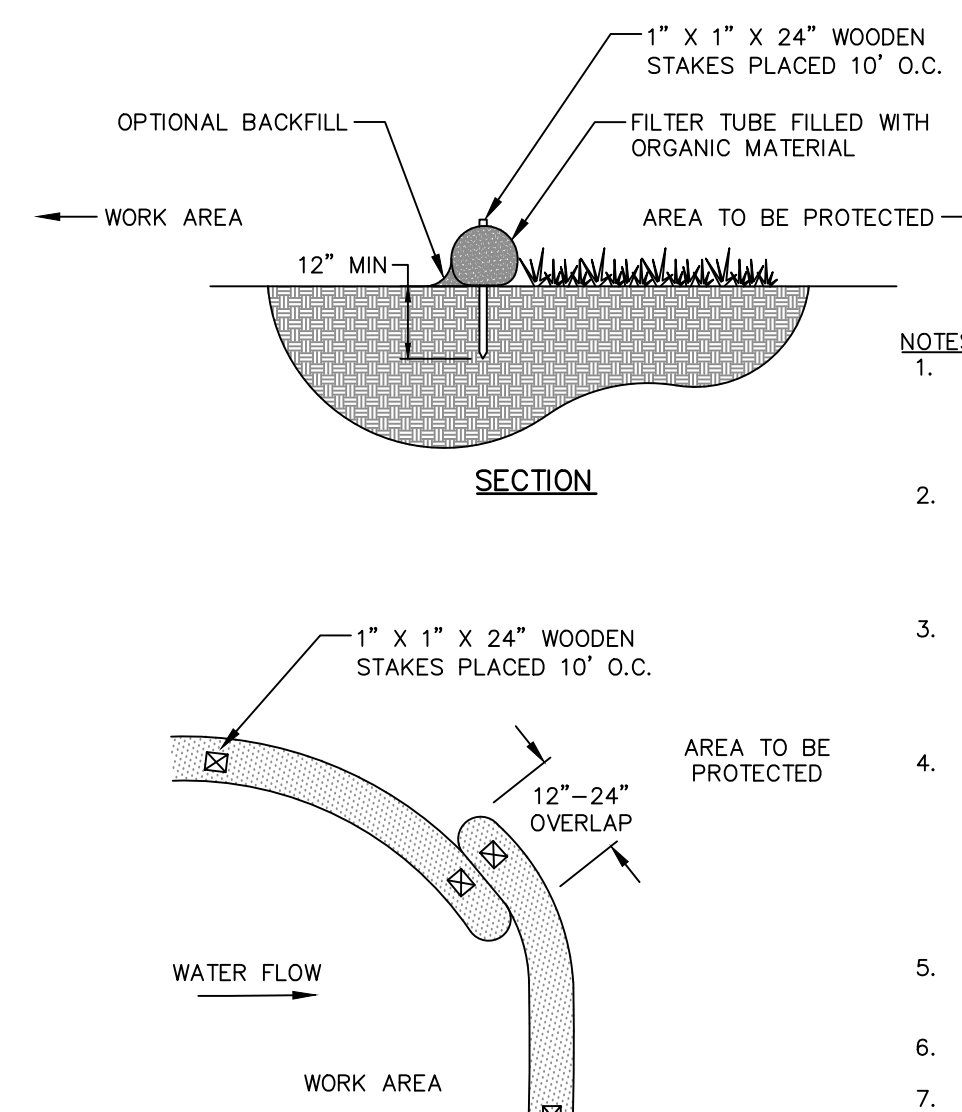
12/11/2023
Scale: 1"=20'
Drawn: ATB
Checked: Checker
Project No: 2023110A10

C5.0

1. EROSION AND SEDIMENT CONTROL MEASURES WILL BE INSTALLED PRIOR TO STUMP REMOVAL AND CONSTRUCTION. STABILIZATION OF ALL REGRADED AND SOIL STOCKPILE AREAS WILL BE INITIATED AND MAINTAINED DURING ALL PHASES OF CONSTRUCTION.
2. SEDIMENT REMOVED FROM EROSION CONTROL STRUCTURES WILL BE DISPOSED OF IN A MANNER WHICH IS CONSISTENT WITH THE INTENT OF THIS PLAN. ALL STRAW WATTLES OR SILT FENCE RETAINING SEDIMENT OVER 6" HIGH SHALL HAVE THE SEDIMENT REMOVED AND ALL DAMAGED EROSION CONTROLS REMOVED AND REPLACED.
3. THE CONTRACTOR WILL BE ASSIGNED THE RESPONSIBILITY FOR IMPLEMENTING THIS EROSION AND SEDIMENT CONTROL PLAN. THIS PLAN INCLUDES THE INSTALLATION AND MAINTENANCE OF CONTROL MEASURES, INFORMING ALL PARTIES ENGAGED ON THE CONSTRUCTION SITE OF THE REQUIREMENTS AND OBJECTIVES OF THE PLAN, AND NOTIFYING THE DISTRICT ENGINEER OF ANY VIOLATIONS. THE CONTRACTOR SHALL BE RESPONSIBLE FOR PROVIDING FOR CONVEYING A COPY OF THE EROSION AND SEDIMENT CONTROL PLAN IF THE TITLE TO THE LAND IS TRANSFERRED.
4. THE CONTRACTOR SHALL BE RESPONSIBLE TO CONTROL DUST AND WIND EROSION THROUGHOUT THE LIFE OF HIS CONTRACT. DUST CONTROL SHALL INCLUDE, BUT IS NOT LIMITED TO, SPRINKLING OF WATER ON EXPOSED SOILS AND COVERING OF EXPOSED CONCRETE SURFACES.
5. IF FINAL GRADING IS TO BE DELAYED MORE THAN THIRTY (30) DAYS AFTER LAND DISTURBANCES CEASE, TEMPORARY VEGETATION OR MULCH SHALL BE USED TO STABILIZE SOILS. OUTSIDE OF THE GROWING SEASON, WOOD MULCH SHALL BE USED.
6. STRAW WATTLES SHALL BE USED ONLY AS A TEMPORARY MEASURE. WHERE CONTROL MEASURES WILL BE REQUIRED FOR LONGER THAN SIXTY (60) DAYS, FILTER FABRIC SHALL BE USED.
7. WHERE DETAHERING IS NECESSARY, THERE SHALL NOT BE A DISCHARGE DIRECTLY INTO WETLANDS OR WATERCOURSES. DISCHARGE SHALL BE INTO AN EXISTING DRAINAGE OR EXISTING DRAINAGE DETERMINED BY LAW, SUCH AS PUMPING WATER INTO A TEMPORARY SEDIMENTATION BASIN, PROVIDING SURGE PROTECTION AT THE INLET AND THE OUTLET OF PUMPS, AND PROVIDING NATURAL VEGETATION OR OTHER MEANS OF PROTECTING THE BASIN FROM EROSION. WHERE PUMPING OPERATION IS CAUSING TURBIDITY PROBLEMS, SAID OPERATION SHALL CEASE UNTIL SUCH TIME AS FEASIBLE TO STOP THE OPERATION. WHERE DISCHARGE INTO A WATERWAY IS REQUIRED, THE CONTRACTOR MUST SUBMIT HIS DESIGN ALONG WITH THE LOCATIONS OF THE DRAINAGE TO THE TOWN OWNERS FOR CONSTRUCTION.
8. INSPECTION - A CERTIFIED SOIL SCIENTIST OR ENGINEER SHALL INSPECT ALL DISTURBED AREAS OF THE CONSTRUCTION ACTIVITY THAT HAVE NOT BEEN FULLY STABILIZED, STRUCTURAL CONTROL MEASURES, AND LOCATIONS WHERE THERE IS A RISK OF EROSION OR SEDIMENTATION. INSPECTION REPORTS SHALL BE SUBMITTED TO THE TOWN WEEKLY, AND TO THE INLAND WETLANDS AGENCY AND THE PLANNING & ZONING COMMISSION MONTHLY, WHERE SITES HAVE BEEN FINALLY STABILIZED. WHERE EROSION OR SEDIMENTATION IS OCCURRING, THE CONTRACTOR SHALL BE REQUIRED TO STOP WORKS SHALL BE CLEARED, REPAIRED, AND OR REPLACED AS REQUIRED. ANY DAMAGED CONTROLS SHALL BE REPAIRED.
9. PERFORM CONSTRUCTION SEQUENCING IN SUCH A MANNER TO CONTROL EROSION AND TO MINIMIZE THE TIME THAT EARTH MATERIALS ARE EXPOSED BEFORE THEY ARE COVERED, SEEDDED, OR OTHERWISE STABILIZED.



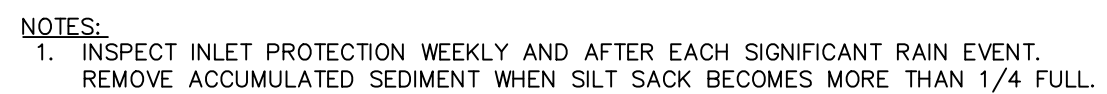
①



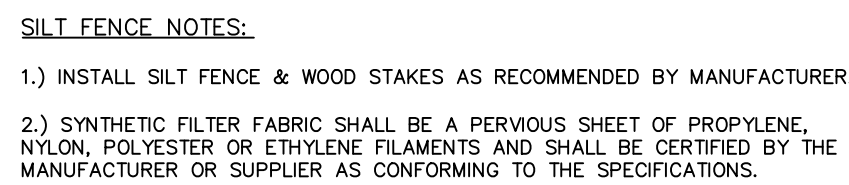
- NOTES:
1. THE FILTER TUBE EXTERIOR SHALL BE 100% ORGANIC. LAMINATE OR OTHER BIOGRADABLE MATERIAL.
 2. APPROVED BY THE CITY OF SPRINGFIELD CONSERVATION COMMISSION AND WILL BE USED IN CONJUNCTION WITH THE ORGANIC INTERIOR MATERIAL.
 3. THE WEIGHT PERCENT SHALL BE BETWEEN 20-100% (DRY WEIGHT BASIS) AS DETERMINED BY ASTM D2974 (METHOD A) STANDARD TEST METHODS FOR MOISTURE, REFINED AND ORGANIC MATTER IN SOIL PEAT AND OTHER ORGANIC SOILS.
 4. THE WEIGHT PERCENT SHALL BE <15% BY DRY WEIGHT (<6% BY WET WEIGHT) AS MEASURED BY ASTM D2216 STANDARD TEST METHOD FOR LOSS ON IGNITION.
 5. THE WEIGHT PERCENT SHALL BE MEASURED BY ASTM D2216 AND ASTM D2974 (CITED ABOVE).
 6. PARTICULATE SIZE AS MEASURED BY SIEVING SHALL BE:

SIEVE SIZE	% PASSING
19 mm	70-100%
#4	30-75%
#10	20-40%
 7. NO PARTICLE MAY BE LONGER THAN 150 MM.
 8. LIQUID SOLUBLE SALTS IN THE ORGANIC INTERIOR MATERIAL SHALL BE <0.5 MMHSC/M, AND THE PH OF SAME SHALL BE BETWEEN 5-8.
 9. REMOVE SEDIMENT FROM FILTER SOCK WHEN THE HEIGHT OF THE TUBING IS BETWEEN 10-15 CM.
 10. UPON REMOVAL, RAKE OUT FILTER BERMS SO THAT THE REMAINING IS NOT IN CONTACT WITH THE DEPTH ON SOIL SUBSTRATE. EXTERIOR TUBING MATERIAL SHALL BE CUT AND REMOVED AND DISPOSED OF AN OFF-SITE LOCATION.

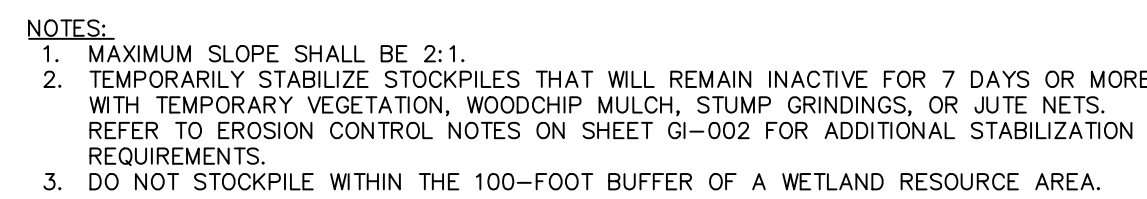
②



7



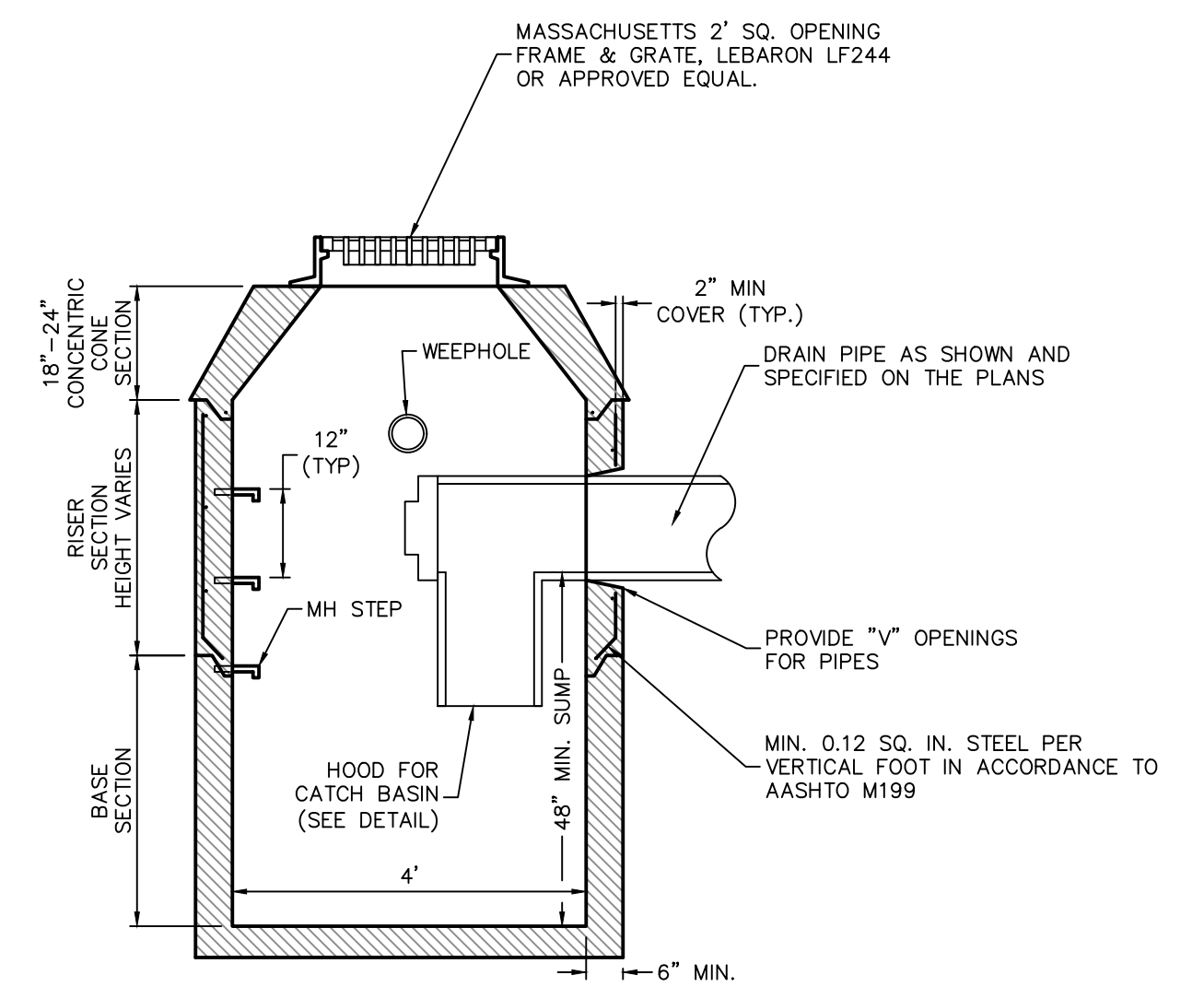
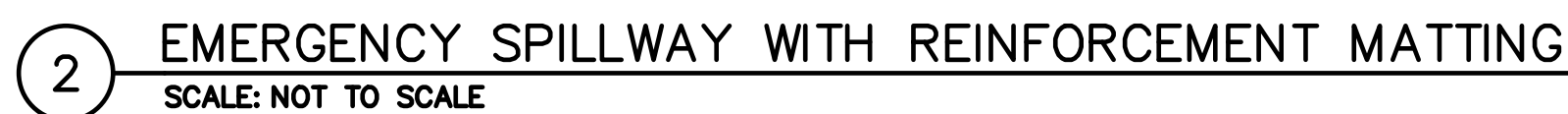
Q

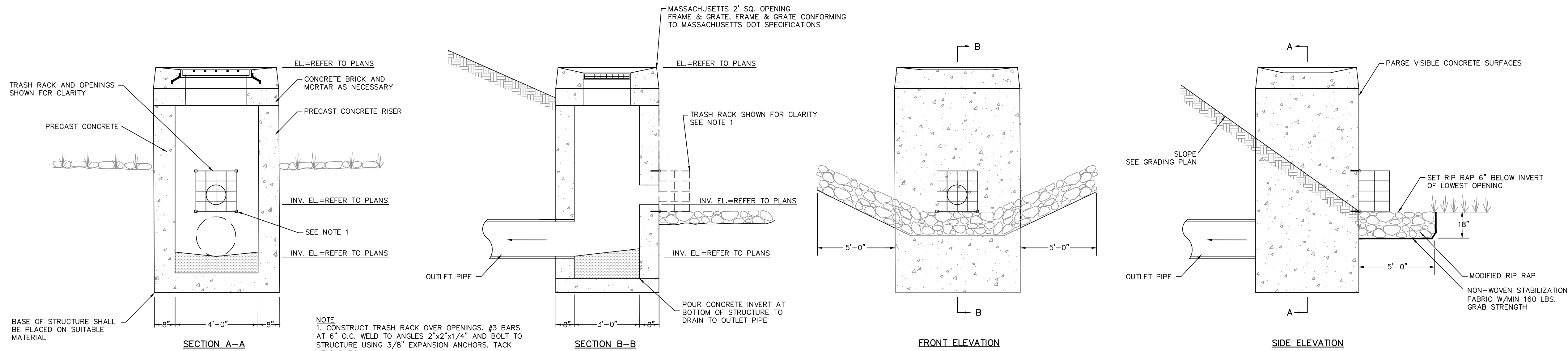


5

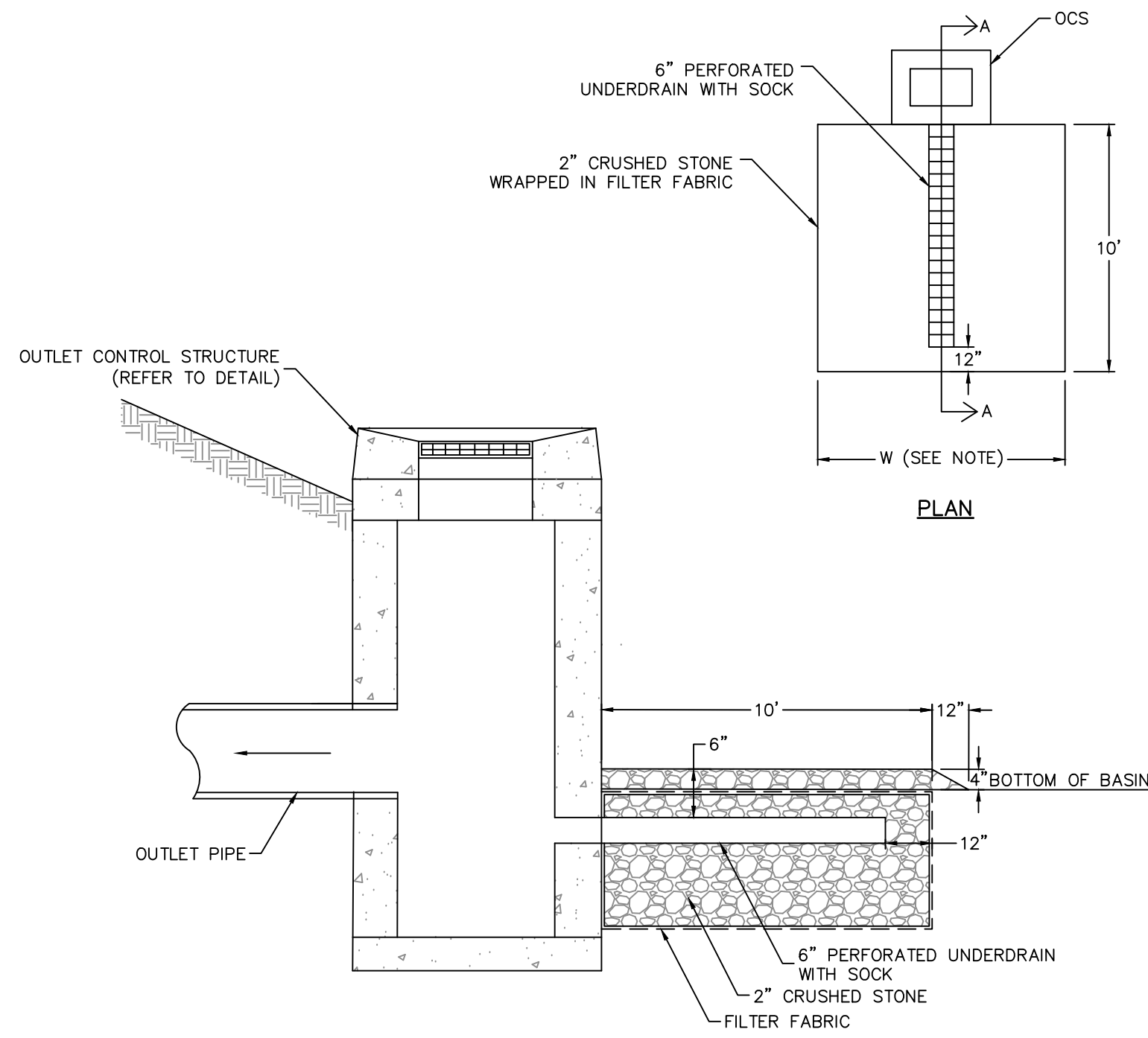


- EXTERIOR CONCRETE NOTES:**
1. ALL WORK TO BE PERFORMED IN ACCORDANCE WITH THE MASSACHUSETTS STATE BUILDING CODE 8TH EDITION AND ALL LOCAL REQUIREMENTS.
 2. DIMENSIONS AND CONDITIONS SHALL BE VERIFIED IN THE FIELD. THE FIELD VERIFICATION OF ALL DIMENSIONS SHALL BE THE RESPONSIBILITY OF THE CONTRACTOR.
 3. ALL CONCRETE SHALL HAVE A DESIGN STRENGTH OF 4000 PSI AT 28 DAYS, UNLESS OTHERWISE NOTED.
 4. REINFORCING RODS SHALL BE ASTM A615, GRADE 60 EXCEPT WHERE FIELD BENDING IS REQUIRED, GRADE 40.
 5. WELDED WIRE MESH SHALL BE ASTM A185. ALL WELDED WIRE MESH SHALL BE IN SHEET FORM.
 6. PROVIDE SAW CUT EXPANSION/CONTRACTION JOINTS AT AREAS OF CHANGE IN THE EXPANSION JOINTS SHALL BE A MINIMUM OF 1/4 OF THE SLAB THICKNESS AND A MINIMUM OF 10' OF THE SLAB THICKNESS. JOINTS MUST BE CUT WITHIN 24 HOURS OF CONCRETE PLACEMENT.
 7. JOINTS MUST BE SPACED IN ACCORDANCE WITH ACI-308 AND THE FOLLOWING RECOMMENDATIONS:
 - 5" THICK SLAB-10'X15'
 - 5" THICK SLAB-18'X18" \leq 325 SO F
 - 6" THICK SLAB-20'X20' \leq 400 SO FT
 - 6" THICK SLAB-20'X20' \leq 500 SO FT
 8. ALL CONCRETE SHALL BE MIXED AND PLACED IN ACCORDANCE WITH THE ACI BUILDING CODE REQUIREMENTS FOR REINFORCED CONCRETE", ACI-308-88 (92)
 9. CONTRACTOR SHALL INSTALL CHASES THROUGH THE FOUNDATION WALLS AS DIRECTED BY THE GENERAL CONTRACTOR.
 10. EXTERIOR CONCRETE SLABS TO HAVE A LIGHT BROOM FINISH. CONCRETE SLABS TO RECEIVE (1) COAT OF CLEAR SEALER/HARDENER EXCEPT AS NOTED.
 11. ALL REINFORCING BARS TO HAVE MINIMUM 2" COVERAGE.
 12. ALL CONCRETE TO BE POURED WITH A MAXIMUM 4' SLUMP.
 13. FLOOR SLAB REINFORCING MUST BE LOCATED AT OR ABOVE MID DEPTH OF THE FLOOR SLAB UNLESS TOP AND BOTTOM REINFORCEMENT IS SPECIFIED. SHEETS ARE TO BE USED IN ALL WELDED WIRE MESH APPLICATIONS, WELDED WIRE MESH TO BE PLACED WITH CHAIRS OR BOLSTERS ONLY.
 14. POURING CONCRETE FLOORS IN A CHECKERBOARD PATTERN IS NOT APPROVED OR RECOMMENDED BY ACI.
 15. SEPARATE FORMS SHOULD BE SMOOTH DOWELS (WRAPPED OR GREASED), DOWEL SIZES SHALL AS FOLLOWS:
 - 4" THICK SLAB 1/2"x1/2" LONG 18" O.C.
 - 5" THICK SLAB 1/2"x1/2" LONG 18" O.C.
 - 6" THICK SLAB 3/4"x1/4" LONG 18" O.C.
 - 8" THICK SLAB 3/4"x1/4" LONG 18" O.C.BOND BREAKER COMPOUND TO BE PAINTED ON PRIOR TO POURING ADJACENT SLAB.
 16. ENGINEER TO APPROVE SUBGRADES PRIOR TO SLAB INSTALLATION.
 17. CONTROL JOINTS AROUND ALL SLAB PENETRATIONS SHOULD BE SAWCUT THE FULL DEPTH OF THE SLAB OR BE DONE AS A CONSTRUCTION JOINT (POURED SEPARATELY).
 18. ALL JOINTS SHALL BE FILLED AND SEALED.



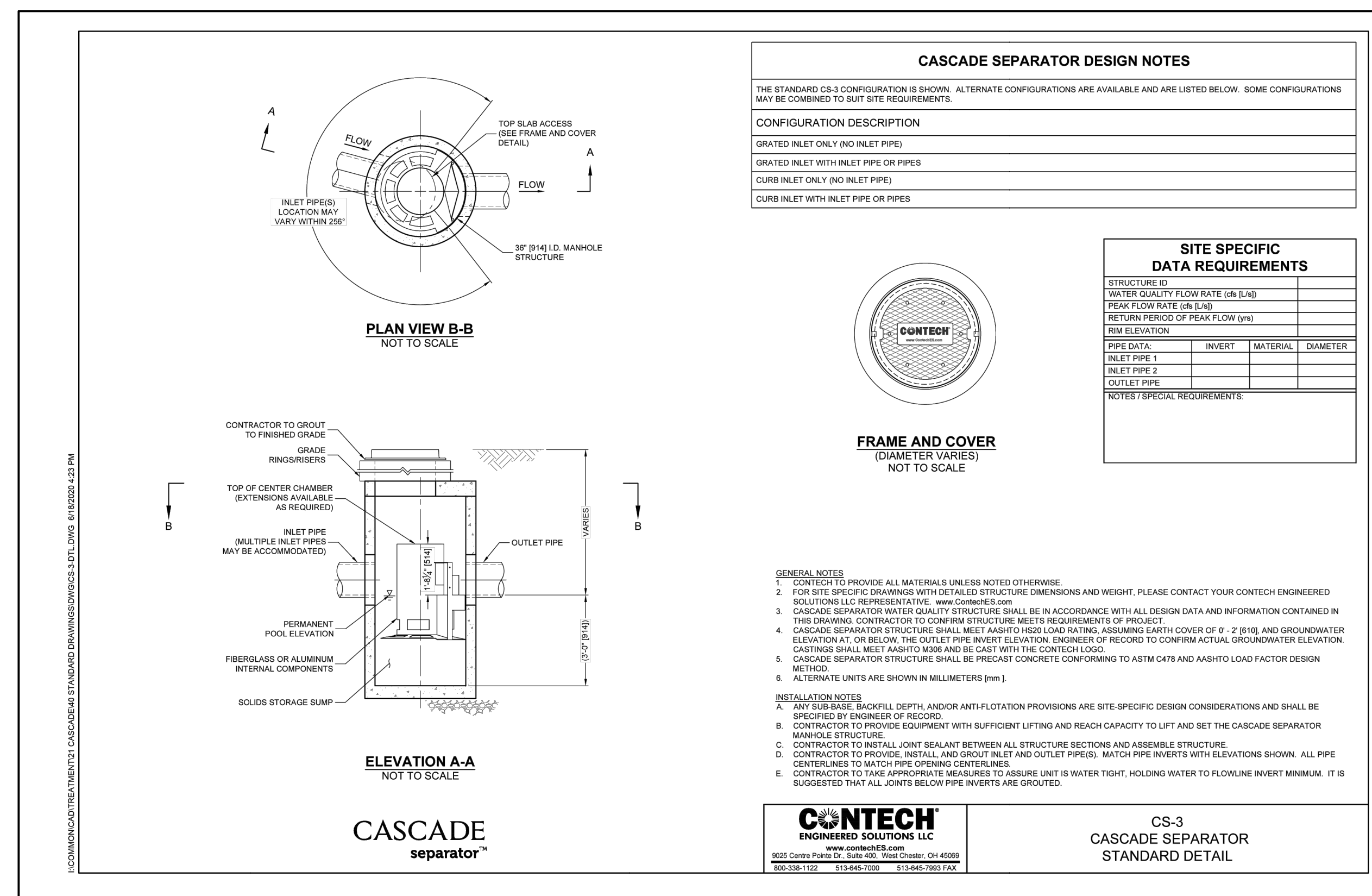


1 **OUTLET CONTROL STRUCTURE (OCS)**
SCALE: NOT TO SCALE.

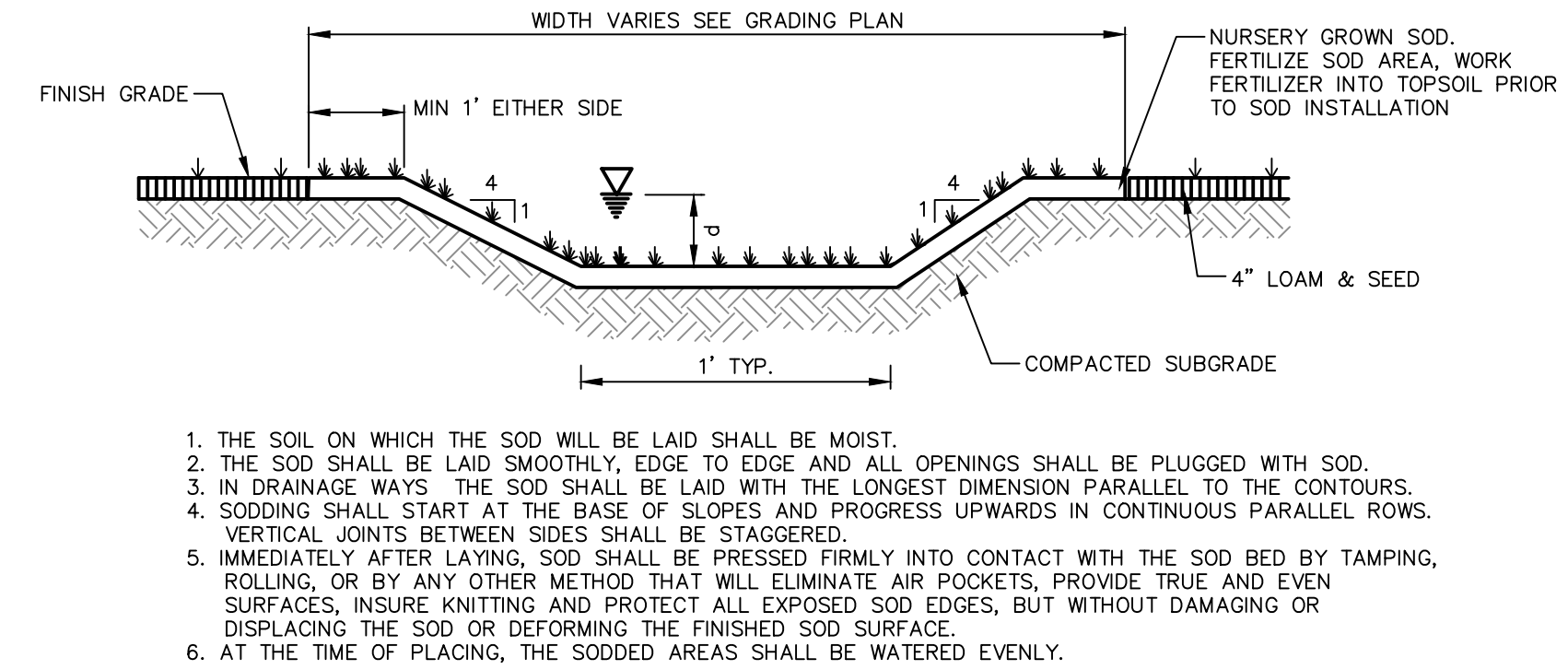


NOTES
1. "W" SHALL BE 10 FEET OR THE WIDTH OF THE BOTTOM OF THE BASIN, WHICHEVER IS LESS.

2 **BASIN OUTLET UNDERDRAIN**
SCALE: NOT TO SCALE.



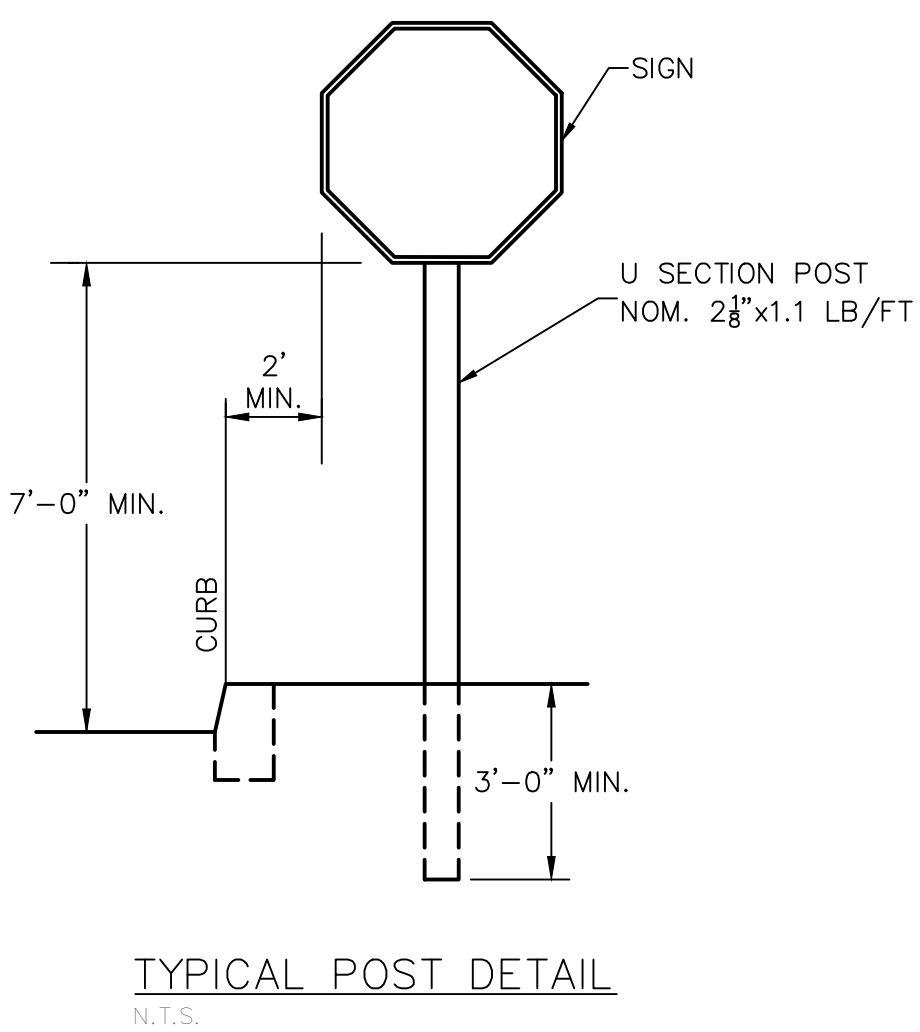
3 **STORMWATER TREATMENT SYSTEM - CASCADE SEPARATOR CS-3 (OR APPROVED EQUAL)**
SCALE: NOT TO SCALE



1. THE SOIL ON WHICH THE SOD WILL BE LAID SHALL BE MOIST.
2. THE SOD SHALL BE LAID SMOOTHLY, EDGE TO EDGE AND ALL OPENINGS SHALL BE PLUGGED WITH SOD.
3. IN DRAINAGE WAYS THE SOD SHALL BE LAID WITH THE LONGEST DIMENSION PARALLEL TO THE CONTOURS.
4. SOILING SHALL START AT THE BASE OF SLOPES AND PROGRESS UPWARDS IN CONTINUOUS PARALLEL ROWS. VERTICAL JOINTS BETWEEN SIDES SHALL BE STAGGERED.
5. IMMEDIATELY AFTER LAYING, SOD SHALL BE PRESSED FIRMLY INTO CONTACT WITH THE SOD BED BY TAMPING, ROLLING, OR BY ANY OTHER METHOD THAT WILL ELIMINATE AIR POCKETS, PROVIDE TRUE AND EVEN SURFACES, INSURE KNOTTING AND PROTECT ALL EXPOSED SOD EDGES, BUT WITHOUT DAMAGING OR DISPLACING THE SOD OR DEFORMING THE FINISHED SOD SURFACE.
6. AT THE TIME OF PLACING, THE SODDED AREAS SHALL BE WATERED EVENLY.

MAINTENANCE: THE SWALE SHALL BE CHECKED AFTER EVERY STORM EVENT GREATER THAN 1" IN 24 HOURS TO DETERMINE THE CONDITION OF THE SWALE. INSPECTION SHALL ALSO INCLUDE DETERMINATIONS OF ANY ACCUMULATIONS OF SILT. REPAIRS SHALL BE PERFORMED IMMEDIATELY. SILT DEPOSITS SHALL BE REMOVED PROMPTLY. ALL AREAS REQUIRING REPAIR/ SILT REMOVAL SHALL BE IMMEDIATELY RE-VEGETATED AND/ OR MULCHED AS SPECIFIED.

4 **GRASS-LINED SWALE**
SCALE: NOT TO SCALE



5 **STANDARD MUTCD SIGNS**
SCALE: N.T.S.



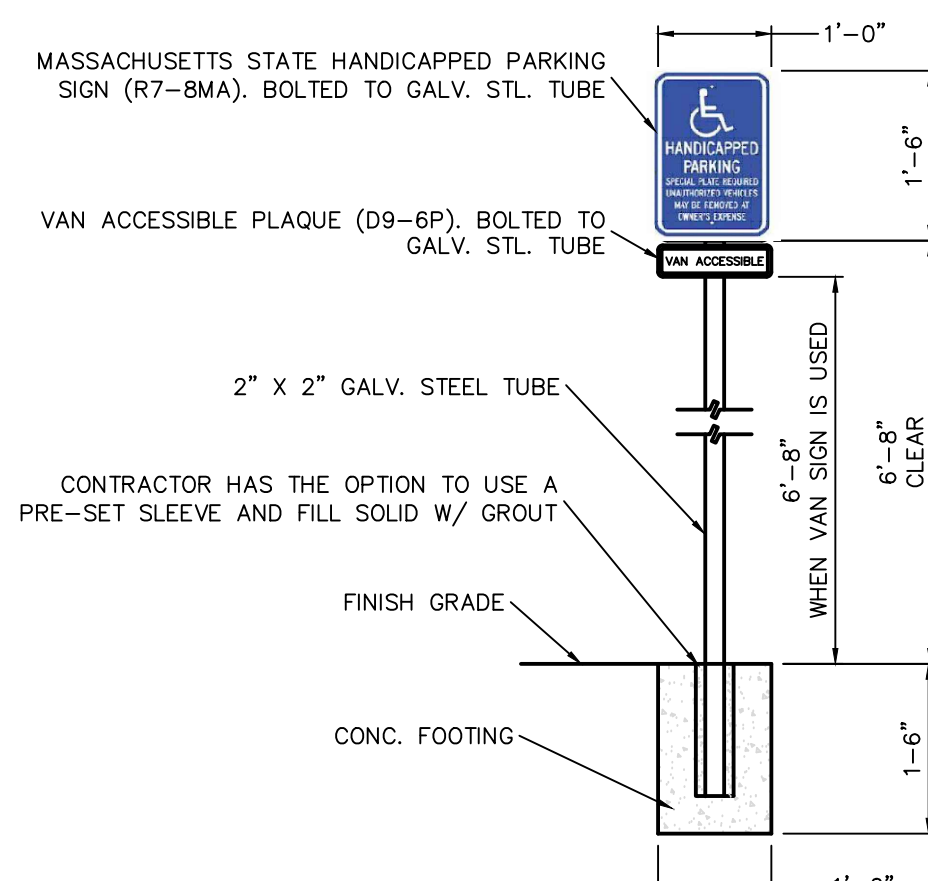
DO NOT ENTER SIGN (R5-1) DETAIL
30"X30"



MASSACHUSETTS STATE HANDICAPPED PARKING SIGN (R7-8MA) DETAIL
12"X18"



VAN ACCESSIBLE PLAQUE (D9-6P) DETAIL
18"X9"



6 **ACCESSIBLE PARKING SIGN**
SCALE: N.T.S.



FUSS & O'NEILL
1550 MAIN STREET, SUITE 400
BIRMINGHAM, AL 35203
205.412.2441
www.fussandoneill.com

T. 617.576.9860
T. 617.557.6060
T. 617.282.4075
T. 617.554.4502
T. 781.749.7272
Simpson Associates
BALA Consulting Engineers
Fuss & O'Neill
Landscape Architecture
LAM Partners
AM Fogarty & Associates
Cost Estimator
Landscape
MEP/PE
Civil
Structural
Lighting

SHUTESBURY PUBLIC LIBRARY
66 Leverett Road
Shutesbury, MA 01088
Oudens Elio Architecture, LLC
225 Main Street, Suite 4A, Boston, MA 02108
T. 617.422.0860 F. 617.422.0861

Revision:	Date:
SD Set	04.28.2023
100% SD Redesign Set	07.12.2023
DO SET	12.11.2023

Sheet Title:
CONSTRUCTION DETAILS

Date: 12/11/2023
Scale: NOT TO SCALE
Drawn: ATB
Checked:
Project No: 2023110A10

C6.2



MATERIALS LEGEND

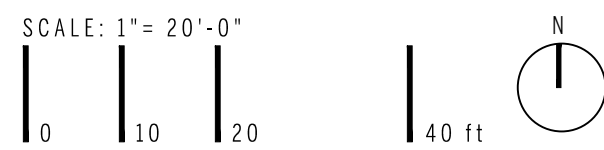
- (A) BITUMINOUS CONCRETE PAVING
- (C) CONCRETE PAVEMENT- PEDESTRIAN
- (UP) CONCRETE UNIT PAVERS ON CONCRETE BASE- PEDESTRIAN
- (DG) STABILIZED DECOMPOSED GRANITE
- (G) GRAVEL PAVEMENT
- (DW) DETECTABLE WARNING PAVER
- (FC) FLUSH CURB
- (TC) RAISED TO FLUSH TRANSITION CURB
- (RC) RAISED CURB
- (ME) METAL MAINTENANCE EDGE- 18" WIDTH
- (PA) PLANTING AREA
- (M) MEADOW
- (WC) CONCRETE SEAT WALL
- (GB) MONOLITHIC GRANITE BENCH
- (SB) SITE SALVAGED BOULDER
- (GR) TIMBER GUARDRAIL - VEHICULAR
- (ES) STEEL PLATE ENTRY SIGN
- (BR) BIKE RACK
- (TR) TRASH RECEPTACLE

SITE FURNISHINGS

- 1 L4.0
- 2 L4.0
- 3 L4.0
- 4 L4.0
- 5 L4.0
- 6 L4.0
- 7 L4.0
- 8 L4.0
- 9 L4.0
- 10 L4.0
- 11 L4.0
- 12 L4.0
- 13 L4.0
- 14 L4.0
- 15 L4.0
- 16 L4.0

SEE PLANTING PLAN, L3.0

SEE PLANTING PLAN, L3.0



T. 617.676.9860
T. 617.357.6060
T. 617.282.4676
T. 617.354.4502
T. 781.749.7272

STIMSON Associates
BALA Consulting Engineers
Lew & Chai
Landscape Architecture
Landscape Engineering
Landscape Architecture
Landscape Architecture
Landscape Architecture

Landscape
MEP/FP
Civil
Structural
Lighting
Cost Estimator

SHUTESBURY PUBLIC LIBRARY

66 Leverett Road

Oudens Elio Architecture, LLC
22 Main Street, Suite 4A, Boston, MA
02108
T. 617.422.0880 F. 617.422.0881

Revision: Date:

SD Set	04.28.2023
100% SD Redesign Set	07.12.2023
100% DD Set	12.11.2023

Sheet Title:

LAYOUT AND MATERIALS PLAN

Date: 12/1/2023

Scale: LD

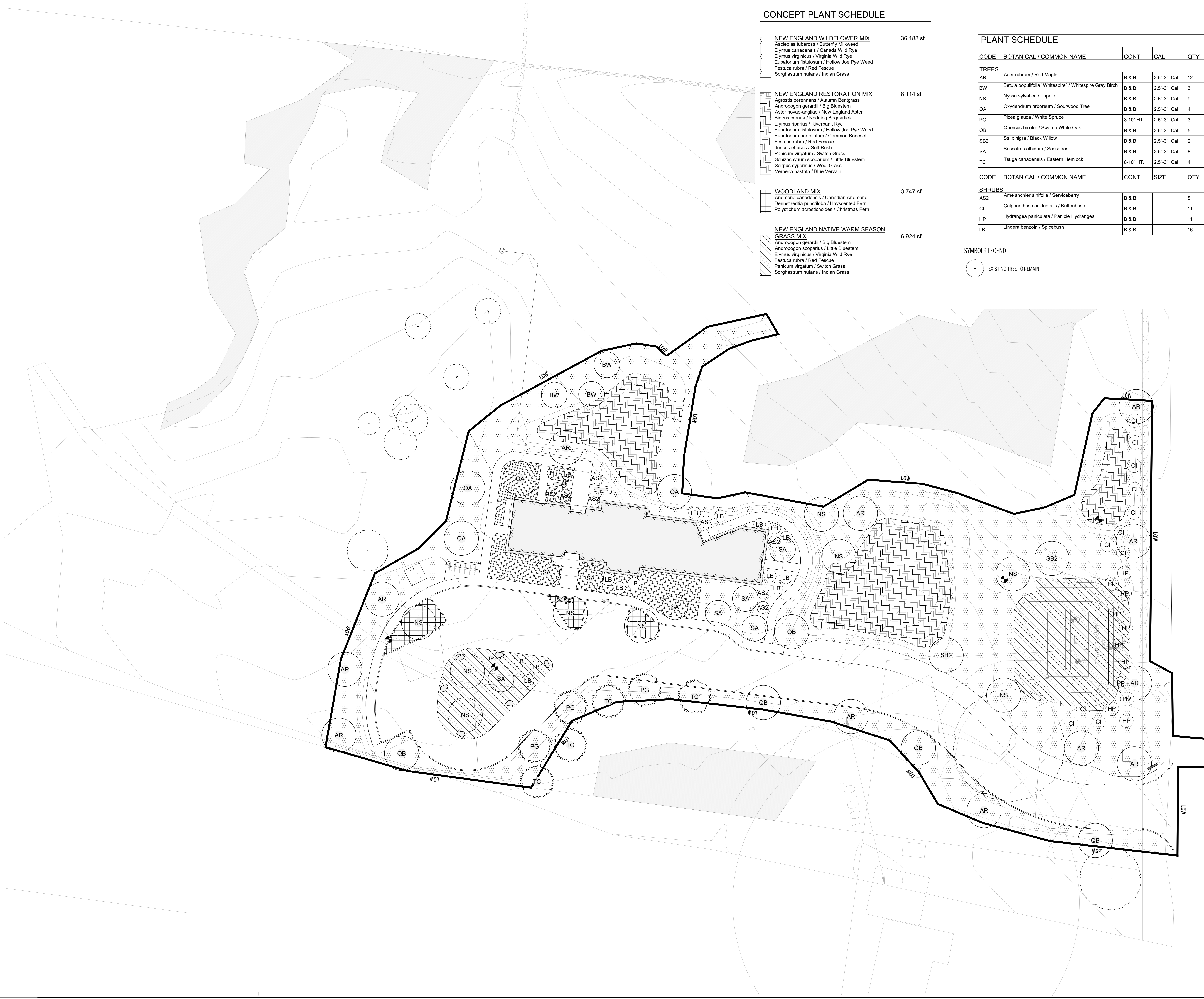
Drawn: GT, CL

Checked: 2304

Project No:

Sheet No.:

L2.0



CONCEPT PLANT SCHEDULE

	NEW ENGLAND WILDFLOWER MIX Asclepias tuberosa / Butterfly Milkweed Elymus canadensis / Canada Wild Rye Elymus virginicus / Virginia Wild Rye Eupatorium fistulosum / Hollow Joe Pye Weed Festuca rubra / Red Fescue Sorghastrum nutans / Indian Grass	36,188 sf
	NEW ENGLAND RESTORATION MIX Agrostis perennans / Autumn Bentgrass Andropogon gerardii / Big Bluestem Aster novae-angliae / New England Aster Bidens cernua / Nodding Beggartick Elymus riparius / Riverbank Rye Eupatorium fistulosum / Hollow Joe Pye Weed Eupatorium perfoliatum / Common Boneset Festuca rubra / Red Fescue Juncus effusus / Soft Rush Panicum virgatum / Switch Grass Schizachyrium scoparium / Little Bluestem Scirpus cyperinus / Wood Grass Verbena hastata / Blue Vervain	8,114 sf
	WOODLAND MIX Anemone canadensis / Canadian Anemone Dennstaedtia punctiloba / Hayscented Fern Polystichum acrostichoides / Christmas Fern	3,747 sf
	NEW ENGLAND NATIVE WARM SEASON GRASS MIX Andropogon gerardii / Big Bluestem Andropogon scoparius / Little Bluestem Elymus virginicus / Virginia Wild Rye Festuca rubra / Red Fescue Panicum virgatum / Switch Grass Sorghastrum nutans / Indian Grass	6,924 sf

PLANT SCHEDULE					
CODE	BOTANICAL / COMMON NAME	CONT	CAL	QTY	REMARKS
TREES					
AR	Acer rubrum / Red Maple	B & B	2.5"-3" Cal	12	
BW	Betula populifolia 'Whitespire' / Whitespire Gray Birch	B & B	2.5"-3" Cal	3	
NS	Nyssa sylvatica / Tupelo	B & B	2.5"-3" Cal	9	
OA	Oxydendrum arboreum / Sourwood Tree	B & B	2.5"-3" Cal	4	
PG	Picea glauca / White Spruce		8-10' HT.	3	
QB	Quercus bicolor / Swamp White Oak	B & B	2.5"-3" Cal	5	
SB2	Salix nigra / Black Willow	B & B	2.5"-3" Cal	2	
SA	Sassafras albidum / Sassafras	B & B	2.5"-3" Cal	8	
TC	Tsuga canadensis / Eastern Hemlock		8-10' HT.	4	
CODE	BOTANICAL / COMMON NAME	CONT	SIZE	QTY	REMARKS
SHRUBS					
AS2	Amelanchier alnifolia / Serviceberry	B & B		8	
CI	Celastrus occidentalis / Buttonbush	B & B		11	
HP	Hydrangea paniculata / Panicle Hydrangea	B & B		11	
LB	Lindera benzoin / Spicebush	B & B		16	

SYMBOLS LEGEND
◉ EXISTING TREE TO REMAIN

T. 617.576.9860
F. 617.557.0060
T. 617.557.0060
F. 617.557.0060
T. 617.557.0060
F. 617.557.0060
T. 617.557.0060
F. 617.557.0060

STIMSON Associates
BALA Consulting Engineers
L. 617.557.0060
L. 617.557.0060
L. 617.557.0060
L. 617.557.0060
L. 617.557.0060
L. 617.557.0060

Landscape
MEP/PE
Civil
Structural
Lighting
Cost Estimator

SHUTESBURY PUBLIC LIBRARY
66 Leverett Road
Oudens Elio Architecture, LLC
200 Main Street, Suite 4A, Boston, MA
T. 617.492.0880 F. 617.492.0881

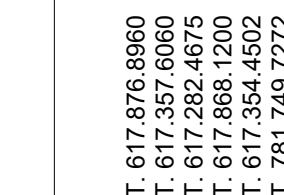
Revision: Date:
SD Set 04.28.2023
100% SD Redesign Set 07.12.2023
100% DD Set 12.11.2023

Sheet Title:
PLANTING PLAN

Date: 12/1/2023
Scale: LD
Drawn: GT/SL
Checked: 2304
Project No:

L3.0

SCALE: 1"= 20'-0"
0 10 20 40 ft



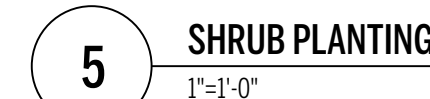
STIMSON Associates
BALA Consulting Engineers
Fuss & O'neil
Le Messurier Engineering
LAM Partners
LAM Farley & Associates

SHUTESBURY PUBLIC LIBRARY
66 Leverett Road

Revision:	
SD Set	0
100% SD Redesign Set	1
100% DO Set	

Date: 12/13/2023

Sheet No.:



3 TREE SOIL PROFILE
1"-1'-0"

2 MEADOW SEED SOIL PROFILE
1"=1'-0"

1 SHRUB, GROUNDCOVER, PERENNIAL SOIL PROFILE
1"=1'-0"



