







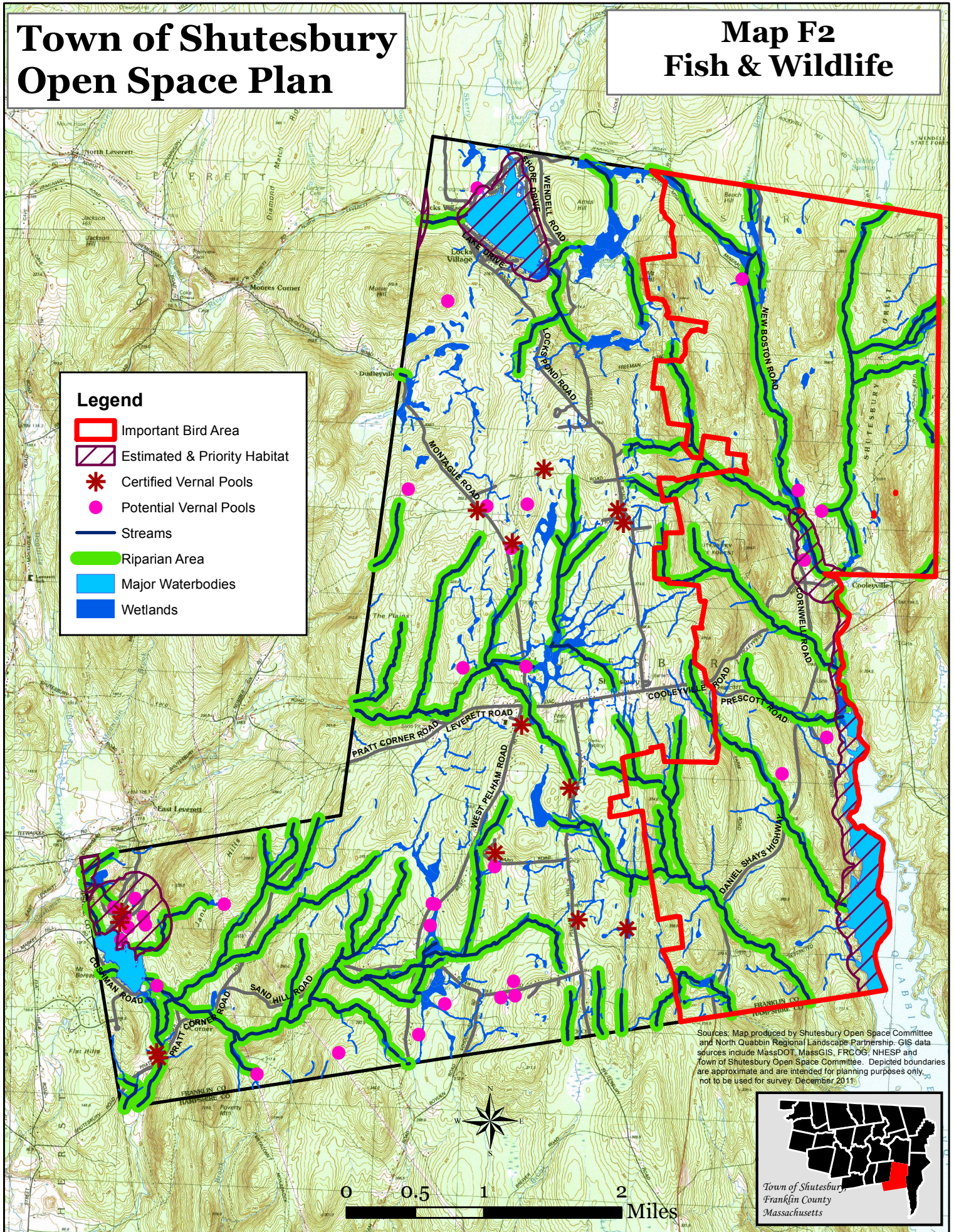


Town of Shutesbury Open Space Plan

Map F2 Fish & Wildlife

Legend

-  Important Bird Area
-  Estimated & Priority Habitat
-  Certified Vernal Pools
-  Potential Vernal Pools
-  Streams
-  Riparian Area
-  Major Waterbodies
-  Wetlands



Sources: Map produced by Shutesbury Open Space Committee and North Quabbin Regional Landscape Partnership. GIS data sources include MassDOT, MassGIS, FRCOG, NHESP and Town of Shutesbury Open Space Committee. Depicted boundaries are approximate and are intended for planning purposes only, not to be used for survey. December 2011.

