







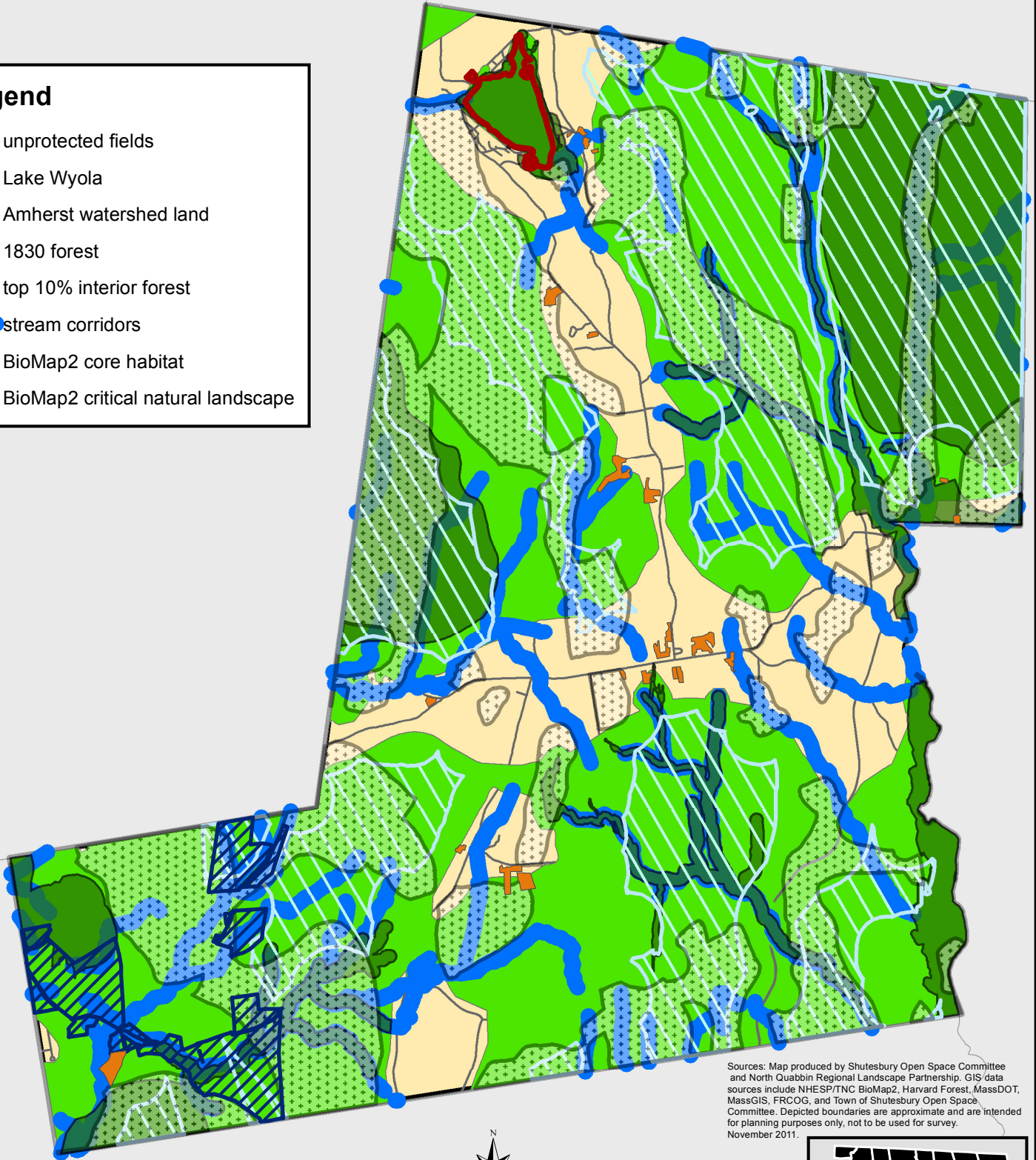


# Town of Shutesbury Open Space Plan

# Map 8 Action Plan

## Legend

-  unprotected fields
-  Lake Wyola
-  Amherst watershed land
-  1830 forest
-  top 10% interior forest
-  stream corridors
-  BioMap2 core habitat
-  BioMap2 critical natural landscape



Sources: Map produced by Shutesbury Open Space Committee and North Quabbin Regional Landscape Partnership. GIS/data sources include NHESP/TNC BioMap2, Harvard Forest, MassDOT, MassGIS, FRCOG, and Town of Shutesbury Open Space Committee. Depicted boundaries are approximate and are intended for planning purposes only, not to be used for survey. November 2011.

