







# Town of Shutesbury Open Space Plan

## Map 5 Unique Features

### Legend

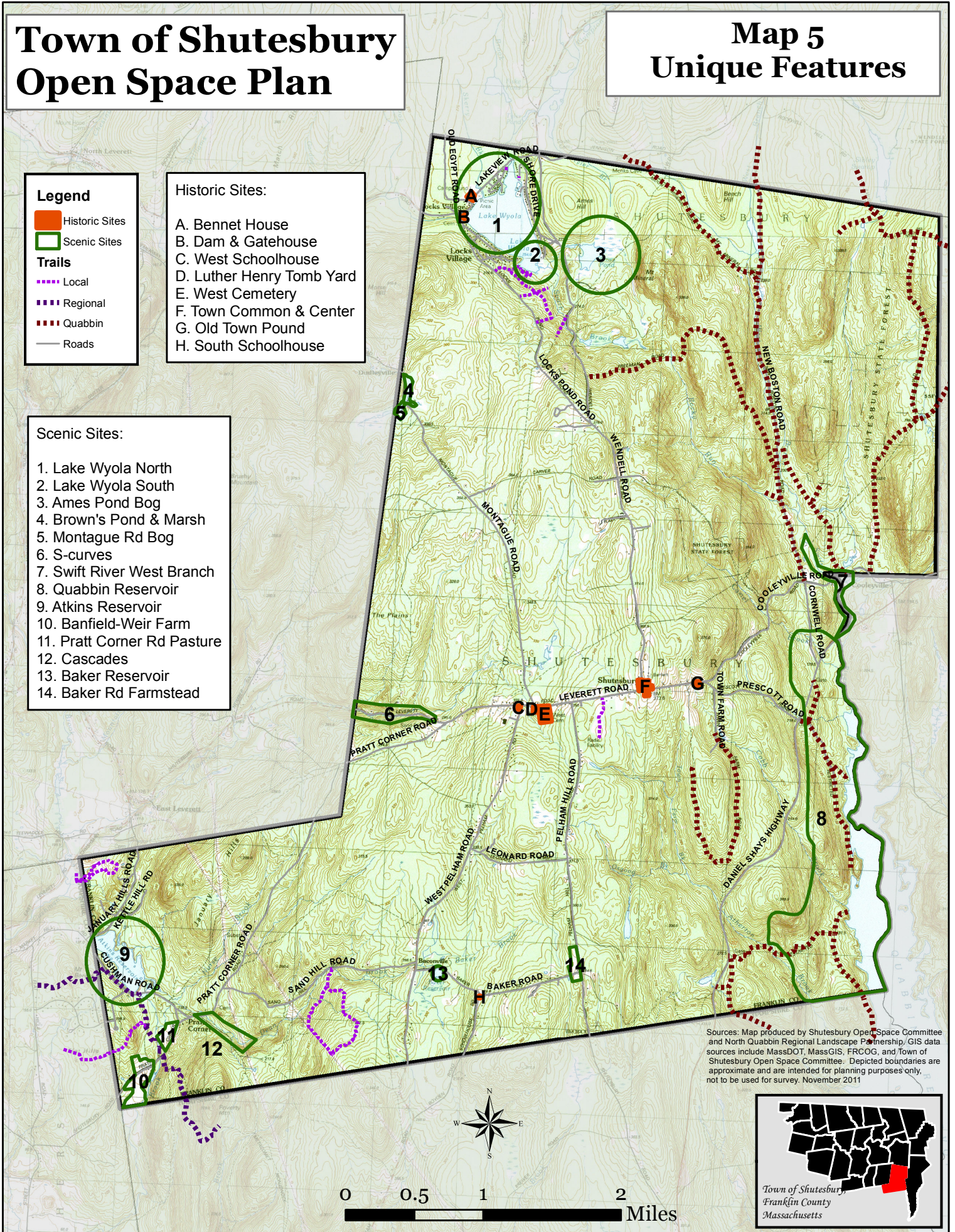
-  Historic Sites
-  Scenic Sites
- Trails**
-  Local
-  Regional
-  Quabbin
-  Roads

### Historic Sites:

- A. Bennet House
- B. Dam & Gatehouse
- C. West Schoolhouse
- D. Luther Henry Tomb Yard
- E. West Cemetery
- F. Town Common & Center
- G. Old Town Pound
- H. South Schoolhouse

### Scenic Sites:

- 1. Lake Wyola North
- 2. Lake Wyola South
- 3. Ames Pond Bog
- 4. Brown's Pond & Marsh
- 5. Montague Rd Bog
- 6. S-curves
- 7. Swift River West Branch
- 8. Quabbin Reservoir
- 9. Atkins Reservoir
- 10. Banfield-Weir Farm
- 11. Pratt Corner Rd Pasture
- 12. Cascades
- 13. Baker Reservoir
- 14. Baker Rd Farmstead



Sources: Map produced by Shutesbury Open Space Committee and North Quabbin Regional Landscape Partnership. GIS data sources include MassDOT, MassGIS, FRCOG, and Town of Shutesbury Open Space Committee. Depicted boundaries are approximate and are intended for planning purposes only, not to be used for survey. November 2011

