





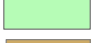


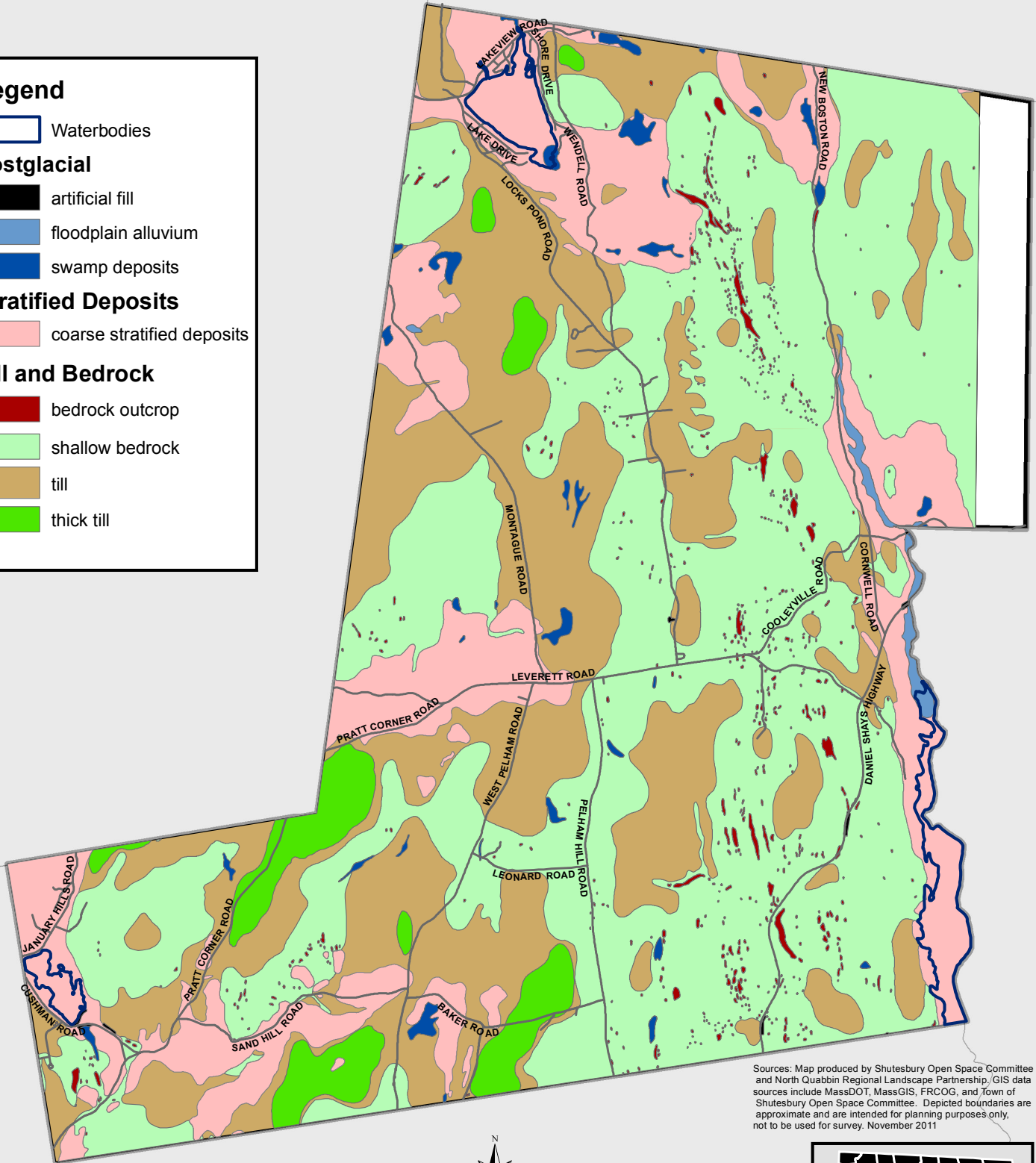


# Town of Shutesbury Open Space Plan

# Map 4B Surficial Geology

**Legend**

-  Waterbodies
- Postglacial**
-  artificial fill
-  floodplain alluvium
-  swamp deposits
- Stratified Deposits**
-  coarse stratified deposits
- Till and Bedrock**
-  bedrock outcrop
-  shallow bedrock
-  till
-  thick till



Sources: Map produced by Shutesbury Open Space Committee and North Quabbin Regional Landscape Partnership. GIS data sources include MassDOT, MassGIS, FRCOG, and Town of Shutesbury Open Space Committee. Depicted boundaries are approximate and are intended for planning purposes only, not to be used for survey. November 2011

