

TA Report 5.14.10

SHUTESBURY FARMERS MARKET will begin May 22, 2010. The hours are, **Saturday, 8:30am until noon.** (See you next WEEK!)

FIRE STATION GASOLINE LEAK On Monday four concrete circles were cut in the floor of the fire station, two in the large southern bay and two in the northern bay where the rescue vehicle is housed. Early Tuesday Seaboard Drilling showed up with the remote controlled Geoprobe and an enormous drilling rig. The Geoprobe is compact and was driven into the fire station bays by remote control.

PICTURE of Geoprobe-

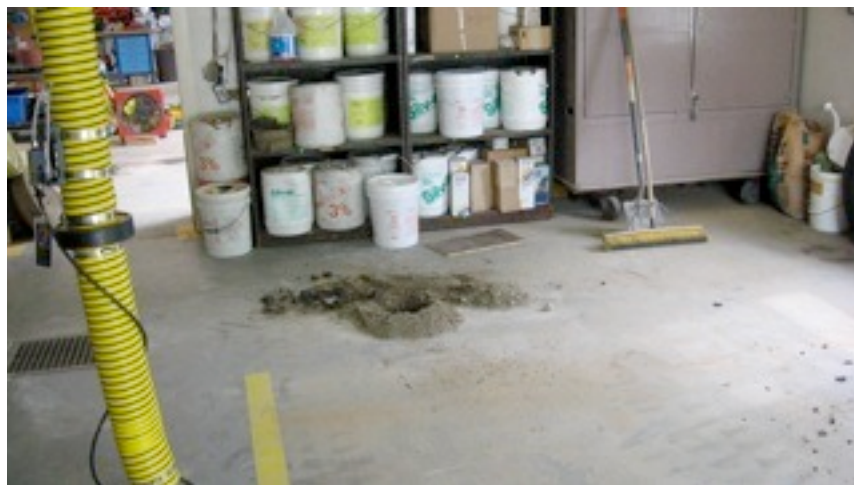


Three samples were dug into the floor of the fire station. The one near the ball field hit ledge at three feet and was fine. The second in the large bay was okay. The sample dug in the north rescue bay was not good at a depth of 6-8 feet. This is near where the tank had been removed and pump is suspected of leaking.



The crew from Seaboard Drilling Company worked with our environmental scientist, Joel Harris, to take numerous samples at different depth. We were surprised to be able to drill to 14' without hitting any bedrock. We hit bedrock at 2 other locations during the big dig and there have been many stories of bedrock being hit over the years and during the LCP road project. Five samples were taken and did prove to show contamination at 6-8'.

The next hole, farther to the east showed little sign of gasoline. The samples were taken in two foot long steel cylinders that were pounded into the ground. The cylinder opened lengthwise and samples were carefully removed,





Recorded and stored in glass containers with Teflon lids.

Test results are still in draft form. Next week discussions will begin between DEP, OTO and the town about what all these results mean and what is the most appropriate next step. There are strategies to remove the soil from underneath the northwest section of the fire station and repouring the

the concrete floors afterward.

The Selectboard is determined to accomplish this task for the best long term solution and highest safety levels, not leaving this mess to future generations.

FIRE DEPT. APPOINTMENT – Welcome to Colette Schmidt! We are so appreciative of our fire department and all the hard work they do, weekly trainings, testing, midnight and daytime- around the clock responses for medical and fire calls. So glad to have new people interested. If you are interested in joining the fire department call Fire Chief Walter Tibbetts at 259-1211.

HIRED NEW CUSTODIAN- Welcome to Brent Allard! We are happy to have him on board. He is jumping right in helping us catch up after months of the position being left unfilled. He is learning about every inch of our buildings and helping us understand the science of composting.

DOG BEHAVIOR- There is a leash by-law in Shutesbury. If your dog runs loose in the neighborhood he can be a nuisance to others, even if he is the sweetest dog in the world at home. Loose dogs often get in the road and sometimes are hit by cars. No one wants that to happen. Loose dogs bark at people, jump up and frighten people. These are all reason for owners to be responsible for their dogs, aware of their whereabouts at all times. Please take a minute, dog owners, and reflect on your family's daily dog routine. Keep in mind your dog's safety and being neighborly at the same time.

TRASH BAG PICK UP Saturday, 5/15, from 9:00am to noon at TOWN HALL

TRANSITION TOWN, A presentation by Tina Clarke will be held at the Shutesbury Town Hall, May 20, Thursday, 7-9pm.

Enjoy graduation-

Becky Torres,
Shutesbury Town Administrator
townadmin@shutesbury.org
413-259-1214