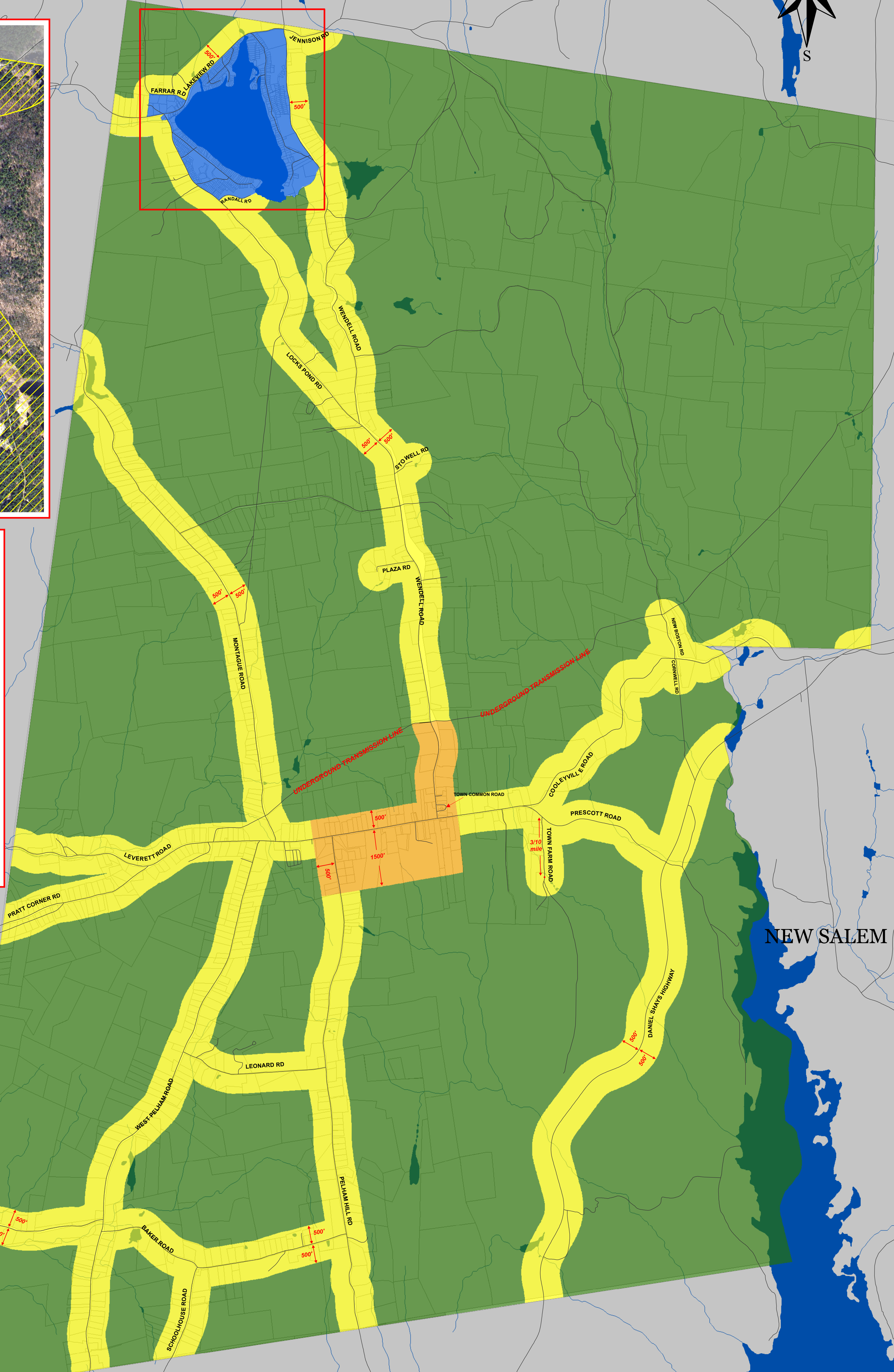
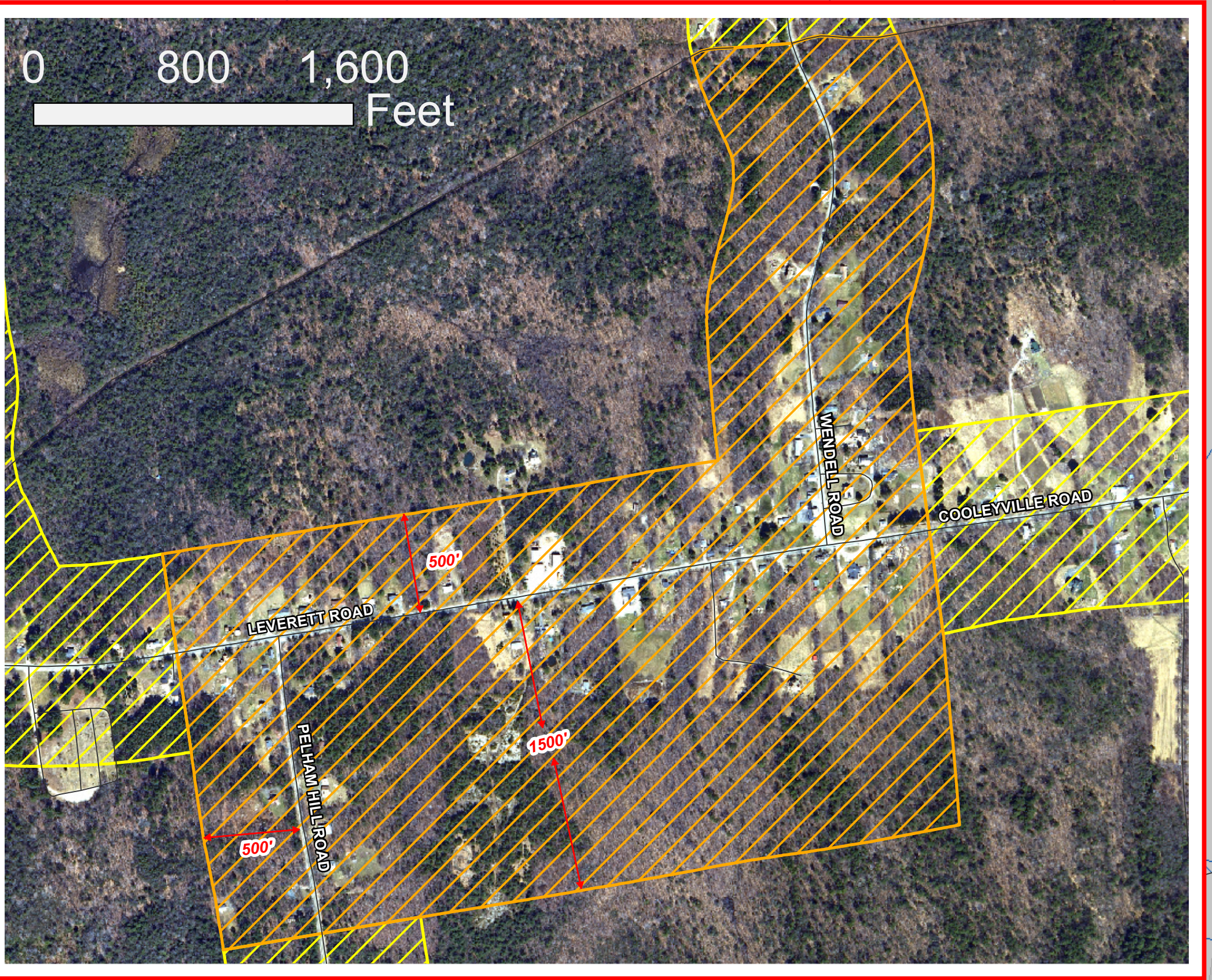
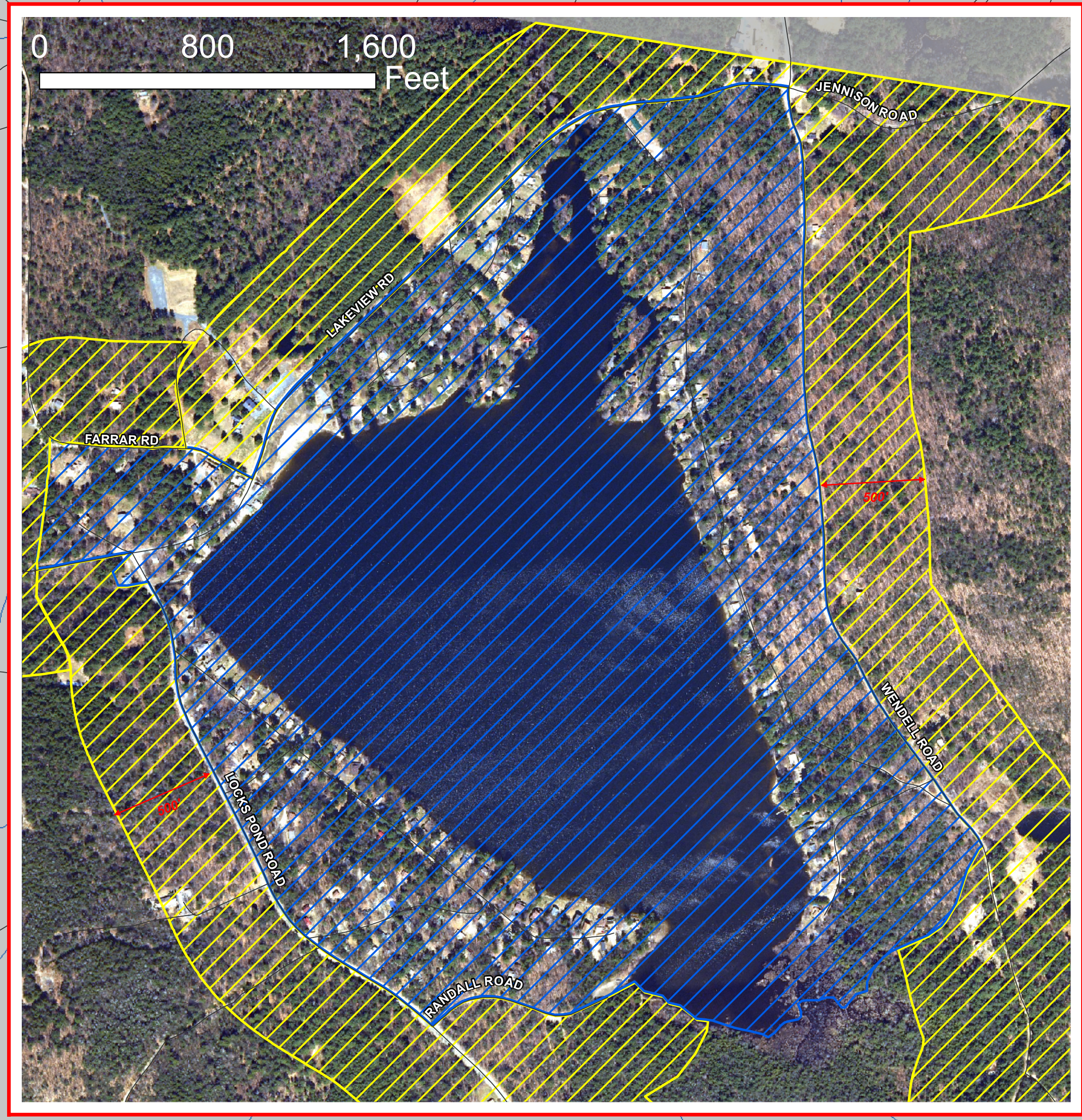
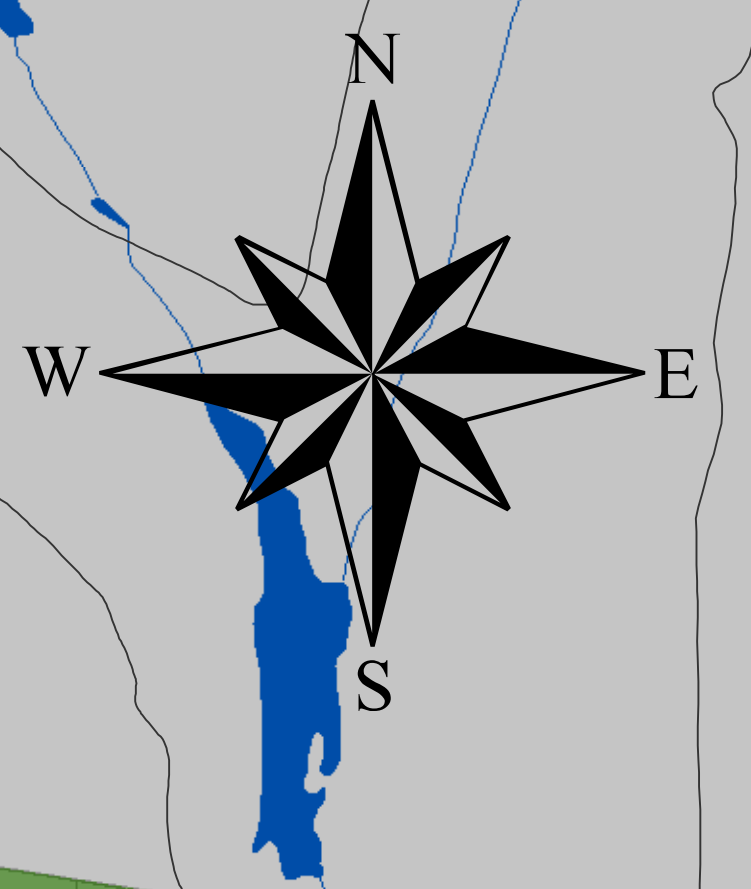


Zoning Map of Shutesbury, Massachusetts

WENDELL



NEW SALEM

AMHERST

| Legend | | Zoning District | |
|--------|-----------------|-----------------|------------------------------------|
| | River, Stream | | Forest Conservation District (FC) |
| | Water | | Roadside Residential District (RR) |
| | Road | | Town Center District (TC) |
| | Parcel Boundary | | Lake Wyola District (LW) |

FRANKLIN REGIONAL COUNCIL OF GOVERNMENTS
 Main Office: 413-774-3167
 425 Main Street
 Greenfield, Massachusetts 01301

Map Sources:
 Map Produced by the Franklin Regional Council of Governments Planning Department. GIS data sources include the FRCOG Planning Department, the Massachusetts Highway Department and MassGIS. Digital Data obtained from MassGIS represents the efforts of the Massachusetts Executive Office of Environmental Affairs and its agencies to record information from the sources cited in the associated documentation. EOGA maintains an ongoing program to record and correct errors in the GIS data that are brought to its attention. The project validity of any uses of the GIS data are brought to its attention. EOGA maintains records regarding all methods used to collect and process these digital data and will provide this information on request. Executive Office of Affairs, MassGIS EOGA Data Center, 251 Causeway St., Suite 900, Boston, MA 02108-1000.
 Note: Depicted boundaries are approximate and are intended for planning purposes only.
 Proposed zoning provided by town of Shutesbury and digitized by FRCOG Planning Staff.
 Parcel data provided by town of Shutesbury assessor department. Road, water and town boundary data provided by MassGIS.

