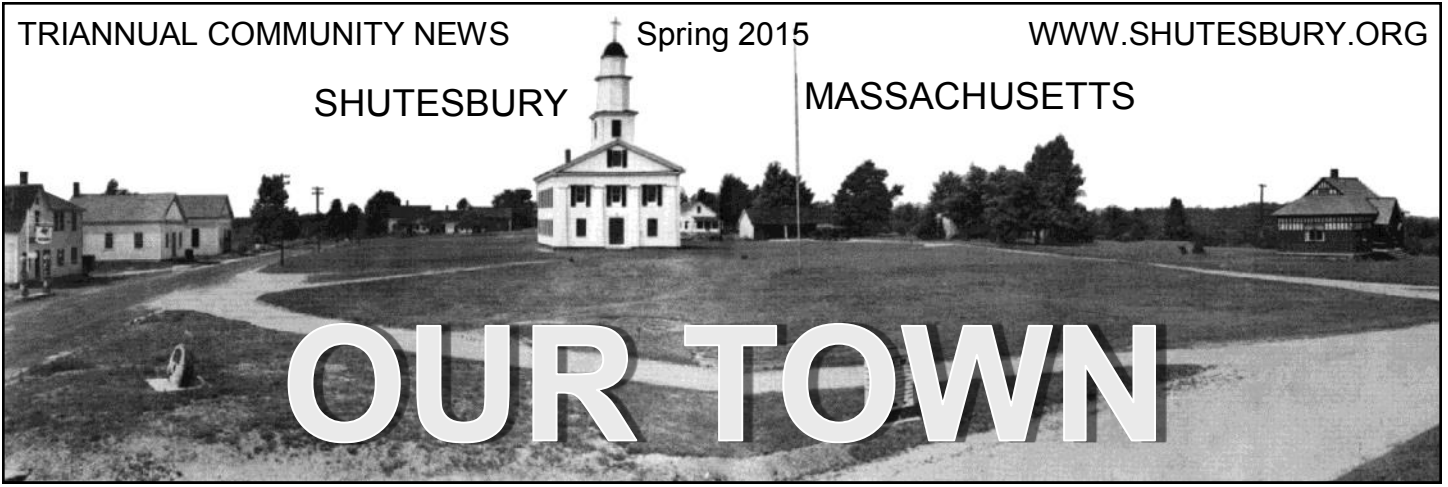


SHUTESBURY

MASSACHUSETTS



OUR TOWN

☞ This is Part One of two town mailings you should receive in April. It does not include the budgets or warrant for Annual Town Meeting. They'll arrive soon! ☞

Spring tidings from your Select Board

By Elaine Puleo, April Stein and Mike Vinskey, *Shutesbury Select Board*

After a long and challenging winter, spring has finally arrived! Over the past months, the Select Board has continued to meet and work with other committees and Shutesbury citizens who attend our meetings.

Some of the issues that have come up over the past months have been broadband, road conditions (particularly our beloved dirt roads), possible changes in our regional school agreement, the assessment method used to determine how much our share of the regional school budget is, among others.

Our Broadband Committee has worked diligently these past months choosing their recommendation for **how to get Shutesbury wired**. The Select Board endorsed their choice of Wired West, a cooperative of 32 towns in Western Massachusetts who will work together to provide the "last mile" of fiber optics to everyone.

The **road issues** continue to be discussed at our meetings with concerned citizens and our Highway Superintendent, **Tim Hunting**. A future meeting is being planned to discuss this more thoroughly (that is, after the mud season is over!).

The **proposed changes in our School Regionalization agreement** have been **tabled** by the Regional School Com-

The Select Board will host two information sessions at Town Hall prior to the May 2, 2015 Annual Town Meeting:

- Wednesday, April 22, 3-5pm
- Wednesday, April 29, 7-9pm.

mittee for the time being. The assessment method that guides how much each community pays toward the Regional School budget continues to be discussed in Shutesbury, and will be looked at in more detail.

And for fun, the Select Board hosted our first annual **Selectboard Spring Soup and Salad Supper** in the function room at the Shutesbury Athletic Club.

The Annual Town Meeting is May 2, 2015 at the Shutesbury Elementary School gym. In preparation for the town meeting, we are working with the finance committee, town administrator and town moderator to create the warrant and budget articles for the towns-

people to vote on.

There will be informational meetings, in addition to our regularly scheduled (and posted) Selectboard meetings. These forums will be Wednesday, April 22 from 3-5pm, and Wednesday, April 29 from 7-9pm. These will be held at the Town Hall.

The regional municipal broadband network solution

By Becky Torres, *Shutesbury Wired-West Delegate* and Craig Martin, *Shutesbury WiredWest Alternate*

In 2011 and 2012, Shutesbury voted to join WiredWest – a cooperative of municipal light plants made up of 45 communities which are authorized by special legislation to finance the

See Broadband, page 9

All are invited by the Shutesbury Select Board to join in a Social Hour to Meet the Candidates on the Ballot for the Election on May 2 and

Thank those Volunteers who are leaving committee participation after more than 10 years of service to the Town.

Come to the Shutesbury Elementary School, 4-5:30pm on Sunday, April 26. There will be refreshments.

Messages from the Town Clerk

Leslie Bracebridge, *Town Clerk*

Office Hours: 9am – 1pm Monday through Thursday; call 413-259-1204 for special appointments.

Saturday, May 2, 2015 is the date of Shutesbury's **Annual Town Meeting and Election** of officers. The polls will be open at the Shutesbury Elementary School at 23 West Pelham RD from 8 am – 2pm. Annual Town Meeting will begin at 9am.

Saturday April 11 was the last day for new voters to register to vote for the Annual Town Election. Once you have registered to vote in a Massachusetts town, as long as you remain at the same address and continue to complete and return your street list form each January, your name will remain on the voter registration list.

Visit the Secretary of the Commonwealth's website: <http://www.sec.state.ma.us/VoterRegistrationSearch/MyVoterRegStatus.aspx> to learn about your voter registration status, who your representatives are, links to your representatives' websites, how to contact them, and other elections-related information. If you have a zip code other than 01072 and your zip code doesn't work for your name, try putting in 01072.

You may find it easier to go to the Town Clerk's page at www.shutesbury.org and click on the link to the Secretary's page. You may also call the Town Clerk's number above anytime, if you would like to check your voter registration status, to ask questions about registering to vote, or about elections in general.

Absentee ballots are available at the Town Clerk's Office for any voter who will be absent from Shutesbury, or who has a physical disability or a religious belief that prevents the voter from being present during polling hours. Applications for absentee ballots must be made in writing, and include the voter's name, voting address, the address to which the ballot should be mailed, and the voter's signature. Please allow plenty of time for mail delivery of an ap-

These positions will appear on the Annual Town Election Ballot:

Board of Health: two 3-year positions
Cemetery Commission: one 3-year position
Library Trustees: two 3-year positions
Planning Board: two 3-year positions and one 2-year position

School Committee: two 3-year positions
Select Board: one 3-year position
Town Clerk: one 2-year position

plication and the ballot back and forth. A voter may also **absentee vote in person** at the Town Clerk's office until noon on Friday, May 1.

The only way to vote on Town Meeting warrant articles is to be present at the meeting. We hope you will be able to attend.

Key results of both the election and the town meeting will be put on the Town Clerk's answering machine (413-259-1204) and posted on the front door of Town Hall at the end of the day. As soon as the first draft minutes and election results are prepared, they will be sent to the town website (www.shutesbury.org.)

The 2015 dog re-licensing period is July 1, 2015 - June 30, 2016. A re-licensing form is available at the www.shutesbury.org website. In that I will retire on May 9, I cannot say for certain that dog re-licensing forms will be sent town-wide in a June 2015 mailing. Watch for the mailing, get a form on the Dog Officer or the Town Clerk web pages at www.shutesbury.org, stop by Town Hall to pick up a form, or call the town clerk to request a form be sent.

Check now to make sure that your dog is up to date on its rabies vaccination, as is required in order to re-license. **Thank you for licensing your dog.**

Saying goodbye is never easy. Please know that I am very grateful for the many people who have made my 20 years as town clerk fly by. I will remain active on the Historical Commission and will become more active with our Council on Aging. I hope to see many of you in those capacities and otherwise as a citizen-at-large! I will miss my work very much, and more so, miss everyone who has touched my life. It's certainly felt like family, so I part, "With love, Leslie."

Note from the Town Collector

Ellen McKay, *Town Collector*

Dear Shutesbury taxpayers,

Happy spring! Now that the warmer weather is approaching, we are approaching the end of fiscal 2015 and the Town Meeting for fiscal 2016.

My office hours are Monday, Tuesday, Wednesday and Friday from 9am – Noon and Thursday from 8-11am. Should you need to see me and these times are inconvenient, please call and we can arrange a better time to meet.

Due to the time it takes for mail delivery, it is imperative that you **PLAN ACCORDINGLY** when mailing your payments. Under Mass. General Law, we do NOT use the postmark for date of payment but rather the date of actual receipt. You should mail bills at least **ONE WEEK** before they are due to insure that they are received before the due date.

If you use on-line banking from your bank (not the Town's system), please be aware that the bill will come to this office for processing from the lockbox because it is not accompanied by a copy of the bill. PLEASE make sure the memo information is correct and does not reflect information from previous payments

See Collector, page 4

Our Town, published three times a year in January or February, April, and August or September, is supported by tax dollars. We welcome news from Town of Shutesbury departments, boards, and committees, and from individuals and groups about local projects, activities, or special events of benefit to our community. Submissions promoting the sale of goods or services for private profit cannot be accepted.

Janis S. Gray, *Editor*
Linda Avis Scott, *Town Hall Liaison*



PRINTED ON RECYCLED STOCK
30% POST CONSUMER WASTE

Change in trash bag distribution policy

By the Recycling and Solid Waste Committee

In the past we have distributed trash bags through May and the first three weeks of June, beginning at Town Meeting. Unfortunately, many residents don't pick their bags up during this distribution period and come to Town Hall to get bags later in the summer or even into the fall, interrupting the work of the Town Administrator and many other town employees and making it necessary for them to haul boxes of bags from the shed at the school, where they are stored, to Town Hall.

In response to their request for a change in policy, the RSWC has added several additional pick-up dates through the entire month of June this year. Bags will not be available at Town Hall during the two-month distribution period. In addition, **anyone picking bags up at Town Hall between July 1st and October 6th will receive a maximum of 40 bags, not 50.** After October 1 until May Town Meeting, a prorated bag amount will be issued. The prorated distribution is the following:

After Oct 6th – 30 (3 packs)

After Dec 15th – 20 (2 packs)

After Feb 10th – 10 (1 pack)

Please pick up your trash bags during the months of May and June (see the trash bag distribution schedule in this newsletter) so that our full-time town officials and staff can focus on their work, and so you can get your full allotment.

Many hands were on deck at Town Hall!

The Winter 2015 *Our Town* reached you in February thanks to **Susan Millinger, Marilyn Tibbetts, Mike Vinskey, Pat Vinskey and Catherine Youngen**, who joined Town Administrator **Becky Torres** and Administrative Secretary **Leslie Bracebridge** in folding, stuffing, sealing and labeling the newsletter for the mail.

If you would like to join a "folding party" for any future newsletter or other municipal mailing, please call our new Administrative Secretary, **Linda Avis Scott**, at 413-259-6550 to be added to her list of folks to call.

Shutesbury Bulky Waste Day Saturday June 6! Changes to Bulky Waste Day—Please Read Carefully

Saturday, June 6 is Bulky Waste Day at the Highway Department from 10am to 2pm for Shutesbury residents. Bring items that are too large for the trash, such as construction waste, mattresses, electronics, etc. etc. We do charge enough to cover the cost of disposing of these items, so bring some cash or your check book. **DO NOT** bring hazardous waste or florescent bulbs to Bulky Waste Day.

We Need Bulky Waste Day Volunteers!

Please give the RSWC a hand that day if you can. We could use some strong volunteers to help things run smoothly at BWD. We had several terrific volunteers in October, and their help made a huge difference. Many hands make light work! If you would like to volunteer, contact **Gary Bernhard** at 413-259-1235 or bernhard@www.umass.edu.

Changes That Will Take Effect This Year

- ◇ All TVs (CRTs and flatscreens) will be \$20.00. Computer monitors (CRTs and flatscreens) will be \$10.00. All other electronics are free.
- ◇ All clean, white Styrofoam will be collected at no cost.
- ◇ Bulky rigid plastics (see below) will be collected separately and recycled at the Materials Recovery Facility in Springfield. We will be charging between \$2 and \$5, depending upon the amount, to help cover the cost of the hauling.

Acceptable Bulky Rigid Plastics

- Buckets *with* metal handles
- Milk/soda crates
- Laundry baskets
- Lawn furniture
- Landscape & microwave trays
- Totes—any size (*with metal*)
- Toys & Playhouses
- Pet carriers
- Coolers
- Shelving
- Closet organizers
- Dish drainers
- Flower pots (no soil)
- Traffic signs
- Recycling bins
- Garbage cans (any size)
- PVC & PET blister pack

- 5 gallon water bottles
- Plastic Auto Parts
 - Side-view mirrors
 - Headlights and taillights
 - Bumpers
 - Grills
 - Hubcaps

Not Acceptable Bulky Rigid Plastics

- PVC Pipe/Tubing
- Vinyl Siding
- Plastic film (grocery bags, etc.)
- Flexible Water Hoses
- Flexible flower pots
- Other recyclable plastics
- Oil/gas/chemical containers

Free by the Side of the Road

The week before each Bulky Waste Day is "Free-By-the-Side-of-the-Road Week." If you have items that you no longer need but might be useful to others, place them on the roadside during the week beginning Saturday May 30th.

NOTE: Items placed on the roadside that are NOT picked up before Bulky Waste Day must be removed at the end of the week. Put them in trash bags or bring them to Bulky Waste Day. Last year Town Meeting passed a "Littering and Dumping Bylaw" that addresses items left by the side of the road longer than two weeks. The text of the bylaw is on the Town website, here: <http://www.shutesbury.org/bylaws>

NOTES FROM THE SHUTESBURY COUNCIL ON AGING (COA)

Senior Lounge Renovations

The Council on Aging (COA) wants to thank all the volunteers, Building Committee and Town Administrator whose hard work came together to make a wonderful renovated space known as the Senior Lounge. The COA is beginning to provide regular program activities in the newly renovated space and welcomes all participants. Check out the different activities below.

Potluck luncheons

Please join us for wonderful food, good conversation, and an opportunity to meet new neighbors. We meet in the Senior Lounge on the first Tuesday of each month. If you would like to come contact **Marilyn Tibbetts** at 413-259-1976 to let her know what you might bring. Our next luncheons are May 5 and June 2, then we will take a break until September 1. Everyone is welcomed.

Coffee drop-in program

Every Monday from 10am to 12pm we have coffee and home made sweets

for anyone who would like to come by. The last Monday of each month **Sharon Raymond** will coordinate a special craft project. The Monday morning drop in will continue through May. Stay tuned for a new time and day of the week after May.

Ongoing programs

Tai Chi every Wednesday night for one hour starting at 7:10pm. Contact **David Dann** at 413-259-1554 for more information. Tai Chi classes will end May 27.

Bridge the second and fourth Thursdays starting at 6:30pm through May. Beginners especially welcomed. Contact **Kate Hersey** at 413-259-1261 for more information. Bridge will continue after May on a different time and day.

Special programs the third Thursday of most months. May 21 the Historical Commission will be presenting a special program about the Ames Family, followed by a hike on June 13 around Ames Mill Pond. See insert for more info. Our special programs will resume again in the fall, stay tuned.

MED-RIDE Program

The successful transportation program will be expanding its service beginning in July to Hampden County. Rides are arranged by appointments. Please note we have a new phone number, 413-259-3796.

This volunteer program provides rides to medical and dental appointments for Shutesbury seniors age 55 and older who are unable to drive or have no means of transportation anywhere in Hampshire, Franklin and now, beginning July 1, Hampden County.

We are also looking to recruit a few new volunteer drivers. Please call us if you are interested. The Med-Ride program is co-directed by **Linda Avis-Scott** and **David Dann**.

Outreach effort

The COA is discussing how it can reach isolated seniors and keep folks connected. We welcome all ideas and input. Please let us know your thoughts and ideas by contacting us at 259-3796 or touching base with one of our committee members. Guests are always welcome to attend our meetings. Usually the second Wednesday of each month at 5:30pm.

Collector, *continued from page 2*

(i.e. listing real estate or excise bill numbers from previous years or an incorrect type of bill). Since your bill payment is NOT an automatic transfer into the Town's bank account, you must PLAN ACCORDINGLY when authorizing the payment. DO NOT set up the payment on the due date, it won't get to the Town until almost a week later which will result in fees and interest.

The company handling our lockbox has been changed and so we have a new address. **Please make sure you have changed the address on all your on-line banking checks.** The previous address in Greenfield has been closed. The new address is: Town of Shutesbury, Department 3520, PO Box 4110, Woburn, MA 01888-4110.

Your fourth quarter real estate taxes are due May 1. I urge you to pay these bills promptly as the next bill you will be receiving is a demand that will cost you an additional \$ 5.00 plus interest. **If you need to set up a payment**

arrangement on your bill, please contact me as soon as possible.

Although interest will accrue on any overdue portion of the bill, you will avoid the additional interest and any collection procedures beyond the demand that will accrue should you leave the entire bill unpaid.

Don't forget to contact the Board of Assessors if you no longer have a vehicle on which you have received a motor vehicle excise tax bill. All bills should be paid in full before you apply for abatement. If this is not done and the bill becomes overdue with additional fees and interest before abatement, these must be paid along with any outstanding balance due on the bill after abatement.

Payment of all types of bills MUST be received on or before the due date which is clearly marked on the bill. Please make note of these dates and make your payments accordingly. Always open all envelopes you receive from this office immediately on receipt. The bill you think is a real estate bill (and paid by your bank) may be an excise tax bill for which you are re-

sponsible.

Be sure to notify this office if you change your mailing address to avoid a delay in delivery of your mail which is returned to me for forwarding. This can take as much as two weeks which reduces the time you have to pay the bill on time.

Should a demand bill be issued on a motor vehicle excise tax, the law provides 14 days for receipt of payment before a warrant for collection is issued to the Deputy Collector. This results in at least \$ 22.00 in additional fees. Upon mailing of the demand bills, payment of the original bill will NOT be accepted and checks made out in the incorrect amount WILL be returned to the sender.

Some of you have been unable to pay your bills on-line. Once a bill is overdue, it is automatically deleted from the system and can't be paid on-line until the demand is issued. If the bill is on warrant, it cannot be paid on-line except through the Deputy Collector.

Have a good spring.

Community Preservation Committee recommends projects for Town Meeting

The Community Preservation Committee (CPC) voted unanimously on April 2, 2015, to recommend that Annual Town Meeting approve three proposed Community Preservation funded projects.

The detailed proposals are on the CPC web page at Shutesbury.org. (see Offices & Committees)

- Cemetery Commission: *West Cemetery* – to preserve, protect and restore Shutesbury's historic gravestones. \$25,000
- Old Town Beach Improvement Committee – to create a small waterfront park at Shutesbury's *Old Town Beach*. \$5,000

- Conservation Commission: *Top of the lake* – to create a passive recreation area with picnic table and kayak/canoe launch on town owned waterfront property. \$4,100

Each applicant completed a thorough application and review process. Each submitted a preliminary Determination of Eligibility application. On December 4, 2014, Shutesbury's CPC, its members representing the Select Board, Conservation Commission, Historical Commission, Community Housing, Open Space Committee, Finance Committee, Planning Board, and the community-at-large, determined that the three proposed projects are eligible to receive Community Preservation funds.

Each applicant then prepared a full application with a project descrip-

tion, specifications, and budget. The CPC convened an open meeting for an initial review and discussion of the proposals in January.

At the February CPC meeting, each applicant presented its proposal and answered the CPC members' questions. At the CPC's Annual Public Hearing on March 19,^h each applicant again presented and answered follow-up questions from interested Shutesbury residents.

After completing its review and evaluation process, the CPC members voted unanimously on April 2, 2015, to recommend funding the three projects. Each project is financially and administratively feasible, has other sources of funding, includes significant in-kind volunteer contributions, and has support from other town boards or committees.

Each project will provide a positive impact to the community and a step toward achieving long standing, but unfunded, priority goals for Shutesbury. The total appropriation, should the Annual Town meeting approve all projects, is \$34,100 leaving an increase of approximately \$10,000 in additional CPA town funds through June 30, 2016.

The CPC encourages you to attend Annual Town Meeting on Saturday, May 2. The CPC thanks all those who contributed to these proposals and who have committed to their implementation.

Statements from candidates for Select Board

Michael DeChiara and Melissa Makepeace-O'Neil filed nomination papers in March for one three-year position on the Select Board. Barring unforeseen write-in votes, these are the only candidates for this position in the 2015 Annual Town Election of Officers. Each candidate was invited to submit a statement of no more than 125 for to this newsletter.

Space in *Our Town* for campaign statements is available to all candidates for contested seats, including known write-in candidates. (For the purposes of this newsletter, a known write-in candidate is an individual who has notified the Town Clerk in writing that he or she is a write-in candidate for a particular office.)

The Town of Shutesbury does not endorse any candidate. Candidates have provided all information appearing in statements. *Our Town* is not responsible for proofreading or correcting these statements.

Michael DeChiara
56 Pratt Corner Road
413-259-1059
mdechiara@gmail.com

Melissa Makepeace-O'Neil
315 West Pelham Road
413-256-0312
mmakepeaceoneil@verizon.net

Shutesbury is a special place – a small town filled with people who care. The Select Board's job is to help the town function well and to plan for a fiscally sound and vibrant future. Together we can meet our needs and achieve our hopes. I come prepared to serve. I have experience with town government having served nine years on School Committee; I also served on the Zoning Board of Appeals and Broadband Committee. Select Board members must also be Shutesbury's ambassadors to other communities and the state. I have represented Shutesbury on many town committees that worked with our neighboring towns, and I have strong working relationships with our legislators. If elected, I will work for the best interests of Shutesbury. Learn more: MichaelForSelectboard.info

Shutesbury has been my home for the last 39 years. I have a degree in accounting and currently work as the Admission Information Coordinator in the Admission Office at Amherst College. I am a member of the Council on Aging and volunteered to help with the Senior Lounge renovations. I hope to serve our town by carefully considering all points of view, making common sense decisions and standing for fiscal responsibility. I will consider the short and long-term implications of issues facing our town. I will make decisions based upon facts, figures, available information and reason. I look forward to bringing a creative approach to problem solving. I will happily work with town government and the community. to help create a bright and stable future for Shutesbury.

Water Resources Committee monitoring well update

At the 2014 Annual Town Meeting, Shutesbury voters approved money for the installation of a series of groundwater monitoring wells intended to provide data on both seasonal and long-term changes in the drinking water resource upon which virtually all town residents depend.

In late August 2014, four bedrock wells, plus four companion shallow wells, were drilled at strategic locations along the north-south ridge that runs through the town. The wells were professionally installed by Cushing & Sons, under the watchful eye of the town's Water Resources Committee (WRC). Three of the bedrock wells were drilled to 100-foot

See Wells, page 6

Wells, continued from page 6

depth (deep enough to monitor changes in groundwater levels), and one was drilled to 300 feet (to simulate an “average” drinking water well in town). The shallow wells were drilled just to the top of the bedrock layer, and ranged in depth from four to 25 feet. Their main purpose is to monitor changes in the glacial aquifer, which ultimately recharges our bedrock aquifer. Information on the eight wells is presented in the table at right.

All wells were equipped with automatic data loggers, set to measure and store water level readings at regular intervals (e.g., every 10 minutes). Since early September, these data loggers have been recording water levels in the eight wells. Additional direct measurements have been made by WRC members and a Mt. Holyoke College student who has been collecting data on Shutesbury’s water resources as part of a senior thesis project.

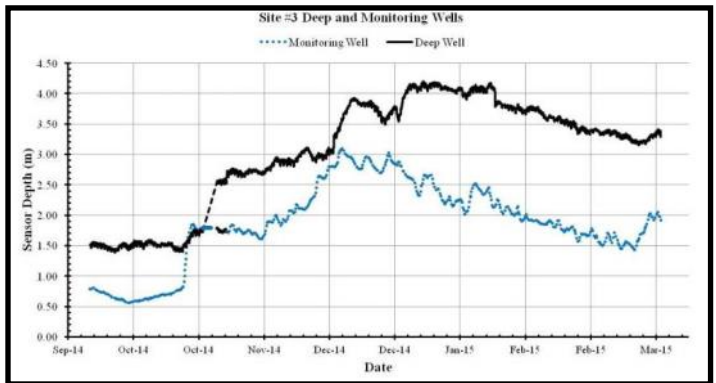
While it’s too soon to determine if any clear trends exist in the water level data, a few “observations” can be made:

1. Despite the relatively low flow rates in the deep wells, levels rose steadily in all of them in the weeks following the drilling.
2. Shallow and Deep wells show similar patterns in water level changes over the past six months (see graph for Well Site #3).
3. Water levels rose last summer and fall (in response to autumn rainfall), fell during the long cold winter and are expected to rise again with snow melt and spring rains.

Recently, analyses were conducted on each well to provide some baseline data on various water quality parameters. Water level monitoring will continue into the future, and periodic water quality analyses will be conducted when the

Site #	Well Type	Depth (feet)	Flow (GPM)	Depth to Water ¹ (ft)
1	Deep	100	0	25.0
1a	Shallow	25	--	8.3
2	Deep	100	4	13.8
2a	Shallow	25	--	12.4
3	Deep	300	2.25	61.9
3a	Shallow	13	--	12.3
4	Deep	100	0.25	12.7
4a	Shallow	4	--	--

¹On September 24, 2014



need and opportunities arise. Well #3 is also being monitored (on a monthly basis) by the State Geologist and the USGS.

Contact the Conservation Commission



BEFORE starting your project

With the arrival of warmer weather, many town residents start to think about construction or landscaping projects. New construction, tree removal, grading or excavation within 100 feet of a wetland must be reviewed by the Conservation Commission before work begins. This includes almost all work done around Lake Wyola.

Keep in mind that the Commission must sign off on all Building Permit Applications whenever digging is required. At the minimum, a site visit is required prior to our sign off. If wetlands are nearby, the process is more

complex and can take several weeks. Don’t wait till the last minute to contact us. A link to our wetlands brochure can be downloaded from the Commission’s page on the town website: <http://www.shutesbury.org/concom>

The Commission wants to help property owners proceed with their projects while simultaneously protecting the valuable wetland resources that benefit all of us. Our knowledgeable clerk, **Linda Avis Scott**, can help you through the process. She can let you know what you need to do and how to go about it. Here’s how to start:

Leave a message for the Commission at 413-259-3792 or concom@shutesbury.org

OR

Visit Town Hall during Scott’s office hours: Tuesdays and Thursdays from 10am to 12 noon

OR

Come to one of our meetings (from March to October, on the 2nd and

4th Thursdays at 7pm and from November to February, on the 2nd Thursday). It’s best to call first to get onto our agenda.

NOTE: We seek an additional member. Our meeting schedule is above. If you think you might be interested, come to one of our meetings to find out more. We would especially welcome someone with an engineering background or experience with road work.

The Shutesbury Conservation Commission

Union #28 Community Network for Children

The *Community Network for Children (CNC)* program is funded through the Massachusetts Department of Early Education and Care Coordinated Family and Community Engagement (CFCE) grant.

The CNC supports all families with children from birth through 3rd grade in

our school union.

Some programs for families include: weekly playgroups and story hours; parent/guardian workshops and events; opportunities to meet other families in our community; support in accessing child care and information regarding assistance paying for child care; information about children's development; new baby gift bags and home visits; and newsletters with current programs and events.

Our local CNC council assists in the oversight of the grant funds.

If you are interested in being on our mailing list to receive the newsletters,

Redeem coupon for a Welcome Baby Gift Bag!

The Union #28 Community Network for Children (CNC) would like to extend a welcome to your new baby with a free Welcome Baby Gift Bag. Your bag will contain books, health and safety items and valuable information about local services for you and your new baby.

Please call or email Gillian, CNC Coordinator, to arrange for a drop off at your home or to pick up your welcome baby gift bag at one of our local story hours or playgroups!

978-544-5157 or Budine@erving.com!

please call or email **Gillian Budine**, Coordinator, 978-544-5157 or Budine@erving.com.

See our newsletter here: <https://>

sites.google.com/site/

communitynetworkforchildren/

[newsletters](https://communitynetworkforchildren/newsletters) to get more information.

Community Clean-up Day: Saturday, May 16

Winter threw us some strikes but we're not out.

The Roadtown Roadside Clean-up Project is on for May 16, 10am-noon. It's a community team effort working in our neighborhoods to pick up trash alongside the roads.

There will be informational/organizing meetings (not more than an hour) at the following locations:

- Tuesday May 5, 7:30pm
Home of Clif and Arlene Read
18 Old Orchard Rd.

- Wednesday May 6, 7:30pm
Home of Savanna Ouelette and Katie Tolles
205 West Pelham Rd.
- Thursday May 7, 7pm
Home of Jaime and Chris Donta
204 Montague Rd.
- Saturday May 9, 10am
Town Hall

Spring forth to make a fresh start on May 16. Shutesbury needs you.

For more information:

Sally Fairfield sjmcfair@gmail.com

Susie Mosher sndmoes@verizon.net

Get connected through Nextdoor Shutesbury

Nextdoor Shutesbury is a non-municipal website and email exchange system for Shutesbury residents. People use it to exchange information, share recommendations, post about lost and found pets, and give away or sell their used belongings.

Just Google Nextdoor Shutesbury and you'll find the main sign-in or join page. If you have problems signing up, email **Paul Vlach**, a Nextdoor "Lead" at vlach@admin.umass.edu for help.

You must be a current resident of Shutesbury, and join as a single person (but you can mention your hobbies, business, or organizational ties). You can send invites to friends, neighbors and family residents, so each of you see the info at your own convenience. You can get an email about every posting; or you can get a "digest" format, which is sent sent less often.

There's a website where you can browse past information on plumbers, electricians, contractors, etc.

Join the 407+ Shutesbury members today.

You can also choose to share info or inquiries with more than 500 members in the neighboring High Point area or Amherst, and a growing number in Pelham.

Your profile info is automatically restricted to those neighboring groups, and you can limit what Shutesbury people can see, as well.



The M. N. Spear Memorial Library

10 Cooleyville Road
413-259-1213; www.mnspear.org
Mary Anne Antonellis, *Director*

Hours

Monday 11am-1pm and 3-6pm
Tuesday 3-7:30pm
Wednesday 11am -1pm and 3-6pm
Thursday 3-7:30pm
Friday 3-6pm
Saturday 10am-1pm
Sunday 3-6pm

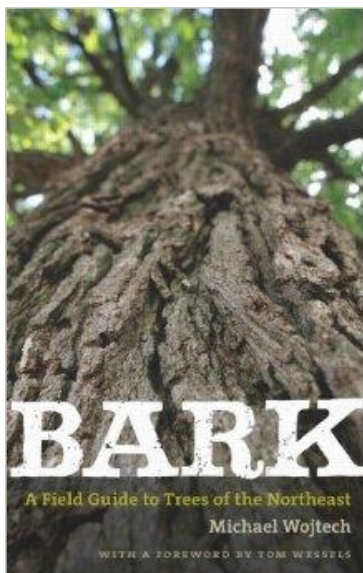
The Library's collection includes approximately 12,000 items, including books, audiobooks, DVDs, music CDs, and magazines. New items are added every week.

Our collection includes many popular contemporary items such as books you might see on the New York Times or New England Independent Booksellers best sellers lists. These items tend to be in high-demand and are rarely on our shelves. But they are often accessible in a week or two if one places a hold in the online catalog.

Bookmarks with instructions for logging into your account and placing a hold are available at the library. Library staff are also happy to place holds for you.

NEW!

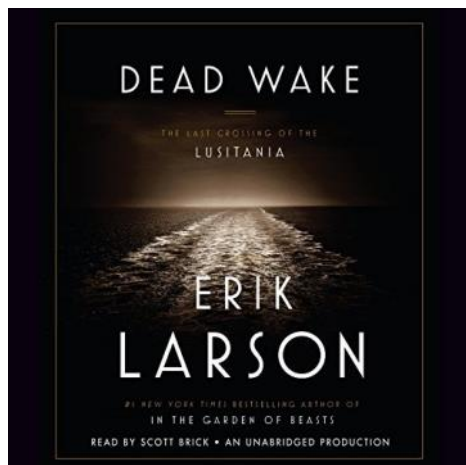
Recent additions to our non-fiction collection include *Bark: A Field Guide to Trees of the Northeast* by Michael Wojtec. With detailed information and illustrations covering



each phase of a tree's life cycle, this indispensable guidebook explains how to identify trees by their bark alone.

Dead Wake: The Last Crossing of the Lusitania is the latest book from bestselling author of historical narratives, Erik Larson.

This book is described as gripping and important, telling the story



we think we know, but don't. We have both a hardcover and audio edition of this book in our collection.

Another interesting and timely book recently added is *Guantanamo Diary* by Mohamedou Ould Slahi.

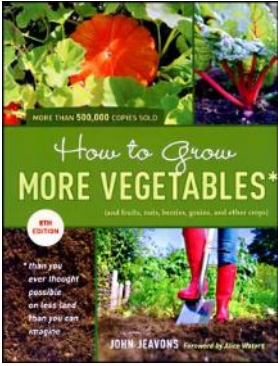
Since 2002, Mohamedou Slahi

has been imprisoned at the detention camp at Guantánamo Bay, Cuba. Three years into his captivity Slahi began a diary, recounting his life before he was taken into U.S. custody, and his daily life as a Guantánamo prisoner.

Also newly added is *Tinkerlab: A Hands on Guide for Little Inventors* by Rachele Doorley. Fifty-five playful experiments that encourage tinkering, curiosity, and creative thinking from the creator of Tinkerlab.com—hands-on activities that explore art, science, and more. For children two and up.



The gardeners among our staff and volunteers are excited about *How to grow More Vegetables* by John Jeavons. This gardening book was recommended for the home gardener by a local farmer.



DVD Collection

Many Spear Library patrons enjoy our DVD collection. We have feature films, documentaries and TV series. BBC productions are popular here at the library.

We have *The Bletchley Circle*, *Call the Midwife*, *Downton Abbey*, *Endeavour*, *Sherlock* and more terrif-

ic series from BBC. We have popular HBO series including *Boardwalk Empire*, *Girls*, *Game of Thrones*, and *Veep*. We also have popular series from network television including *Glee*, *The Goodwife*, *Parenthood*, *Parks and Recreation* and much more.

The Friends of the M.N. Spear Memorial Library

The Friends of the Library support our town's public library through fundraising, sponsorship and advocacy. Townspeople can support the Friends in the following ways:

- Be a member! Dues are \$10 for seniors, \$15 for an individual, \$20 for a family, \$50 for a supporter and \$100 for a benefactor. Membership brochures are available at the library.
- Buy Friends of the Library's Dean's Beans Organic Coffee.

Available in whole beans and ground, one pound packages, only \$11 each.

- Donate returnable bottles and cans. We really do collect returnable bottles and cans and volunteers bring them to redemption centers to raise funds for the library! Please bring your returnable to the library. Let us know if you would like to take a turn returning them too.

Kayaks, coming soon

As I write this, a wintry mix is falling from the sky and it is cold. Brrr. It has been a long, cold and snowy winter. The spring thaw seems to be taking its time. But Lake Wyola will melt and we'll be enjoying sunshine and warm days soon enough. We plan to begin the kayak loan program in May and we'll post the official start date on our website, mnspear.org.

Broadband, continued from page 1

construction of telecommunications networks and offer services. Their goal is to bring affordable, reliable high-speed Internet service to every home in the WiredWest designated communities. This past December, 32 of the WiredWest towns' Select Boards signed Resolutions to work towards building a Regional Broadband Network.

WiredWest communities are currently in the midst of a major campaign to make that goal a reality and secure town commitments for the project. The 32-town fiber-optic network, estimated to cost \$79 million, will be built by Massachusetts Broadband Institute (MBI), which will contribute about 40% of the funding for the network and oversee its construction. WiredWest will own and operate the network on behalf of its member towns, which will be asked to authorize bonds to pay for the remainder of the construction costs at upcoming town meetings.

The municipal light plant cooperative is governed by a Board of Directors comprised of a delegate and an alternate delegate from each of the member towns. Each town has a single vote. The Board of Directors meets monthly, alternating from town to town from Sandisfield, on the Connecticut

border, to Rowe on the Vermont border, from Shutesbury in the happy valley, to Egremont on the border with New York. It is a geographically diverse region but with one thing in common, reclaiming the Internet dead zone. As a regional organization, Shutesbury is part of that whole.

Management of WiredWest is organized into committees. The Executive Committee is in charge of operations. These committees then bring proposals to the Board of Directors for discussion and approval. We have an exceptional group of volunteers that have done planning, outreach, research, financial modeling, engineering, marketing, grant writing, development of the business plan, and now, working with MBI, construction of the last mile network.

There are 19,000 households in the 32-town region. Collectively we call on the skills, expertise and knowledge not available in a single town. The small towns of Western Massachusetts are declining in population. We all need access to broadband, to the internet to be economically viable and sustainable in the future. If a family has the choice to move to a town with Internet or a town without, they will choose the town that has Internet services available.

Some people in WiredWest towns are more fortunate than others and

have DSL Internet service through Verizon. At this time they are content because they are satisfied with DSL. While fiber is clearly superior to DSL, for DSL users the advantages of fiber don't necessarily outweigh the risks of a major capital investment.

It's important that DSL users understand **Verizon is phasing out DSL** and that unless we start building this fiber network now, we're not going to have a good alternative or replacement when DSL does finally disappear. Here are some links to read more about the future of DSL.

<http://stopthecap.com/2013/03/21/verizons-long-term-plan-to-abandon-wired-landlinesbroadband-in-non-fios-areas-begins/>

<https://www.techdirt.com/blog/wireless/articles/20120724/03084419805/explanation-why-verizon-is-driving-dsl-users-to-competitors-cable-lines.shtml>

<https://gigaom.com/2012/03/06/why-verizon-is-killing-dsl-cheap-broadband/>

Your Shutesbury Broadband Committee understands the importance of this issue and will continue to work to support the best broadband solution for Shutesbury. We all stand to gain by paying attention to this issue.



TOWN OF SHUTESBURY
P.O. BOX 276
SHUTESBURY MA 01072

Return Service Requested

PRSR
U.S. POSTAGE PAID
PERMIT #305
AMHERST MA 01002

OUR TOWN
Part 1 of 2!
The warrant and budget will
arrive later this month.

Resident
Shutesbury MA 01072

HOW TO CONTACT TOWN OFFICIALS

Go to www.shutesbury.org to find email addresses, or call the appropriate number below.

ACCOUNTANT Gail Weiss 259-1108	ELEMENTARY SCHOOL Jackie Mendonsa, Principal 259-1212	POLICE DEPARTMENT Chief Thomas E. Harding 259-1279 Dispatch 413-625-8200
ADMINISTRATIVE SECRETARY Linda Avis Scott 259-6550	EMERGENCY MANAGEMENT DIRECTOR Walter Tibbetts 259-1211	RECYCLING COORDINATOR Gary Bernhard 259-1235
TOWN ADMINISTRATOR Rebecca Torres 259-1214	FINANCE COMMITTEE Rus Wilson 259-1820	REGIONAL SCHOOL COMMITTEE Stephen Sullivan 259-1626
ANIMAL INSPECTORS Denise Chiminiello 259-1020 Nancy Long 345-8796	FIRE DEPARTMENT Walter Tibbetts, Chief 259-1211 or at home 259-1286	SHUTESBURY SCHOOL COMMITTEE Sean Woodard-McNiff 978-660-7983
ASSESSORS Kenneth Holmberg 259-3790	HEALTH AGENT David Zarozinski 549-3710	UNION #28 SCHOOL SUPT. Robert Mahler 423-3337
BOARD OF HEALTH Catherine Hilton, Clerk 259-2122	HIGHWAY DEPARTMENT Tim Hunting 259-1215	SELECT BOARD Elaine Puleo, Chair 259-1979 Mike Vinskey 253-4260 J. April Stein 259-1074
BUILDINGS COMMITTEE Dale Houle 259-1696	HISTORICAL COMMISSION Leslie Bracebridge 259-1973	SHUTESBURY BROADBAND COMMITTEE Gayle Huntress 259-1905 Asha Strazzero-Wild 413-478-8368
BUILDING INSPECTOR Jim Hawkins 413-774-3167 x. 113	M.N. SPEAR MEMORIAL LIBRARY Mary Anne Antonellis, Dir. 259-1213	TAX COLLECTOR Ellen McKay 259-1615
CEMETERY COMMISSION Marilyn Tibbetts 259-1976	LIBRARY TRUSTEES Co-Chairs: Michele Regan-Ladd, 259-1149 Michele Sedor 256-5495	TOWN CLERK Leslie Bracebridge 259-1204
COUNCIL ON AGING Med-Ride Program 259-2123 Marilyn Tibbetts, Chair 259-1976	OPEN SPACE COMMITTEE Janice Stone 259-1557	TREASURER Gabriele Voelker 259-1801
CONSERVATION COMMISSION Leave inquiries at 259-3792	OUR TOWN NEWSLETTER Janis S. Gray 259-1584	TREE WARDEN Thomas Houston 259-1508
CULTURAL COUNCIL Julie Stepanek, contact 387-5670	PERSONNEL BOARD J. April Stein 259-1074	WEB COMMITTEE Fred Steinberg 259-9996
DEPT. OF VETERANS' SERVICES Timothy Niejadlik. 772-1571	PLANNING BOARD Deacon Bonnar 259-1276	ZONING BOARD OF APPEALS Charles J. DiMare 549-5330
DOG OFFICER Nancy Long 259-1279	PLUMBING/GAS INSPECTOR John Letourneau 367-0017	250th ANNIVERSARY COMMITTEE Janis S. Gray 259-1584 Maryélise Lamet 259-1551
ELECTRICAL INSPECTOR Maurice Gregoire 253-7505		

POLICE, FIRE & RESCUE SQUAD 911