

# OUR TOWN

## Help us meet these challenges in 2008

David Dann, *Town Administrator*

January for me is a month of renewal. A new year brings new exciting challenges for all of us.

One important challenge is to find 16 more households to sign up with National Grid Electric Company for the **New England Greenstart** program by March 31.

Participating in the Greenstart program protects our environment and earns money for our town to improve our energy efficiency in our municipal buildings and/or develop renewable energy sources. For more information, please read the enclosed flyer.

Our current Recycling Coordinator, **Blaire Robey**, has increased her responsibilities at the Amherst Survival Center and can no longer fulfill all the various aspects of the position.

We will begin the prospect of hiring a **new Recycling Coordinator** very soon. This is a part time position, but one that is important.

If you would like more information or a job description, call me at 259-1214 or email me at [townadmin@shutesbury.org](mailto:townadmin@shutesbury.org)

The **Leverett/Cooleyville/Prescott Road repair** and reconstruction project is all set to begin this spring. This is scheduled to be a one-year reconstruction project at a cost of over \$3,000,000 that should bring significant improvement to one of our main roads.

In closing, I always remind everyone that if you have some time and interest, please **volunteer by joining one of our boards or committees**. We have over 150 different people

volunteering their time and skills and we *still* have vacancies.

May 2008 bring us peace and prosperity.

## Elected office: Another way to serve!

Positions on the May 3 town election ballot due to term expirations follow:

Board of Health - 2 three-year positions

Cemetery Commission - 1 three-year position

Constable position - 1 one-year  
Board of Library Trustees - 2 three-year positions

Planning Board - 3 three-year positions

School Committee - 2 three-year position

Board of Selectmen - 1 three-year position

Town Clerk - 1 three-year position.

Should any of these positions interest you, please request a nomination form from the Town Clerk's office.

More positions may open up due to resignations.

You need only collect 20 signatures for your name to appear on the ballot. **Completed nomination forms must be returned by Monday, March 17.**

## Workshop on proposed zoning revision February 7

Deacon Bonnar, *Planning Board*

The Planning Board has completed lucky Draft 13 of the Zoning Bylaw revision. The new text culminates a five-year effort begun by the Master Plan Committee and carried forward by the Planning Board.

Draft 13 supersedes previous drafts and should be your guide to what is proposed and what is not proposed. The text is available on-line at [Shutesbury.org](http://Shutesbury.org) and in hard copy at Town Hall. The comprehensive zoning revision will be on the warrant at the May 3 Annual Town Meeting.

On Thursday, February 7 from 7:00-9:00pm, we will hold a workshop at the **Shutesbury Athletic Club**. Landowners seeking clarity about the impact of the zoning proposal should bring property maps, acreage data, and information about wetlands, severe slopes, and legal restrictions. Planning Board Members will analyze landowners' parcels with them and review land use possibilities.

Finally, please find inserted into this newsletter an open letter on new zoning. We look forward over the next few months to vigorous and wide-ranging discussion of zoning and Shutesbury's future.

## Local candidate accepts post as library director

The Board of Trustees of the M. N. Spear Memorial Library has named **Mary Anne Antonellis** as the library's new director.

A town resident for 16 years, she lives on Pelham Hill Road with husband Chris Bonak, son Nevin Bonak and daughter Rachel Bonak.

A member of the Friends of the Library, she began working at the

library in a temporary position after director **Jane Buchanan** moved on last September.

In the past, Antonellis has served Shutesbury as Recycling Coordinator, and been active at the elementary School as a coordinator of the Learning Partners program and with the PTO and Arts and Cultural Programming Council.

## Messages from the Town Clerk

Leslie Bracebridge, *Town Clerk*  
Joan Hanson, *Assistant Town Clerk*  
Office Hours: Monday through  
Thursday 9:00am - 1:00pm  
Call 259-1204 for special  
appointments or to leave a message.

**An Annual Street List form**, requesting the household census on January 1 of this year, should have been received at each Shutesbury household by the time you receive this newsletter. As required by state law, these forms should be completed and returned in the SASE within 10 days of receipt.

If your household did not receive a form, please call the Town Clerk's Office (259-1204) and one will be sent to you right away. Returning the completed street list form keeps one's voter registration active, ensures one's continued receipt of municipal mailings, and verifies eligibility for the trash bag distribution list in May!

**The 2008 Presidential Primary** will occur on Tuesday, February 5. The last day to register to vote in the Presidential Primary was Wednesday, January 16.

**If you did not register in time, please check with the Town Clerk's office of the town from which you came.** You should still be able to vote in that town if you were living there within the last six months.

Even if you are too late for the Presidential Primary, you can still register to vote anytime: in person at the Town Clerk's office or by mail. Mail-in voter registration cards are always tacked up in the outdoor bulletin board of Town Hall and inside Town Hall above the hallway mailboxes.

Call if you would like a mail-in voter registration card sent to you. These cards can also be used if you have moved within the town, changed your name or if you wish to change your party affiliation.

Absentee ballots for the Presidential Primary will be available for those who cannot come to the polls on February 5, due to health concerns, religious restrictions or

because they will be out of town, between the hours of 7:00am and 8:00pm. You (or your relative on your behalf) may apply for an absentee ballot in person, or just write to the Town Clerk, P.O. Box 264, Shutesbury, MA 01072 to request an absentee ballot.

Your request must include your residential and mailing addresses and your signature. If you apply in person, you can choose to vote at that time or a ballot will be mailed to you.

A primary election voter will be given a ballot for the party in which he or she is enrolled. Voters who are not enrolled in a political party may select a ballot of the party of their choice.

Shutesbury's **Annual Town Meeting and Election of Officers** will take place Saturday, May 3, 2008. Polls will be open 8:00am - 3:00pm. The Town Meeting will begin at 9:00am.

If you are not already registered to vote, and you wish to vote on May 3, you must do so by Monday, April 14. As with the Presidential Primary, absentee ballots will be available for those who cannot come to the polls on May 3 due to health concerns, religious restrictions or because they will be out of town, between the hours of 8:00am and 3:00pm on election day. Absentee ballots will be available approximately four weeks in advance of the election, through noon on Friday, May 2. You (or your relative on your behalf) may apply for an absentee ballot in person, or write to the Town Clerk, P.O. Box 264, Shutesbury, MA 01072 to request an absentee ballot.

Your request must include your residential and mailing addresses and your signature. If you apply in person, you can choose to vote at that time or take the ballot home. Ballots are mailed to the applicant in all other cases.

People sometimes ask if they can get an absentee ballot for the Town Meeting Articles. Absentee ballots are strictly for the election of officials and any ballot questions. Town Meeting questions are voted on the floor of Town Meeting after an open exchange of information.

## Our Town change means more mailing parties— come join the fun!

Readers may have noticed that *Our Town* is now published not four, but three times a year.

Town Hall wants to get particularly time-sensitive news to residents more quickly than a quarterly publication allows. And so, the start-of-summer newsletter has been discontinued in favor of increasing the number of briefer, simpler bulk mailings to be sent as needed throughout the year.

Both types of publications still rely on the willingness of our volunteers to help **Leslie Bracebridge** and **Joan Hanson** fold, stuff and/or label them for the mail.

In late August, the combined Summer/Fall 2007 *Our Town* was sent off by **Glenn Cherrits, Laurretta Gass, Barbara Goodhind, Karen Traub** and **Debra Pichanick**.

Pitching in with a September 2007 special mailing were **Marilyn Tibbetts, Deacon Bonnar, Al Werner, Bill Elliott, Catherine Hilton, Al Springer, Steve Puffer** and **Tom Harding**.

November's special mailing reached you with the help of **Deacon Bonnar, Penelope Kim, Marilyn Tibbetts, Bill Elliott, Catherine Hilton** and **Mary Desena**, a visitor from out of town!

If you'd like to join future "mailing parties," please call the Town Clerk at 259-1204. We welcome your help daytime, nighttime, in your home or at Town Hall, whenever or wherever it suits you best.

*Our Town*, published three times a year in January, April and late August or early September, is supported by tax dollars. We welcome news from Town of Shutesbury departments, boards, and committees, and from individuals and groups about local projects, activities, or special events of benefit to our community. Submissions promoting the sale of goods or services for private profit cannot be accepted.

Janis S. Gray, Editor  
Leslie Bracebridge, Town Hall  
Liaison



PRINTED ON  
RECYCLED STOCK  
30% POST CONSUMER WASTE

## Changes in the Conservation Commission

Randy Stone, Kevin Weir and Penny Jaques, *Shutesbury Conservation Commission*

If you haven't contacted the Conservation Commission recently, you'll be in for a nice surprise. In the summer of 2006, **Linda Avis Scott** began a new position as part-time clerk for the commission.

Linda, a Shutesbury resident, has been a great asset to the volunteer commission and a wonderful resource to the town. Town residents are getting quicker responses to their questions and the commission's business is running much more smoothly.

Linda is in Town Hall on Tuesday and Thursday mornings. During her office hours, she:

- \* responds to voice mail messages for the commission
- \* schedules site visits, public hearings and public meetings
- \* assists residents who need help negotiating complicated wetlands regulation paperwork.

**One other change that the commission would like to make is to find two additional members** so we are once again a full five-member commission. With Linda as clerk, the job of serving on the commission is much more enjoyable. Contact us if you're interested in finding out what's involved.

**Office Hours:** Tuesday and Thursday, 10:00am - noon

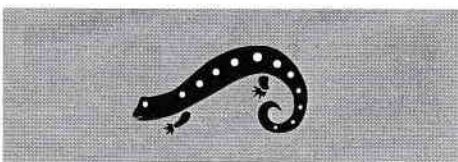
### Conservation Commission

**Meetings:** 2nd Thursday of each month at 7:00 pm in January and February; 2nd and 4th Thursdays beginning in March.

### New Conservation Commission

**Phone Number:** 259-3792

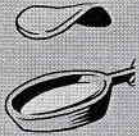

**Conservation Commission Email:** [concom@shutesbury.org](mailto:concom@shutesbury.org)



Come one, come all!  
*Shutesbury Firefighters Association's*  
**Great Pancake**  
**Breakfast**

Saturday, February 2  
8:00-0:30am

Shutesbury Elementary School  
23 West Pelham Road



### Assessors' alley

Ken Holmberg, *Administrative Assessor*

Shutesbury Senior Citizens and friends, helpful neighbors and relatives of Shutesbury Seniors, PLEASE TAKE NOTE:

#### Senior exemptions

As you may be aware, on May 7, 2005, the Town of Shutesbury voted to adopt Senior Exemption Options to Clause 41C of Massachusetts General Laws 59, section 5.

For Shutesbury Seniors who have owned a domicile in Massachusetts for the preceding 10 years and whose domicile has been in Shutesbury for the past 5 years, this new law may offer *significant property tax benefits* in the form of a One Thousand Dollar (\$1,000.00) annual deduction from their property tax bill.

The important changes that may affect Shutesbury's seniors are as follows:

**AGE OF ELIGIBILITY** was reduced from 70 years to 65 years

**COMBINED ASSET LIMITS** of homeowner(s) & spouse(s) were increased:

**Single** homeowners increased from \$28,000.00 to \$40,000.00\*

**Married** homeowners increased from \$30,000.00 to \$55,000.00\*

*\*These assets DO NOT INCLUDE YOUR RESIDENCE which may have up to 4 units in it (increased from 3 units).*

**COMBINED INCOME LIMITS** of homeowner(s) & spouse(s) were increased:

**Single** homeowners increased from \$13,000.00 to \$20,000.00\*

Married homeowners increased from \$15,000.00 to \$30,000.00\*

*\*Up to \$5216.00 in Social Security Benefits received may be deducted from income totals.*

Please note that ALL OWNERS of a residence must be included in these totals. For example, if your children are co-owners of your residence, you must include their incomes and assets in the totals to determine qualification.

**Veterans** with service-related disabilities or their survivors have also seen recent increases in their benefits. They may choose to apply for either senior benefits, if eligible, or veteran's benefits, whichever is greater.

The Shutesbury Board of Assessors reserves the right to request income tax returns, birth certificates or other documentation in order to determine eligibility.

Please feel free to contact our office (413-259-3790) if you have any questions regarding this new law and your eligibility for benefits.

Exemptions are applied to the home owner's tax bill and are issued after January 1. Applications are due in the Assessor's Office between January 1 and March 31.

## Note from the Town Collector

Ellen McKay, *Tax Collector*

Dear Shutesbury taxpayers,

With the winter upon us, the third quarter of our real estate bills and the calendar 2008 motor vehicle excise bills are rapidly approaching.

The third quarter real estate tax bills were mailed out the end of December and must be received by this office no later than February 1 to avoid interest.

This bill will probably be a different amount than your first two quarters as it is based on your fiscal 2008 assessment and on the new tax rate. To calculate your total tax responsibility for the entire fiscal year, multiply your valuation on the third quarter bill by the new tax rate.

If you have any questions on the value of your property or if you wish to apply for an abatement or exemption, please contact the Board of Assessors at 259-3790.

The calendar 2008 motor vehicle excise tax bills on vehicles registered at the end of 2007 are usually received from the Registry of Motor Vehicles late in January. If you

receive a bill on a car you have traded or on which you have changed registrations, do NOT ignore the bill. The Board of Assessors should be contacted to obtain an application for abatement. The forms are also available on the Town's web site.

Our **on-line bill paying feature** allows you to pay your tax bills either directly from your checking or savings account with no fee or with a credit card for a fee based on the amount of your transaction.

To use this service, click on the Town's web site and then on the announcement on the Home page.

For Real Estate and Personal Property taxes, you should enter 2008 for the year and just the bill number WITHOUT the RE or PP to enter the program.

For motor vehicle payments, enter the year and bill number which is found on the top, right side of your bill.

Before venturing out to pay a bill in person, please call this office at 259-1615 to check the answering machine to determine if I will be here.

Have a happy, healthy, and safe New Year.

*Ellen*

## Notes from the School Committee

Dan Hayes, *Chair, School Committee*

The School Committee supports our schools and advocates for students in our elementary school, at the regional level and within our school union. We do this in a variety of ways, through creating and revising policies, evaluating the effectiveness of our financial resources and maintaining fluid communication with our Superintendent **Joan Wickman** and Principal **Bob Mahler**.

The School Committee has been busy reviewing policies, including our **safety policy**. One area that has been examined has been the front door entry protocol and how to respond in an emergency situation. We have taken a lot of time to listen to public safety officials and the school administration. We have also consulted with a safety expert and invited community input at our meetings and at two community forums. Details are still being worked out, but our collaborative effort and work towards a consensus has helped to produce a prudent and practical procedure that will provide additional safety measures while enabling our school to maintain an open and welcoming environment.

Another area of focus has been to reflect on **student achievement**. The School Committee reviews materials and data, which inform us on how our students are doing. We review and help to determine the goals for the administration as well as review and provide feedback to the School Council on the School Improvement Plan.

We recently underwent an EQA (Educational, Quality and Accountability) audit, conducted by an independent state agency. The results showed that our school did quite well in many areas, and to those areas that need improvement, the school and School Committee have responded in a positive way. In their respective roles, each will assess and then make any changes that they deem necessary.

*See Schools, continued on page 5*

## *NOW HIRING*

### Custodial Position

Shutesbury Elementary  
School

23 West Pelham Road

2 hours per day after 4:00pm  
Monday through Friday,  
to follow school-year calendar.

Start date 02/04/08

*Contact school office for application: 259-1212, x 100.*

*Schools, continued from page 4*

We also received our **annual "report card."** This shows our MCAS scores in Math to be high (84.3) and English Language Arts to be very high (95.1) in comparison to state averages, and we continue to make AYP (Adequate Yearly Progress).

However, I want to be sure to point out that student achievement is not solely based on test scores. While there are a number of different assessment tools used, such as GRADE, DIBBLES, and MCAS, teachers value each child's progress and effort and base achievement on the growth of each individual student.

Teachers evaluate class work, homework, projects, participation and more, evaluating each individual's success based on his/her overall portfolio as evidence.

We recently reviewed the **reading program**, hearing from our Reading Specialist, **Laurel Lussen**. A lot of effort has been made in all five aspects of reading, as well as implementing early intervention strategies used to support and strengthen student success.

Our Principal, Bob Mahler, reported on our **Instrumental Music Program**. The school now supports much of the cost of this program and this has nearly doubled participation. All students now have equal access to instrumental music and we look forward to the day when our band will play at school and community events.

The School Committee is also committed to **the oversight of the funds in our budget**. We work hard with our administration to find cost-effective ways to maintain our building, equipment and our resources - personnel, programs and supplies. **Marianne Jorgensen** was instrumental in negotiating a favorable Regional Assessment Formula; this determines how much we invest for each student at the regional middle and high school.

Within Union # 28 we combined four special education secretarial positions into one. This produced some savings, but more importantly, it enables us to provide consistency and efficiency, therefore providing better quality services to students.

We are also working with the five towns in the union to create a shared employee agreement. Here, costs and benefits of an employee that works at more than one school can be shared proportionately.

In conclusion, last year we were pleased that we successfully operated within our budget and ended the year with \$9,400 not expended. This money went back to the town.

There are many ways in which our school works hard to continuously improve upon student achievement. There are many professional development opportunities for administration, teachers and staff; one important one has been Research for Better Teaching.

Additionally, Superintendent Wickman has created Job-alike sessions; this is where teachers and administrators from different schools gather together to share student work with their colleagues and to compare and contrast their ideas and classroom experiences.

School Committee members are also actively involved in many ways that impact our school.

As I mentioned, **Marianne Jorgensen** is very busy at the region. She is involved in sub-committees that are addressing transportation, the lunch program and is in contract negotiations for the region.

**Daniel Greenberg** has initiated a Sustainability Committee in our school, to look at ways of reducing waste, creating awareness and conserving energy.

**Matt Hart** attended the Massachusetts Association of School Committee conference in November and serves on the Capital Planning Committee.

**Michael DeChiara** has been appointed to the Franklin County Public School Study Committee. This group is looking at short and long-term approaches to creating efficiency in our public schools, to address the problem of increasing demands and deficiencies in funding.

I am currently chair of Union # 28 and the sub-committee, Budget and Personnel.

There are a few areas we are monitoring closely.

We are beginning to see our **enrollment rise** and some class sizes stretch. Overall enrollment stands at 147 (K-6th), with class sizes of 16, 19, 20, 22, 23(2), and 24. The committee continues to be informed of the numbers and the classroom dynamics while the administration works on contingency plans.

We are also waiting to see how changes at the state level will affect **regional transportation costs**. It appears that the cost to transport students in town will be unbundled from regional transportation, which will shift additional costs to the elementary budget. There is a committee set up to address this issue, with representatives from the four towns in the region and being chaired by Marianne Jorgensen.

We appreciate all of the support that we receive from the community; it comes in so many different ways. The committee also appreciates all of our teachers and staff. They are clearly devoted to our children, working tirelessly to ensure the success of every student: academically, socially and emotionally.

## Preschool screening, enrollment under way

In Shutesbury, developmental screening is available through the school as a first step in a process intended to find children ages 3, 4 and 5 in need of special services and to plan for meeting those needs.

Screening focuses on a child's growth in a number of areas, such as large and small muscle control, speech/language development and concept development.

This activity takes about 20 minutes and consists of a number of games that children typically enjoy playing. The screening gives an indication of whether or not a child's skills are developing within the typical range.

The Shutesbury Elementary School Preschool Program is currently enrolling children for the 2008-2009 school year.

If you or anyone you know has children under the age of 5, or you  
*See Preschool, continued on page 6*

*Preschool, continued from page 6*  
have any questions or concerns about your child's development, please contact Grace Griecci, Pre-k Director, at 413-259-1212 ext. 140 or email her at [grieccg@shutesbury-school.org](mailto:grieccg@shutesbury-school.org)

This service is available to all families in town, including those with a child not already enrolled in the school's preschool program.

## Family Network reaches out to little ones

Since 1998, the Erving School Union #28 has been funded by a grant from the Massachusetts Department of Education/MA Family Network to provide outreach, education and support services for families with children under 4 years of age living in the towns of Shutesbury, Leverett, Erving, New Salem and Wendell.

We offer weekly story hours at the Shutesbury library and play groups at the school gym; Parent Council meetings; workshops based on assessed families needs; field trips; and frequent fun events for the entire family. We also make Home Visits with our Baby Gift Bags to families with newborns to welcome them into our program.

If you have just moved into Shutesbury, have a child under four years of age, are pregnant or have a newborn, then please call **Naz Mohamed** at 413-423-3337 or email [mohamed@erving.com](mailto:mohamed@erving.com) to be put on our mailing list.

This is a wonderful way to meet other Family Network families with young children in your and neighboring towns.



*Left: Two-legged little ones aren't the only curious youngsters discovering winter's beauty.*

*Below: Our January thaw was a fore-taste of spring, as intermittent wetlands filled with melting snow.*

*Photos by Janis S. Gray*

## News from Lake Wyola

Carol Samuels, *Lake Wyola Association*

Winter is settling in beautifully at Lake Wyola.

The early snow of December made for a picturesque landscape as the hemlocks held the pillows of snow and the lake turned to ice.

The best skating came in a small window late in '07, where for one day, the melt and freeze provided a mostly smooth surface for gliding across the ice.

Neighbors came out to take a spin around and greet the folks that were trying their luck at ice fishing under the increasingly cloudy sky.

That night, the New Year's Eve snow storm came in with plenty of dry, light snow, and the cross country skiers and snow-mobilers were seen criss-crossing the lake. Smoke from chimneys spiraled upwards, giving notice that people were around enjoying the winter season and welcoming in the New Year.

The Lake Wyola Association is actively planning the summer's events, and the cyclical nature of Earth is always on our minds. Even while enjoying the quiet pace of winter, it's not hard to imagine friends twirling at the swing dance, kids splashing as they race in the water carnival, or boats on parade during



the July 4th celebrations.

But with the shovels close at hand, it's clear that winter intends to slow the pace for a while longer. The potential of each day is pursued as one wishes. Each glimpse of the Lake Wyola is unique and inspiring.

### Loving care may be priceless—but you can be paid for the care you give!

If you provide care for a family member, friend or neighbor, Franklin County Home Care has funds to pay you for that important work.

Please call 413-773-5555 or 978-544-2259 and ask for the Information and Caregiver Resource Center where a Resource Consultant can help you.

# The M.N. Spear Memorial Library

10 Cooleyville Road  
259-1213  
www.mnspear.org

Mary Anne Antonellis, *Director*

## Hours

Monday and Wednesday  
11:00am to 1:00pm  
3:00pm to 6:00pm.  
Tuesday and Thursday  
3:00pm to 7:30pm  
Saturday  
10:00am to 12:00pm  
Sunday  
3:30pm to 5:30pm

Last September, after more than three years serving as the Library Director here in Shutesbury, **Jane Buchanan** left to take a position at the Greenfield Public Library.

As I write this I am settling into my first day as the Library's new director. I am honored to have been chosen to fill this position and look forward to the challenges and responsibilities of running our library.

Since Jane left, I have been helping to maintain library services along with Library Assistant **Sally Fairfield**. We owe much appreciation to Sally for sharing her expertise about library procedures and her attention to all of the details these past few months.

Join me in welcoming two new library aides, **Michelle Babione** and **Jessica Carlson Belanger**, to the library staff. They both started covering the weekend hours in the fall.

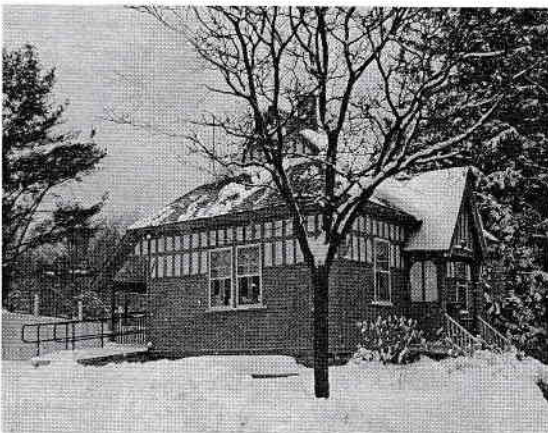


Photo by Janis S. Gray



## C/W MARS

The C/W MARS barcode project has been on hold while the library was without a director. We expect to begin the bar coding project where we left it in September by the time this goes to print. Updates on our progress will be posted on the library's web site. When finished, we will become a C/W MARS mini-net member. Patrons will be able to view our catalog online and order materials from other libraries to be delivered directly to Shutesbury.

## Handicap Accessibility Project

You have probably noticed the small addition to the back of the library. (At far left in photo.) Construction of a bathroom and accessibility ramp is well under way. Progress updates will be posted on our web site. Thank you to **Dale Houle** for overseeing this project.

## Upcoming Programs

This winter, we are participating in **A Tale for Seven Towns**. Shutesbury residents are invited to read a book along with six other towns. The book, *The Worst Hard*

*Time: The Untold Story of Those Who Survived the Dust Bowl* by Timothy Egan, won the National Book Award in 2006.

There will be community book discussions, films, speakers and other related programming in each of the participating towns. **A list of events is included in this newsletter.**

Copies of the book are available at the library and more information will be posted on the library's web site. This program is funded in part by the Friends of the M.N. Spear Memorial Library.

Later this spring, the Book Club is planning a **Local Author Night** open to all Shutesbury residents. Local author **Roland Merullo** will join us to discuss his writing.

His latest novel, *Breakfast with Buddha*, and his other books are available at the library.

This program is scheduled for April 30th at 7:00pm. Thank you to the Shutesbury Athletic Club for allowing us to use the AC for our Local Author Night and other programs. Thanks are also due to the Local Cultural Council for funding this program.

Information about the library and its programs can be found on our web site, [www.mnspear.org](http://www.mnspear.org).

# HOW TO CONTACT TOWN OFFICIALS

ACCOUNTANT <i>Gail Weiss</i>	259-1108	ELEMENTARY SCHOOL <i>Robert Mahler, Principal</i>	259-1212	POLICE, FIRE & RESCUE SQUAD	911
ADA COMMITTEE <i>Martina Carroll</i>	259-1110	EMERGENCY MANAGEMENT DIR. <i>Walter Tibbetts</i>	259-1211	RECREATION COMMITTEE <i>Jen Davies</i>	259-1008
TOWN ADMINISTRATOR <i>David C. Dann</i>	259-1214	FINANCE COMMITTEE <i>Eric Stocker</i>	259-1478	RECYCLING COORDINATOR <i>Blaire Robey</i>	259-3796
ANIMAL INSPECTOR <i>Denise Chiminiello</i>	259-1020	FIRE DEPARTMENT <i>Walter Tibbetts, Chief</i>	259-1211	REGIONAL SCHOOL COMMITTEE <i>Marianne Jorgensen</i>	259-1842
ASSESSORS <i>Kenneth Holmberg</i>	259-3790	HEALTH AGENT <i>David Zarozinski</i>	549-3710	ROADS COMMITTEE <i>Vacant</i>	Call 259-1214
BOARD OF HEALTH <i>William Elliott, Chair</i>	259-2122	HIGHWAY DEPARTMENT <i>Tim Hunting</i>	259-1215	SCHOOL COMMITTEE <i>Daniel Hayes</i>	259-2102
BUILDINGS COMMITTEE <i>Dale Houle</i>	259-1696	HISTORICAL COMMISSION <i>Barbara Goodhind</i>	259-1428	UNION 28 SCHOOL SUPT. <i>Joan Wickman</i>	423-3337
BUILDING INSPECTOR <i>Jim Hawkins</i>	772-2026	M.N. SPEAR MEMORIAL LIBRARY <i>Mary Anne Antonellis, Dir.</i>	259-1213	SELECT BOARD <i>Becky Torres, Chair</i>	259-1618
CEMETERY COMMISSION <i>Marilyn Tibbetts</i>	259-1976	LIBRARY TRUSTEES <i>David Cormier</i>	259-1572	DEBRA PICHANICK <i>Debra Pichanick</i>	367-9550
COUNCIL ON AGING <i>Muriel Gross</i>	259-1371	OPEN SPACE COMMITTEE <i>Janice Stone</i>	259-1557	RALPH ARMSTRONG <i>Ralph Armstrong</i>	259-1021
CONSERVATION COMMISSION <i>Leave inquiries at</i>	259-3792	OUR TOWN NEWSLETTER <i>Janis S. Gray</i>	259-1584	SHUTES.-LEV. BROADBAND COMMITTEE <i>Rob Brooks</i>	253-0887
CULTURAL COUNCIL <i>Renee A. Richard</i>	259-9296	PERSONNEL BOARD <i>Penelope Kim</i>	259-1326	TAX COLLECTOR <i>Ellen McKay</i>	259-1615
DEPT. OF VETERAN'S SERVICES <i>Leo J. Parent, Jr.</i>	863-3205	PLANNING BOARD <i>Deacon Bonnar</i>	259-1276	TOWN CLERK <i>Leslie Bracebridge</i>	259-1204
DOG OFFICER <i>Nancy Long</i>	259-2123	PLUMBING/GAS INSPECTOR <i>John Letourneau</i>	367-0017	TREASURER <i>Gabriele Voelker</i>	259-1801
ELECTRICAL INSPECTOR <i>Maurice Gregoire</i>	367-9988	POLICE DEPARTMENT <i>Chief Thomas E. Harding</i>	259-1279	TREE WARDEN <i>Thomas Houston</i>	259-1508
		<i>Dispatch</i>	625-8200	WEB COMMITTEE <i>Fred Steinberg</i>	259-9996
				ZONING BOARD OF APPEALS <i>Charles J. DiMare</i>	548-9567



TOWN OF SHUTESBURY  
P.O. BOX 276  
SHUTESBURY, MA 01072

PRSR  
U.S. POSTAGE PAID  
PERMIT #5  
SHUTESBURY MA 01072

Pancakes, pancakes!  
February 2, 8:00-10:30 am  
Shutesbury Elementary School

Resident  
Shutesbury, MA 01072

