



New Shutesbury Public Library

Oudens Ello Architecture

Design Meeting #3: April 26, 2023

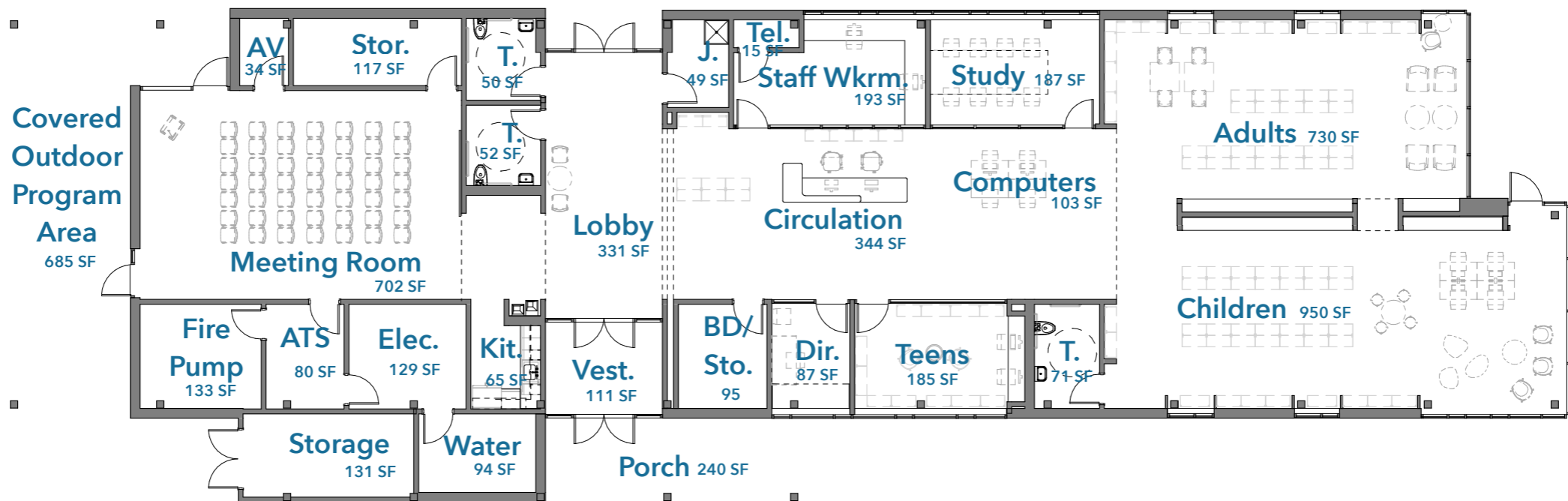


Building Scheme Exterior View from Leverett Road



Schematic Progress

Reading Garden
(Outdoor Program Area)



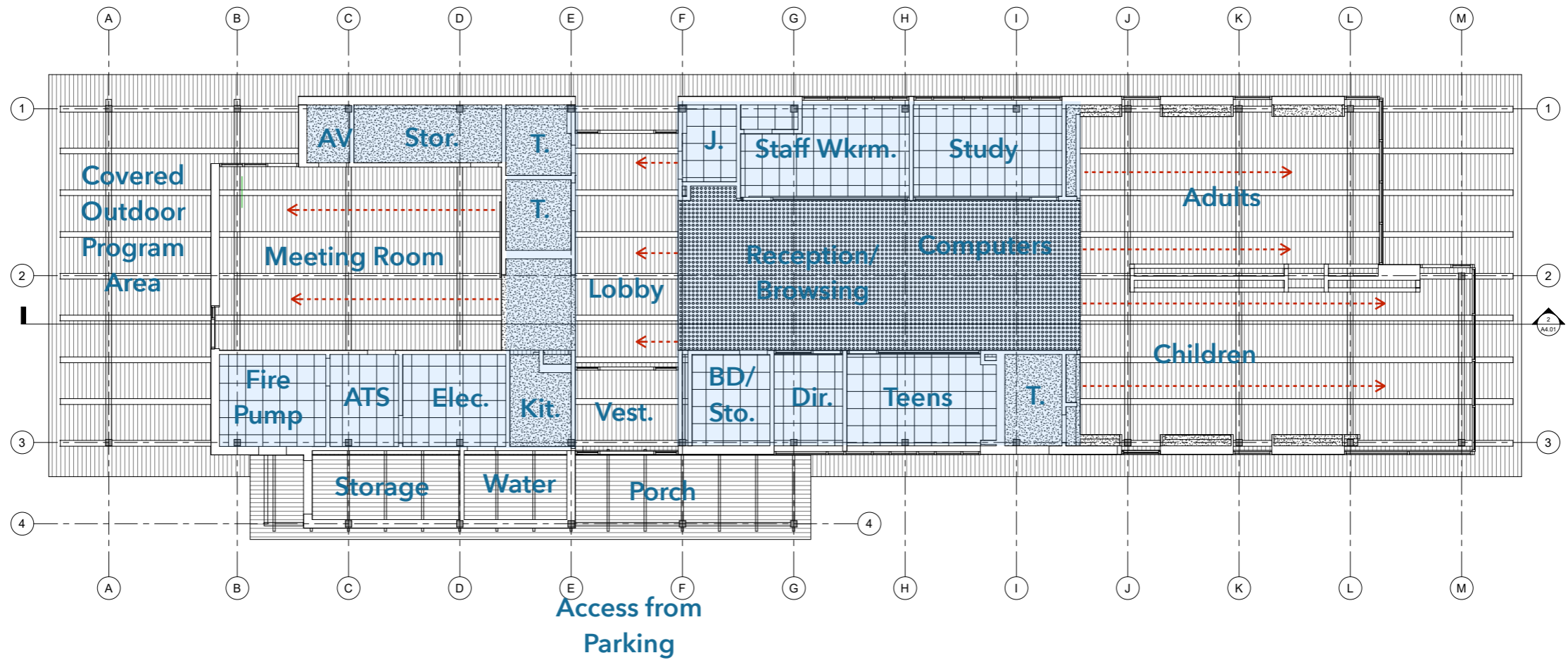
Covered
Outdoor
Program
Area
685 SF

Access from
Parking

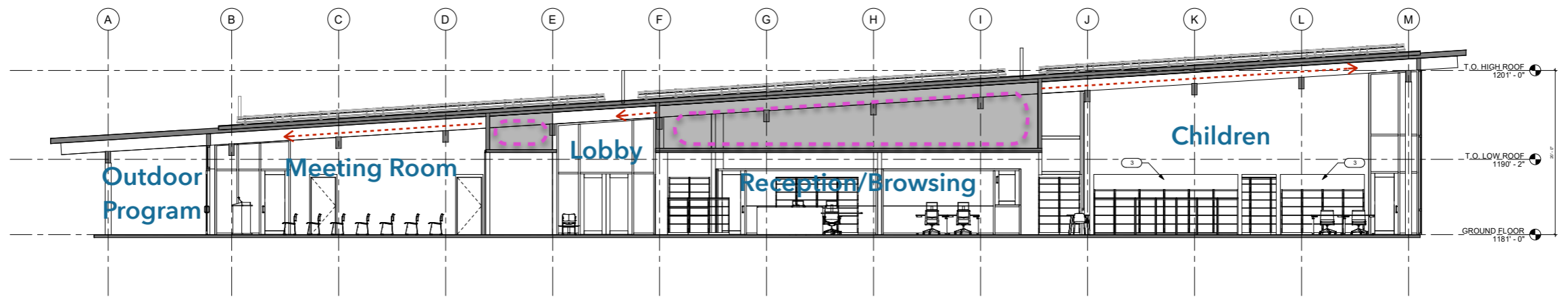
Plan

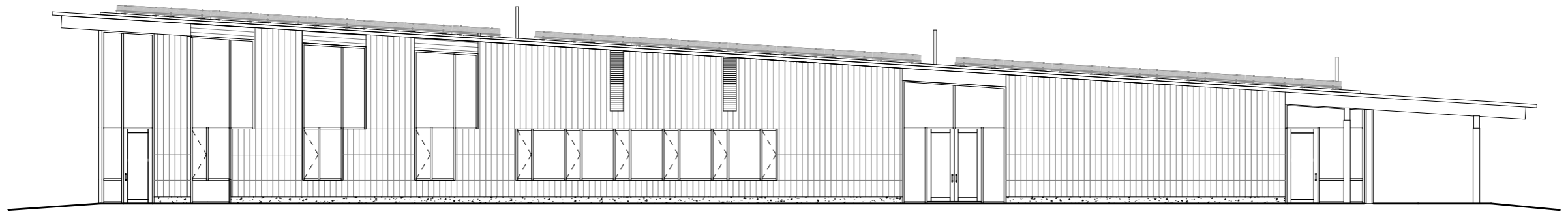


Reading Garden (Outdoor Program Area)

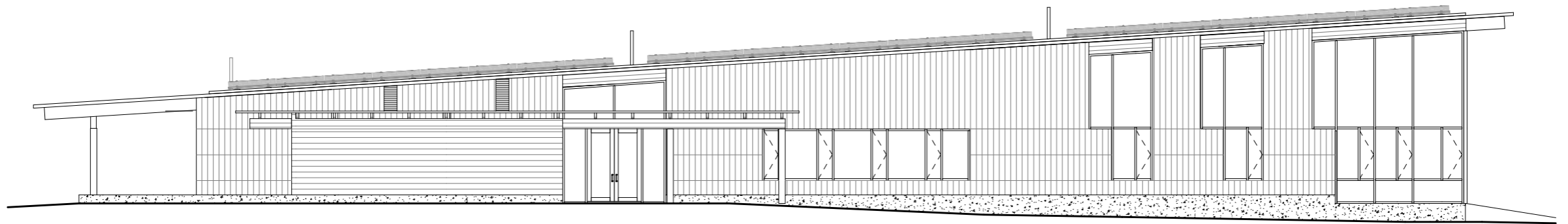


Reading Garden (Outdoor Program Area)

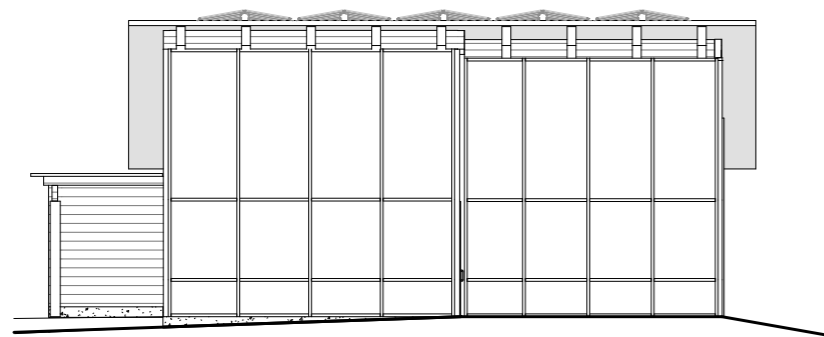




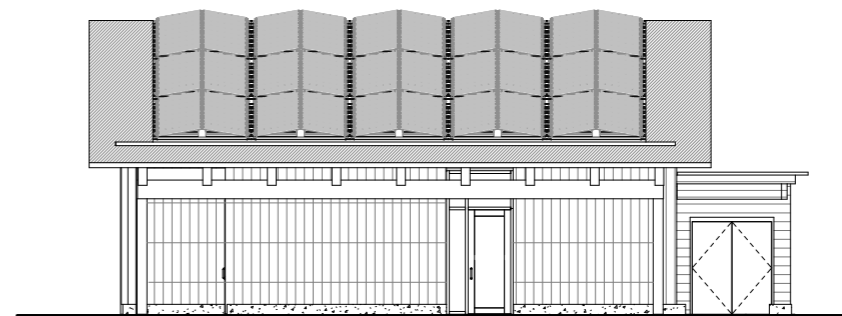
West Elevation



East Elevation



North Elevation



South Elevation

Elevations

Exterior Materials



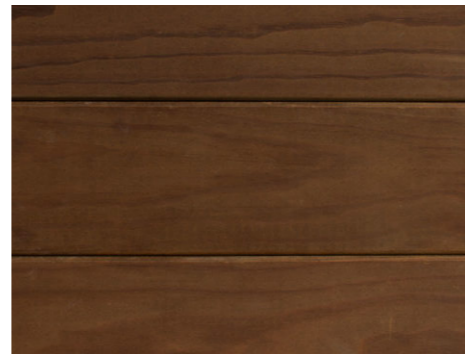
Exterior Materials Alaskan Yellow Cedar (Basis of Design)



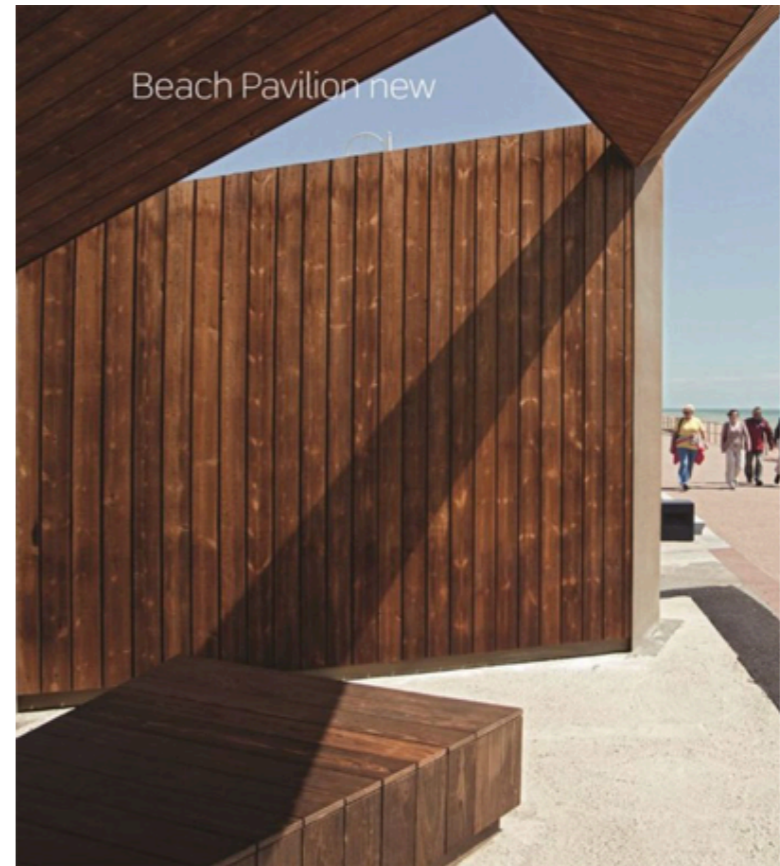
Accoya



Adobo



Kebony



WARRANTY

Accoya wood has an industry-leading warranty, giving you peace of mind and complete confidence for your beautiful Accoya siding.



HIGHLY STABLE

Resistant to rotting, Accoya siding is likely to stay free of any visible distortion over its lifetime. A cost-effective choice for lasting performance.



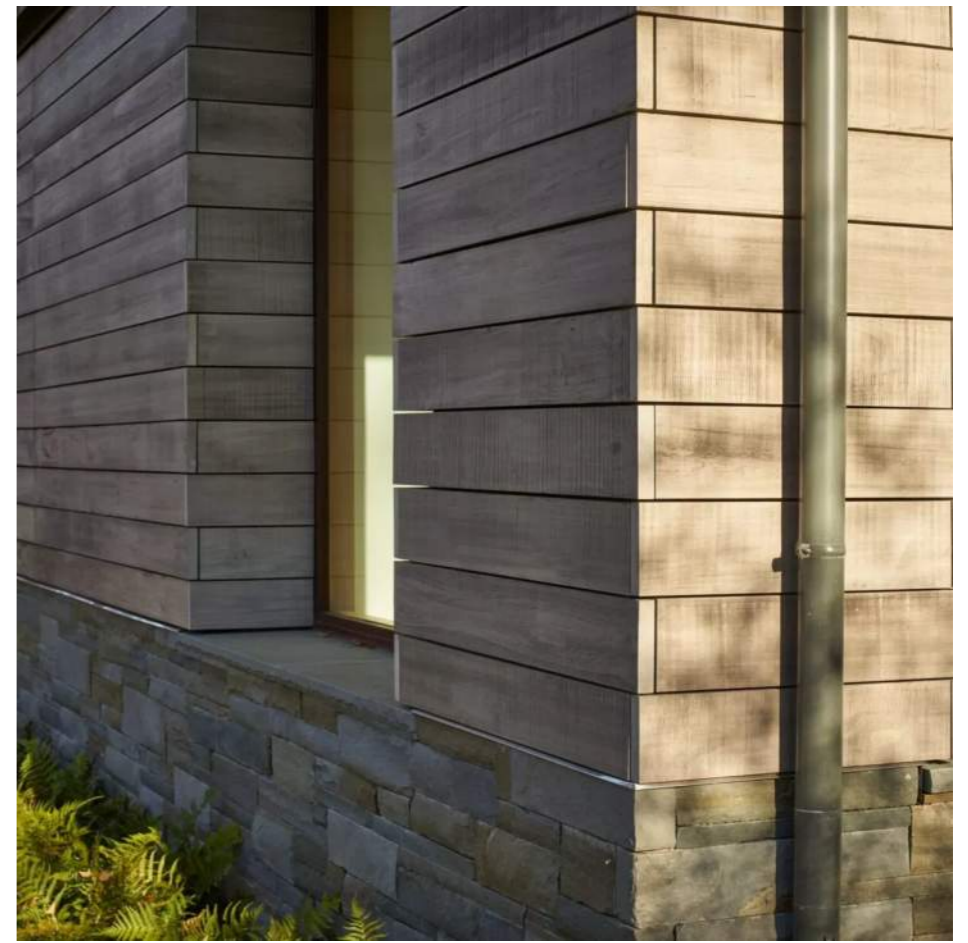
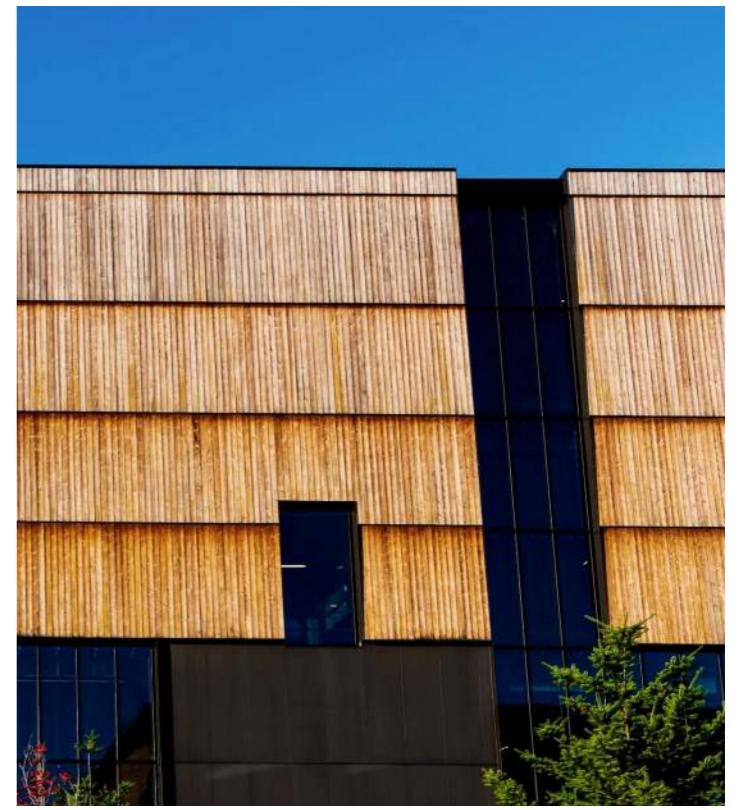
IDEAL FOR COATING

Stay true to your vision with a range of finishes, including Shou Sugi Ban and custom board sizes and fixings. Left untreated, your exterior wood siding will weather naturally. But if you'd prefer to coat it, Accoya siding makes the ultimate surface.



SUSTAINABLY SOURCED

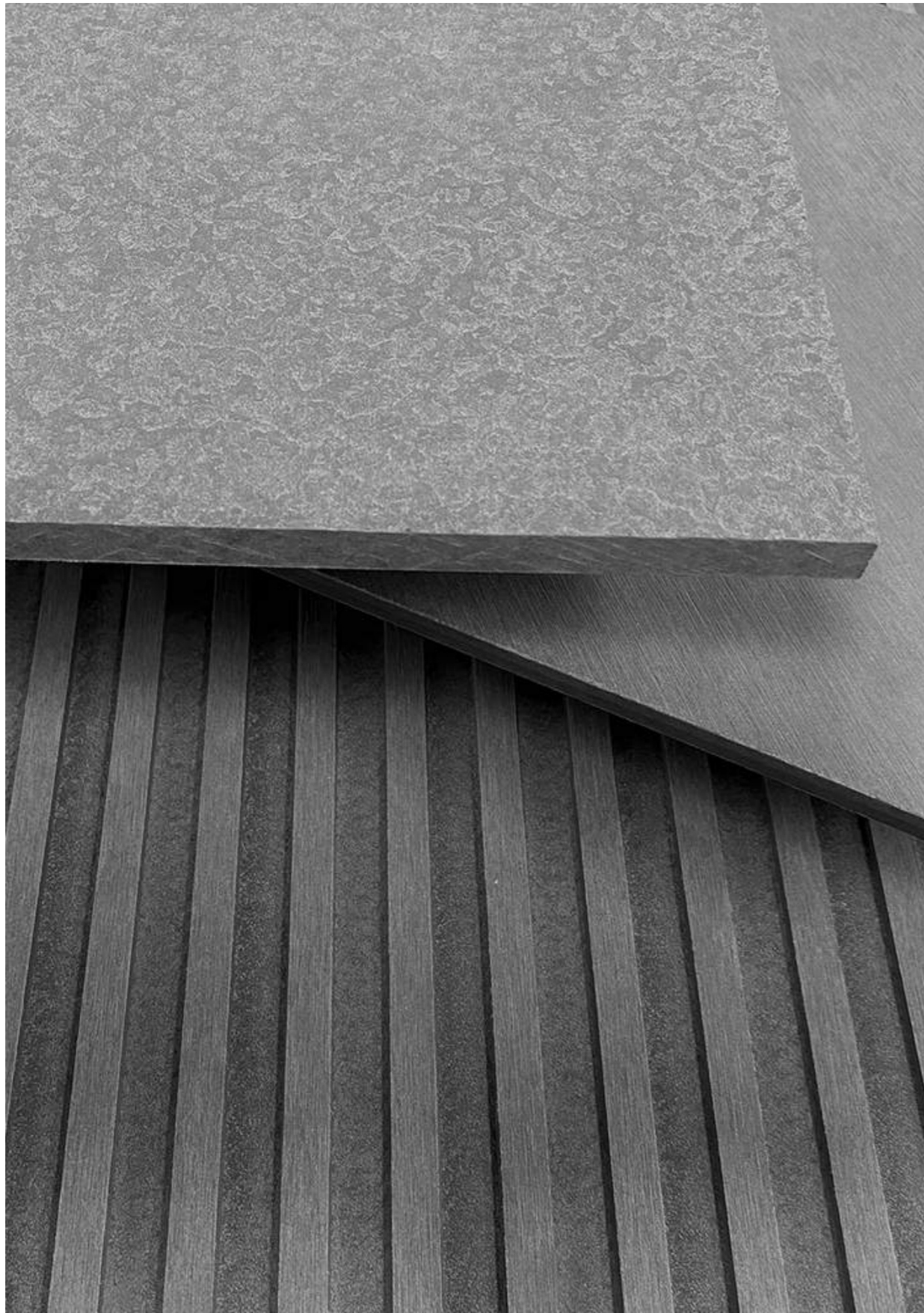
Now you can meet the most demanding of planning requirements. Accoya wood siding is 100% non toxic and contains no biocides or harmful chemicals. Each siding panel is made from FSC® certified timber that's fully sustainable.



Exterior Materials Thermally Modified Wood (SD Pricing Alternate)



Exterior Materials Slate Shingles (SD Pricing Alternate)



Exterior Materials Fibercement (SD Pricing Alternate)

COLLECTION	REVISED COLLECTIONS			SD Set	
	VOL	VOL/LF	LF	LF	
ADULT					
Adults	6000	11	545		
Audio	400	25	16		
CD	300	25	12		
Videos	2000	18	111		
Non Resident					
Subtotal	8700		685	582	85%
CHILDREN					
Childrens	7000	15	467		
Audio	160	25	6		
Video	400	18	22		
Subtotal	7560		495	476	96%
TEEN					
Young Adult	1000	12	114		
Manga	400		32		
Audio					
Subtotal	1400		146	126	86%
CIRC DESK					
Circ Desk	200	12	17	35	210%
RECEPTION BROWSING					
Reception Browsing	384	12	32	90	281%
Inter-Library Loans	4980				
TOTAL COLLECTION	22,640		1343	1309	98%

Collections Summary

2021
Program SD PLAN

Room	Area (in ft2)	(4/26/23)	Delta
Entry	798	770	-28
Lobby	200	331	131
Book Drop Room	48	95	47
Circulation Desk	300	344	44
Reception and Browsing	250	incl.	
Copier / Scanner / Fax Area	incl.	incl.	
Self Check-out / Reserves	incl.	incl.	

Adult	1,060	1,020	-40
Adult Collections	460	730	270
Adult Reading Nook	100	incl.	
Periodicals / Adult Seating Area	200	incl.	
Adult Computers	100	103	3
Small Study Room	200	187	-13

Teen	200	185	-15
Teen Area	200	185	-15

Children	900	950	50
Children's Room	900	950	50

Community	930	918	-12
Community Meeting Room	700	702	2
Meeting Room Storage	100	117	17
Meeting Room AV	50	34	-16
Kitchenette	80	65	-15

Staff	335	295	-40
Director's Office	80	87	7
Staff Workroom	240	193	-47
Telecom Closet	15	15	0
Net Assignable Building Area	4,223	4,138	-85

Service	898	769
Vestibule	80	111
Public Restrooms (Main)	120	102
Family Restroom	0	incl.
Staff Restroom	60	71
Custodial Closet	50	49
General Library Storage	100	incl.
Mechanical	attic	attic
Electrical Service	150	129
ATS (Automatic Transfer Switch)	108	80
Water Service	80	94
Fire Pump Room	150	133
Net Unassignable Building Area	898	860

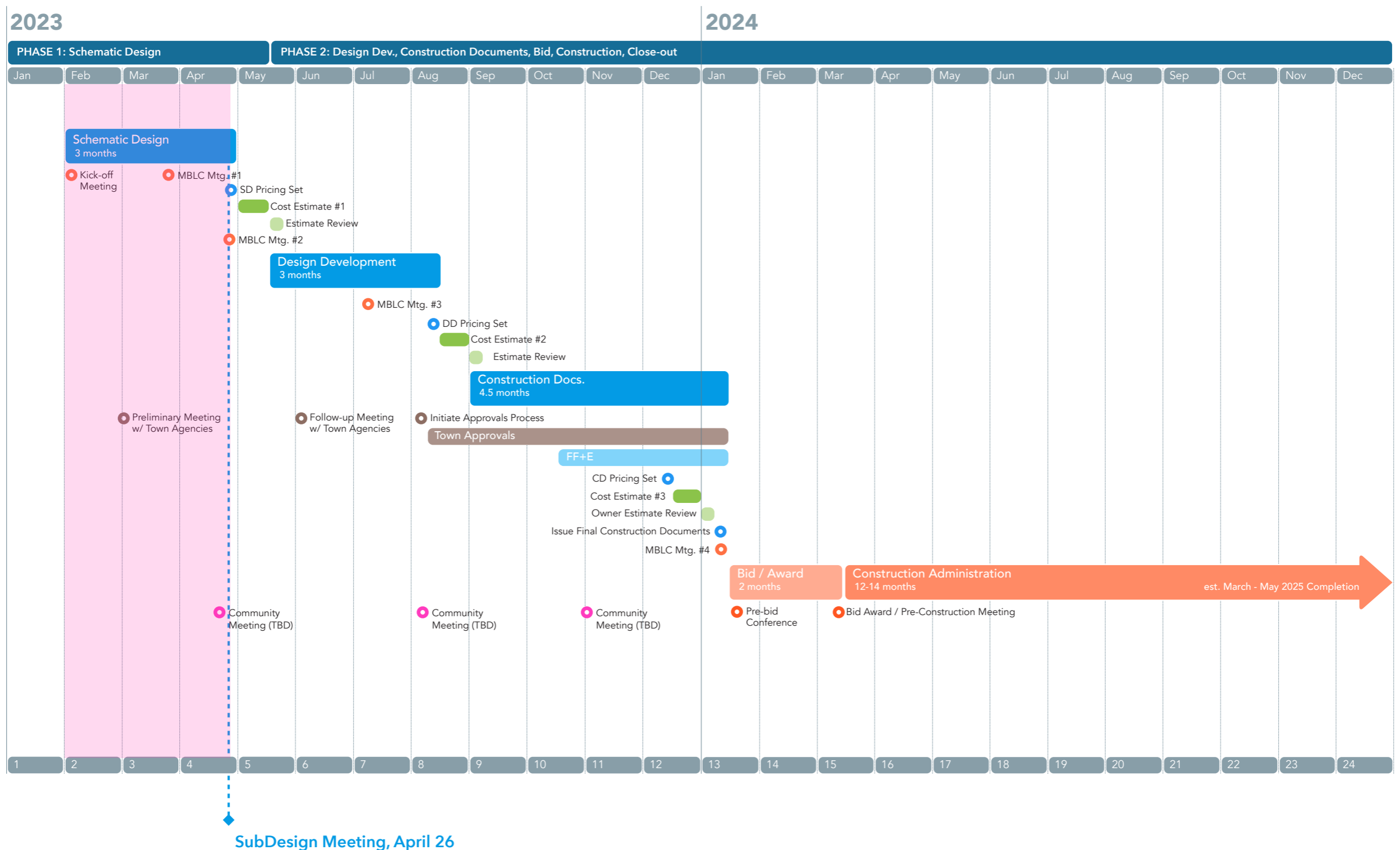
Total Gross Building Area	5,428	5,971
----------------------------------	--------------	--------------

Outdoor Program	1,150	1016	-134
Entry Porch	250	240	-10
Covered Outdoor Program Space	700	645	-55
Outdoor Storage	200	131	-69

Program Summary

Schedule

Project Schedule



Project Schedule



Oudens Ello Architecture