



# New Shutesbury Public Library

---

Oudens Ello Architecture

Community Meeting: April 11, 2023

# Site and Building Planning



Wetland

50' Wetland Buffer

100' Wetland Buffer

Wooded Edge

Wetland

50' Wetland Buffer

50' Wetland Buffer

Wetland

Leverett Road

Lot O-32 - Library Site Current Wetland Conditions



Wetland

50' Wetland Buffer

100' Wetland Buffer

Development Area for New Library

Wetland

50' Wetland Buffer

Site Access

50' Wetland Buffer

Wetland

Leverett Road

Lot O-32 - Library Site Current Wetland Conditions



# Norwell Public Library

Completed 2021



2022 Woodworks Wood Design Award



2022 BSA Design Excellence Award



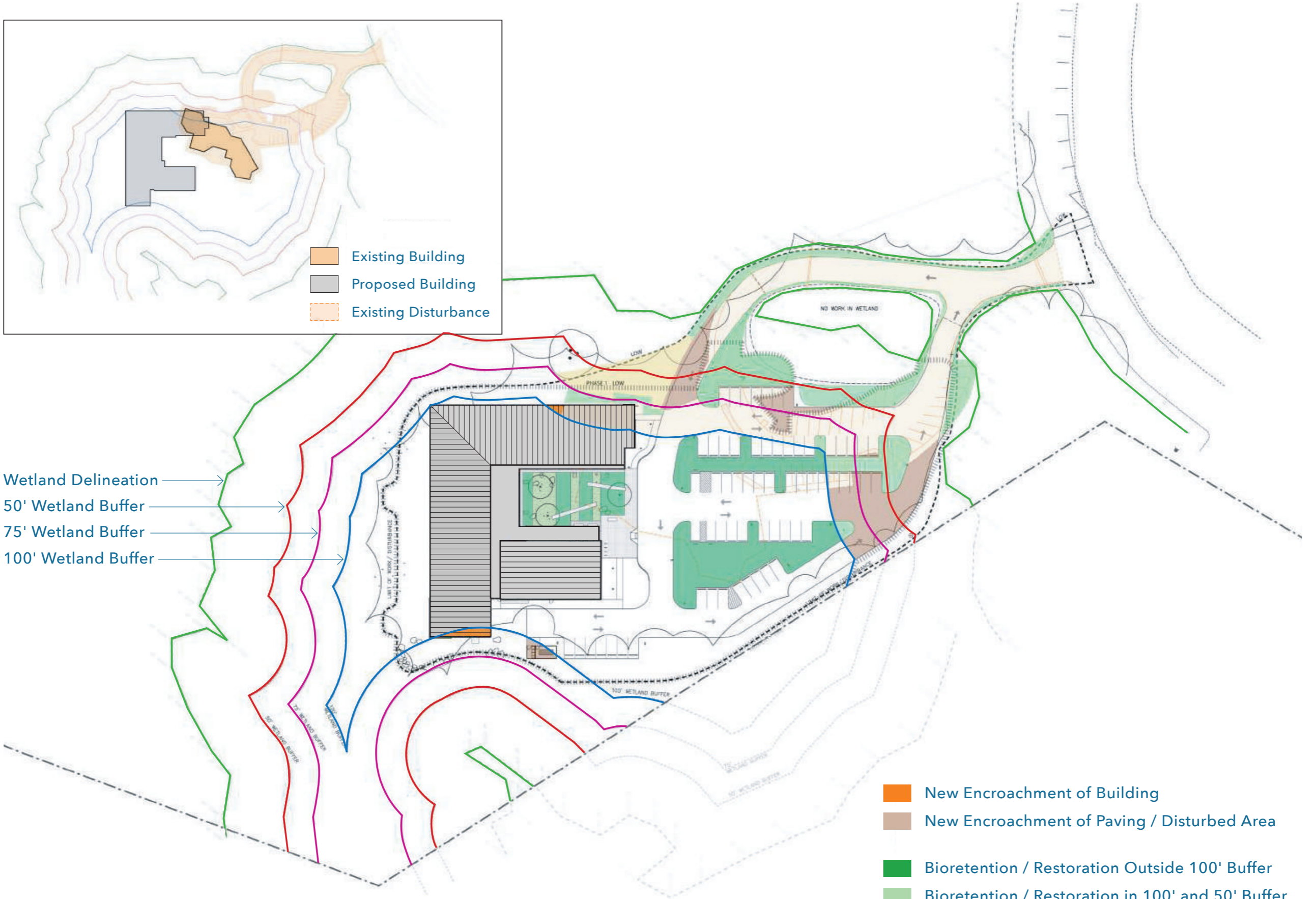
2021 AIA New England Design Award



LEED Silver



Wetland Delineation  
 50' Wetland Buffer  
 75' Wetland Buffer  
 100' Wetland Buffer



- New Encroachment of Building
- New Encroachment of Paving / Disturbed Area
- Bioretention / Restoration Outside 100' Buffer
- Bioretention / Restoration in 100' and 50' Buffer
- Existing Disturbance in 100' and 50' Buffer
- Temporary Disturbance Area to be Restored

# Norwell Public Library Wetland Protection





**Eastham Public Library**  
Completed 2016



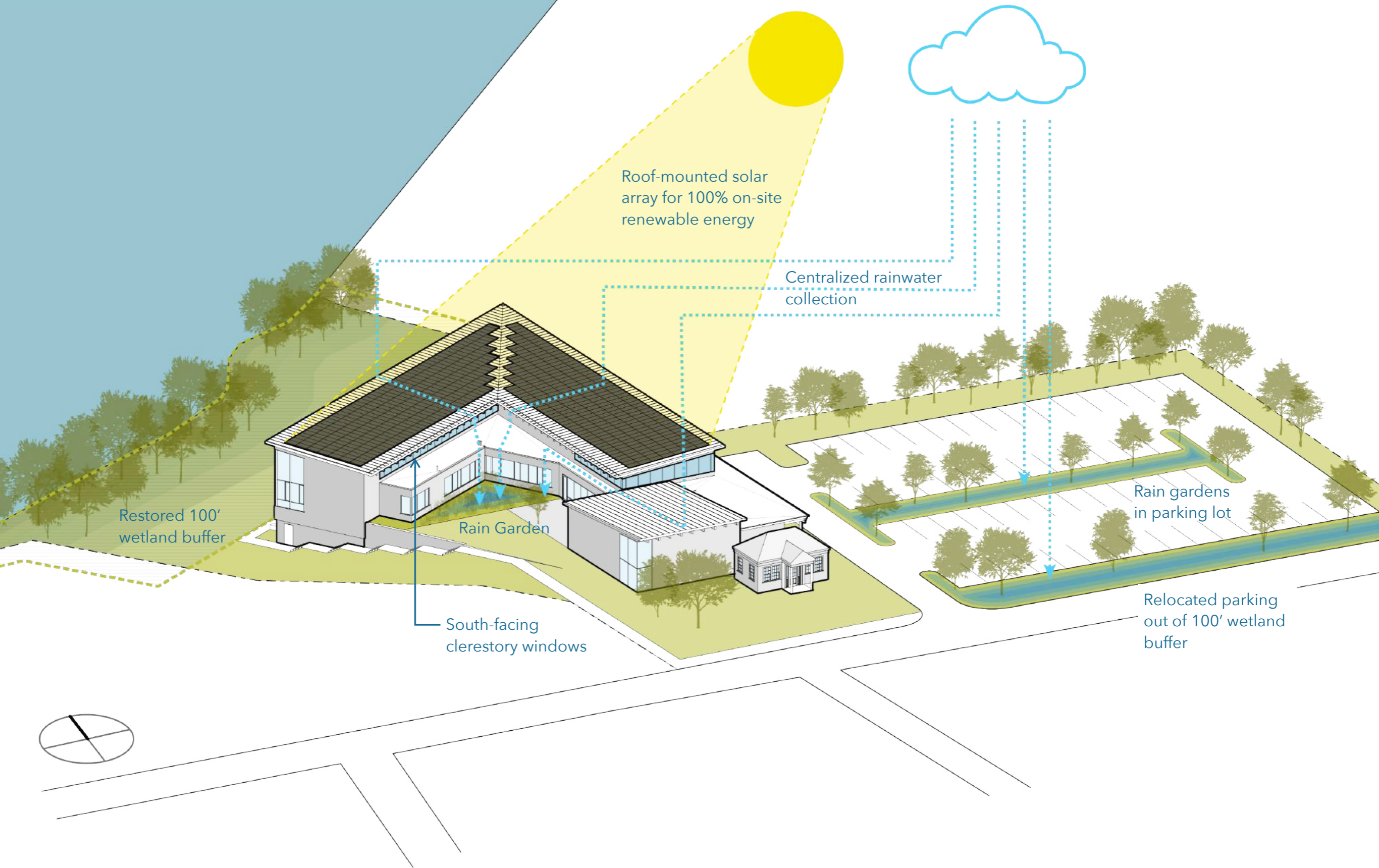
2021 AIA New England Design Award



2018 AIA/ALA Library Building Award



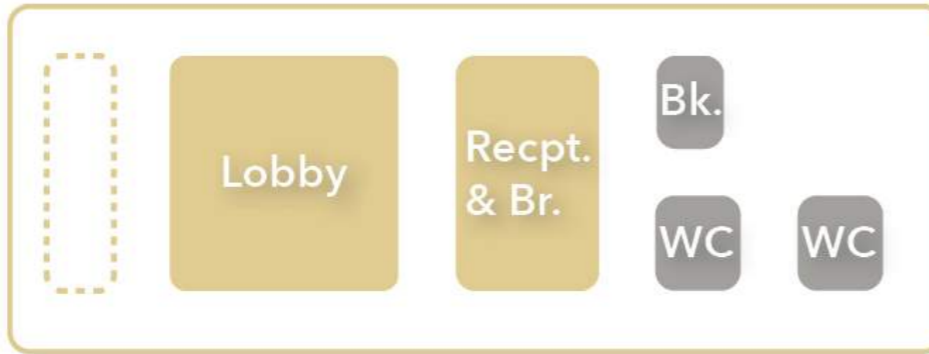
LEED Gold / Net Zero Energy "Class A"



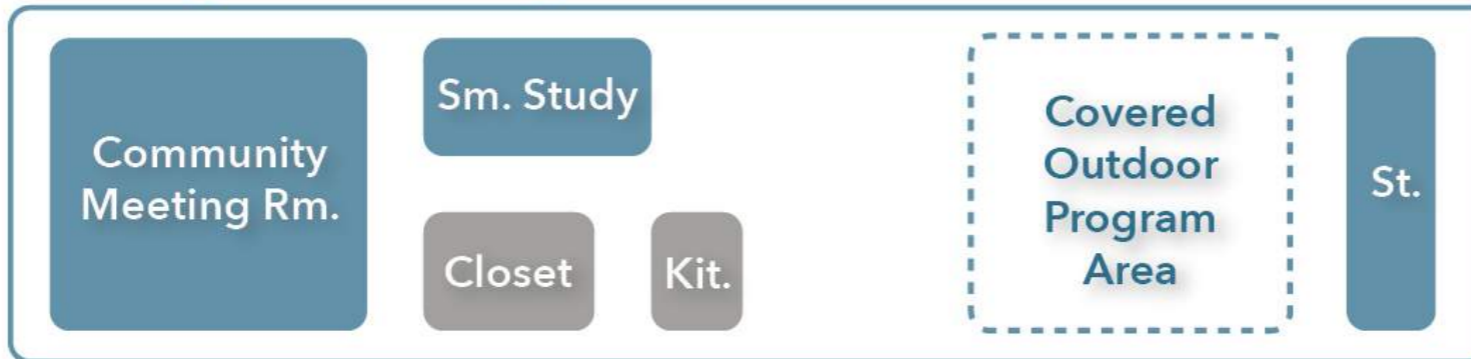
Eastham Public Library Wetland Protection / Sustainability



### Entry Program



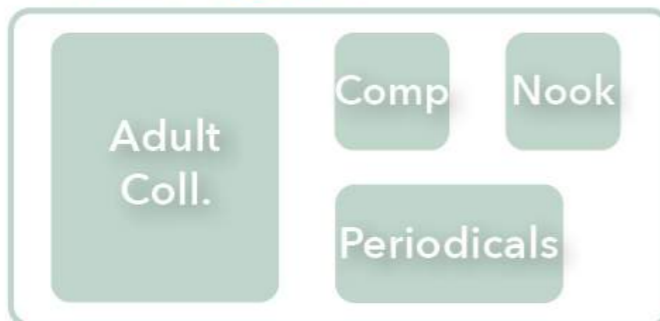
### Meeting & Outdoor Program



### Staff Program



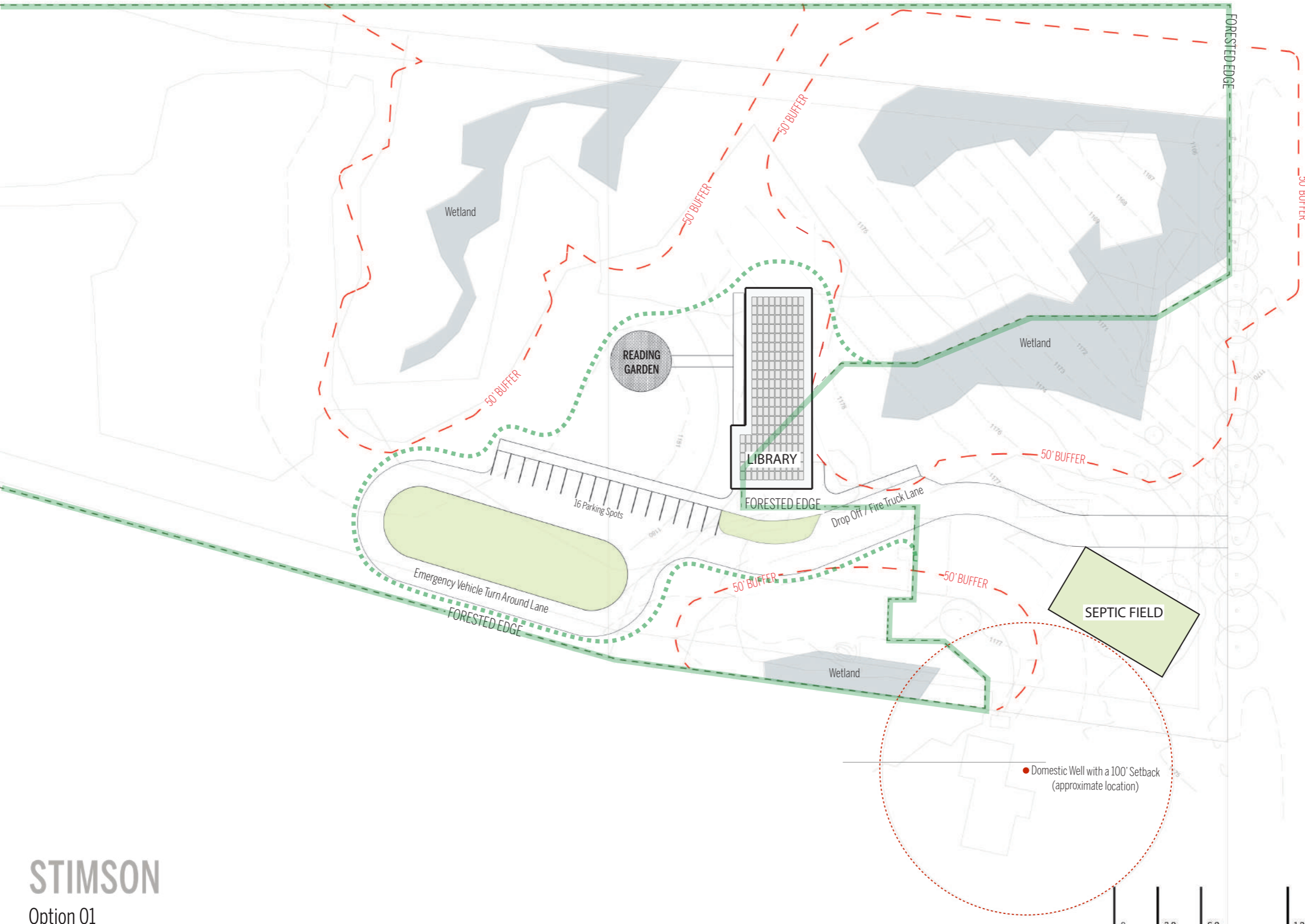
### Adult Program



### Children and Teen Program



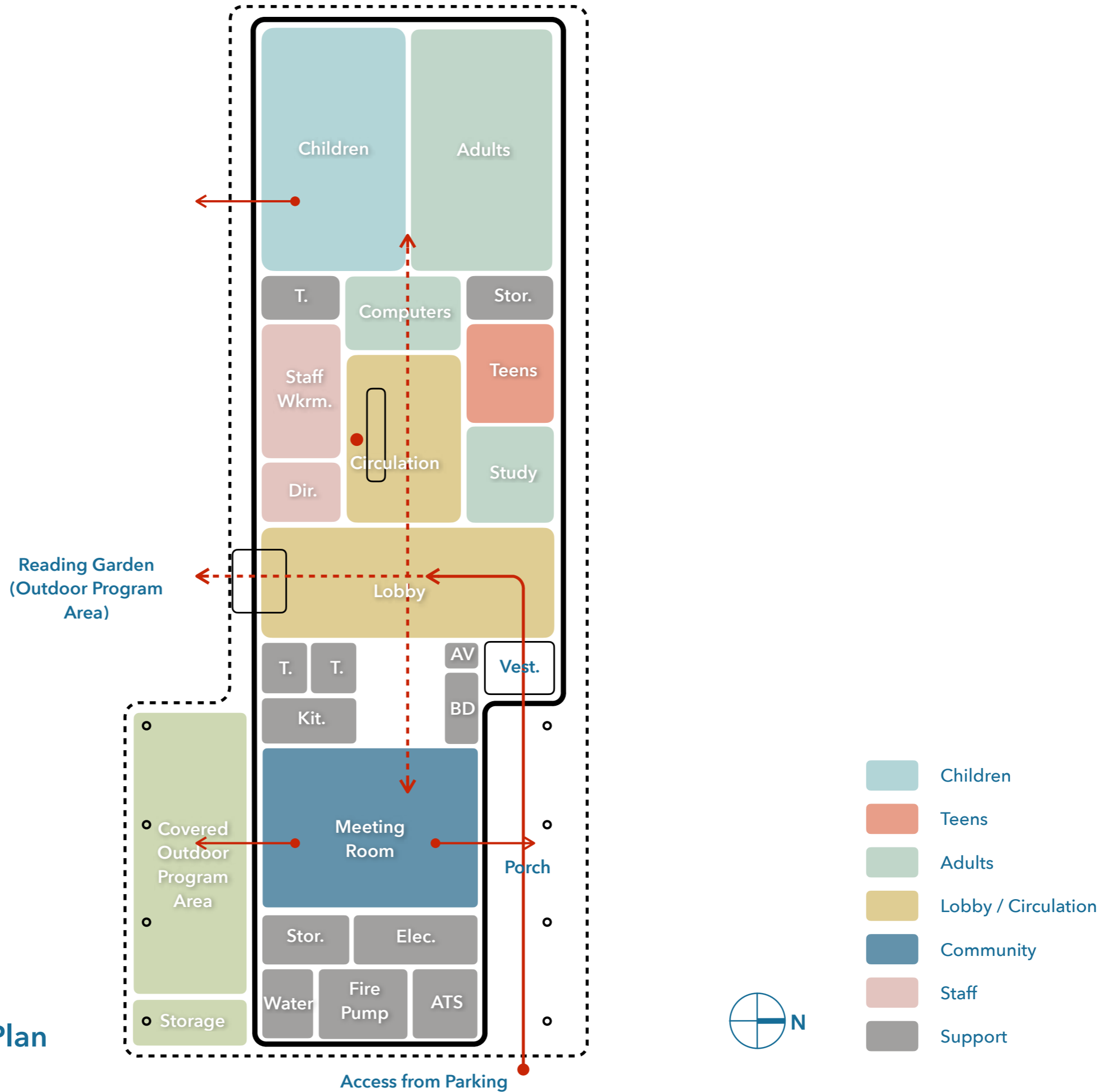
**Building Program** 4,423 NSF  $\approx$  6,000 GSF + 700 SF Outdoor Covered

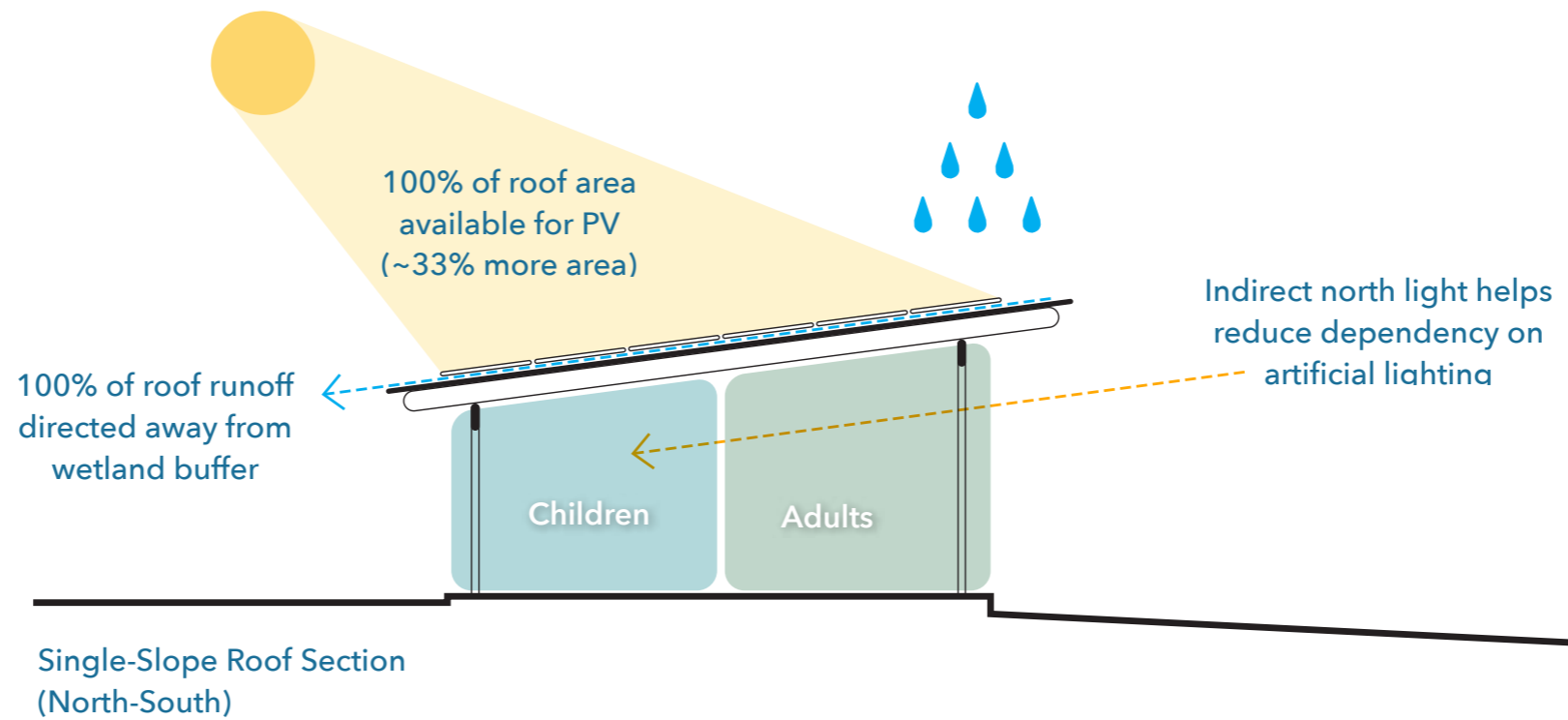
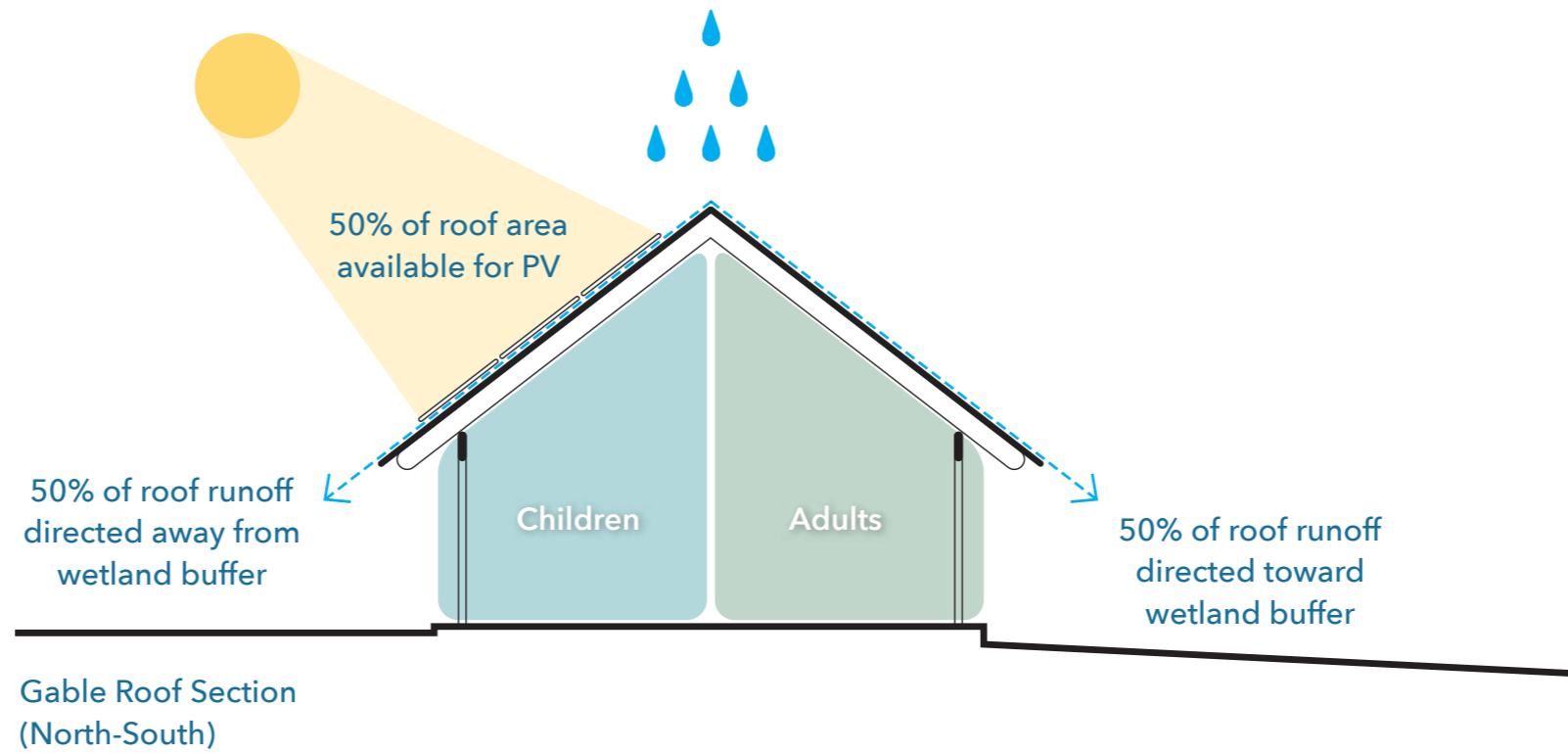


**STIMSON**  
Option 01



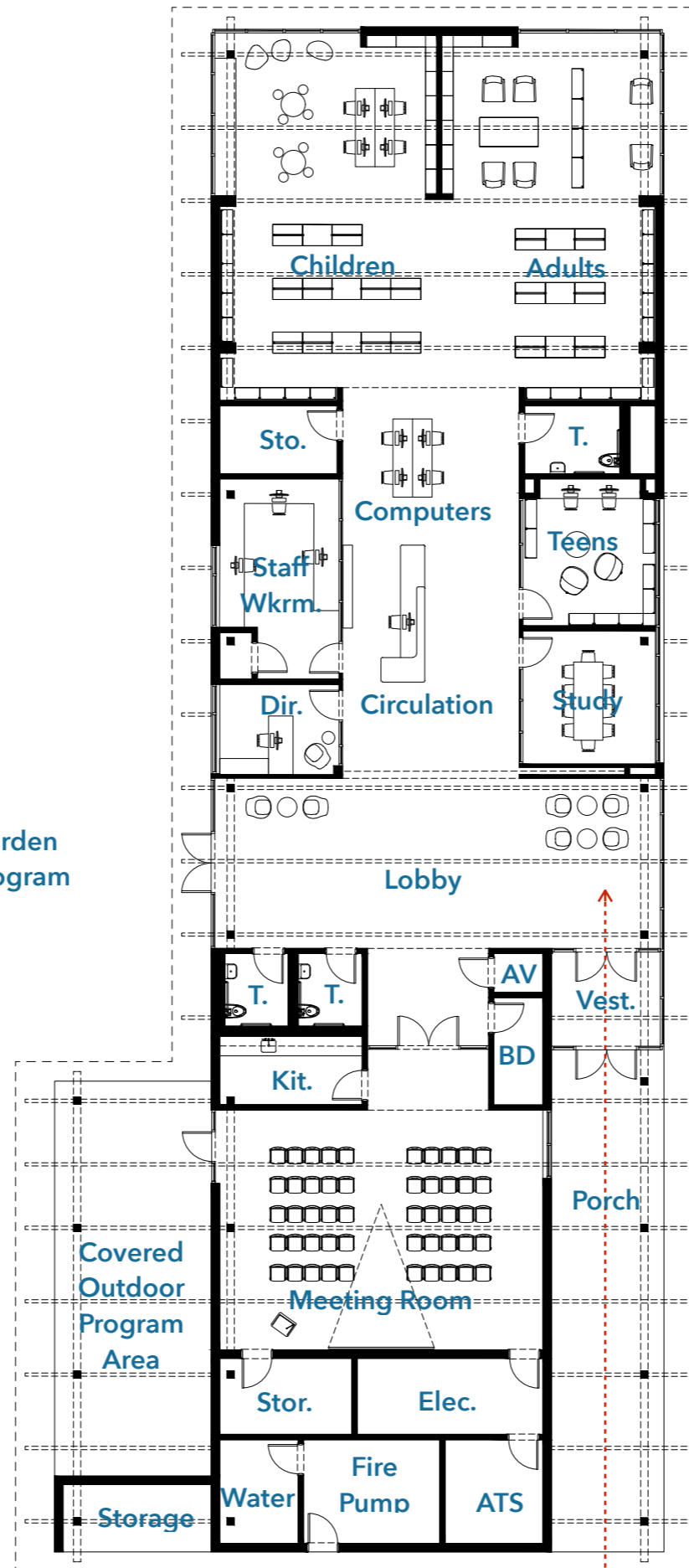
# Preliminary Option 1 Plan





Preliminary Building Planning Option 1 Sections





Reading Garden  
(Outdoor Program Area)

Covered  
Outdoor  
Program  
Area

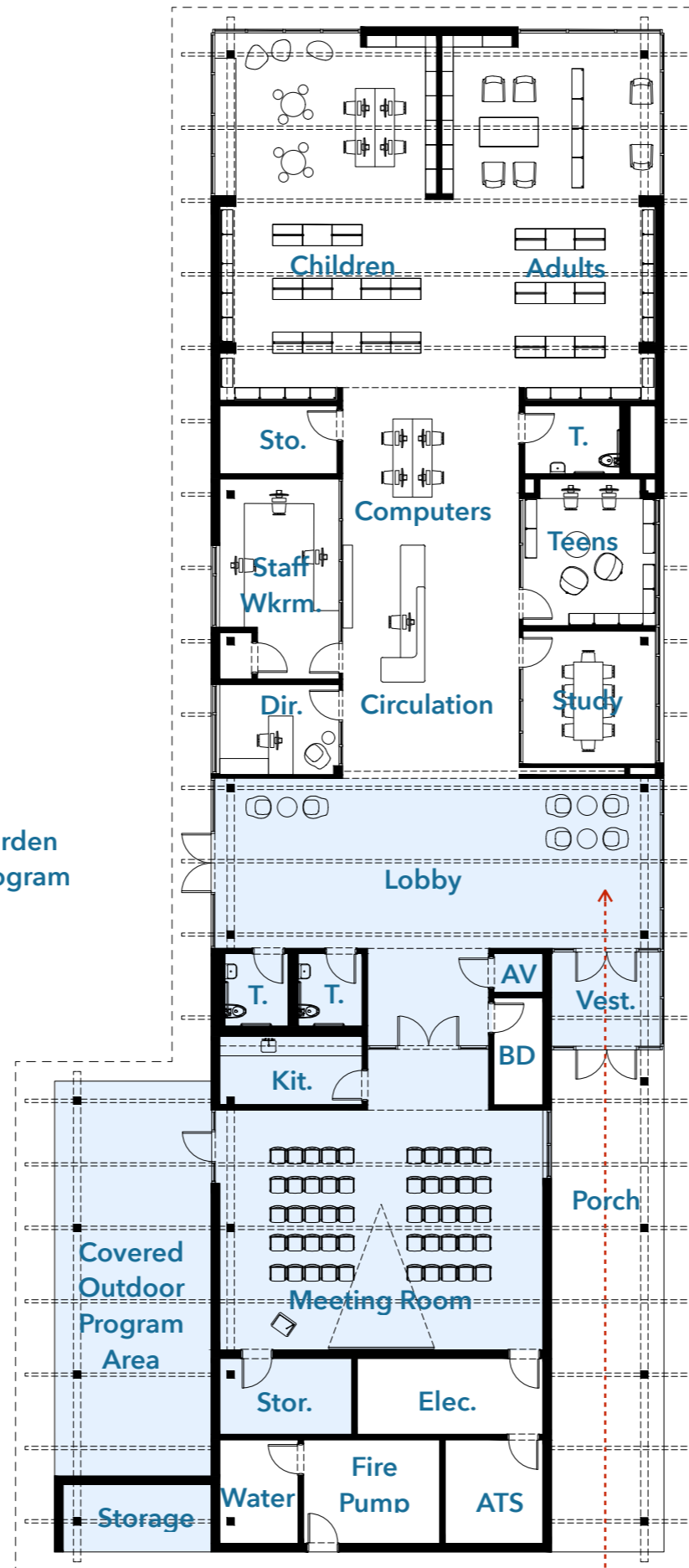
Access from Parking

# Preliminary Option 1 Plan



# Preliminary Option 1 Plan

Reading Garden  
(Outdoor Program Area)

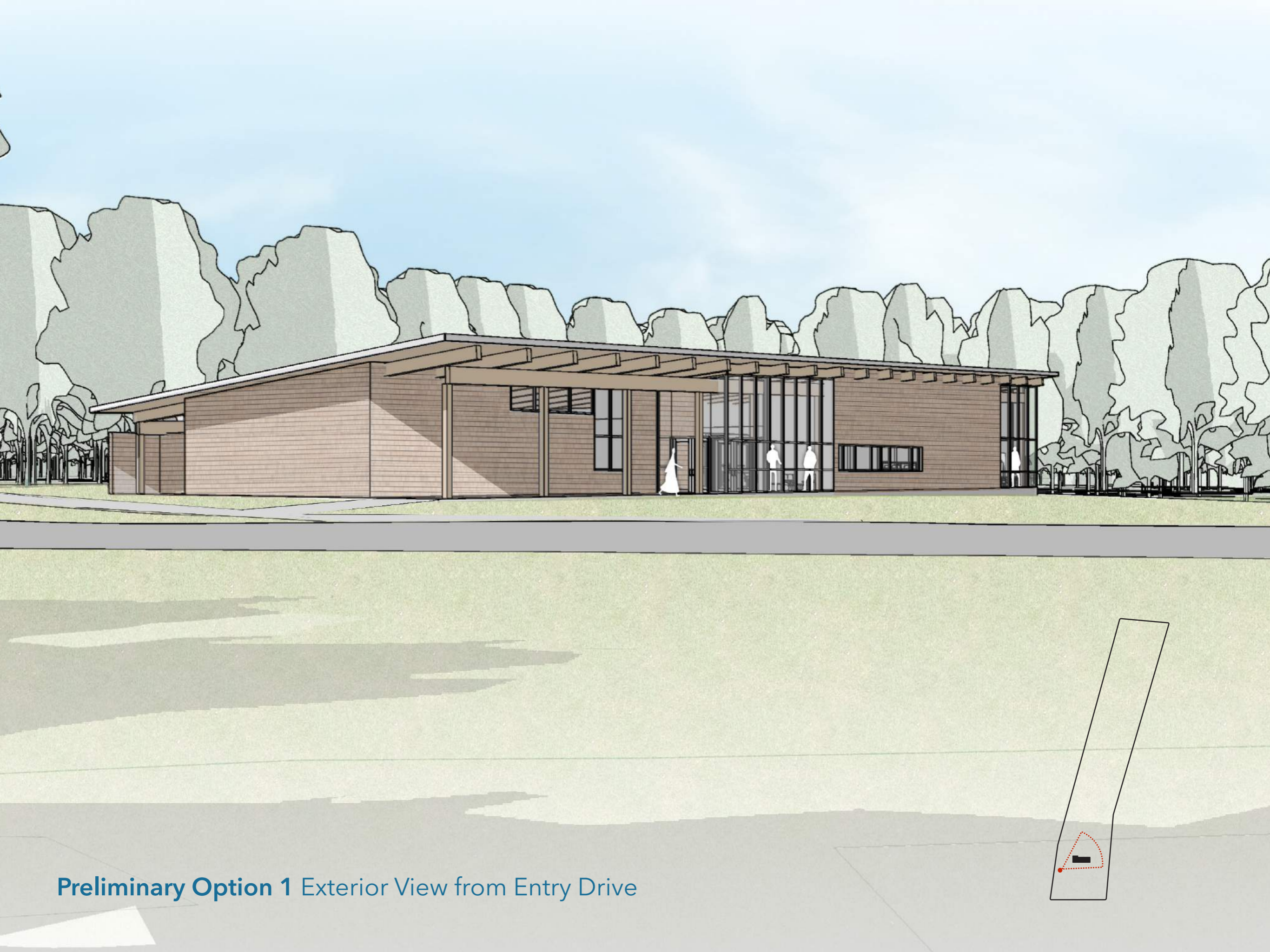


Area Available for Off-hours Use



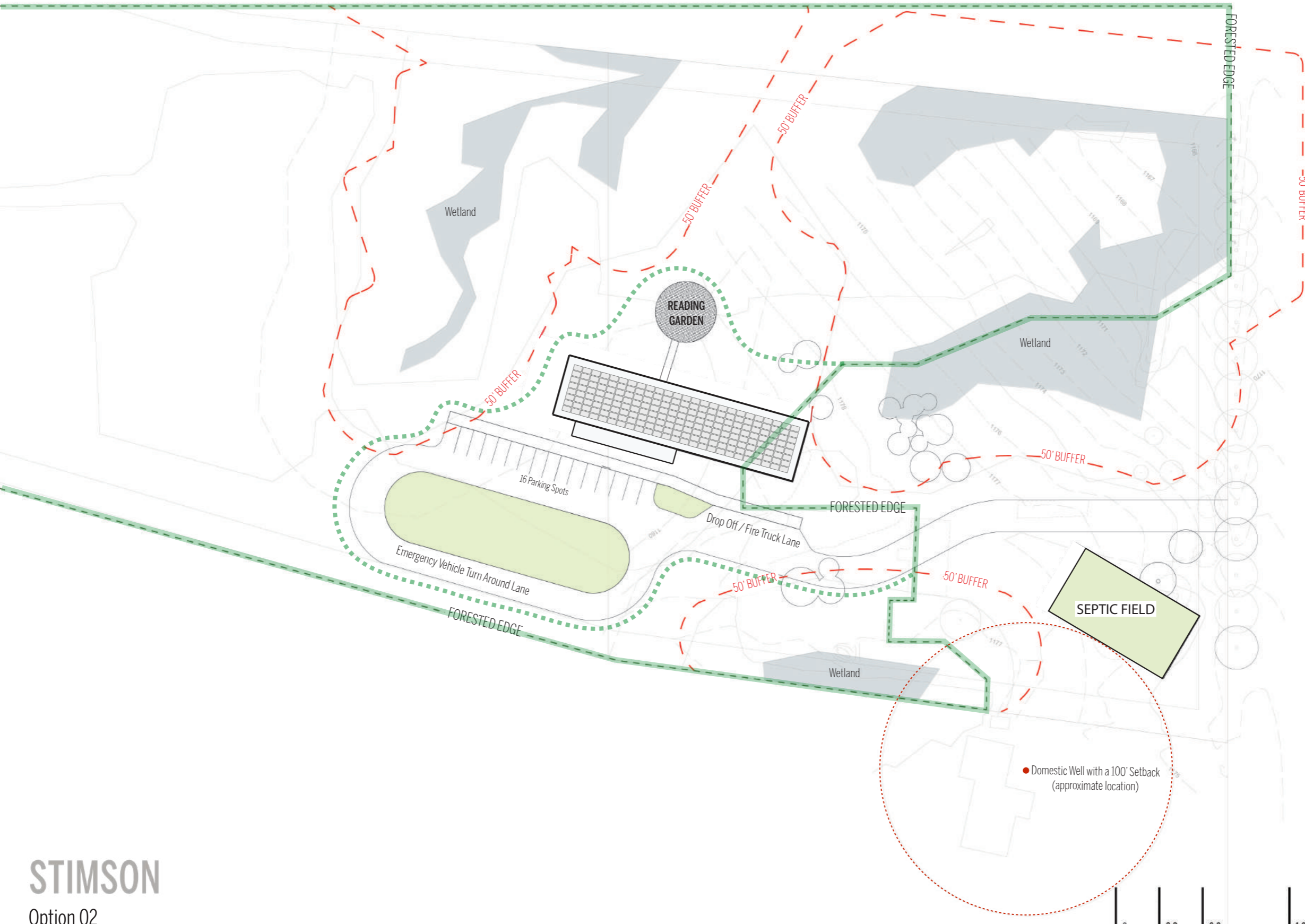


Preliminary Option 1 Exterior View from Leverett Road



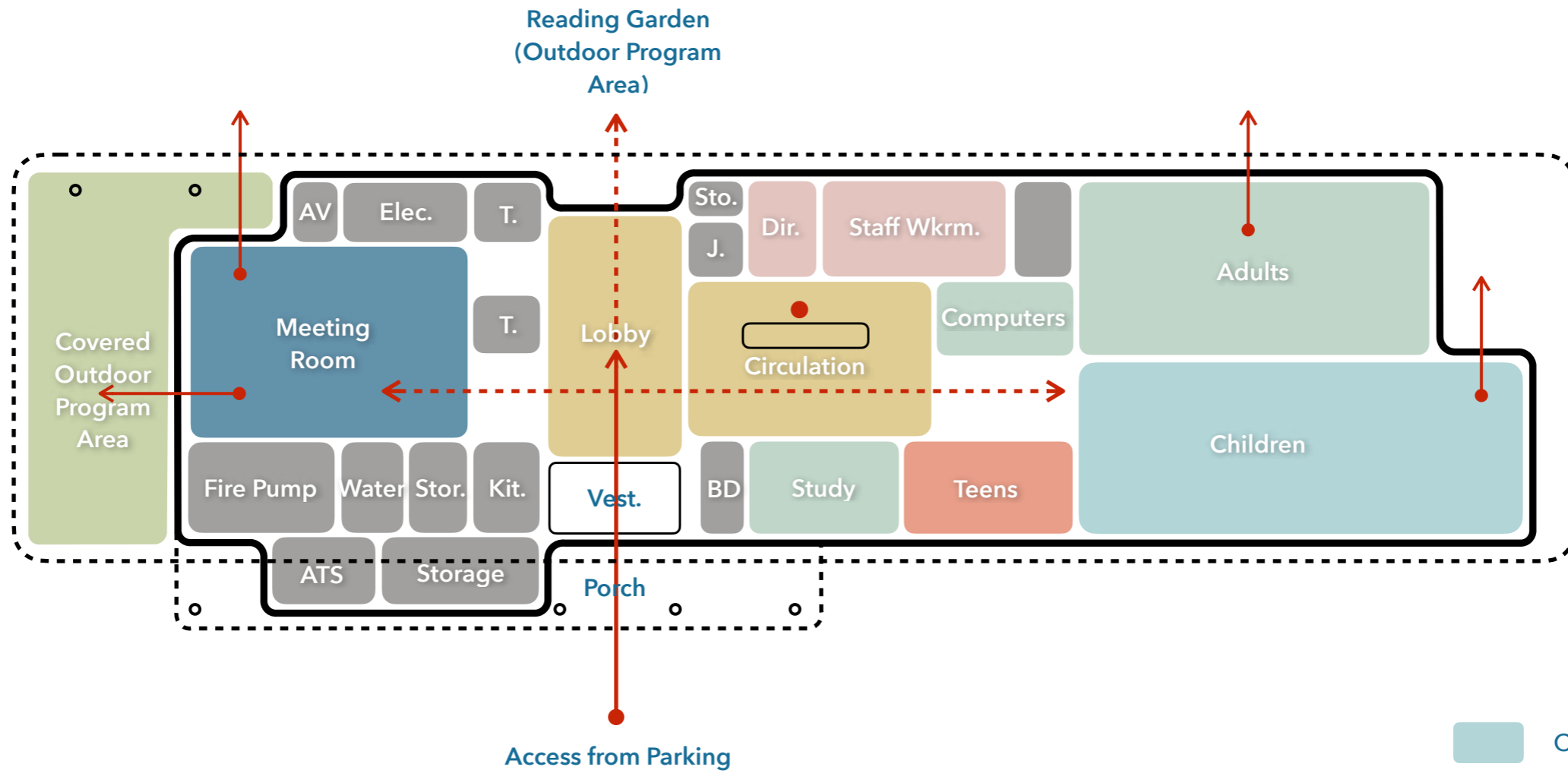
**Preliminary Option 1** Exterior View from Entry Drive





**STIMSON**  
Option 02

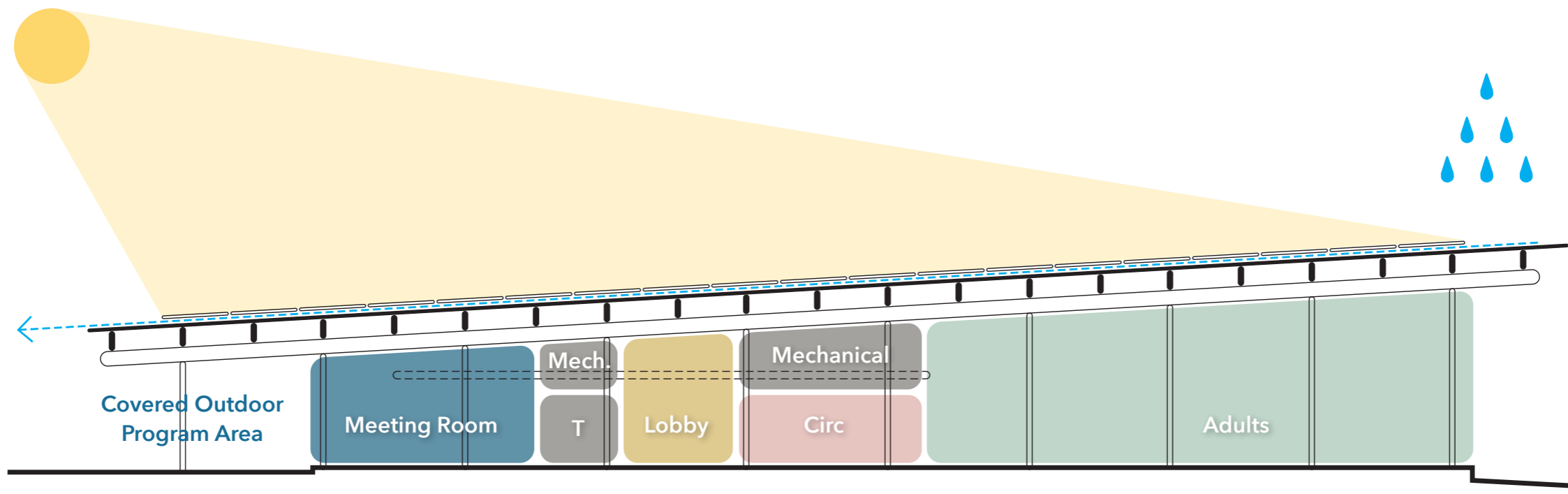




- Children
- Teens
- Adults
- Lobby / Circulation
- Community
- Staff
- Support

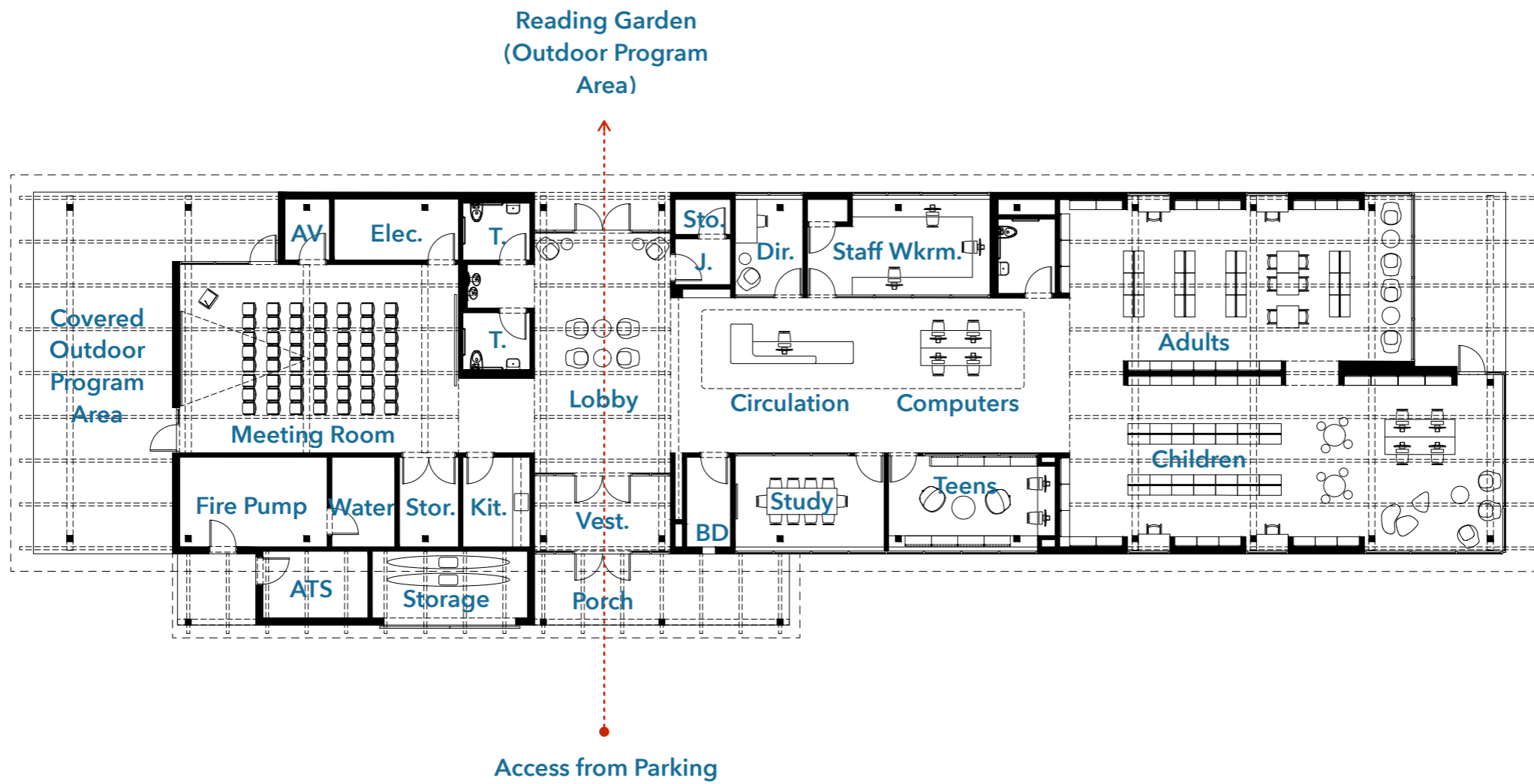


## Preliminary Option 2 Plan



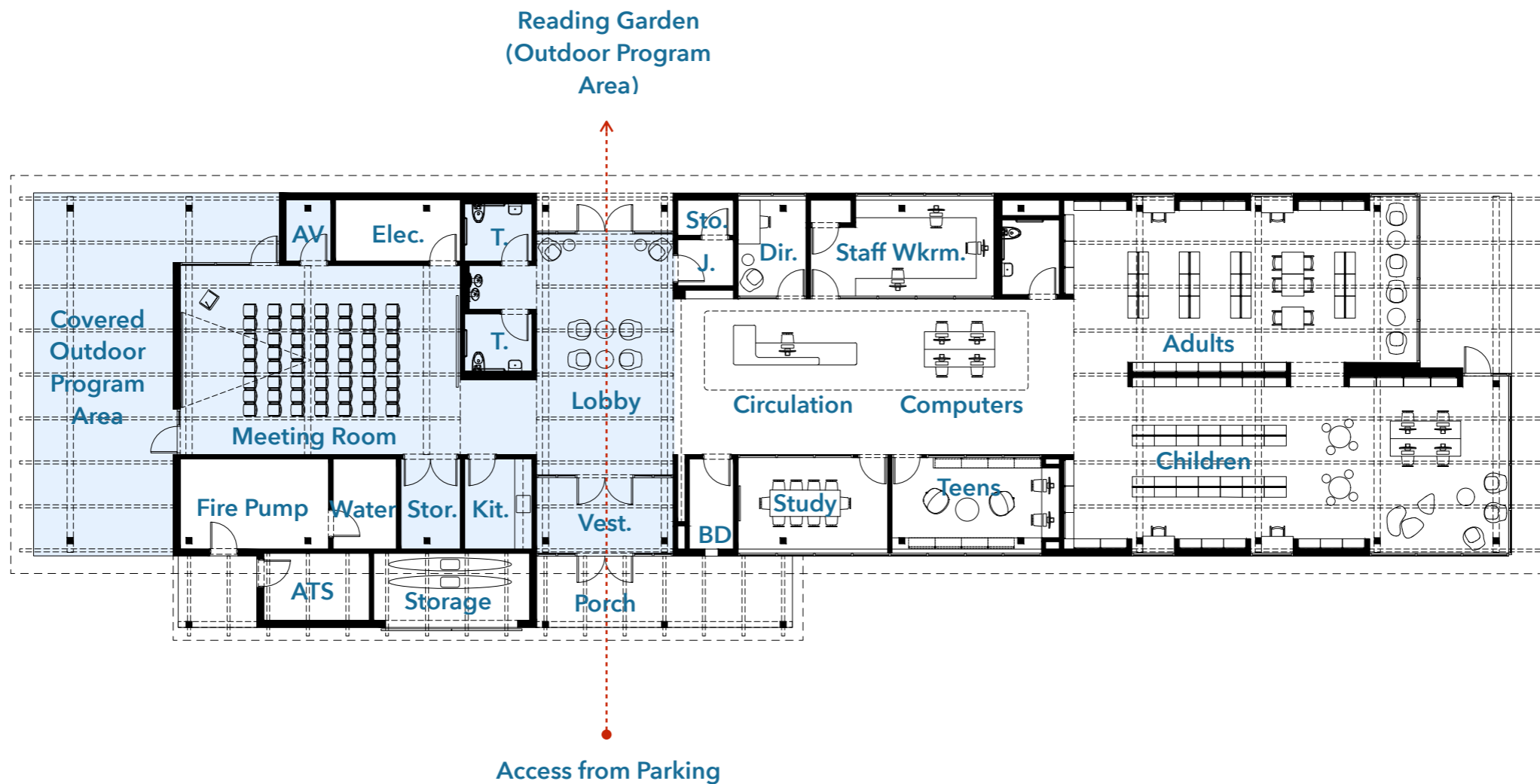
North-South Building Section





Preliminary Option 2 Plan





Area Available for Off-hours Use



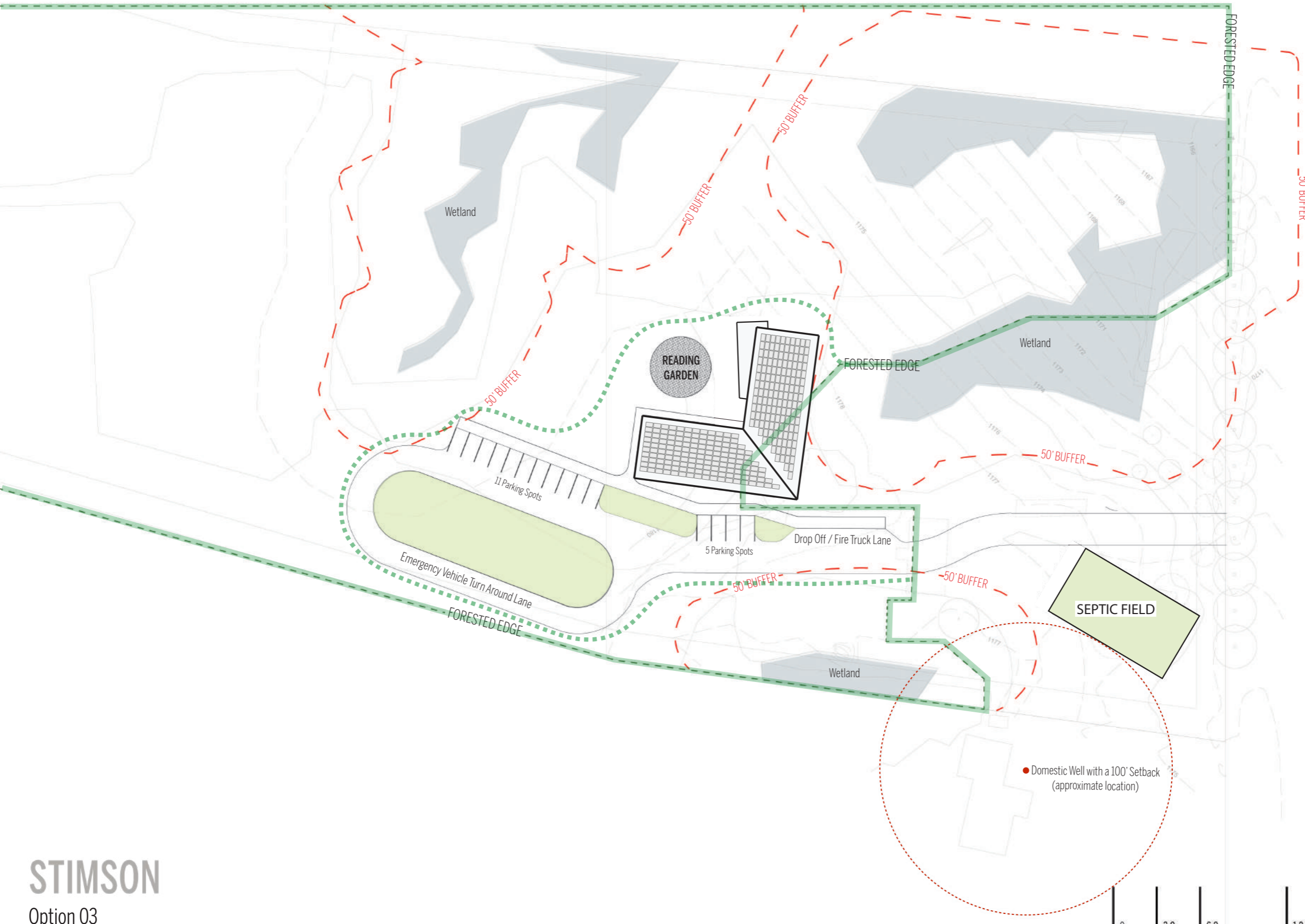
# Preliminary Option 2 Plan



Preliminary Option 2 Exterior View from Leverett Road



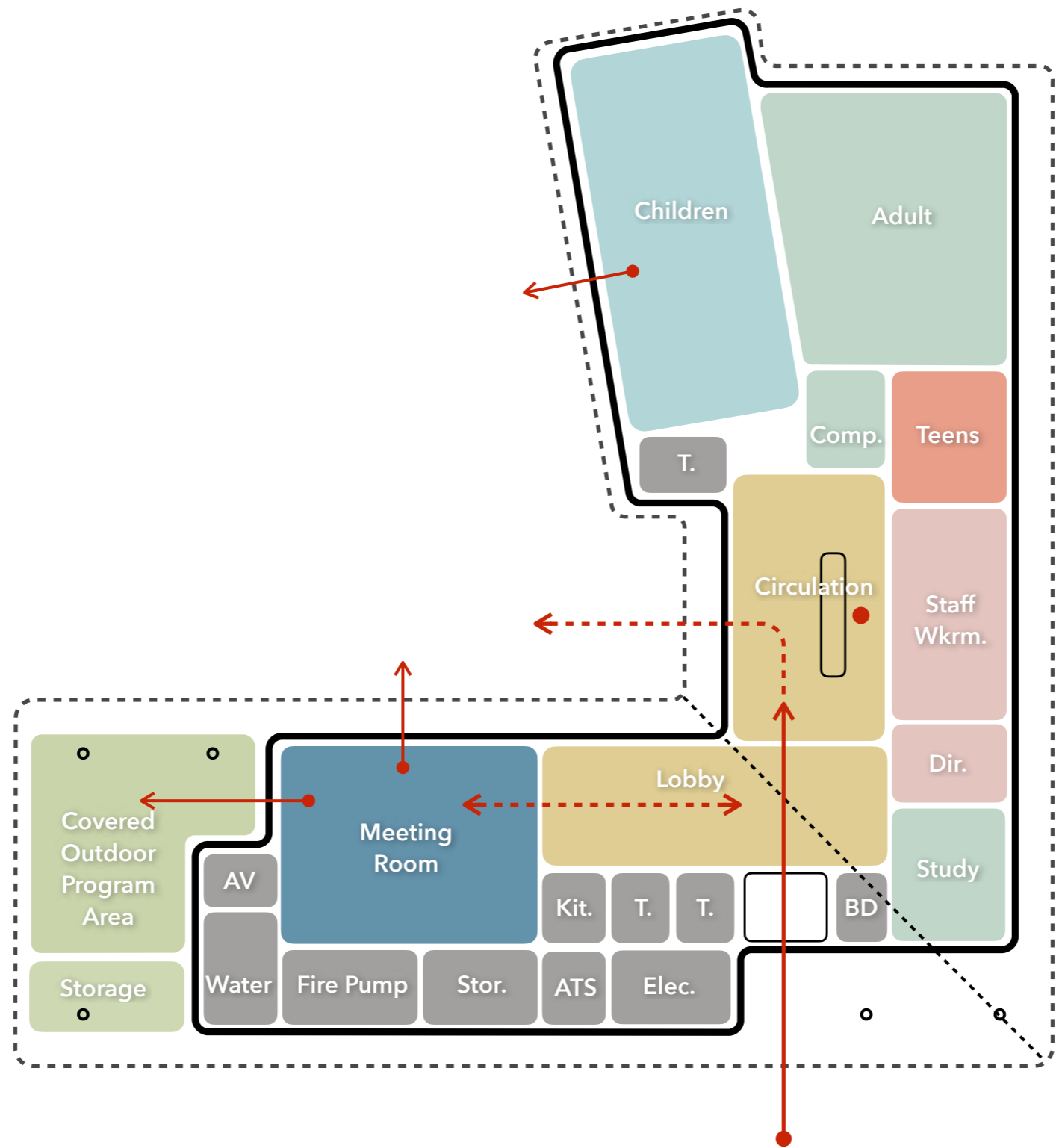
Preliminary Option 2 Exterior View from Entry Drive



**STIMSON**  
Option 03



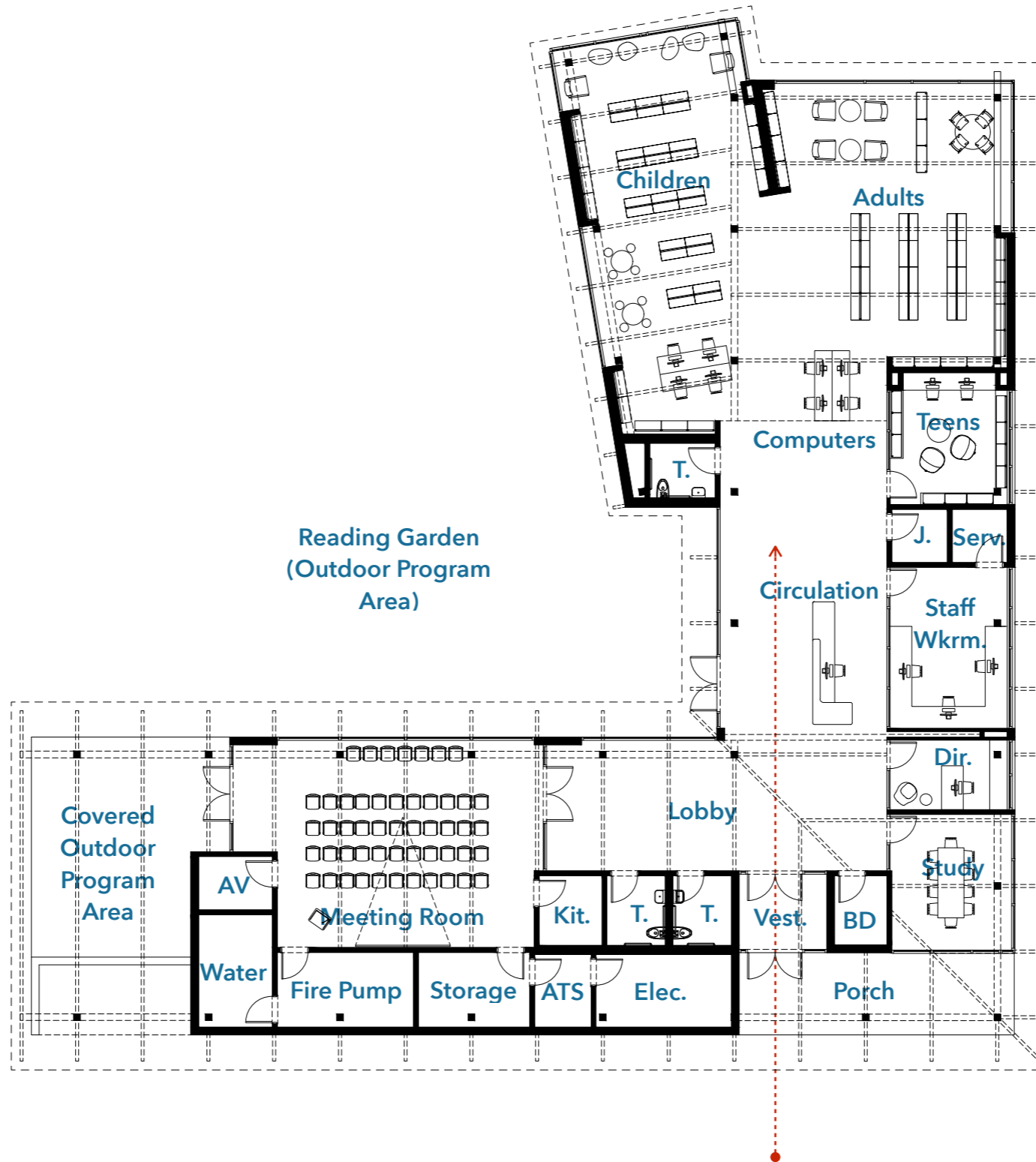




- Children
- Teens
- Adults
- Lobby / Circulation
- Community
- Staff
- Support

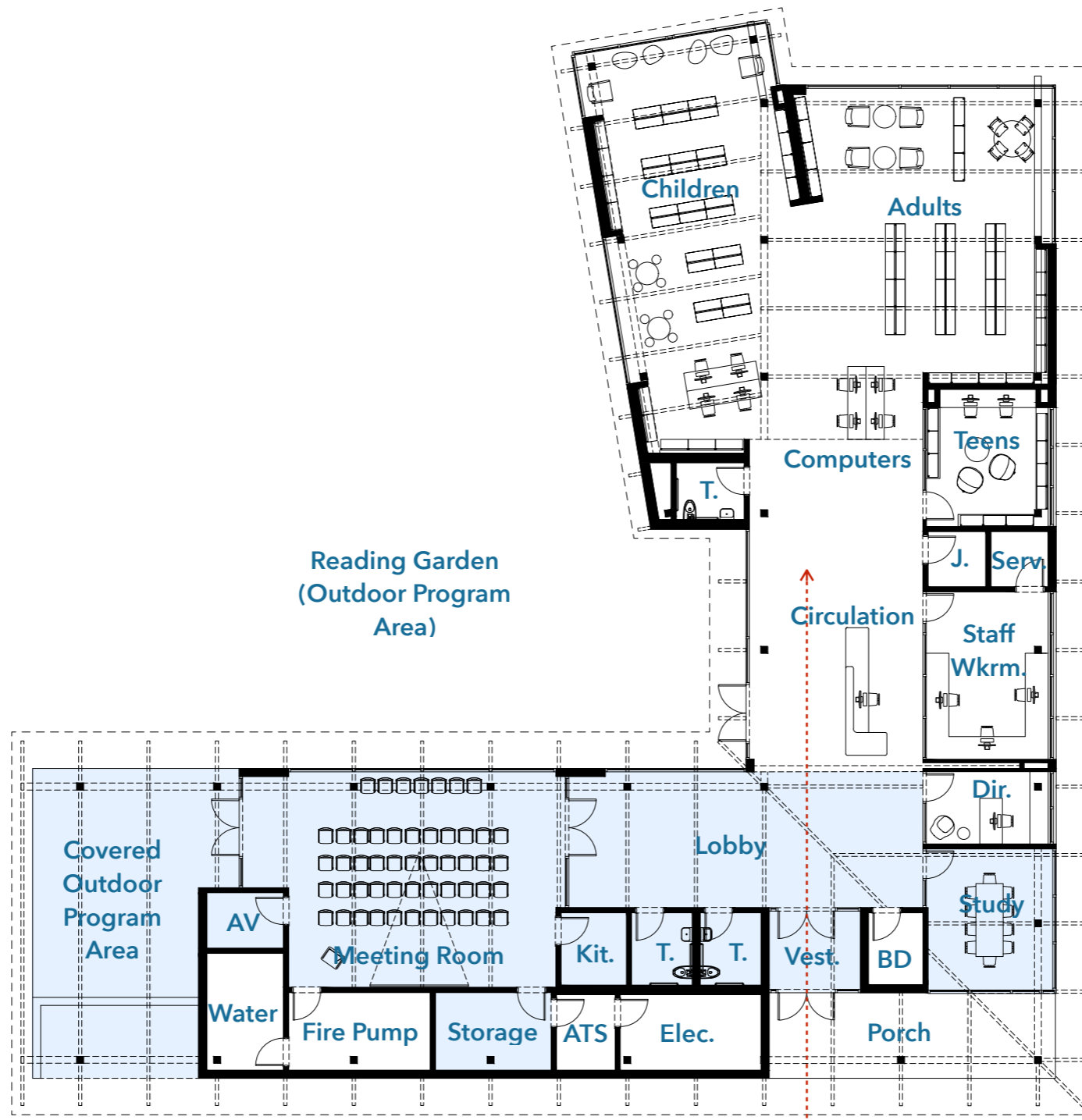


**Preliminary Option 3 Plan**



Preliminary Option 3 Plan





Reading Garden  
(Outdoor Program Area)

Covered  
Outdoor  
Program  
Area

AV

Meeting Room

Water

Fire Pump

Storage

Kit.

T.

T.

Vest.

BD

Lobby

Elec.

Porch

Children

Adults

Computers

Teens

J. Serv.

Staff  
Wkrm.

Dir.

Study

Circulation

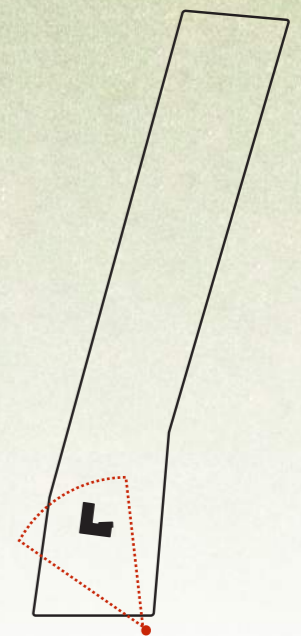
Area Available for  
Off-hours Use



Preliminary Option 3 Plan



Preliminary Option 3 Exterior View from Leverett Road

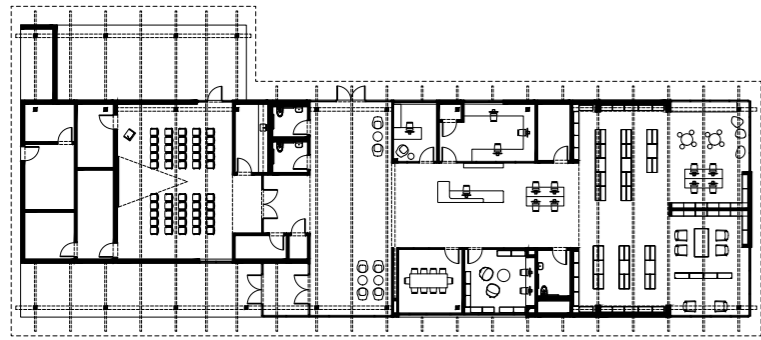




**Preliminary Option 3** Exterior View from Entry Drive

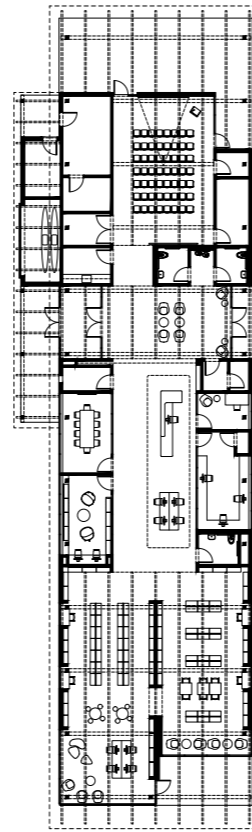
### Option 1

4,727 NSF  
6,624 GSF



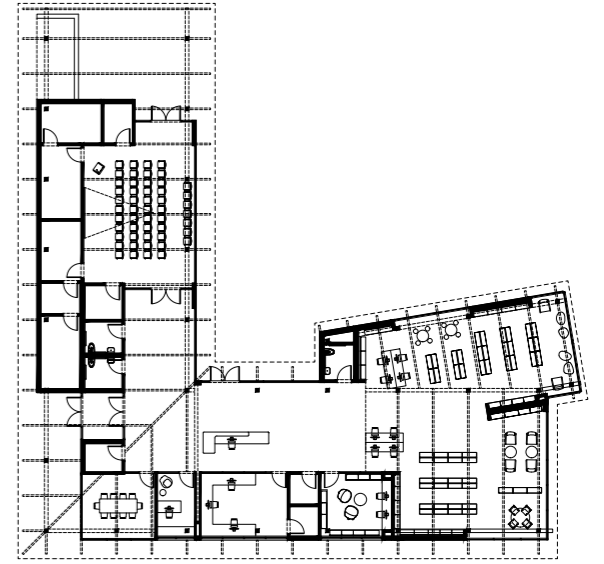
### Option 2

4,395 NSF  
6,146 GSF



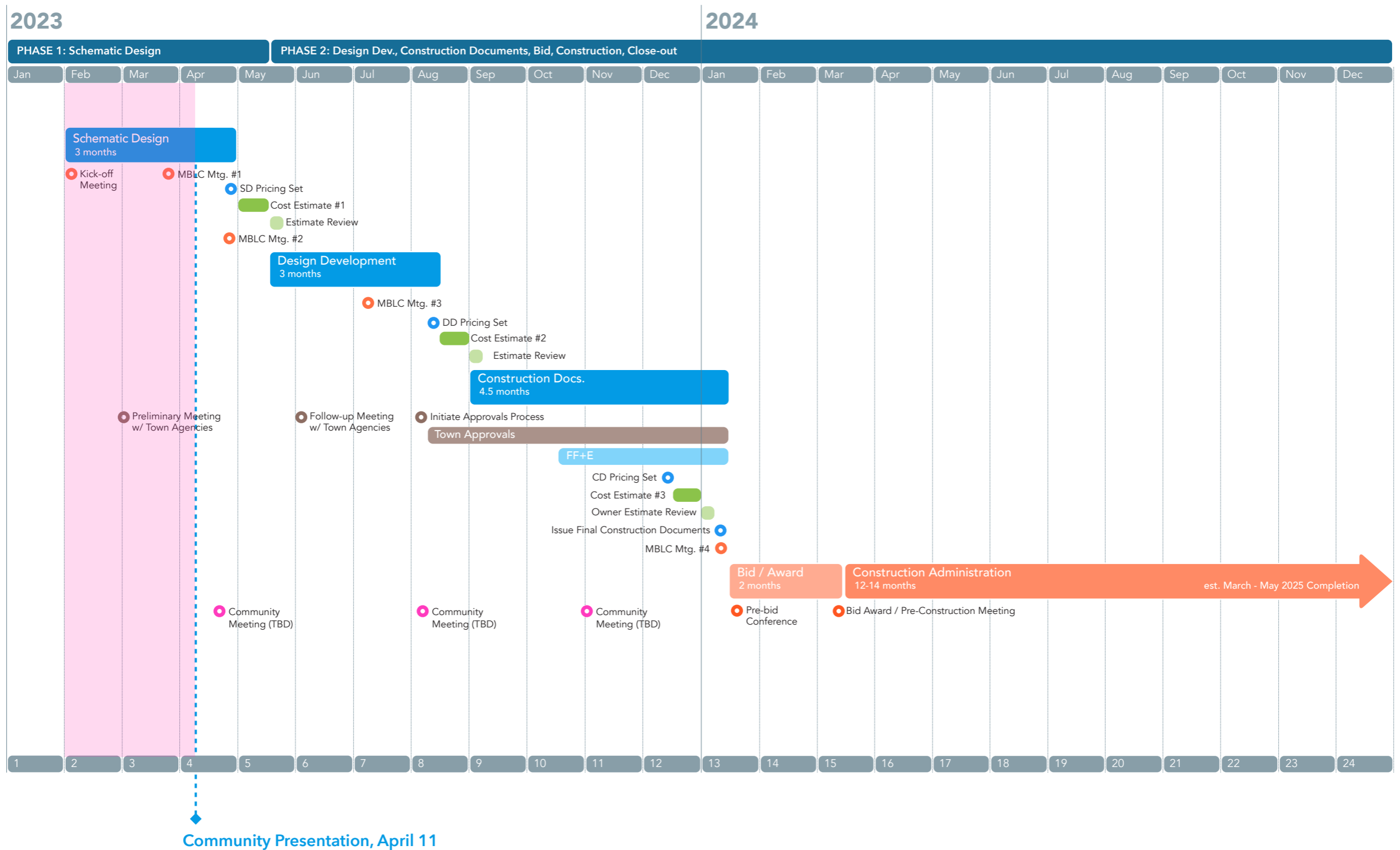
### Option 3

4,705 NSF  
6,219 GSF



Schedule

# Project Schedule



# Project Schedule





Oudens Ello Architecture